

Washington State Ferries 2040 Long Range Plan

Policy Advisory Group

Stephanie Cirkovich, WSF Community Services and Planning Director
Ray Deardorf, WSF Senior Planning Manager
Hadley Rodero, Strategic Communications Manager

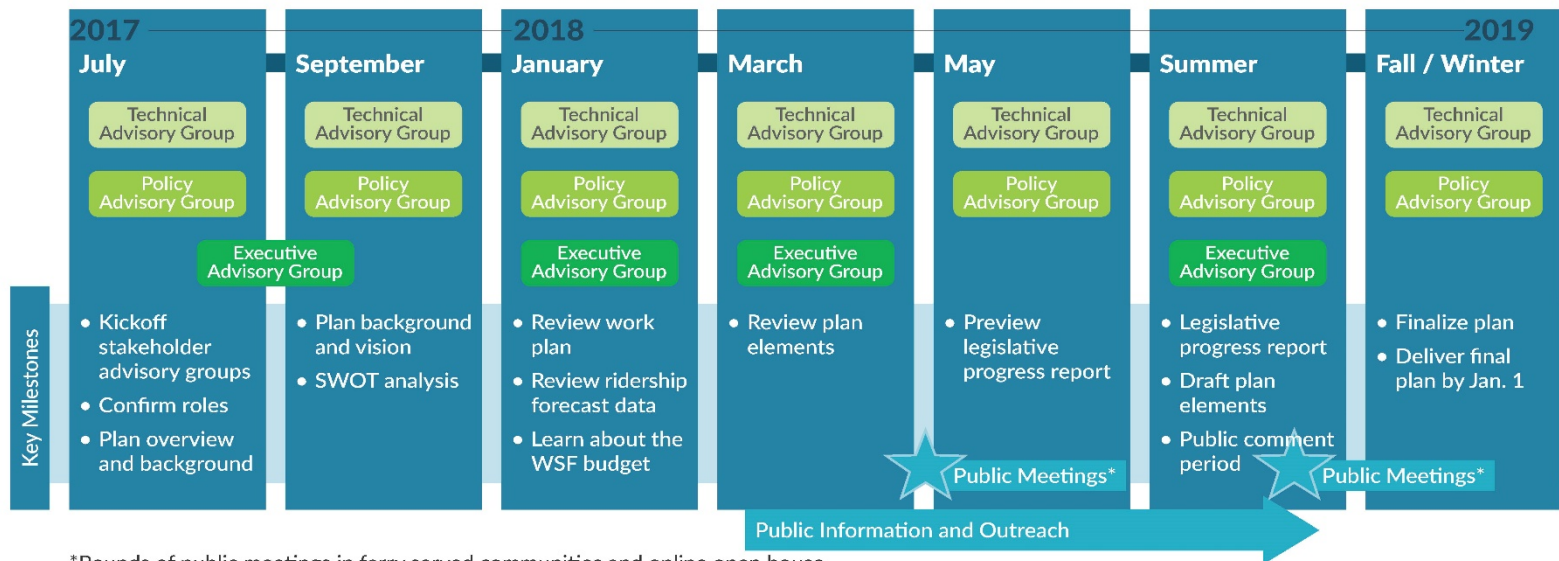
March 15, 2018

Agenda

- Welcome and introductions
- Open house preview
 - Public meeting goals and schedule
 - Notification plan / poster
 - Meeting plan / materials
- Breakout discussion groups
 - Overview of key plan elements and facilitated small group discussions
- Next steps

Open house goals

- The purpose of the open houses is to:
 - Learn about Washington State Ferries' Long Range Plan
 - Share your ideas and help WSF identify priorities and considerations that should be included in the Long Range Plan
 - Meet the project team and ask questions



*Rounds of public meetings in ferry served communities and online open house.

Open house schedule

Date	Community	Time	Location
April 17	Bainbridge Island	5:30-7:30 pm	Bainbridge Island Senior Center
April 19	Port Townsend	5-7 pm	Cotton Building
April 24	Vashon Island	6-8 pm	Vashon Island High School
April 25	Bremerton	5:30-7:30pm	Kitsap Conference Center
April 26	Southworth	6 -8 pm	John Sedgwick Jr. High School
May 1	Clinton	5:30-7:30 pm	Clinton Community Hall
May 2	San Juan Islands	3:30-6:00 pm	Brickworks
May 8	Kingston	6-8 pm	Kingston Village Green Community Center
May 17	Fauntleroy	6-8 pm	Fauntleroy Church

Online open house: April 10 – May 11 at WSFlongrangeplan.com

Help us get the word out!

Open houses will be advertised through the following channels:

- Posters on vessels, in terminals, and distributed to community partners
- Press release
- Email alerts
- WSF Website
- Social media
- Assist. Secretary Amy Scarton's Weekly Update

Help shape the future of Washington State Ferries

Ferry ridership is expected to grow 30 percent by 2040. Washington State Ferries (WSF) is developing a Long Range Plan to better understand and plan for the changing needs of the system through 2040.

Photo by ferry rider ©Garth Henson, used with permission.

Attend an open house

Bainbridge Island Tuesday, April 17 5:30 - 7:30 p.m. Bainbridge Island Senior Center, 370 Brien Drive SE, Bainbridge Island	Clinton Tuesday, May 1 5:30 - 7:30 a.m. Clinton Community Hall, 2411 South Central Avenue, Clinton
Port Townsend Thursday, April 19 3 - 7 p.m. Cotton Building, 607 Water Street, Port Townsend	San Juan Islands Wednesday, May 2 8:30 - 6 p.m. Bridleways, 120 Nichols Street, Friday Harbor
Washou Island Tuesday, April 24 6 - 8 p.m. Washou Island High School, 9000 SW 204th Street, Washou	Kingston Wednesday, May 9 6 - 8 p.m. Kingston Village Green Community Center, 26159 Duley Road NE, Kingston
Bremerton Wednesday, April 25 5:30 - 7:30 p.m. Klappa Conference Center, 200 Washington Avenue, Bremerton	Fairbury Thursday, May 17 8 - 8 p.m. Fairbury Church, 3140 California Avenue SW, Seattle
Southworth Thursday, April 26 6 - 8 p.m. John Sedgwick Jr. High, 8995 SE Sedgwick Road, Port Orchard	

Stop by anytime to learn about the plan and share your ideas. There will not be a formal presentation.

Join us at an open house to:

- Learn more about the WSF 2040 Long Range Plan
- Share your ideas and help WSF identify priorities and considerations that should be included in the Long Range Plan
- Meet the project team to ask questions

Participate online:

View open house materials and provide comments at our online open house from April 10 - May 11 at: WSFLongRangePlan.com

Questions?

Contact us: WSFLongRangePlan@WSDOT.wa.gov

Washington State Ferries 2040 Long Range Plan

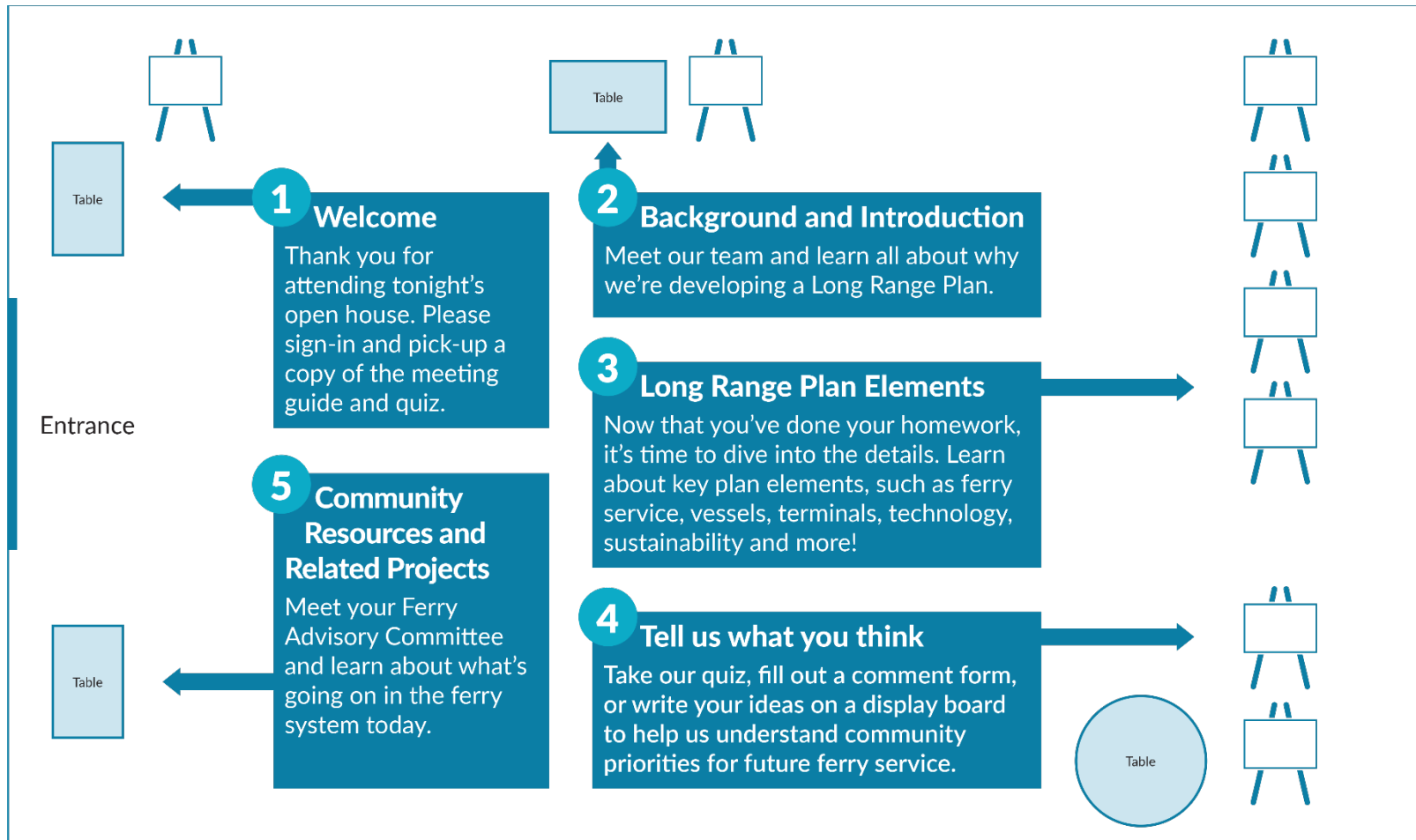
Washington State Ferries WSDOT

WSDOT keeps people, businesses and the economy moving by operating and improving the state's transportation systems. To learn more about what we're doing, go to washington.gov for pictures, videos, news and blogs. Real time traffic information is available at wdot.com/traffic or by dialing 511.

Americans with Disabilities Act (ADA) Information: Accommodation requests for people with disabilities can be made by contacting the WSDOT Office of ADA Affairs team at wsoada@wdot.wa.gov or by calling toll-free, 828-848-4424. Persons who are deaf or hard of hearing may make a request by calling the Washington State Relay at 711.

Title VI Statement of Public: It is WSDOT's policy to assure that no person shall, on the grounds of race, color, national origin or sex, as provided by Title VI of the Civil Rights Act of 1964, be excluded from participation in, be denied the benefits of, or be otherwise discriminated against under any of its federally funded programs and activities. Any person who believes his or her Title VI protection has been violated may file a complaint with WSDOT's Office of Equal Opportunity. For additional information regarding Title VI complaint procedures and/or information regarding our non-discrimination obligations, please contact OEO's Title VI Coordinator at 509-705-7050.

Open house plan



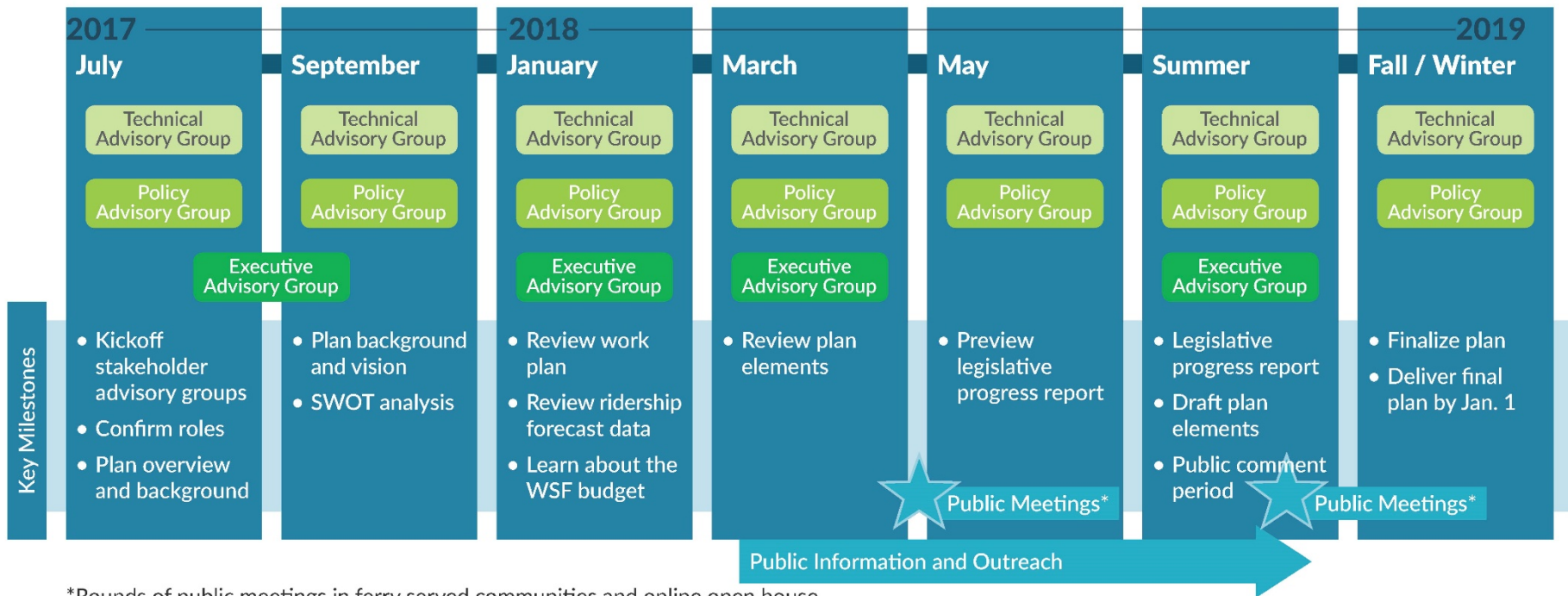
Small group discussion

Small group discussions about key plan elements:

- Ferry service
- Vessels
- Terminals
- Performance metrics and level of service standards

Look ahead

- Next PAG meeting: May



*Rounds of public meetings in ferry served communities and online open house.