

# WELCOME

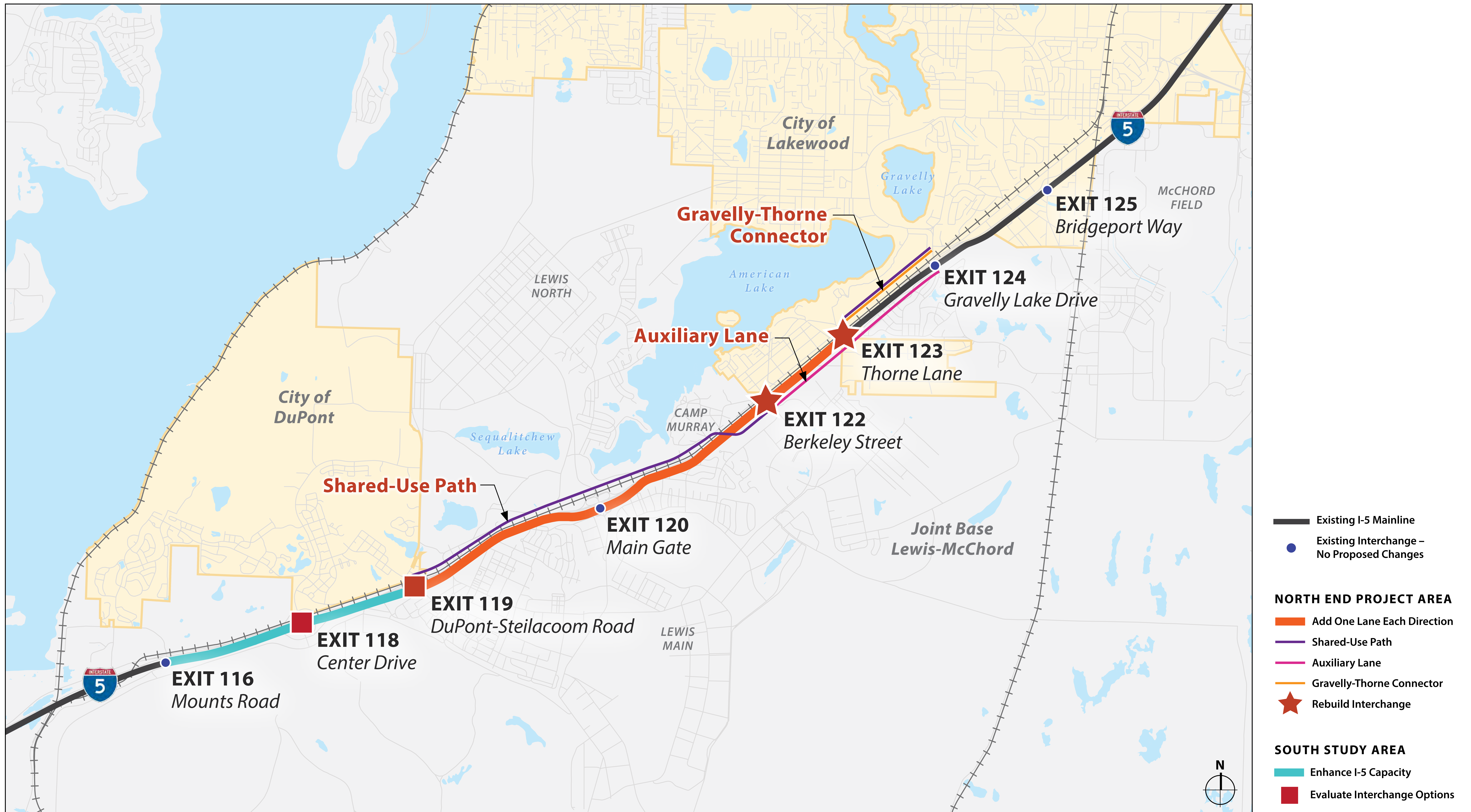
I-5 JBLM VICINITY CONGESTION RELIEF PROJECT

## Community Update For DuPont & Steilacoom On Proposed I-5 Improvements

# Project Overview

# PROPOSED IMPROVEMENTS

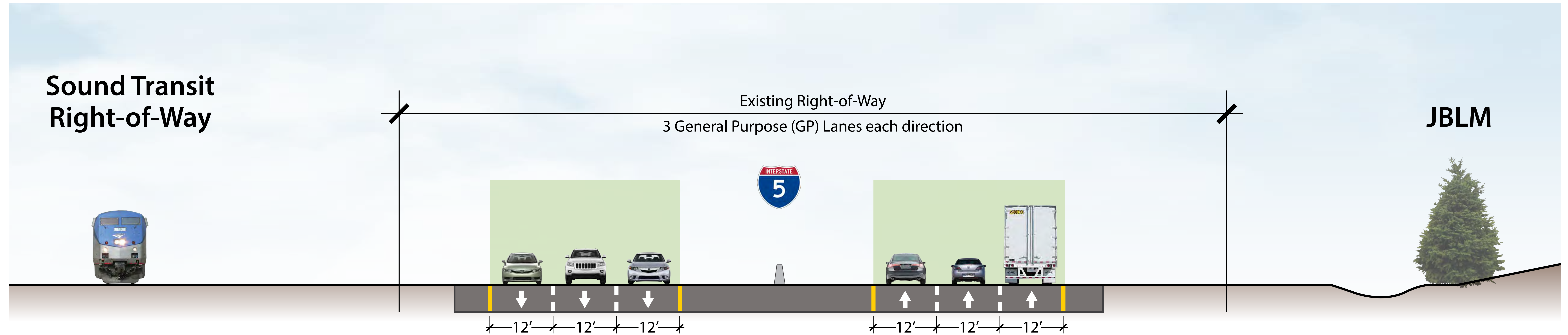
## I-5 JBLM VICINITY CONGESTION RELIEF PROJECT



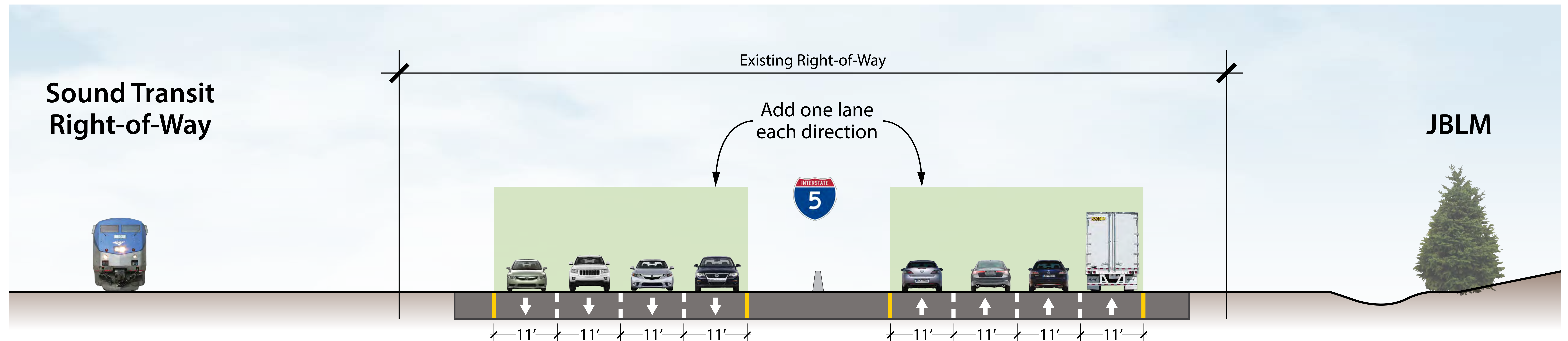
# I-5 CROSS SECTION - EXISTING & PROPOSED

## I-5 JBLM VICINITY CONGESTION RELIEF PROJECT

### Existing Typical Cross-Section



### Proposed Typical Cross-Section



# PROPOSED BIKE & PEDESTRIAN PATH

## I-5 JBLM VICINITY CONGESTION RELIEF PROJECT

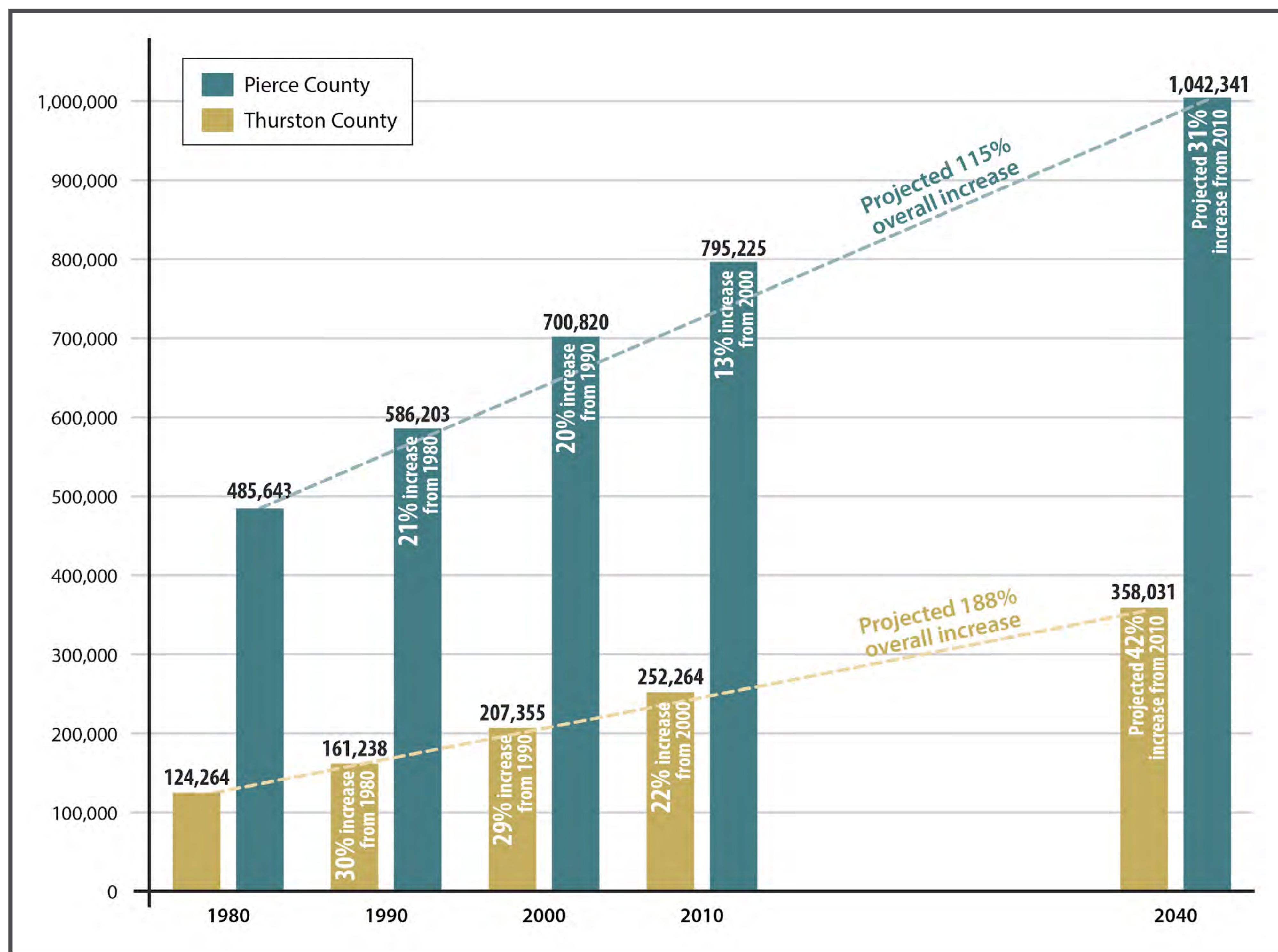


# What Happens if We Don't Do Anything?

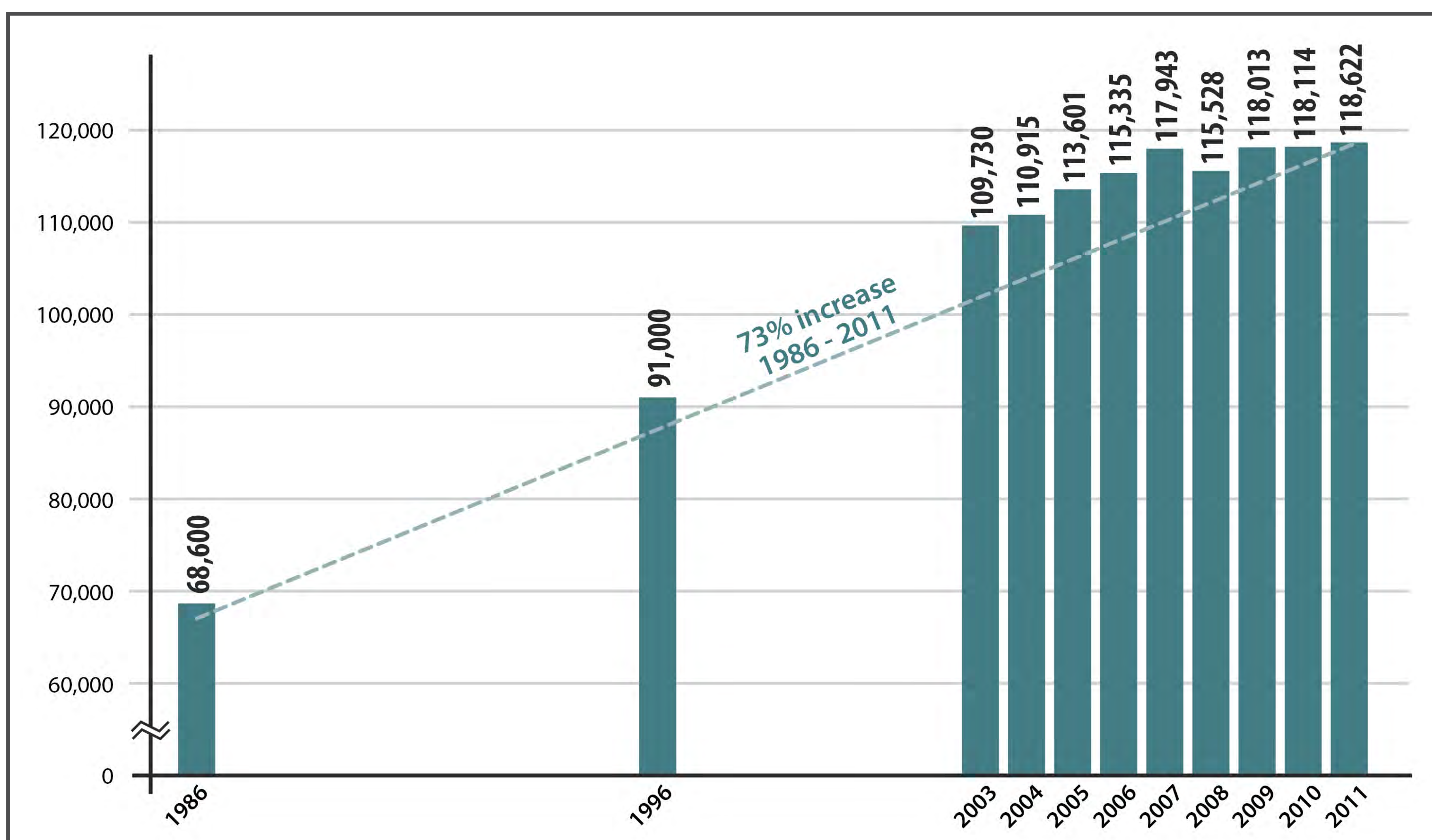
# GROWTH TRENDS IN STUDY AREA

## I-5 JBLM VICINITY CONGESTION RELIEF PROJECT

Population Growth Trends  
Pierce and Thurston Counties, 1980-2040

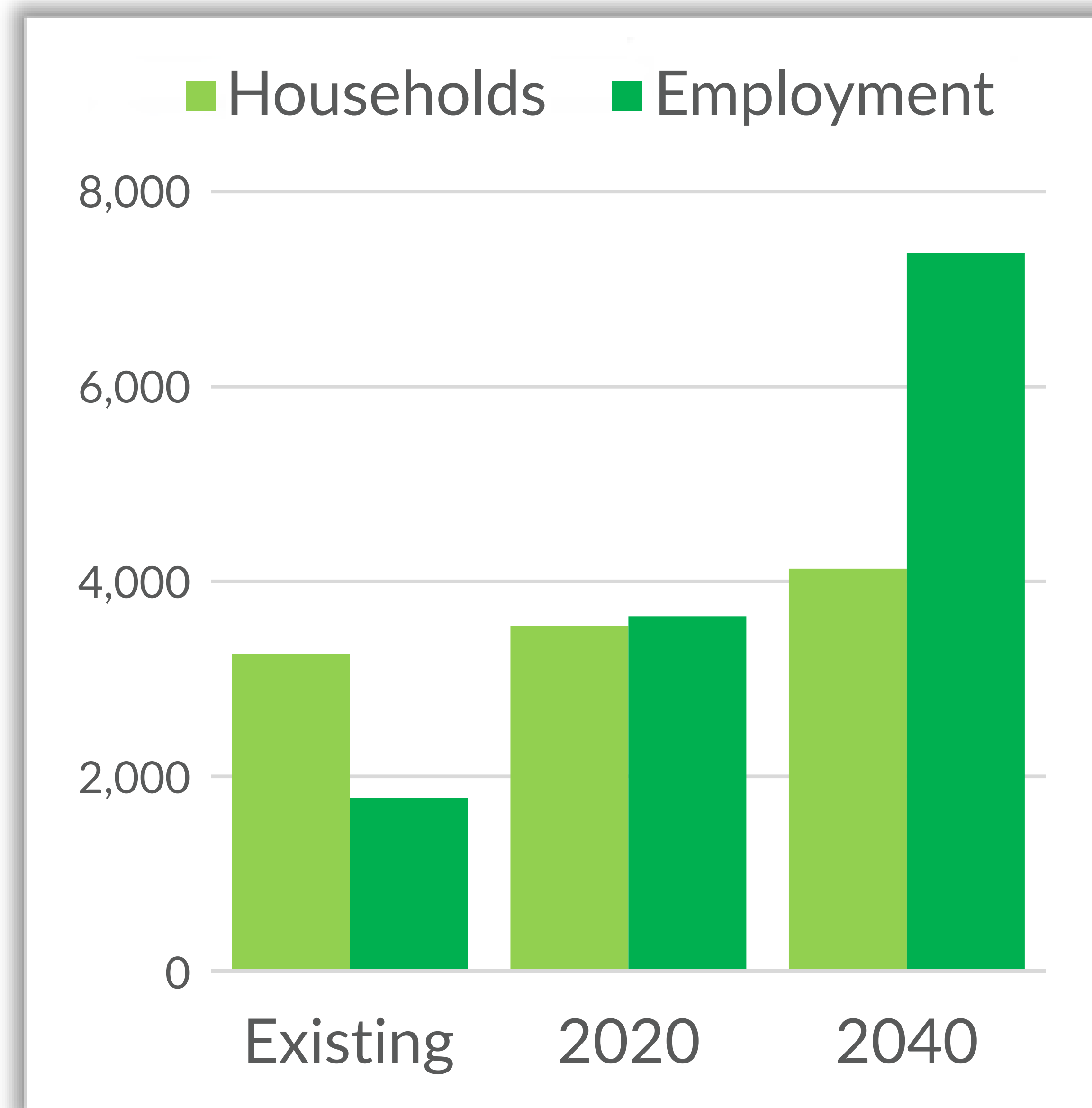


Average Annual Daily Traffic Volume  
1986-2011, I-5 at DuPont

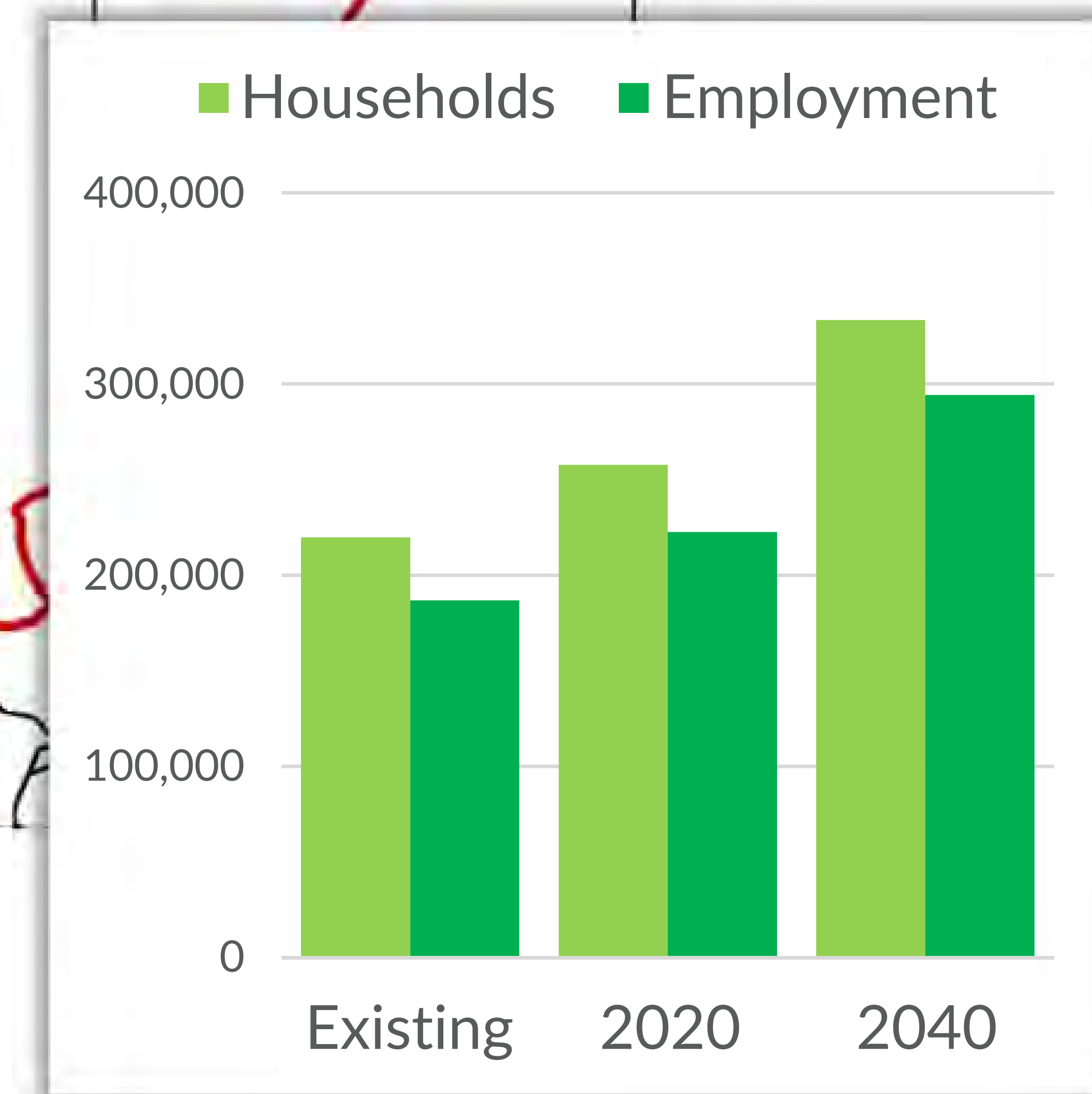
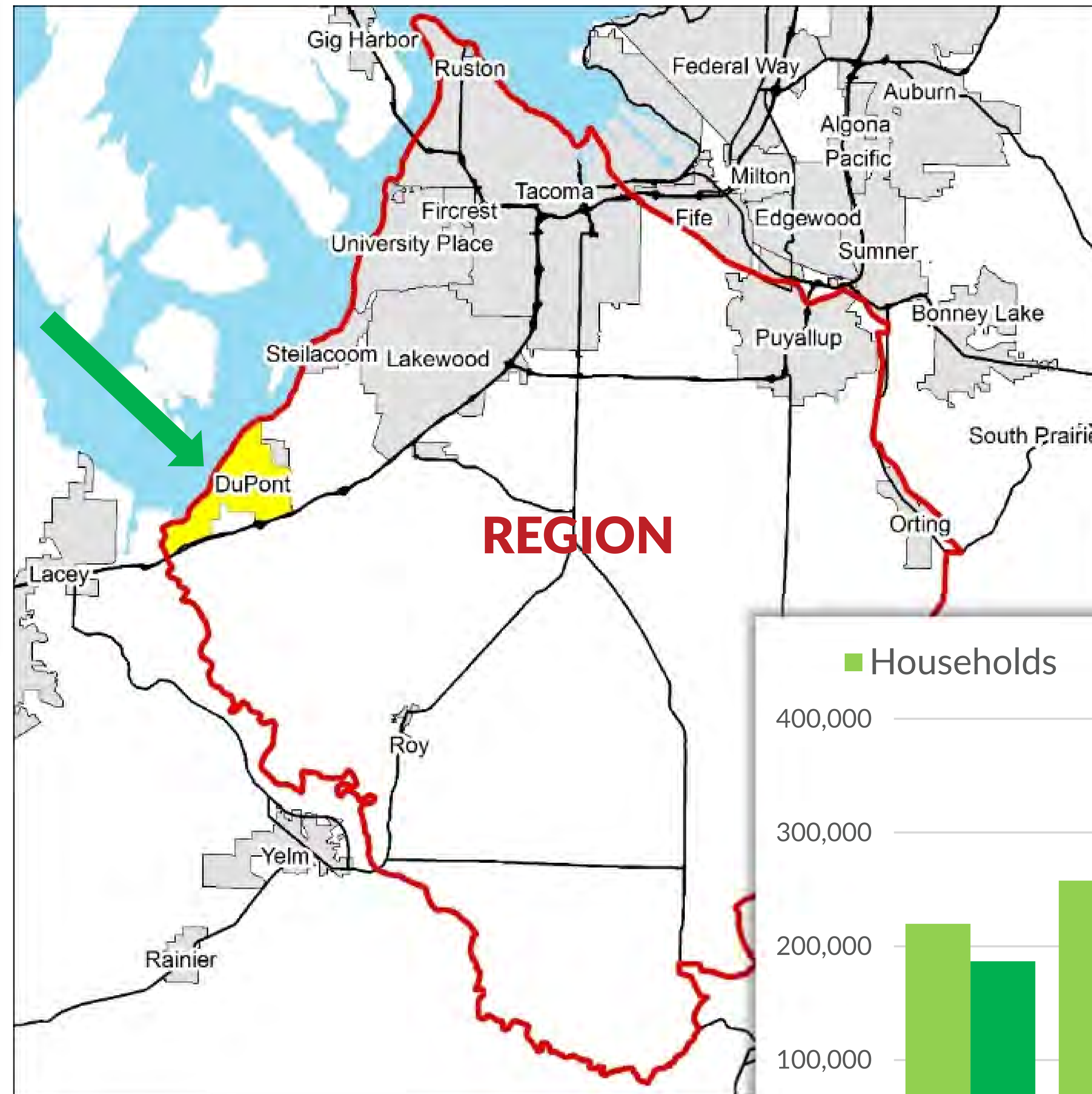


# POPULATION AND EMPLOYMENT GROWTH

## I-5 JBLM VICINITY CONGESTION RELIEF PROJECT



DuPont Area

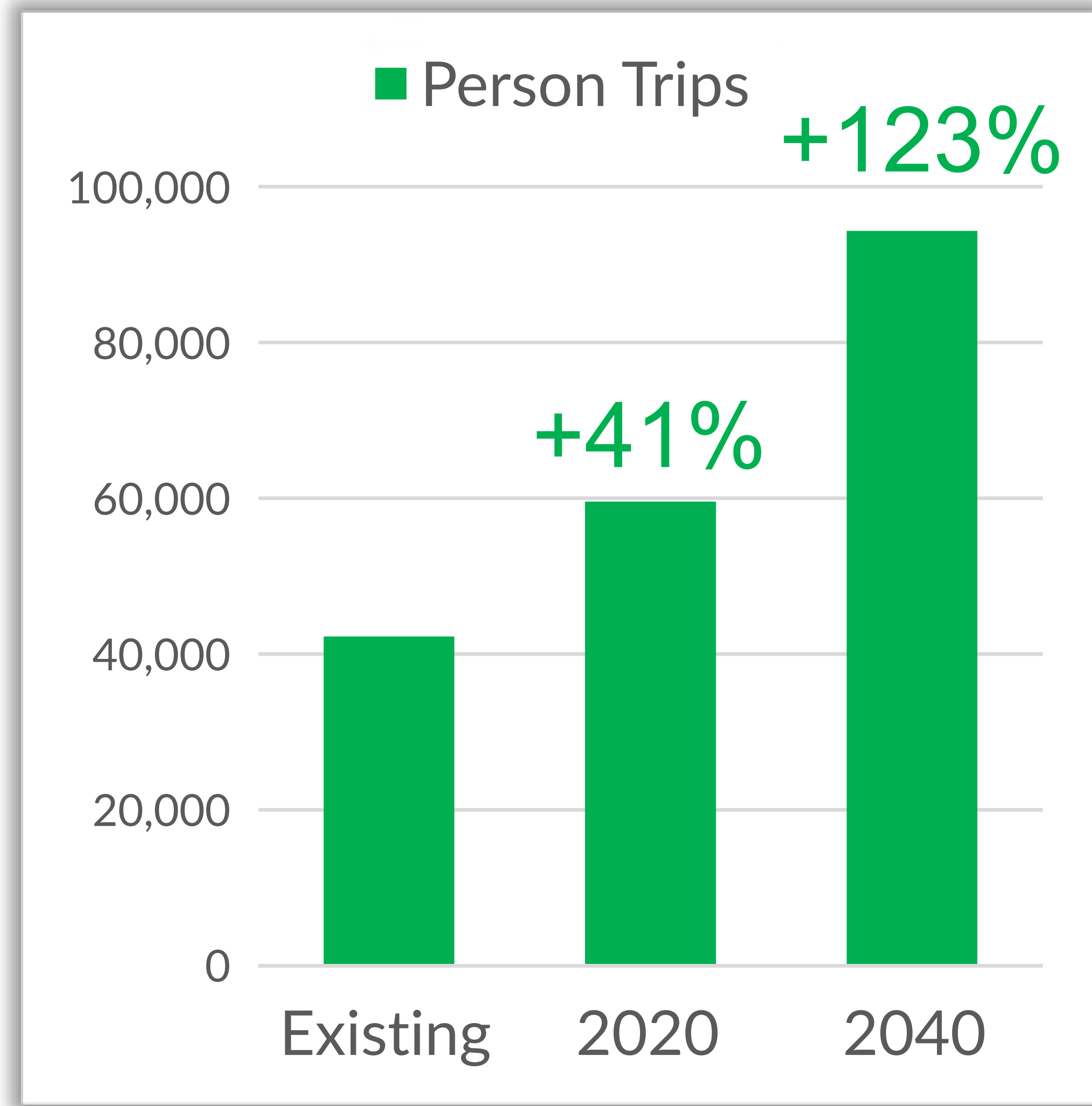


Population and employment growth data is based on City of DuPont Comprehensive Plan and Puget Sound Regional Council regional growth plans.

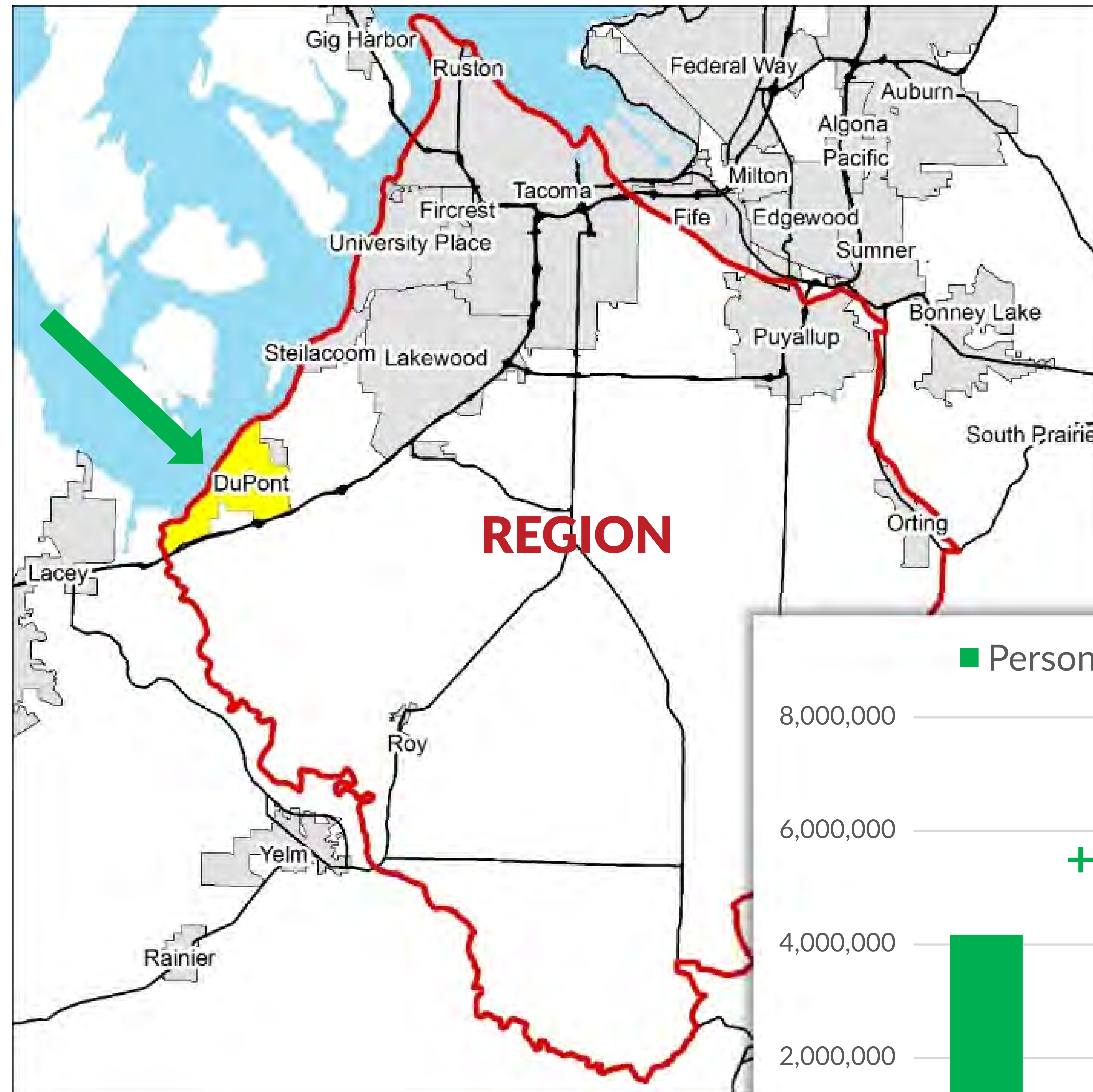


# TRAVEL GROWTH

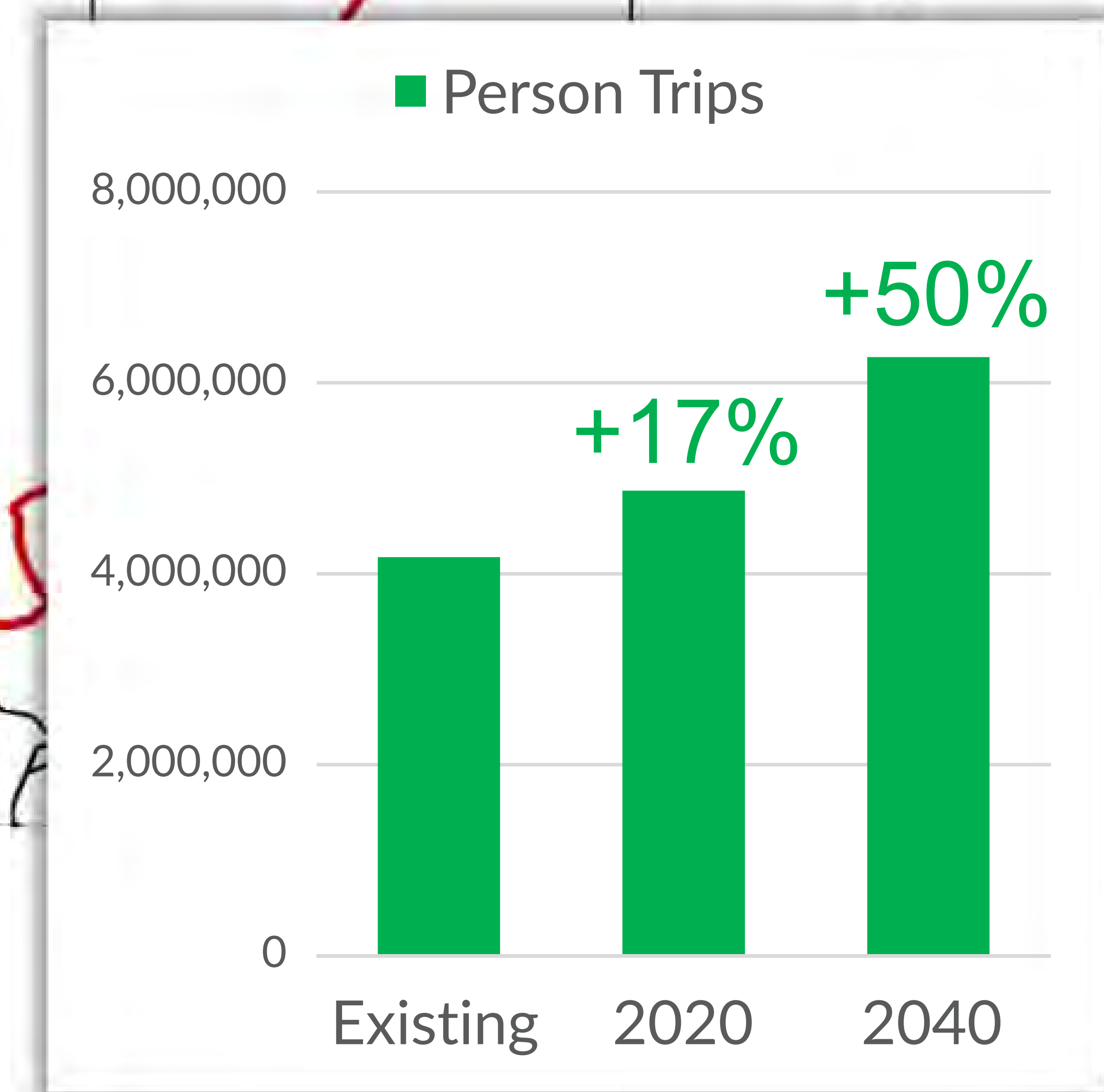
## I-5 JBLM VICINITY CONGESTION RELIEF PROJECT



DuPont Area



Region

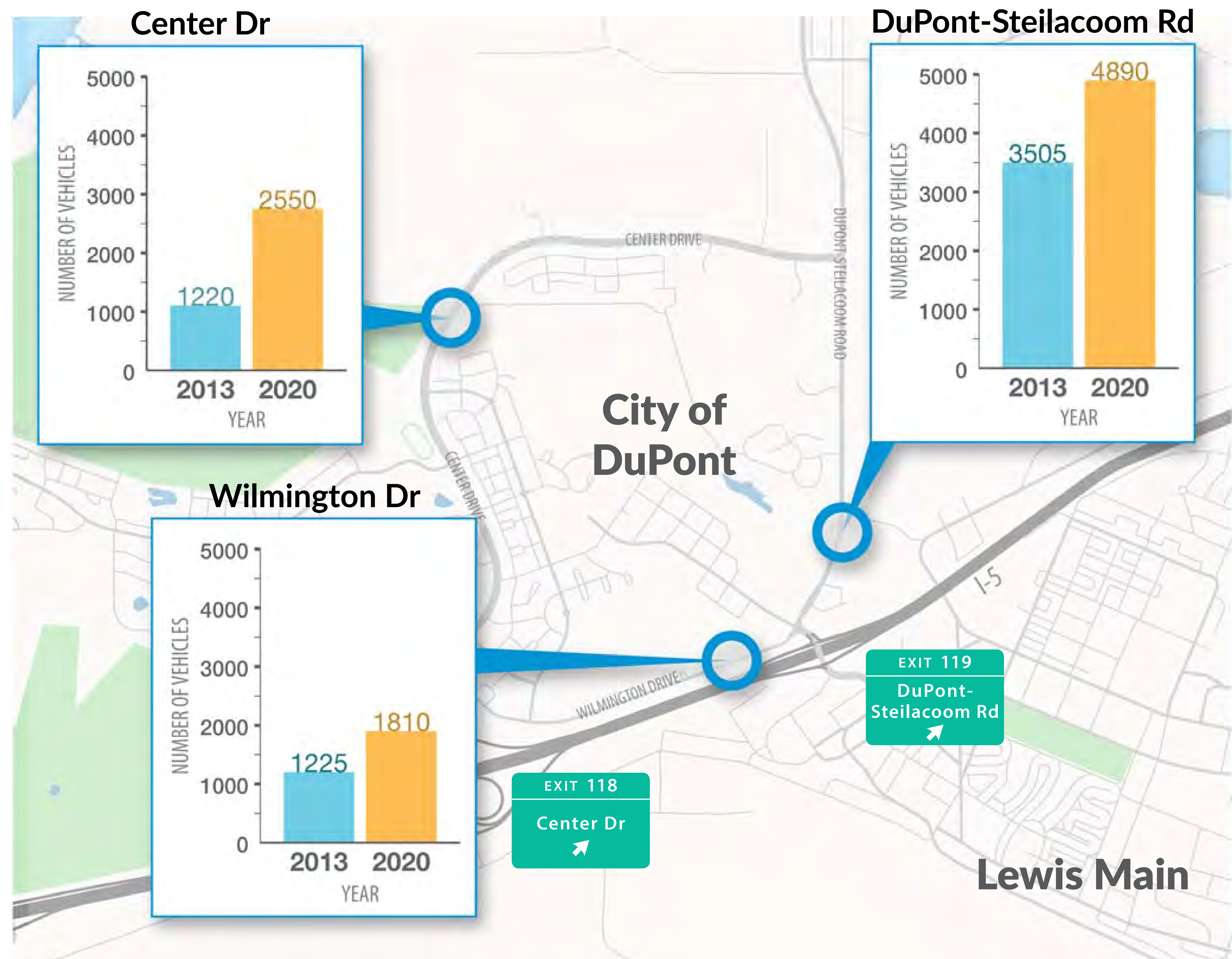


Travel growth data is based on City of DuPont Comprehensive Plan and Puget Sound Regional Council regional growth plans.

# LOCAL ROADWAY TRAFFIC GROWTH

## I-5 JBLM VICINITY CONGESTION RELIEF PROJECT

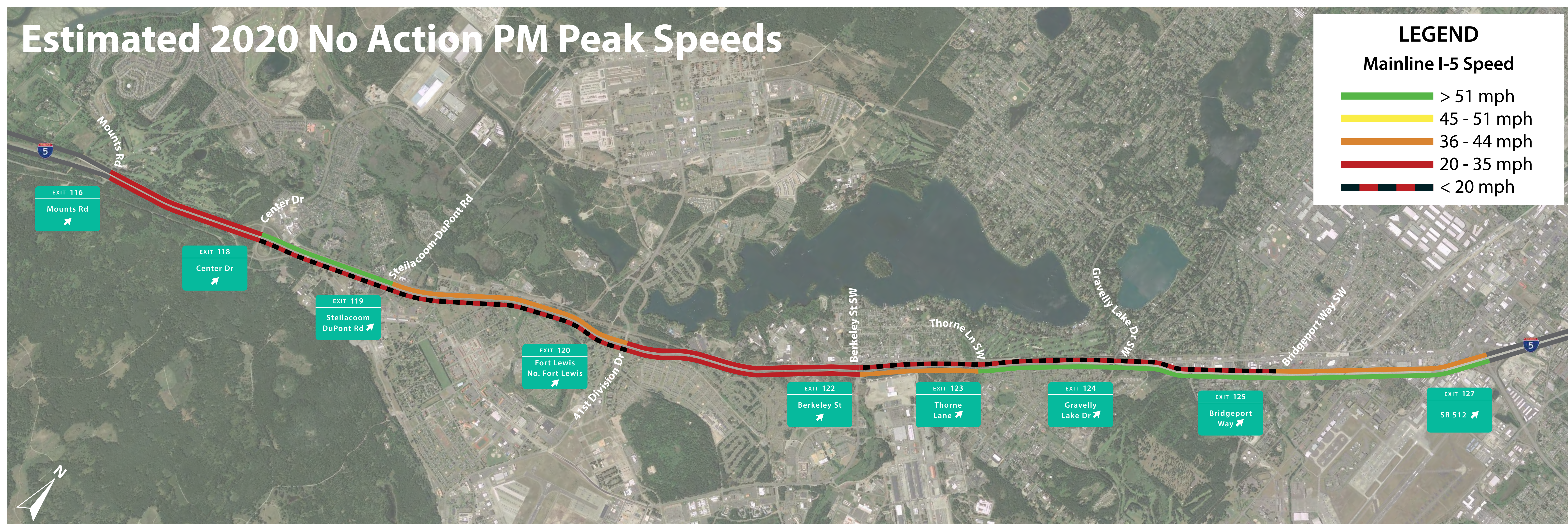
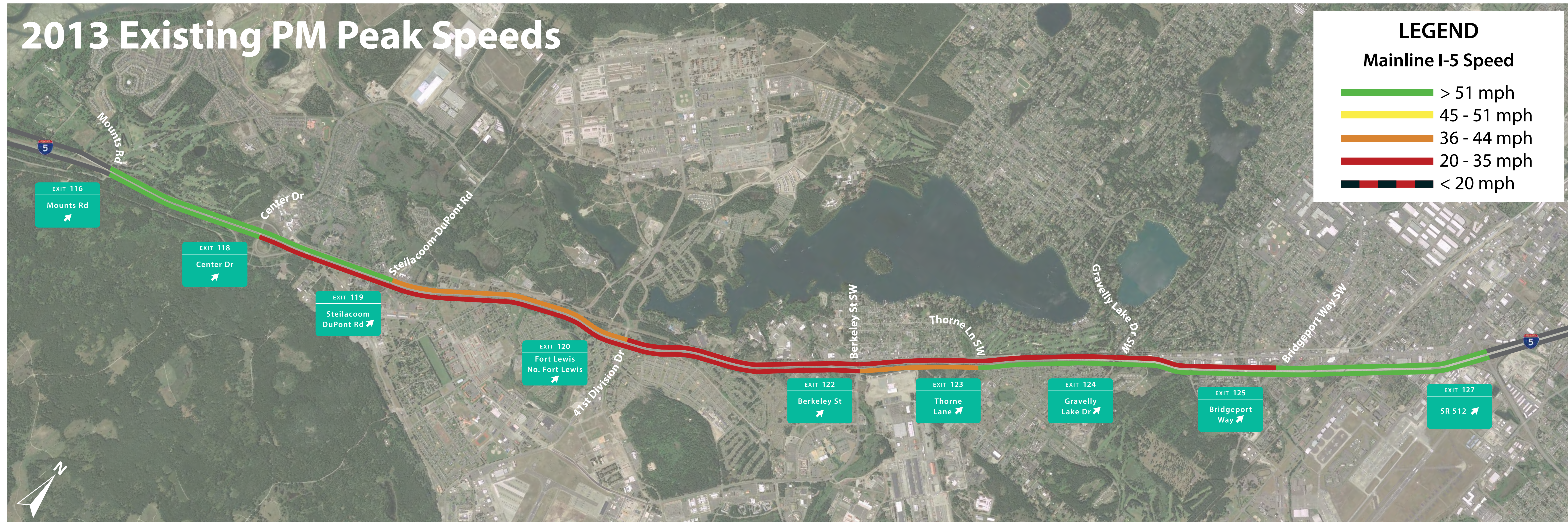
Existing vs.  
2020 No Build  
PM Peak Period  
(3 to 6 PM)



Local roadway traffic growth data is based on City of DuPont Comprehensive Plan and Puget Sound Regional Council regional growth plans.

# I-5 TRAVEL SPEEDS

## I-5 JBLM VICINITY CONGESTION RELIEF PROJECT



# DEMAND MET ON I-5 DURING PM PEAK PERIOD

## I-5 JBLM VICINITY CONGESTION RELIEF PROJECT

2013

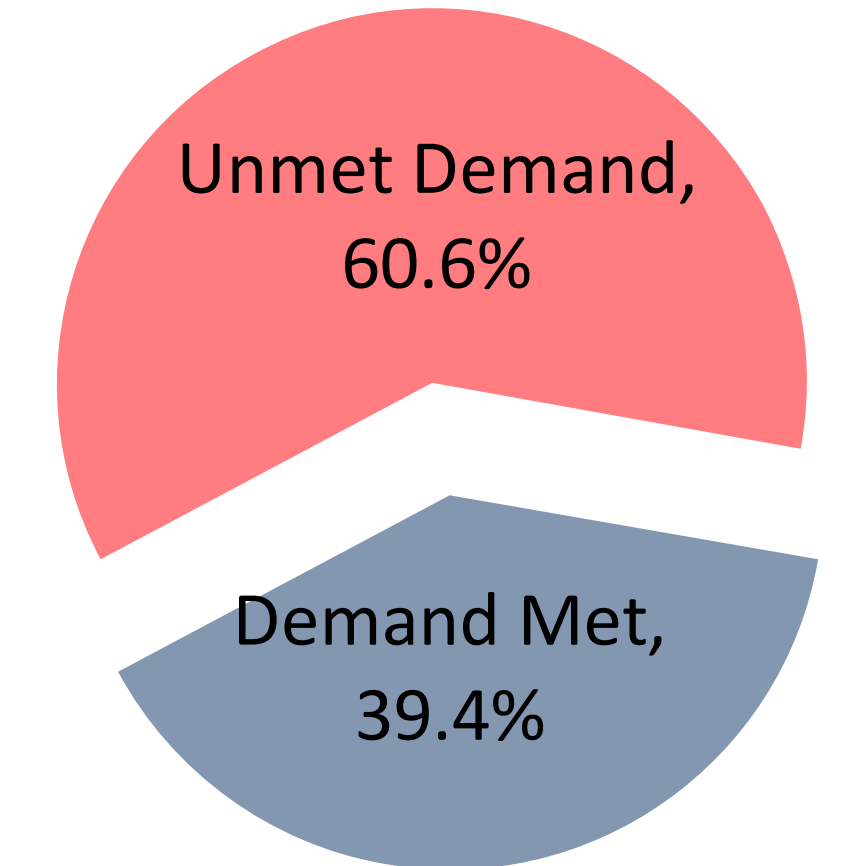
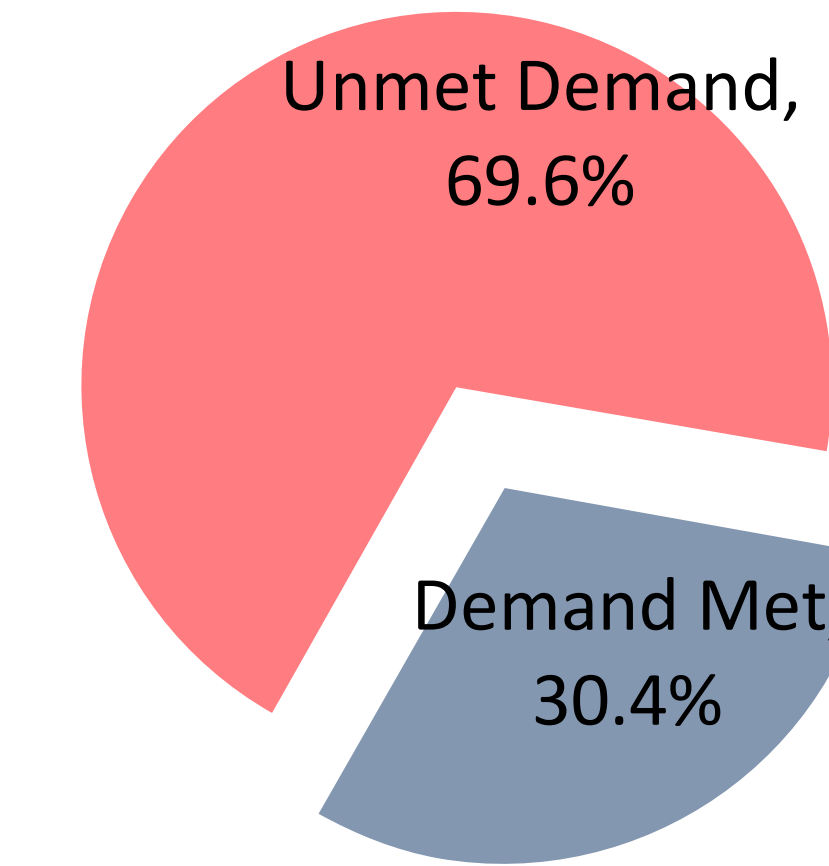
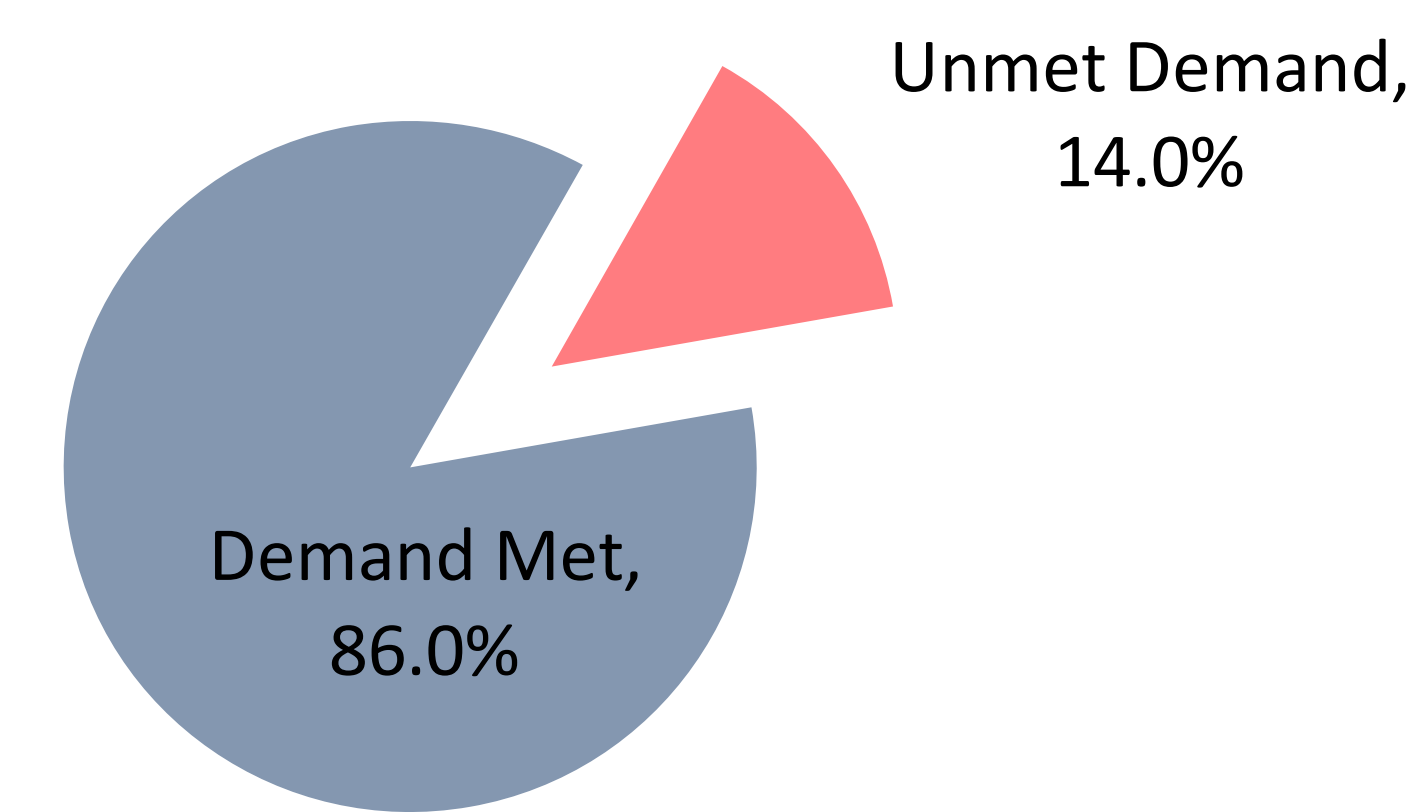
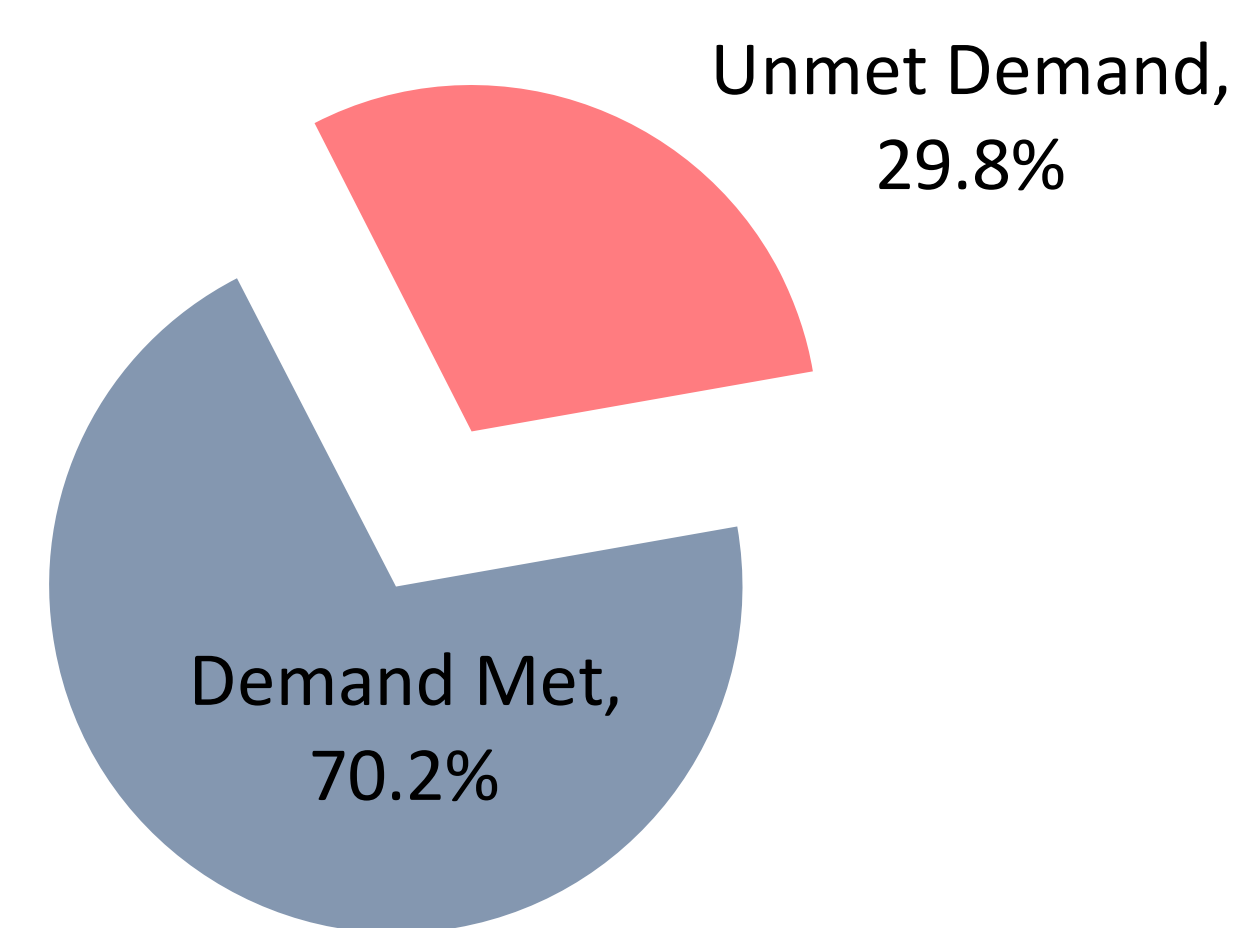
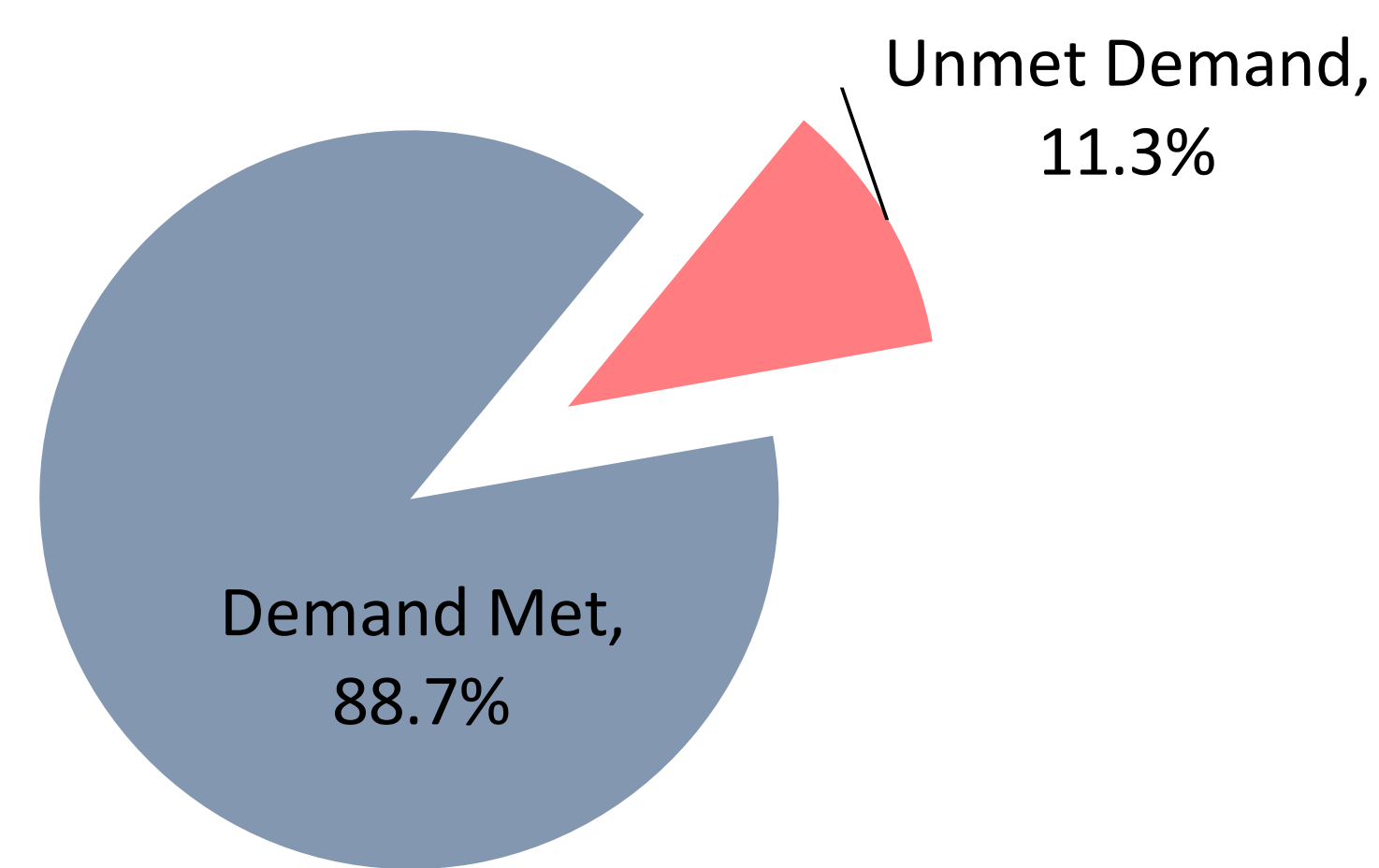
2020 - No Build

2020 - Build

2040 - No Build

2040 - Build

Demand on I-5 Met during 1-Hour PM Peak Period



Demand on I-5 Met during 3-Hour PM Peak Period

