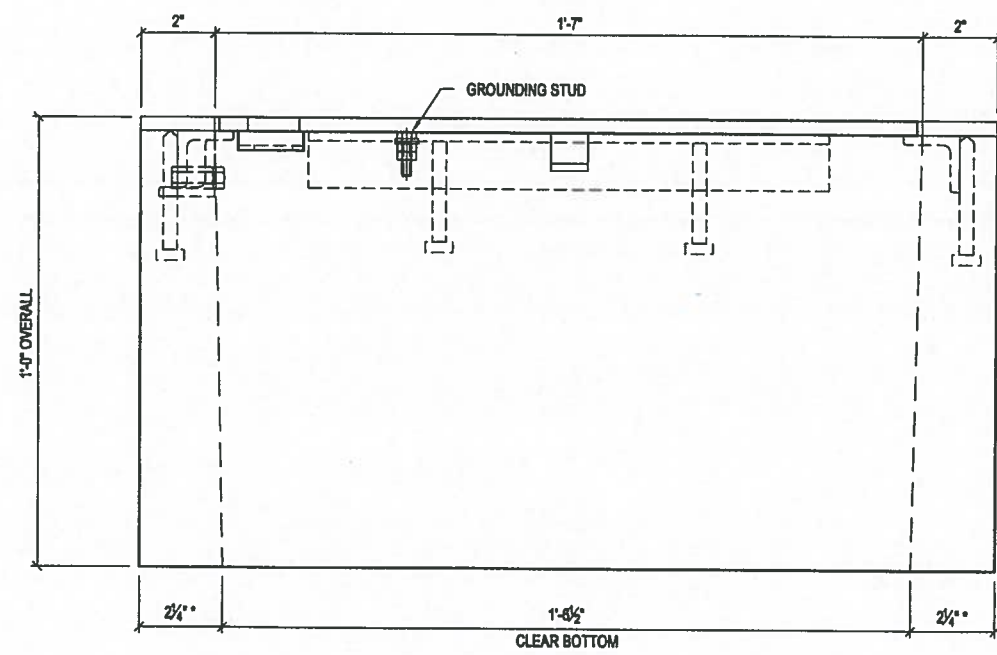
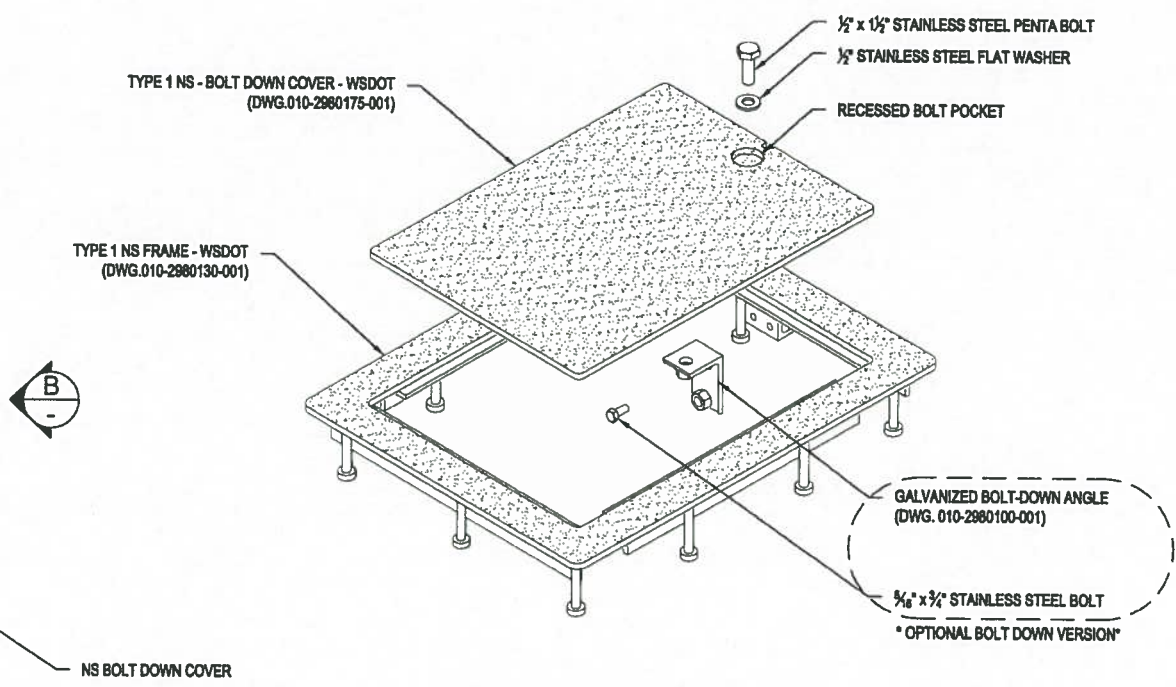


**PLAN VIEW**



**VIEW A**

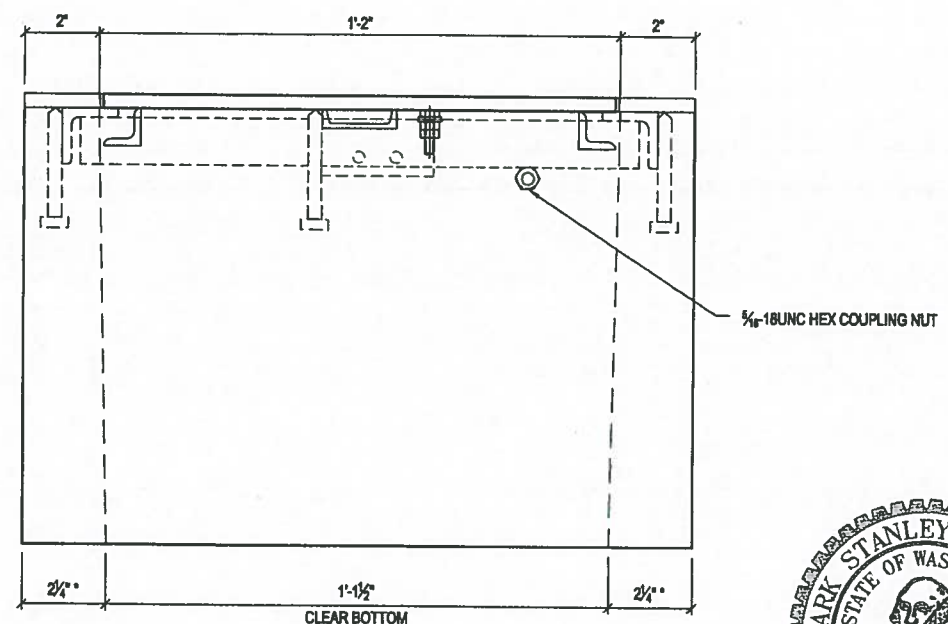


**DOOR/FRAME ASSEMBLY DETAIL**

- STRUCTURAL NOTES**
1. CONCRETE: 28 DAY COMPRESSIVE STRENGTH  $f_c = 4,000$  psi
  2. STEEL SHAPES: ASTM A-36 STRUCTURAL STEEL STANDARDS
  3. WWF: ASTM A-185 GRADE 65 (AASHTO M55)
  4. DESIGN: ACI-318-11 BUILDING CODE
  5. LOADS: ASTM C-857 "MINIMUM STRUCTURAL DESIGN LOADING FOR UNDERGROUND PRECAST CONCRETE UTILITY STRUCTURES" 22,500 LBS TEST LOAD ACTING OVER A 10" X 10" AREA 40 psf E.F.P. LATERAL SOIL PRESSURE 113 psf LIVE LOAD SURCHARGE TOP OF JUNCTION BOX AT FINISHED GRADE WATERTABLE BELOW BOTTOM OF JUNCTION BOX (ASSUMED)

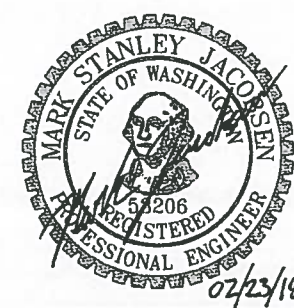
SHIPPING WEIGHT  
210 LBS

**APPROVED**  
Washington State Department of Transportation  
HQ Traffic Operations Office  
BY: *[Signature]* DATE: 3/29/2018



**VIEW B**

\* WALL THICKNESS WITH 1/4" DRAFT SHOWN.  
ACTUAL WALL DIMENSION 2 ± 1/4"

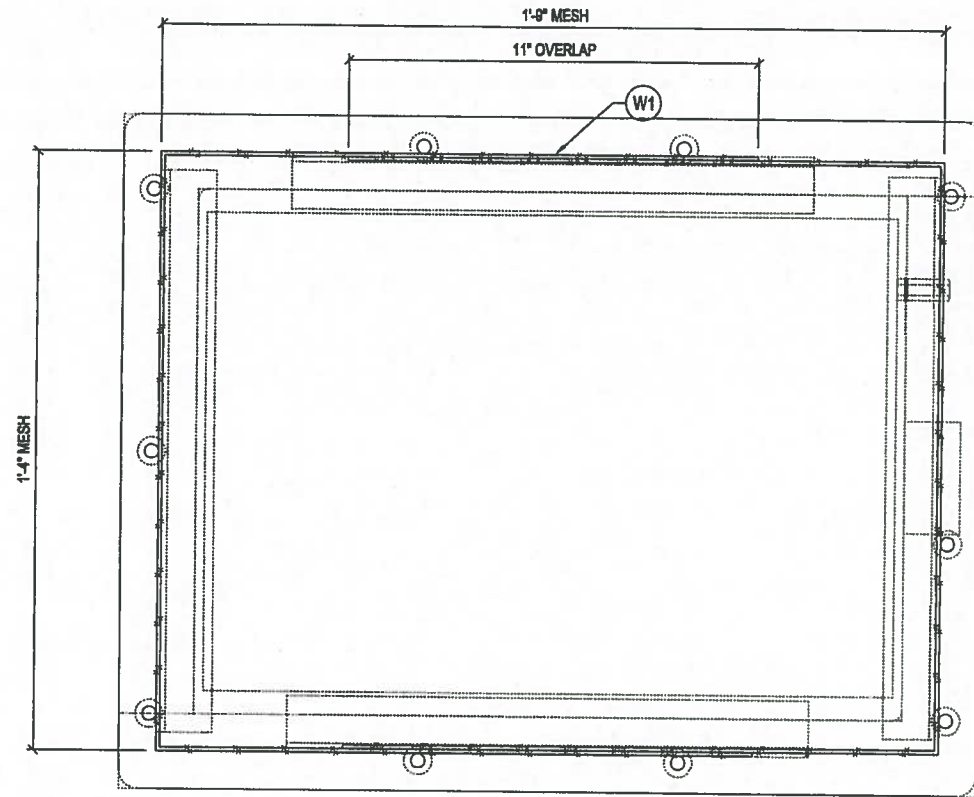


THIS DOCUMENT IS THE PROPERTY OF OLDCASTLE PRECAST, INC. IT IS CONFIDENTIAL, SUBMITTED FOR REFERENCE PURPOSES ONLY, AND SHALL NOT BE USED IN ANY WAY HARMFUL TO THE INTERESTS OF, OR WITHOUT THE WRITTEN PERMISSION OF OLDCASTLE PRECAST, INC. COPYRIGHT © 2017 OLDCASTLE PRECAST, INC. ALL RIGHTS RESERVED.

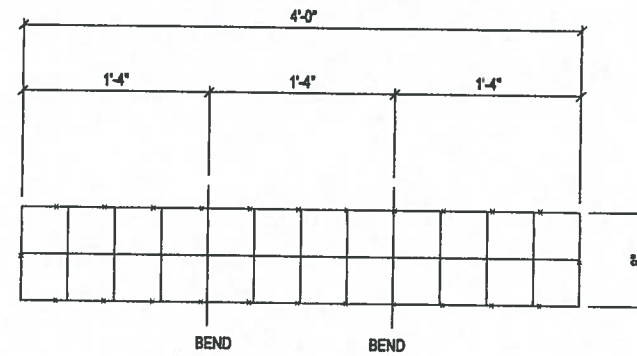
<b>TYPE 1 JUNCTION BOX w/ NS FRAME</b>					
CUSTOMER LAYOUT					
STANDARD PRODUCT					
CUSTOMER					
DATE	SALES	DRAWN	ENGINEER	CHECKED	SALES ORDER
03/07/2017		MKC			
DRAWING NUMBER				REVISION	SHEET
010-0650100-001				B REV DATE 2/20/18	1 OF 3

B	REVISED BOLT DOWN DRAWING NUMBER	CJC
REVISION	DESCRIPTION	BY



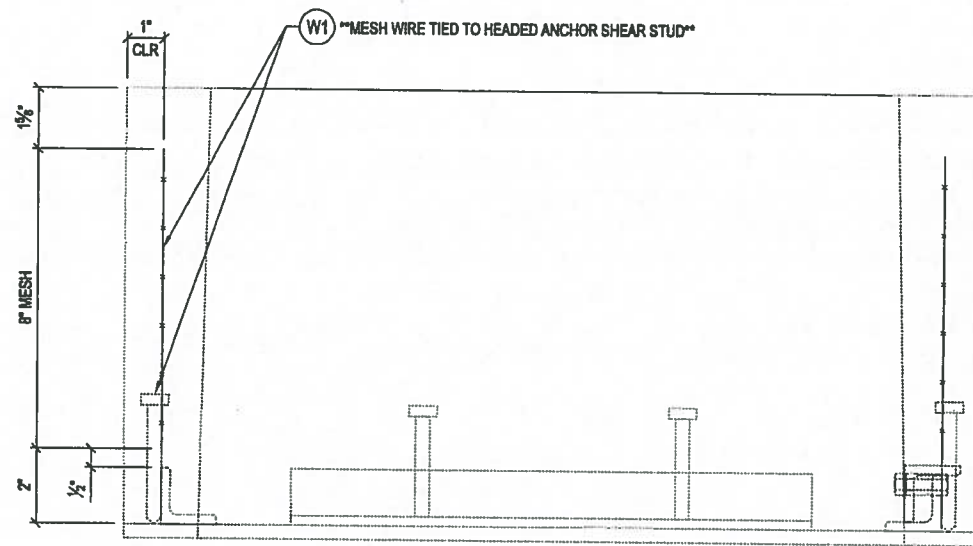


**PLAN VIEW**  
REINFORCEMENT (SHOWN AS POURED)



**W1 DETAIL**  
(OVERLAP = 11")

REINFORCEMENT CUT LIST				
#	QTY	MATERIAL	LENGTH	SHAPE
W1	2	MESH 4X4 - W2.9 X W2.9		BENT



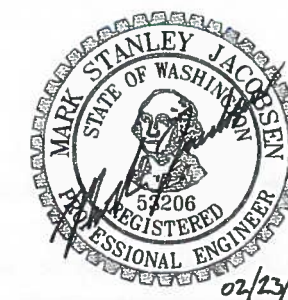
**VIEW A**

**APPROVED**

Washington State Department of Transportation

HQ Traffic Operations Office

BY: [Signature] DATE: 3/29/2018



**Oldcastle Precast**  
P.O. BOX 538 ALBURN, WA 99071-0538  
PHONE: 800-852-1538 FAX: 253-735-4301

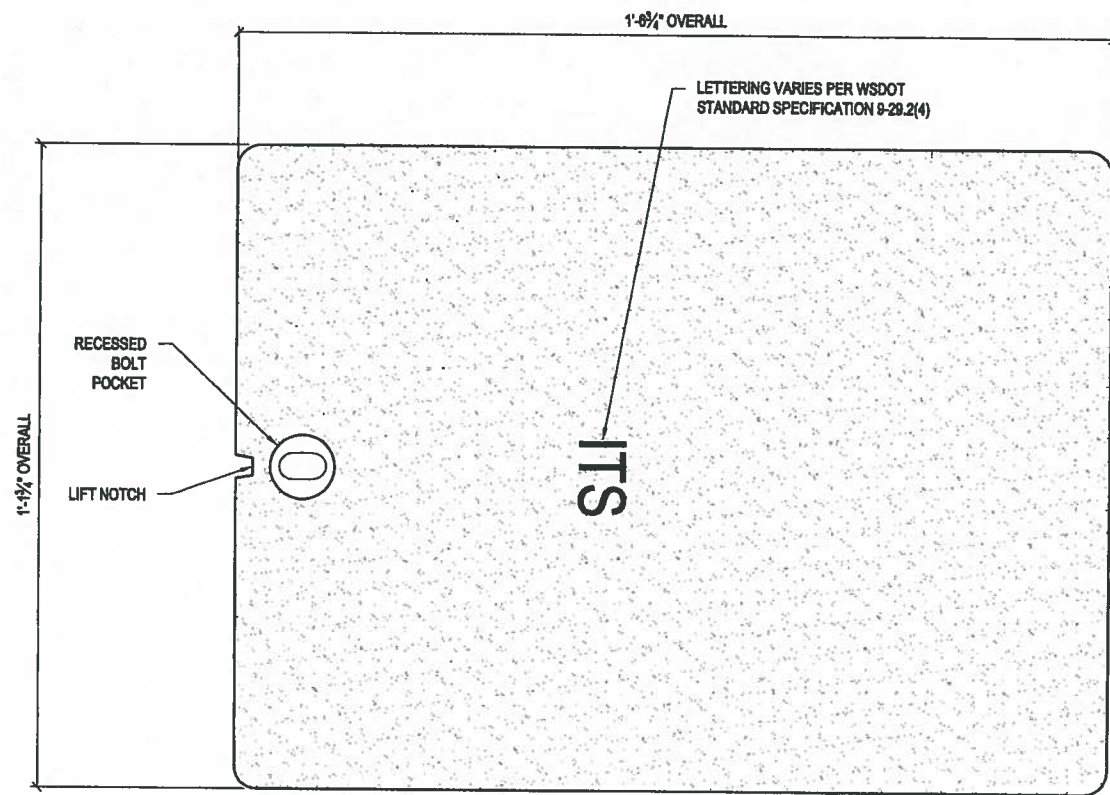
THIS DOCUMENT IS THE PROPERTY OF OLDCASTLE PRECAST, INC. IT IS CONFIDENTIAL, SUBMITTED FOR REFERENCE PURPOSES ONLY, AND SHALL NOT BE USED IN ANY WAY INJURIOUS TO THE INTERESTS OF, OR WITHOUT THE WRITTEN PERMISSION OF OLDCASTLE PRECAST, INC. COPYRIGHT © 2017 OLDCASTLE PRECAST, INC. ALL RIGHTS RESERVED.

**TYPE 1 JUNCTION BOX w/ NS FRAME**  
REINFORCEMENT DETAILS

STANDARD PRODUCT  
CUSTOMER

DATE	SALES	DRAWN	ENGINEER	CHECKED	SALES ORDER
03/07/2017		MKC			
DRAWING NUMBER				REVISION	SHEET
010-0650100-001				A REV DATE 2/20/18	3 OF 3

REVISION	DESCRIPTION	BY
A	ADDED OVERLAP DIMENSION TO PLAN VIEW	CJC



**PLAN VIEW**



**APPROVED**

Washington State Department of Transportation  
 HQ Traffic Operations Office

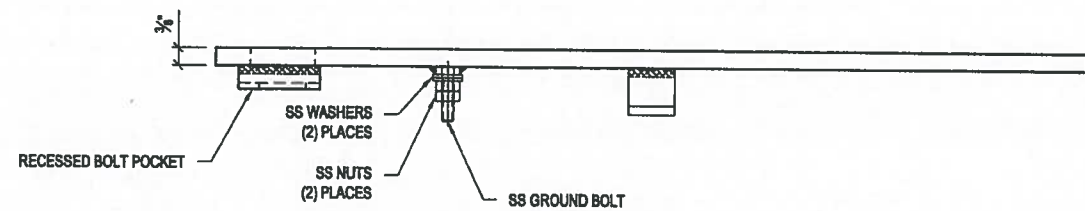
BY: [Signature] DATE: 3/29/2018

**STRUCTURAL NOTES**

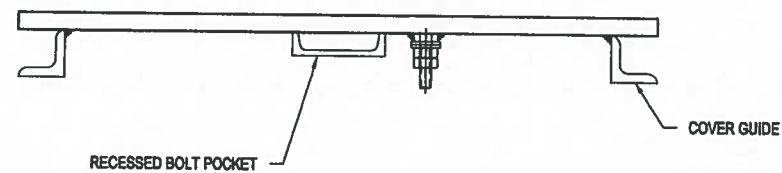
1. MATERIAL: ASTM A36 STRUCTURAL STEEL STANDARDS
2. ASSEMBLY: AWS D1.1 WELDING STANDARDS
3. COATING: ASTM A123 HOT-DIP GALVANIZING STANDARDS

**GENERAL NOTES**

1. FRAMES AVAILABLE TO USE WITH THIS DOOR:  
 2980130 (TYPE 1 NS FRAME - WSDOT)



**VIEW A**



**VIEW B**

**ENGINEERS SEAL:**

DOOR SHOP DRAWINGS REVIEWED FOR GENERAL CONFORMANCE TO THE INTENT OF WSDOT STANDARD PLAN J-40.10-04 ONLY. DOOR AND FRAME TO BE TESTED IN ACCORDANCE TO SECTION 9-29.2(5) OF THE WSDOT STANDARD SPECIFICATION TO ENSURE STRUCTURAL SUITABILITY.

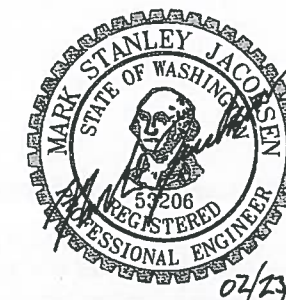


THIS DOCUMENT IS THE PROPERTY OF OLDCASTLE PRECAST, INC. IT IS CONFIDENTIAL, SUBMITTED FOR REFERENCE PURPOSES ONLY, AND SHALL NOT BE USED IN ANY WAY HARMFUL TO THE INTERESTS OF, OR WITHOUT THE WRITTEN PERMISSION OF OLDCASTLE PRECAST, INC. COPYRIGHT © 2017 OLDCASTLE PRECAST, INC. ALL RIGHTS RESERVED.

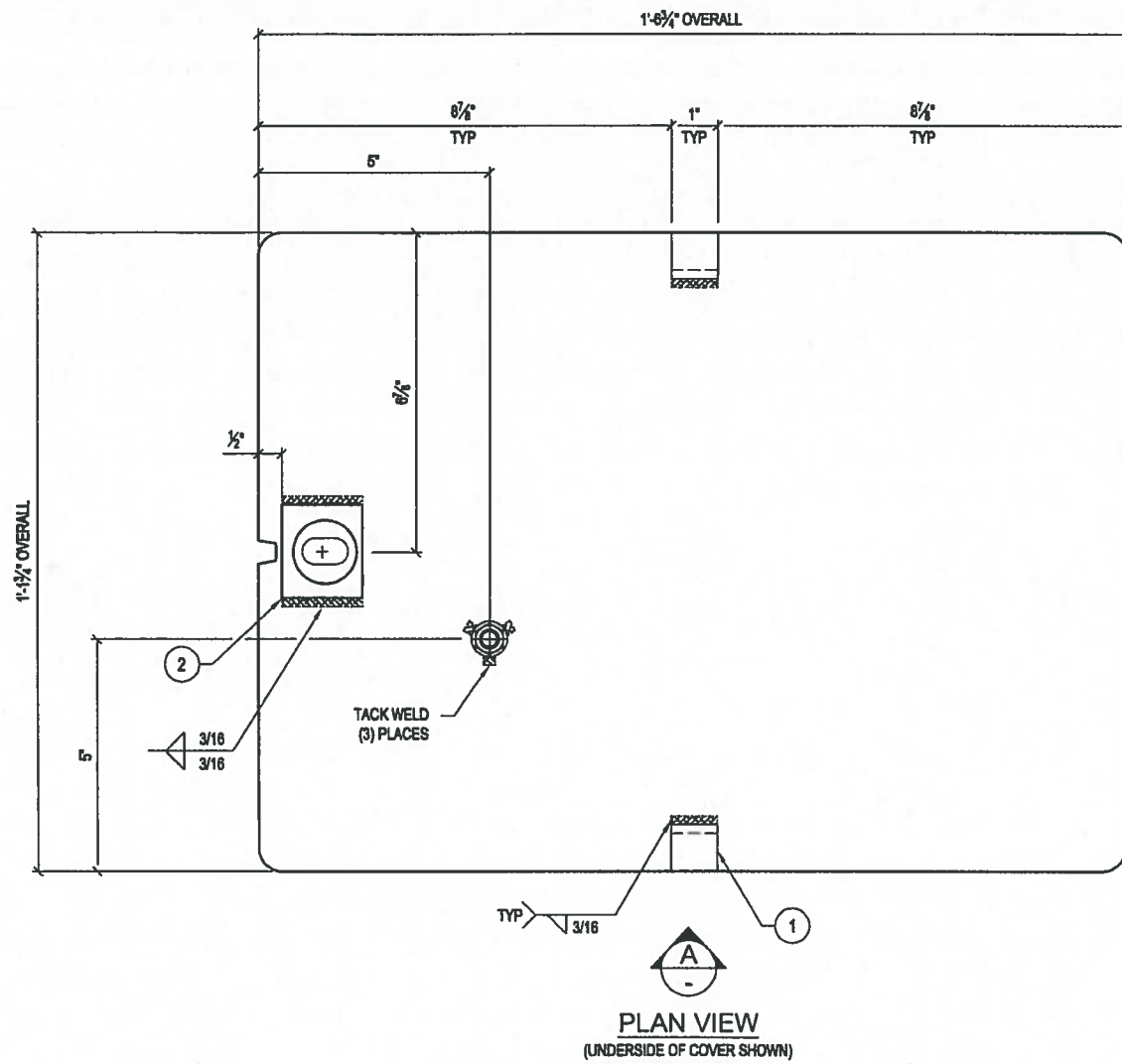
**TYPE 1 NS - BOLT DOWN COVER - WSDOT**  
 CUSTOMER LAYOUT

STANDARD PRODUCT  
 CUSTOMER

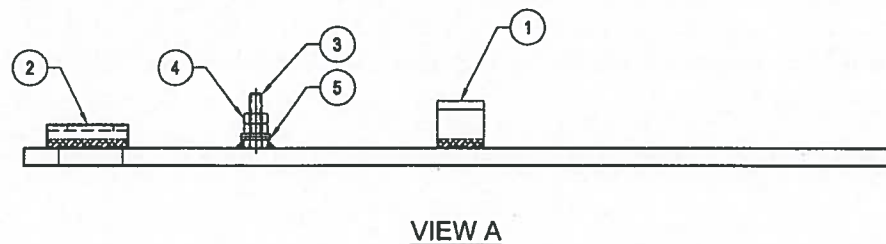
DATE	SALES	DRAWN	ENGINEER	CHECKED	SALES ORDER
03/02/2017		MKC			
DRAWING NUMBER					SHEET
010-2980175-001					1 OF 2
REVISION A					REV DATE
					2/20/2018



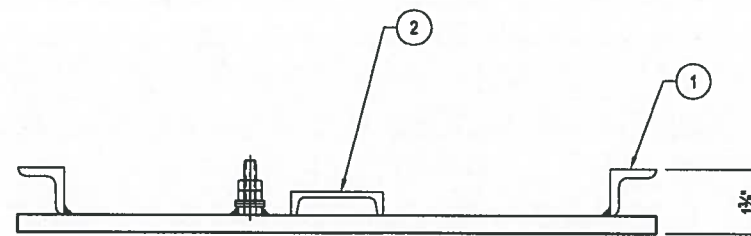
REVISION	DESCRIPTION	BY
A	NO CHANGES TO THIS SHEET	CJC



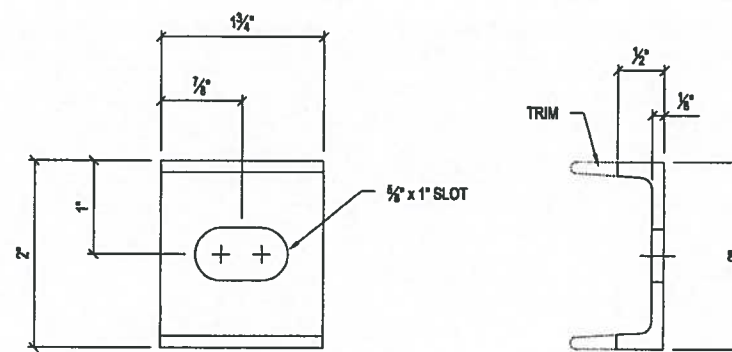
PLAN VIEW  
(UNDERSIDE OF COVER SHOWN)



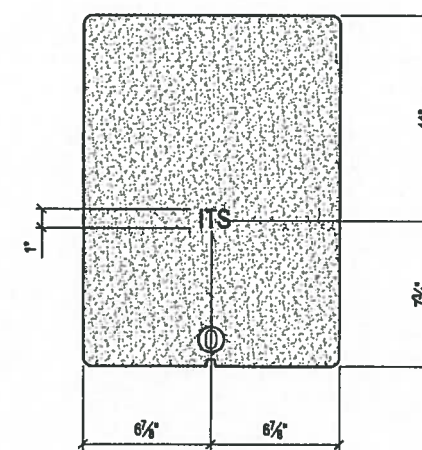
VIEW A



VIEW B



PART No. 2



LETTERING DETAIL

SHOP NOTES

1. OVERALL DIMENSIONS HAVE A TOLERANCE OF  $\pm 1/16$ "
2. ALL WELDS ARE  $3/8$ " FILLET UNLESS OTHERWISE NOTED
3. GRIND ALL SHARP EDGES
4. COVER TO BE HOT DIPPED GALVANIZED AFTER FABRICATION
5. WEIGHT BEFORE GALVANIZING: 30 lbs

BILL OF MATERIALS

#	QUANTITY	DESCRIPTION	ITEM #
	1 ea	SLIPNOT PLATE 3/8"-TYPE1BD COVER PLATE	5541015
	0.19 lbs	ANGLE 1" x 1" x 3/16"	5510200
	1 ea	CHANNEL 2" x 1" x 1/8"	5310045
	30 lbs	GALVANIZING PER Lb. FOR SLIPNOT	5800010
3	1 ea	1/4" -20 NC x 1" 18-8 SCREW - SS	5182029
4	2 ea	1/4" -20 NC FINISHED HEX NUT - SS	5182027
5	2 ea	1/4" 18-8 FLAT WASHER - SS	5182028

LAYOUT CUT LIST

#	QUANTITY	DESCRIPTION	SIZE
1	2 ea	ANGLE 1" x 1" x 3/16"	0'-1"
2	1 ea	CHANNEL 2" x 1" x 1/8"	SHT 2

ENGINEERS SEAL:

DOOR SHOP DRAWINGS REVIEWED FOR GENERAL CONFORMANCE TO THE INTENT OF WSDOT STANDARD PLAN J-40.10-04 ONLY. DOOR AND FRAME TO BE TESTED IN ACCORDANCE TO SECTION 9-29.2(5) OF THE WSDOT STANDARD SPECIFICATION TO ENSURE STRUCTURAL SUITABILITY.



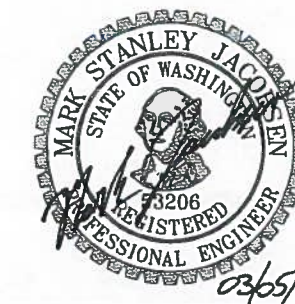
THIS DOCUMENT IS THE PROPERTY OF OLDCASTLE PRECAST, INC. IT IS CONFIDENTIAL, SUBMITTED FOR REFERENCE PURPOSES ONLY, AND SHALL NOT BE USED IN ANY WAY UNLESS TO THE INTERESTS OF, OR WITHOUT THE WRITTEN PERMISSION OF OLDCASTLE PRECAST, INC. COPYRIGHT © 2017 OLDCASTLE PRECAST, INC. ALL RIGHTS RESERVED.

TYPE 1 NS - BOLT DOWN COVER -WSDOT  
ASSEMBLY & WELD DETAILS

STANDARD PRODUCT

CUSTOMER

DATE	SALES	DRAWN	ENGINEER	CHECKED	SALES ORDER
03/02/2017		MKC			
DRAWING NUMBER				REVISION	SHEET
010-2980175-001				B	2 OF 2
				REV DATE	
				2/20/2018	



**APPROVED**  
Washington State Department of Transportation  
HQ Traffic Operations Office  
BY: [Signature] DATE: 3/29/2018

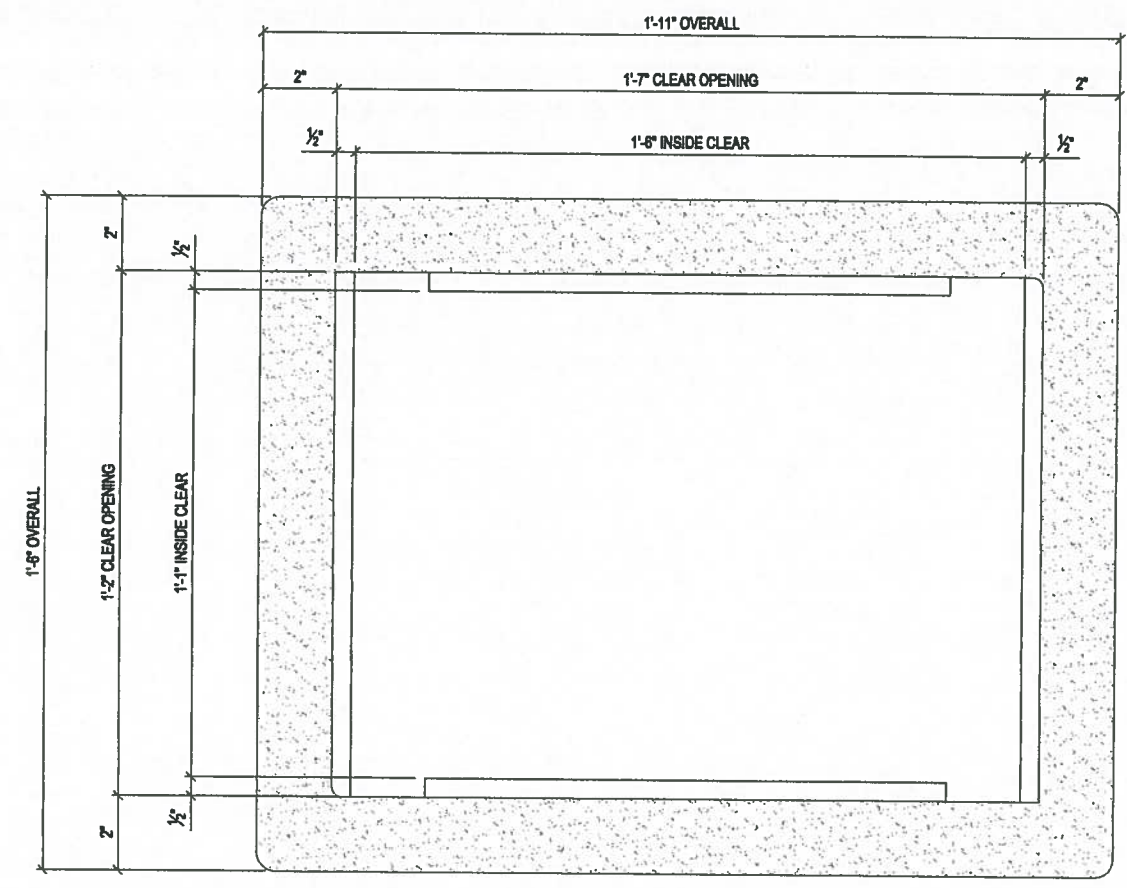
REVISION	DESCRIPTION	BY
B	REVISED PART NO 2	CJC

**STRUCTURAL NOTES**

- MATERIAL: ASTM A36 STRUCTURAL STEEL STANDARDS
- ASSEMBLY: AWS D1.1 WELDING STANDARDS
- COATING: ASTM A123 HOT-DIP GALVANIZING STANDARDS

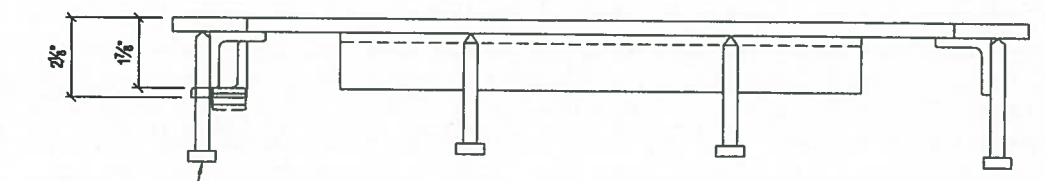
**GENERAL NOTES**

- FRAMES/DOORS AVAILABLE TO USE WITH THIS DOOR:  
2880175 (TYPE 1 NS - BOLT DOWN COVER - WSDOT)

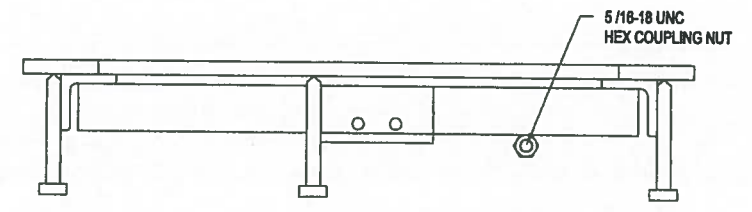


**APPROVED**

Washington State Department of Transportation  
 HQ Traffic Operations Office  
 BY: [Signature] DATE: 3/29/2018



VIEW A

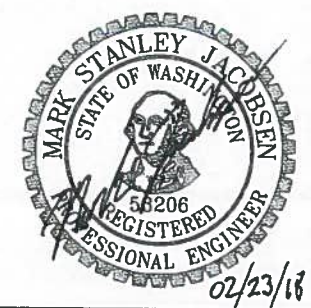


VIEW B

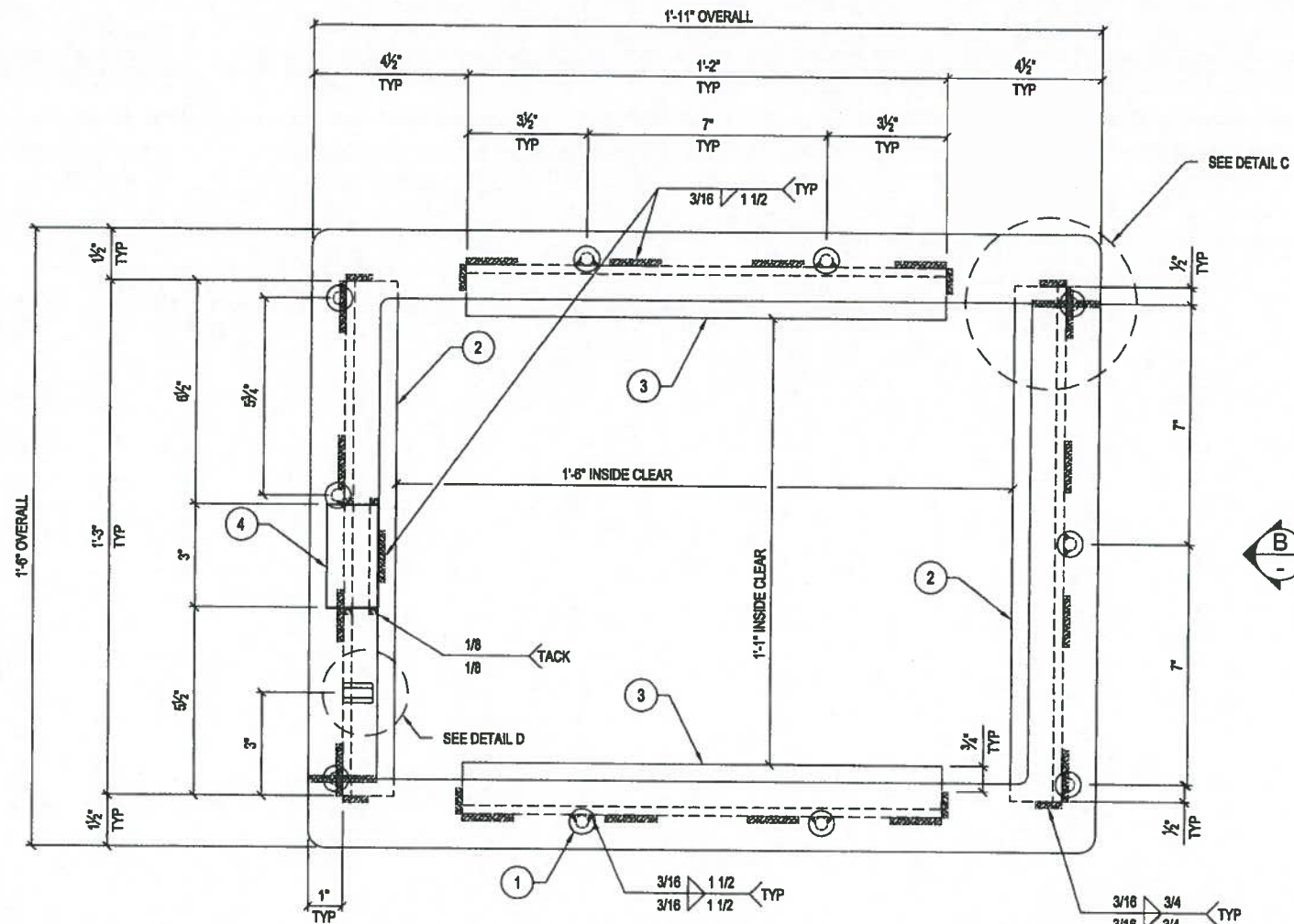


THIS DOCUMENT IS THE PROPERTY OF OLDCASTLE PRECAST, INC. IT IS CONFIDENTIAL, SUBMITTED FOR REFERENCE PURPOSES ONLY, AND SHALL NOT BE USED IN ANY WAY UNLESS TO THE INTERESTS OF, OR WITHOUT THE WRITTEN PERMISSION OF OLDCASTLE PRECAST, INC. COPYRIGHT © 2017 OLDCASTLE PRECAST, INC. ALL RIGHTS RESERVED.

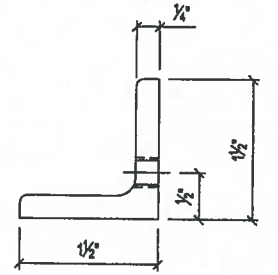
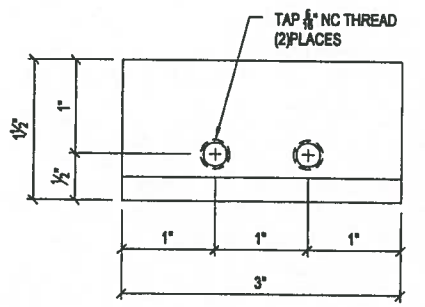
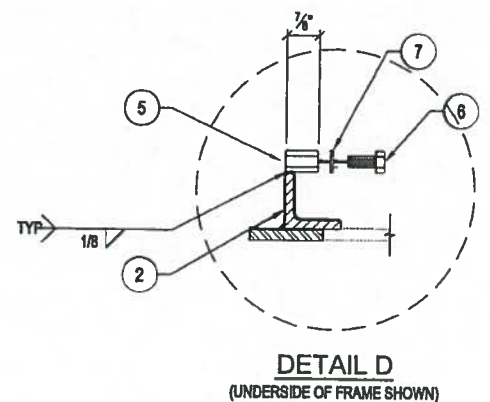
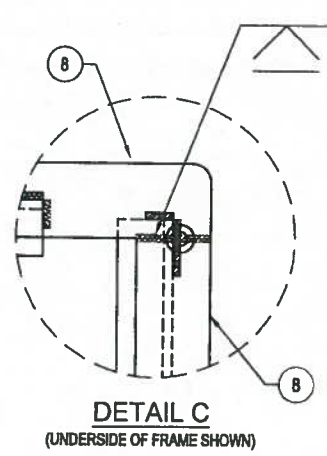
<b>TYPE 1 NS FRAME - WSDOT</b>					
CUSTOMER LAYOUT					
STANDARD PRODUCT					
CUSTOMER					
DATE	SALES	DRAWN	ENGINEER	CHECKED	SALES ORDER
03/02/2017		MKC			
DRAWING NUMBER				REVISION	SHEET
010-2980130-001				B	1 OF 2
				REV DATE	
				2/20/2016	



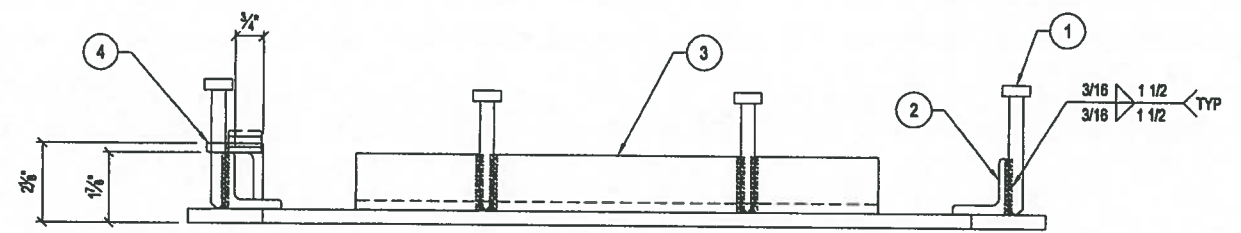
B	NO CHANGES TO THIS SHEET	CJC
REVISION	DESCRIPTION	BY



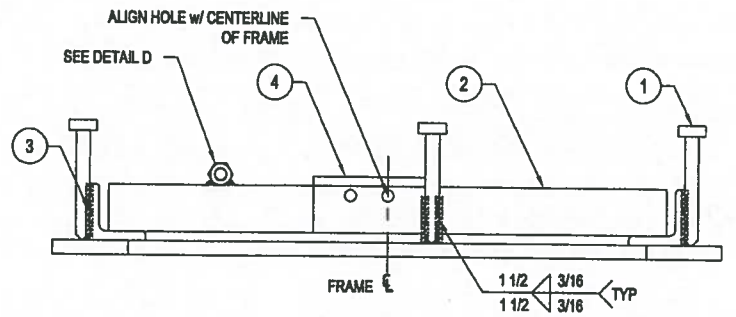
**PLAN VIEW**



**PART No. 4**



**VIEW A**



**VIEW B**

**SHOP NOTES**

1. OVERALL DIMENSIONS HAVE A TOLERANCE OF  $\pm 1/16$ "
2. ALL WELDS ARE  $3/16$ " FILLET UNLESS OTHERWISE NOTED
3. GRIND ALL SHARP EDGES
4. FRAME TO BE HOT DIPPED GALVANIZED AFTER FABRICATION
5. WEIGHT BEFORE GALVANIZING: 56 lbs
6. PART 8 MAY BE SINGLE PIECE IN LIEU OF 2 PIECE FRAME

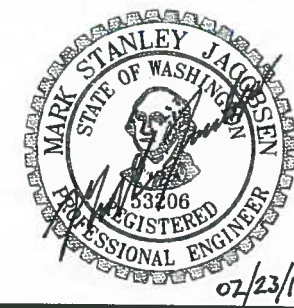
**BILL OF MATERIALS**

#	QUANTITY	DESCRIPTION	ITEM #
1	10 ea	STUD 3/8" X 3-1/8"	5810455
	11.70 lbs	ANGLE 1-1/2" X 1-1/2" X 1/4"	5510211
	56 lbs	GALVANIZING PER LB. FOR SLIPNOT	5800010
5	1 ea	5/16" x 7/8" COUPLING NUT - SS	5182032
6	1 ea	5/16" x 3/4" HEX CAP SCREW - SS	5182033
7	3 ea	5/16" FLAT WASHER - SS	5182034
8	2 ea	SLIPNOT PLATE 3/8"-TYPE 1 FRAME PIECE	5541010

**LAYOUT CUT LIST**

#	QUANTITY	DESCRIPTION	SIZE
2	2 ea	ANGLE 1- 1/2" x 1- 1/2" x 1/4"	15"
3	2 ea	ANGLE 1- 1/2" x 1- 1/2" x 1/4"	14"
4	1 ea	ANGLE 1- 1/2" x 1- 1/2" x 1/4"	SHT 2

**APPROVED**  
 Washington State Department of Transportation  
 HQ Traffic Operations Office  
 BY: *[Signature]* DATE: 3/29/2018



REVISION	DESCRIPTION	BY
C	CHANGED WELD IN PLAN VIEW TO TACK WELD - ADDED SHOP NOTE 6 - REVISED BOM	CJC

**Oldcastle Precast**  
 P.O. BOX 488 ALBURN, WA 98071-0588  
 PHONE: 800-882-1838 FAX: 253-726-4261

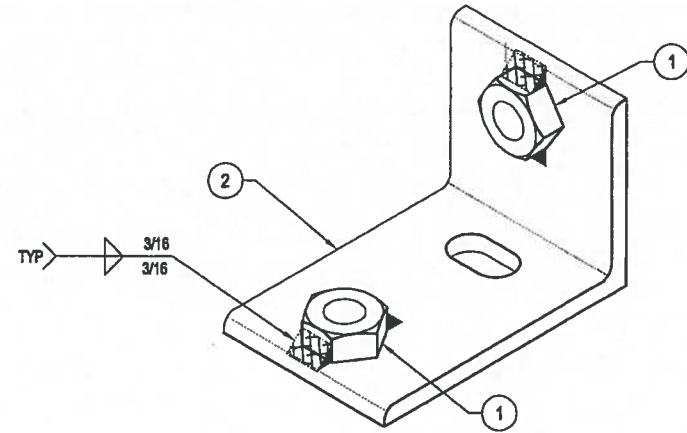
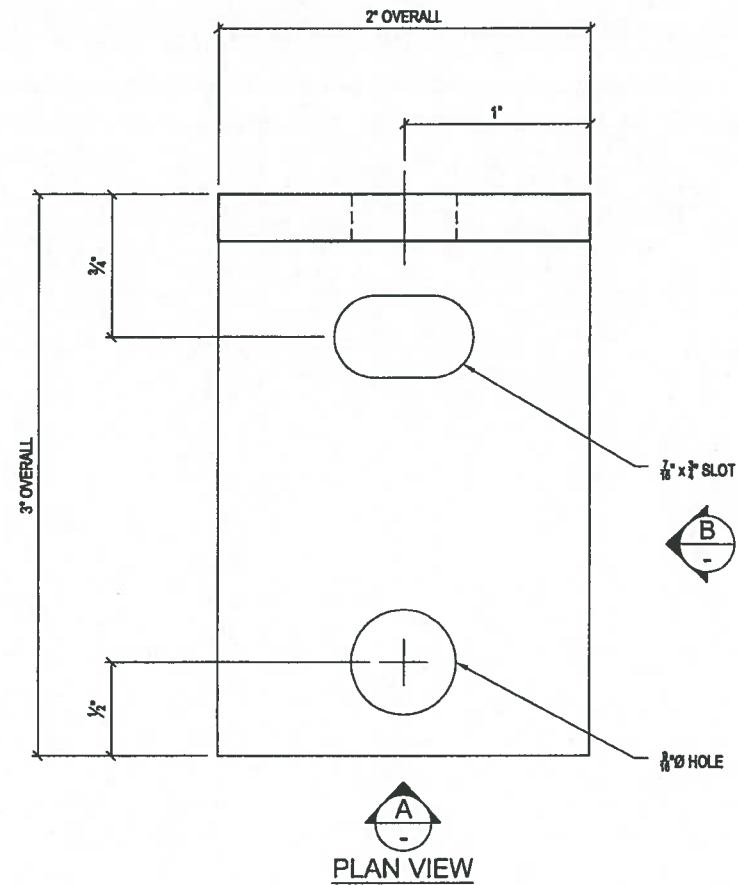
THIS DOCUMENT IS THE PROPERTY OF OLDCASTLE PRECAST, INC. IT IS CONFIDENTIAL, SUBMITTED FOR REFERENCE PURPOSES ONLY, AND SHALL NOT BE USED IN ANY WAY PURSUANT TO THE INTERESTS OF, OR WITHOUT THE WRITTEN PERMISSION OF OLDCASTLE PRECAST, INC. COPYRIGHT © 2017 OLDCASTLE PRECAST, INC. ALL RIGHTS RESERVED.

**TYPE 1 NS FRAME - WSDOT**  
 ASSEMBLY & WELD DETAILS

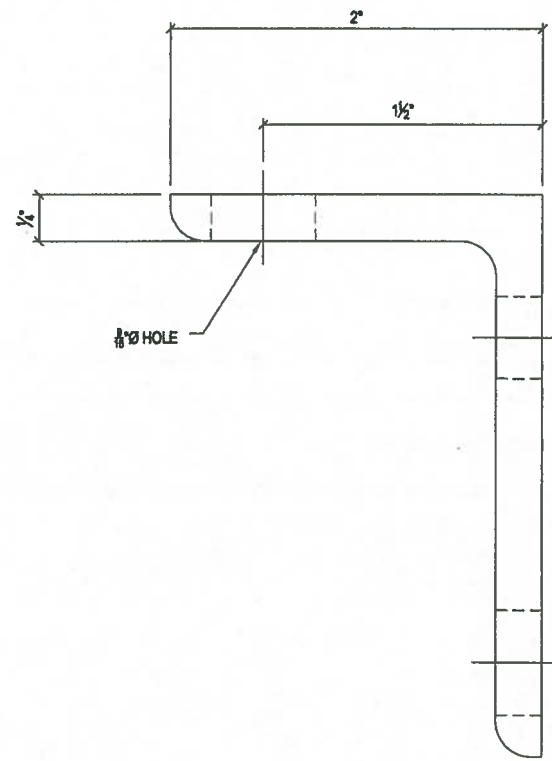
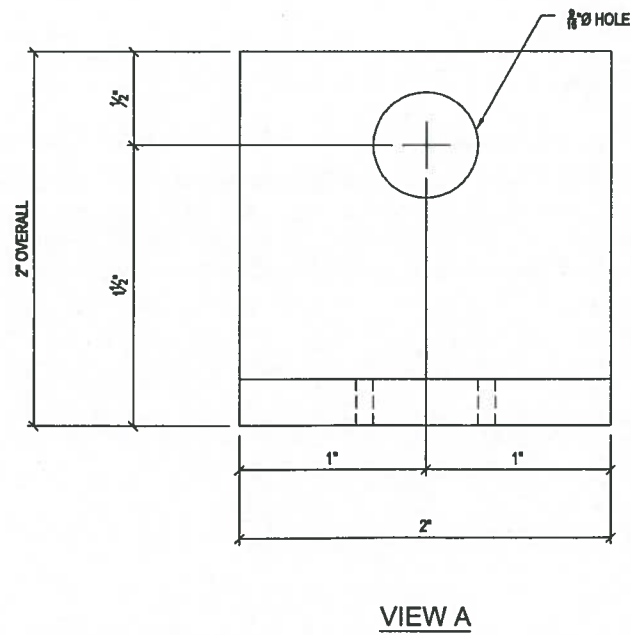
STANDARD PRODUCT  
 CUSTOMER:

DATE	SALES	DRAWN	ENGINEER	CHECKED	SALES ORDER
03/02/2017		MKC			

DRAWING NUMBER: 010-2980130-001  
 REVISION C  
 REV DATE 2/20/2018  
 SHEET 2 OF 2



**BOLT DOWN ASSEMBLY**



**STRUCTURAL NOTES**

1. MATERIAL: ASTM A36 STRUCTURAL STEEL STANDARDS
2. ASSEMBLY: AWS D1.1 WELDING STANDARDS
3. COATING: ASTM A123 HOT-DIP GALVANIZING STANDARDS

**BILL OF MATERIALS**

#	QUANTITY	DESCRIPTION	ITEM #
1	2 ea	1/2" -13 NC 304 SS FINISHED HEX NUT	5182026
	0.68 lbs	ANGLE 3" x 2" x 1/4"	5510220
	2 lbs	GALVANIZING PER Lb.	5800000

**LAYOUT CUT LIST**

#	QUANTITY	DESCRIPTION	SIZE
2	1 ea	ANGLE 2" x 3" x 1/4"	Z

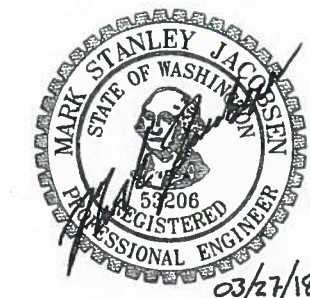
**BILL OF MATERIALS - KIT**

#	QUANTITY	DESCRIPTION	ITEM #
	1 ea	BOLT DOWN ANGLE - WSDOT	2980100
	1 ea	1/2" x 1 1/2" PENTA HEAD - SS	5182030
	1 ea	5/16" 3/4" HEX CAP SCREW - SS	5182033

**APPROVED**

Washington State Department of Transportation  
 HQ Traffic Operations Office

BY: *[Signature]* DATE: 3/29/2018



THIS DOCUMENT IS THE PROPERTY OF OLDCASTLE PRECAST, INC. IT IS CONFIDENTIAL, SUBMITTED FOR REFERENCE PURPOSES ONLY, AND SHALL NOT BE USED IN ANY WAY UNLESS TO THE INTERESTS OF, OR WITHOUT THE WRITTEN PERMISSION OF OLDCASTLE PRECAST, INC. COPYRIGHT © 2018 OLDCASTLE PRECAST, INC. ALL RIGHTS RESERVED.

**BOLT DOWN ANGLE - WSDOT**  
 PART DETAILS  
 STANDARD PRODUCT

CUSTOMER					
WSDOT					
DATE	SALES	DRAWN	ENGINEER	CHECKED	SALES ORDER
03/09/2017		MKC			
DRAWING NUMBER				REVISION	SHEET
010-2980100-001				A	1 OF 1
				REV DATE	
				3/23/18	

REVISION	DESCRIPTION	BY
A	CHANGED DRAWING NUMBER / UPDATED BOM	CJC