

PIPE ALLOWANCES	
PIPE MATERIAL	MAXIMUM INSIDE DIAMETER
REINFORCED OR PLAIN CONCRETE	18"
ALL METAL PIPE	21"
CPSSP * (STD. SPEC. 9-05.20)	18"
SOLID WALL PVC (STD. SPEC. 9-05.12(1))	21"
PROFILE WALL PVC (STD. SPEC. 9-05.12(2))	21"

* CORRUGATED POLYETHYLENE STORM SEWER PIPE



Aug 23, 2023

GRATE INLET TYPE 2

STANDARD PLAN B-35.40-01

SHEET 1 OF 2 SHEETS

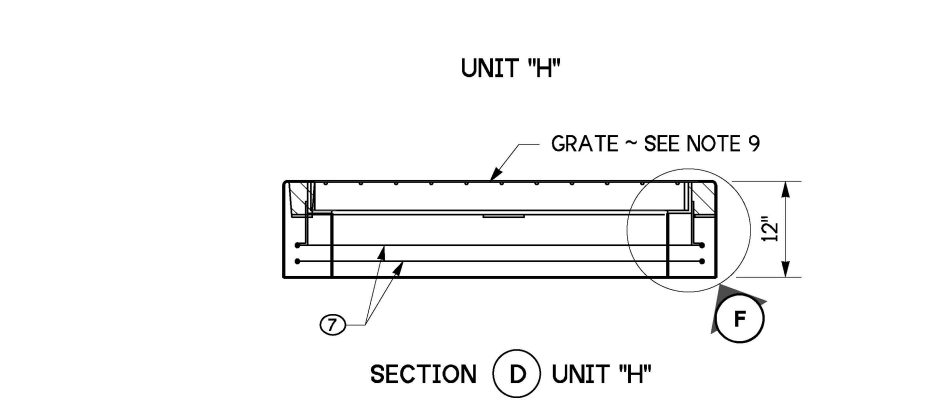
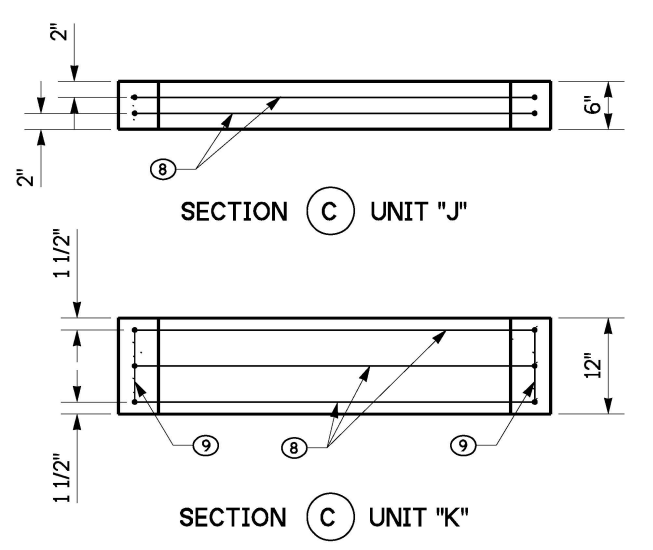
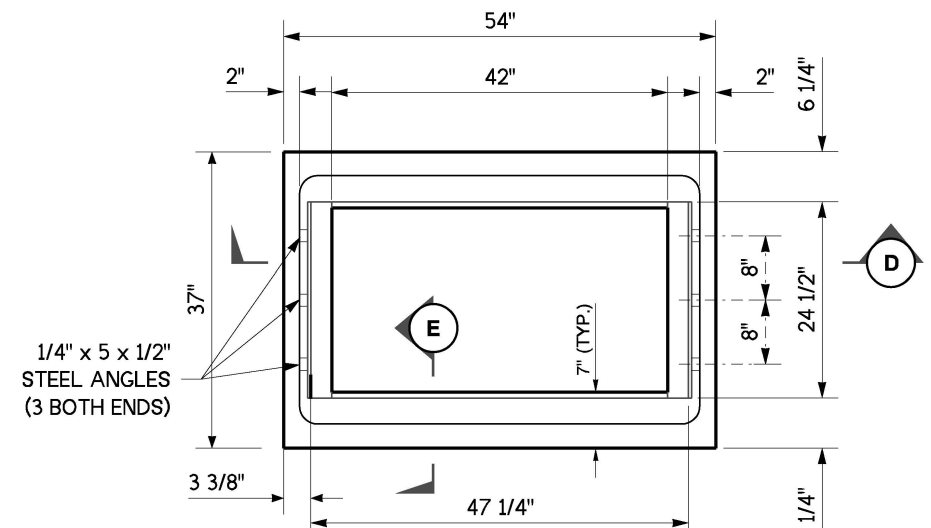
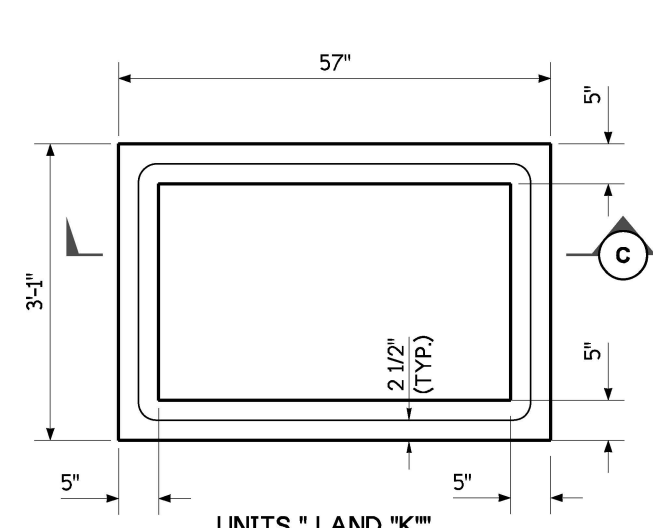
APPROVED FOR PUBLICATION

Mark A. Davis

Aug 23, 2023

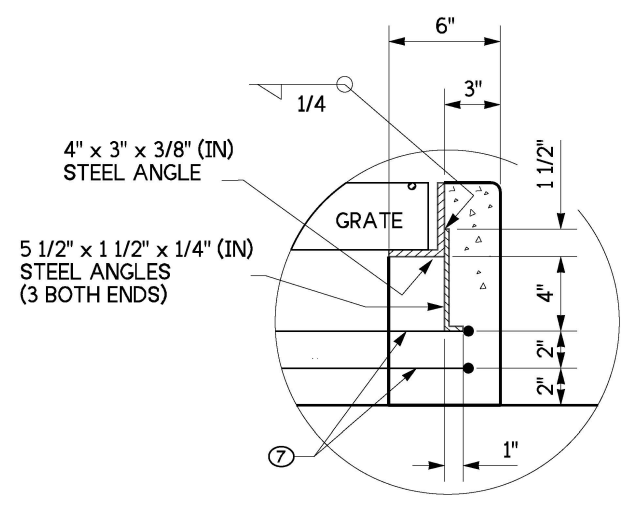
STATE DESIGN ENGINEER



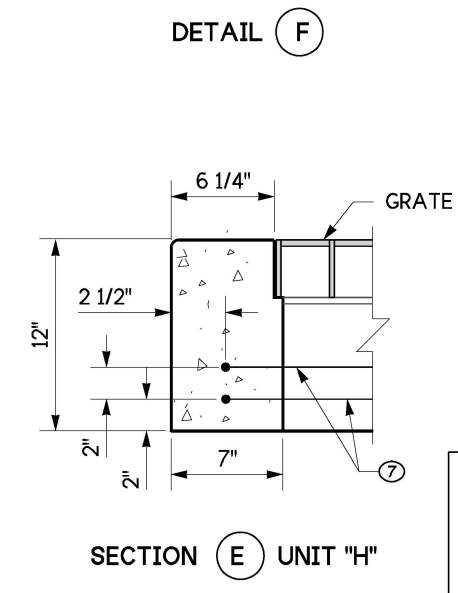


NOTES:

1. The Steel Angles shall be set so that each bearing bar of prefabricated grate shall have full bearing on both ends. The finished top of concrete shall be even with the grate surface.
2. Top of inlet grate shall be placed at ground level to present an unobstructed ditch or median section.
3. All exposed concrete edges shall be finished with a 1/2" (in) radius.
4. Pipes may enter through the knockouts on any side at any reasonable angle, provided the outside of the pipe can be contained between two opposite walls.
5. The flow line of the outlet pipe shall be 18" (in) minimum above the inside bottom of the inlet structure.
6. The grade line of the top inside of any inlet pipe shall enter no lower than the grade line of the top inside of the outlet pipe.
7. Unit "H" and optional extension units "J" and "K" shall be grouted in place to the satisfaction of the Engineer.
8. All pickup holes shall be grouted full after the basin has been placed.
9. See contract for type of grate specified. See Standard Plan B-40.20 and B-40.40 for grate details.
10. Knockouts shall have a wall thickness of 2" minimum, to 2.5" (in) maximum. Provide a 1.5" (in) minimum gap between the knockout wall and the outside of the pipe. After the pipe is installed, fill the gap with joint mortar in accordance with Standard Specification Section 9-04.3.
11. Pipe allowances will vary depending on pipe material used. See Region Hydraulic Engineer for assistance.



BAR LIST					BENDING DIAGRAM (ALL DIMENSIONS ARE OUT TO OUT)	
MARK		QTY.	SIZE	LENGTH		
①	BOTTOM SLAB AND SIDE WALL	3	3	5' - 9"	STRAIGHT	
②	BOTTOM SLAB AND SIDE WALL	2		12' - 5"		
③	BOTTOM SLAB AND SIDE WALL	2		7' - 2"		
④	BOTTOM SLAB AND SIDE WALL	2		2' - 9"		
⑤	WALL	4		9' - 1"	HOOP	
⑥	SIDE WALL	3		14' - 6"	HOOP	
⑦	UNIT H	2		14' - 2"	HOOP	
⑧	UNIT J	2		14' - 2"	HOOP	
⑧	UNIT K	3		14' - 2"	HOOP	
⑧	UNIT K	3		14' - 2"	HOOP	
⑨	UNIT K	4		0' - 9"	STRAIGHT	
⑩	SIDE WALL	8		2' - 8"	STRAIGHT	
⑪	BOTTOM SLAB AND SIDE WALL	4		7' - 5"		
⑫	BOTTOM SLAB AND SIDE WALL	3	6' - 0"			
⑬	SIDE WALL	4	14' - 6"	HOOP		



Aug 23, 2023

GRATE INLET TYPE 2

STANDARD PLAN B-35.40-01

SHEET 2 OF 2 SHEETS

APPROVED FOR PUBLICATION

Mark A. Poirier

Aug 23, 2023

