

SR 167 Master Plan

A planning and environmental linkage study

Equity Advisory Committee Meeting #3

June 10, 2022

JULIE MEREDITH, PE

HENRY YATES

APRIL DELCHAMPS, AICP

CHRIS BREILAND, PE

LOREANA MARCIANTE, PMP

LAURA LLOYD

AMY DANBERG

ASSISTANT SECRETARY URBAN MOBILITY, ACCESS AND MEGAPROGRAMS

SR 167 MASTER PLAN EQUITY ADVISORY COMMITTEE FACILITATOR

PLANNING MANAGER

SR 167 PROJECT MANAGER

SR 167 MASTER PLAN EQUITY ANALYSIS LEAD

SR 167 MASTER PLAN EQUITY AND ENVIRONMENTAL ANALYSIS

SR 167 MASTER PLAN PARTNER & COMMUNITY ENGAGEMENT

Equity Advisory Committee meeting #3: Agenda and Objectives

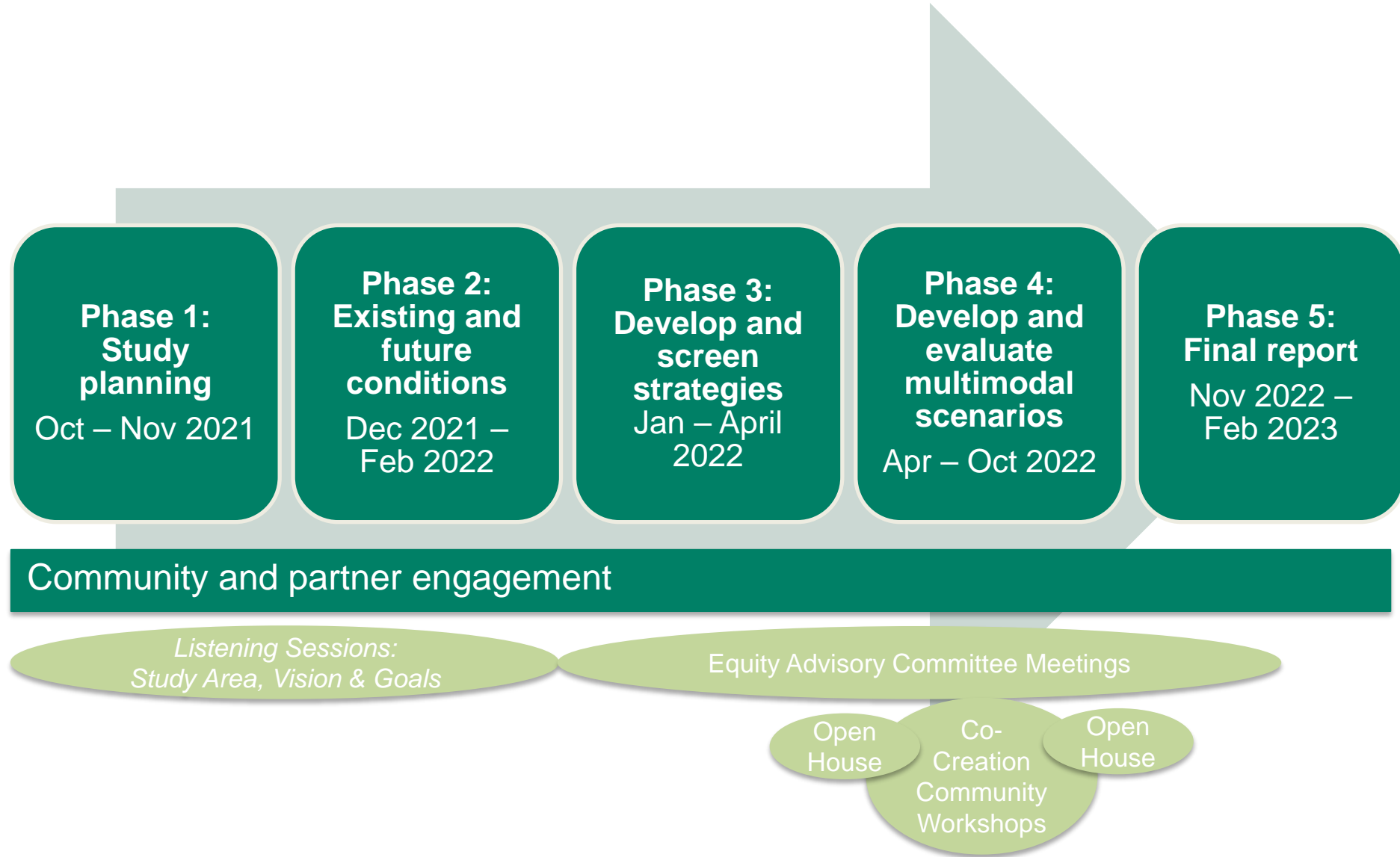
Agenda:

- Welcome and Introductions
- Follow-up on outstanding questions
- Equity analysis
 - Breakout sessions and report out
- Project list development
- Break
- Tell us your story
 - Breakout sessions and report out
- Co-creation workshops and feedback on approach
- Next Steps

Objectives:

- Report back from Meeting 2 questions
- Gather feedback on recommended equity priority areas (communities) for the SR 167 Master Plan scenario evaluation
- Gather feedback on equity focused co-creation workshops

SR 167 Master Plan Schedule



Questions and Follow-up from EAC meeting #2

For the detailed questions/comments and responses, please refer to the Q&A document shared with the Equity Advisory Committee 6/3

1. Language Translation and Native Hawaiian and Pacific Islander engagement
2. Question regarding tolling and people with low incomes
3. Question request more details on the Move Ahead Washington transportation funding
4. Question and comments related to people living with disabilities

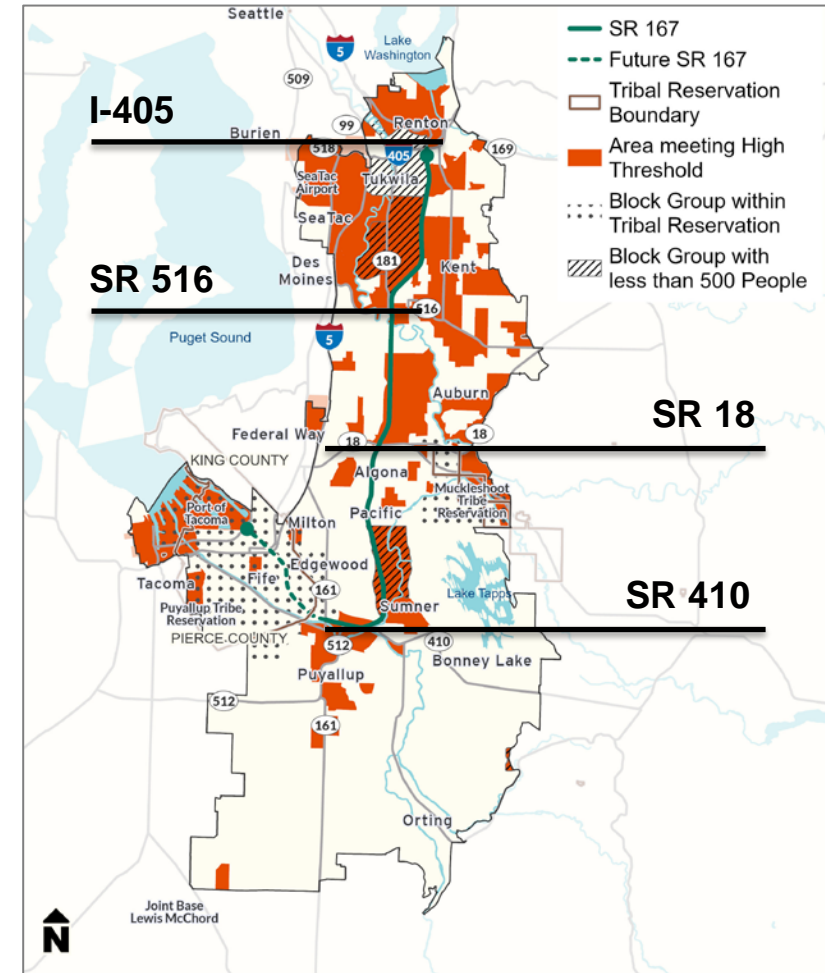
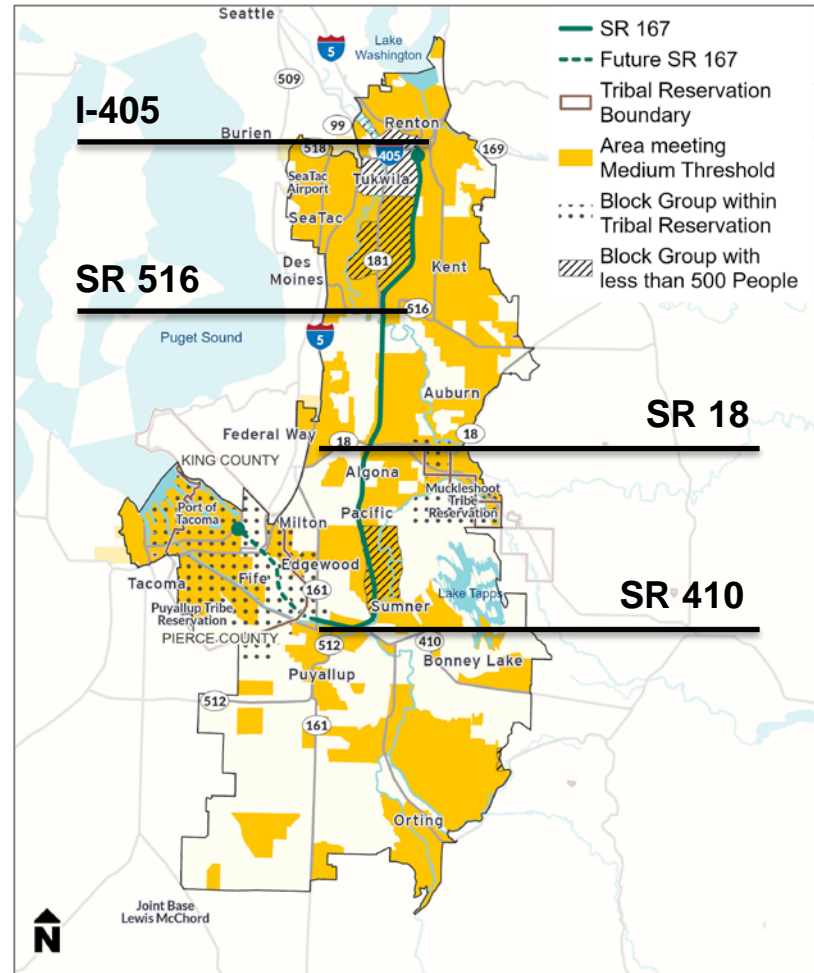
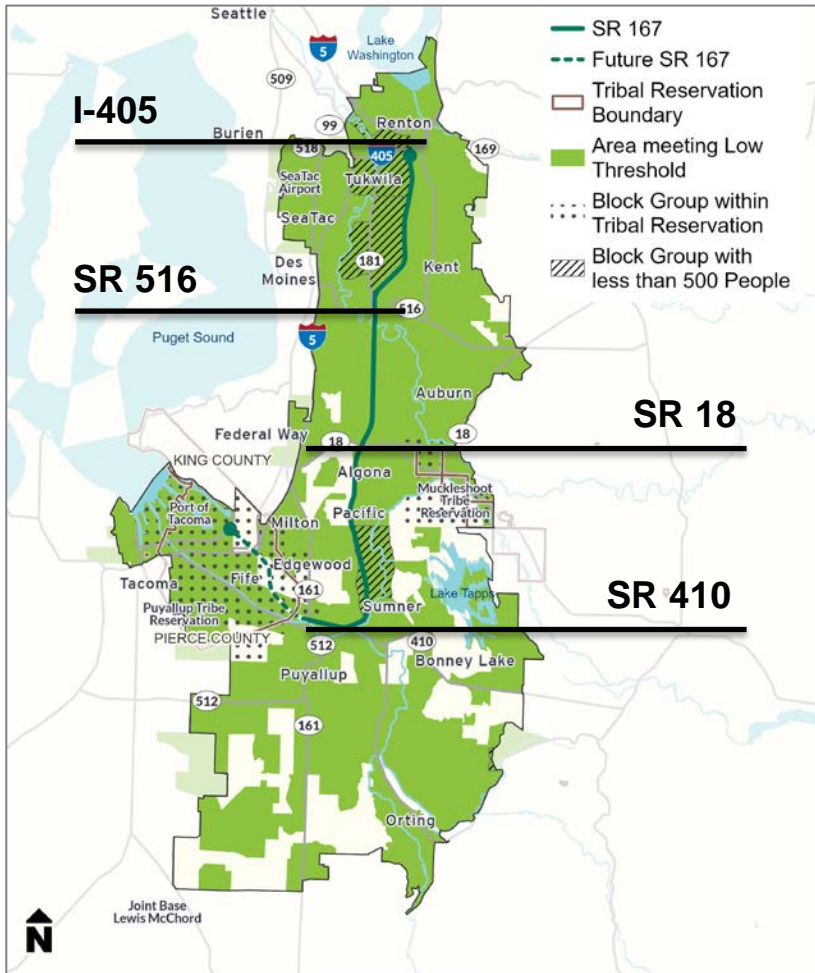
Equity Priority Areas Breakout Session

Equity Area Maps from EAC #2

Low Threshold Option

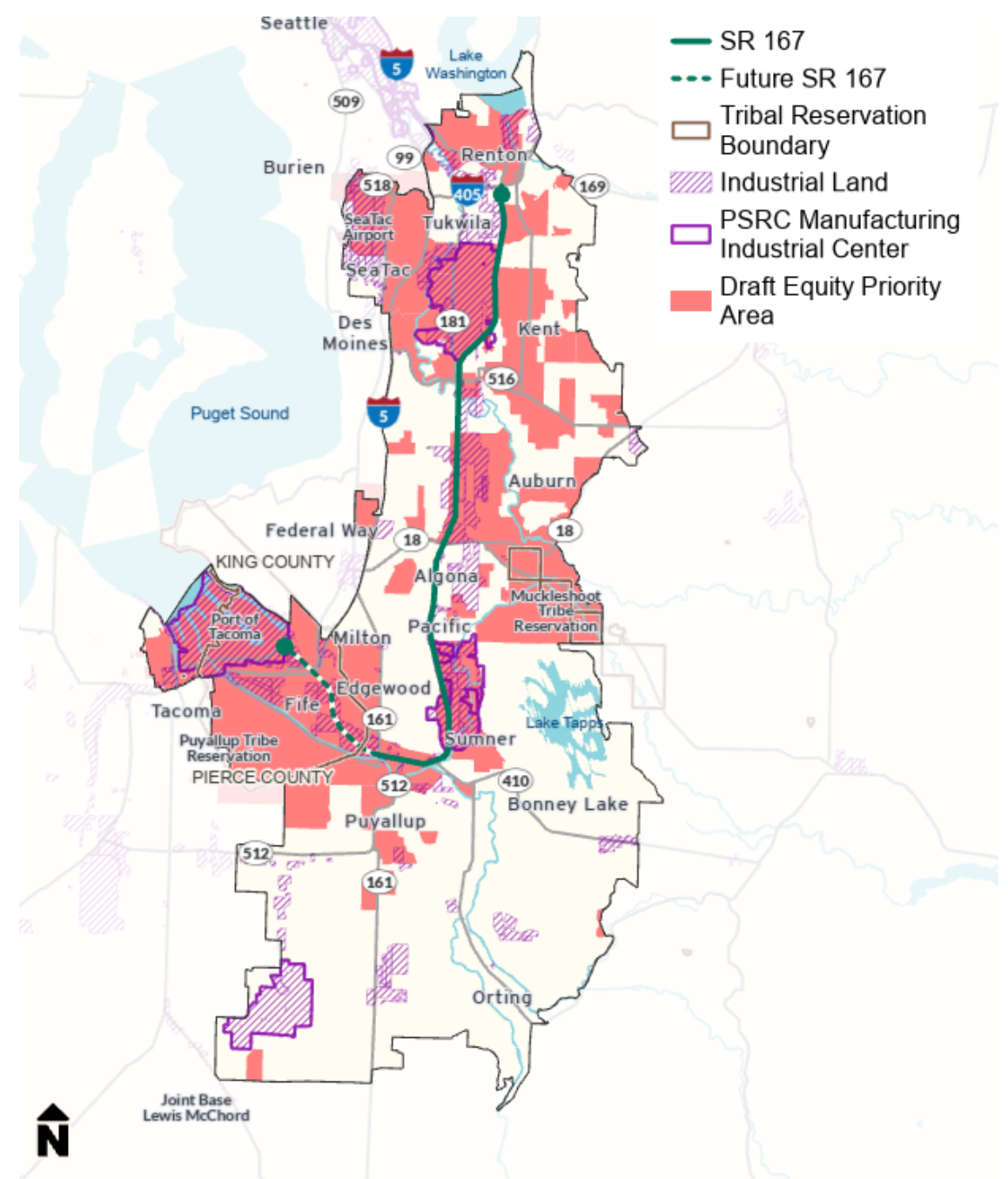
Medium Threshold Option

High Threshold Option



Equity Priority Areas Breakout Session

Identifying equity priority areas allows us to find transportation solutions (projects and strategies) that **maximize benefits** and **minimize impacts** to locations having the highest concentrations of vulnerable or overburdened populations

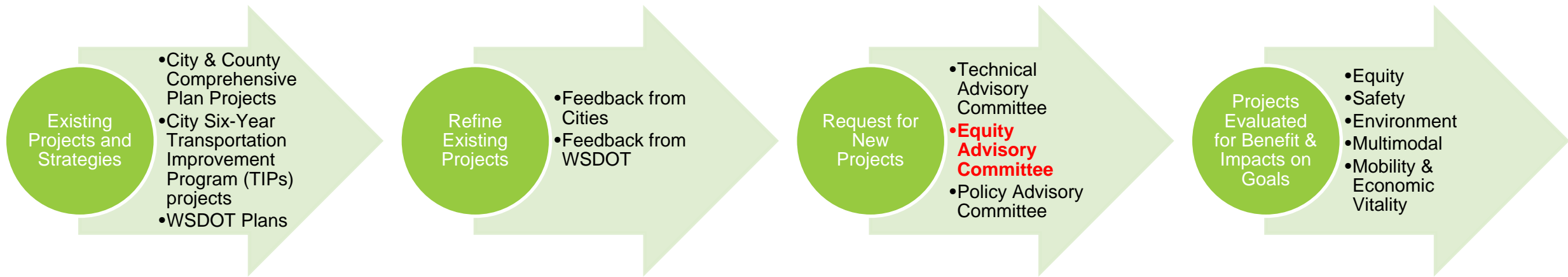


Report Out

- Any areas to add?
- Any areas that were questioned why they are a priority equity area?
- Other key themes?

Projects/Strategies

Project List Development Process



What we heard vs. potential projects

What we heard	Potential projects or strategies
More direct public transit routes with less commuting time	<ul style="list-style-type: none"> • New direct transit service between Seattle and SR 167 communities • Midday Sounder Service • 15 new or revised bus routes with more direct connections to transit hubs, neighborhood/regional retail centers, and employment
More east-west bus access and connections	<ul style="list-style-type: none"> • Three new frequent/RapidRide bus routes between East Hill neighborhoods and Sounder/Link stations • New on-demand transit connections (e.g. Via to transit) between transit hubs and other locations
Tolling is inequitable for a segment of the population	<ul style="list-style-type: none"> • Low-income toll reduction/mitigation program • More frequent, faster transit service
Sidewalks and bicycle routes are not complete around important destinations	<ul style="list-style-type: none"> • New sidewalks, crossings, and bicycle facilities near centers and transit hubs • Extensions of regional trails
Address the needs of people with disabilities	<ul style="list-style-type: none"> • Add audible pedestrian signals at major intersections and trails • Add/improve sidewalks and curb ramps

Request for projects/strategies that are important to communities/populations you serve

- Do you have any roadway, transit, bicycle, pedestrian or other projects that are important to communities/populations you serve?
- Is there a specific location or destination with a transportation challenge that needs a solution?

Available at your convenience to discuss and/or answer questions to help identify projects of importance!

Break

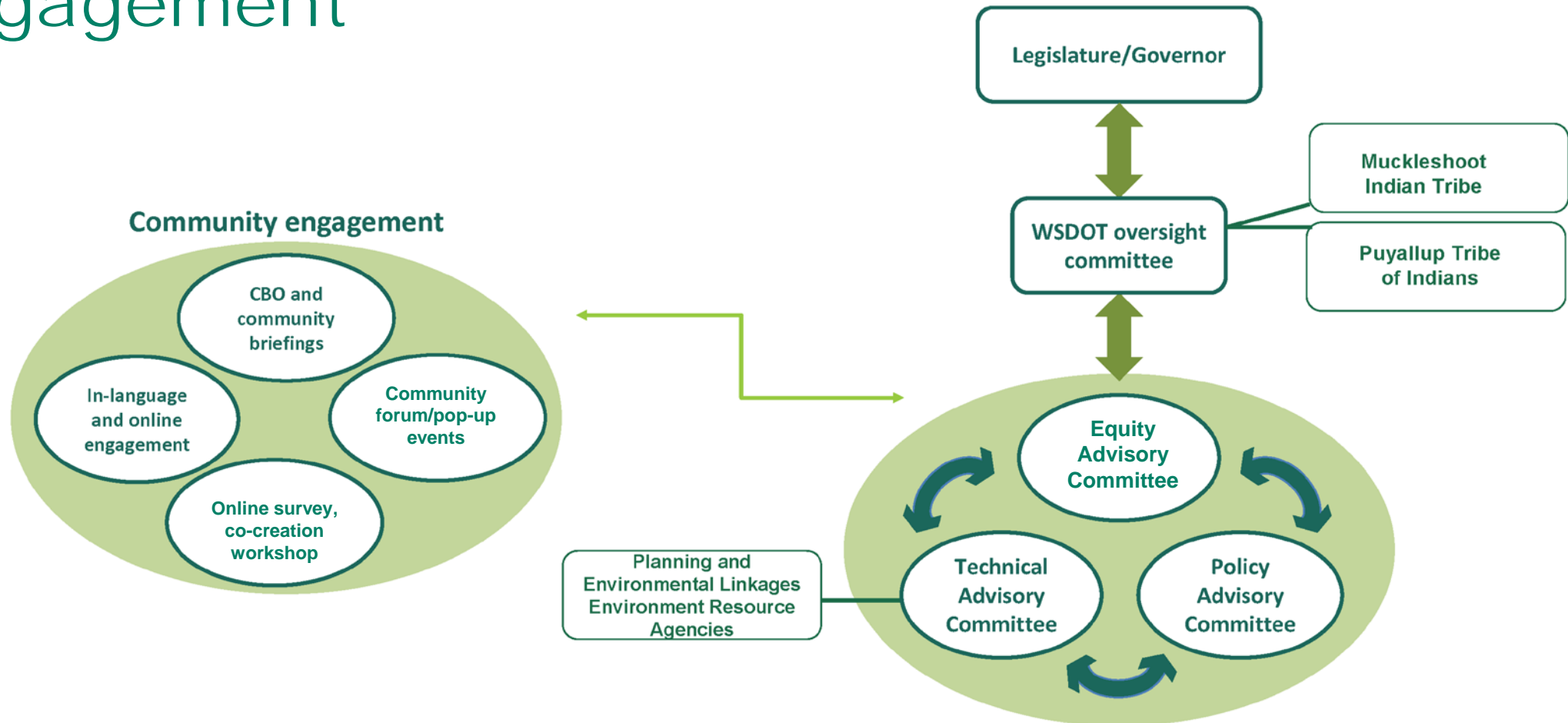
Breakout Groups

Report out

- Review transportation challenges
- What specific projects or solutions were discussed?

Community Engagement

SR 167 Master Plan - Partner and Community Engagement



Co-creation workshop approach

Objectives:

- Provide an opportunity for community members to tell us their story and for WSDOT to understand their transportation needs
- Provide an opportunity to work through potential ideas, solutions, and gather feedback

Recruitment and Compensation:

- We would like to partner with our CBO partners to gather 15-20 people per workshop.
- We will compensate workshop attendees for their time.
 - \$100 gift card
 - Orca/gas cards available to attendees

Logistics:

- 1.5 - 2-hour workshop
- In-language engagement at the workshops
- Food and child activity center

Agenda:

- SR 167 Master Plan Study overview
- Equity analysis small group work
- Tell us your story small group work
- Brainstorm solutions small group work

Co-creation workshop series: Proposed grouping

Proposed workshop series:

1. Native Hawaiian/Pacific Islander community members in the corridor (at-a-glance, possibly Federal Way, Kent, Auburn community members)
 - Location:
2. Workforce / Shift workers (this covers people commuting for workforce training/trade skills)
 - Location:
3. Puyallup Tribe of Indians and Muckleshoot Indian Tribe members (Auburn area and Tacoma/Fife/Puyallup area)
 - Location:
4. Communities in Equity Priority Areas in Northern Corridor (SeaTac, Tukwila, Renton, Kent, Auburn, Covington, Maple Valley)
 - Location:
5. Communities in Equity Priority Areas in Equity Central Corridor (Federal Way, Auburn, Algona, Pacific, Muckleshoot Indian Tribe)
 - Location:
6. Communities in Equity Priority Areas in Southern Corridor, Pierce County (Tacoma, Fife, Edgewood, Milton, Sumner, Bonney Lake, Puyallup, Orting, Puyallup Tribe of Indians)
 - Location:

Key questions

- What do you think about in-person versus virtual?
- Would you be willing to help recruit members?
- Would you be interested in a meeting to talk more about the workshops?

Translation Services

- Did our translation of the Equity Advisory Committee meeting #1 summary meet your standards or was there a need for improvement?
- Online open house advertisements and social media posts

Engagement over the next three months

Community engagement

- Launch online open house and survey – June 29
 - We will share the online open house website and translated social media posts with CBO's in the coming week
- Co-creation workshops (August)
- In-person events and requested briefings with CBO constituents (June - August)
- Summer fairs and festivals – share your ideas!

Partner engagement

- Technical Advisory Committee Meeting #4 (June 29)
- Policy Advisory Committee Meeting #4 (July 13)
- **Equity Advisory Committee Meeting #4 (September 23)**
- Ongoing briefings: meetings with CBO constituents, as requested by CBOs (June - August)

Engagements, so far, by the numbers

Over 70 organizations engaged to-date:

- **2** Equity Advisory Committee meeting
- **3** Technical Advisory Committee meetings
- **3** Policy Advisory Committee meetings
- **20** one-on-one listening sessions and partner briefings
- **1** business community meeting, including 5 chambers of commerce

Next Steps

Online Open House and Survey

- June 29 – July 29, 2022
 - Available in Chinese (simplified), Russian, Tagalog, Somali, Spanish, and Vietnamese
- Please help promote the online open house to community members if you have free time.
 - A \$50 Visa gift card will be provided if you share social media posts – English language or translated posts.

Co-creation workshops

- August
- Recruitment in July

Equity Advisory Committee Meeting #4

- Friday, September 23 (11:00 a.m. - 1:00 p.m.)
 - This is a proposed date and time.

April Delchamps, AICP
Planning Manager
(206) 305-9479
DelchaA@wsdot.wa.gov

Chris Breiland, PE
SR 167 Project Manager
(206) 576-4217
BreilaC@consultant.wsdot.wa.gov

Amy Danberg
SR 167 Master Plan Partner & Community Engagement Lead
(206) 962-9635
DanberA@consultant.wsdot.wa.gov

Henry Yates
Equity Advisory Committee Facilitator
Henry@yatescg.com

Questions?