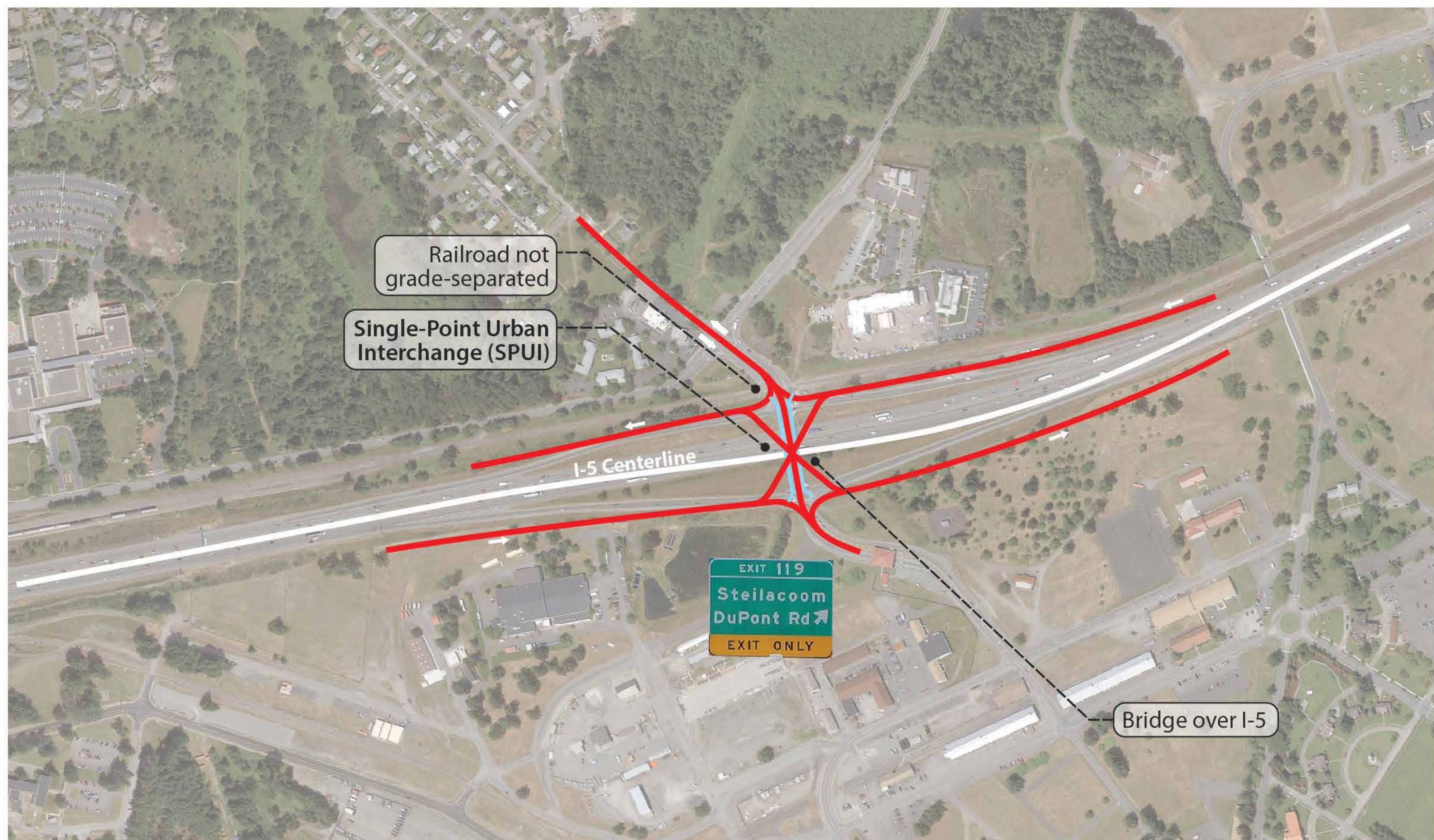


South End Study Area

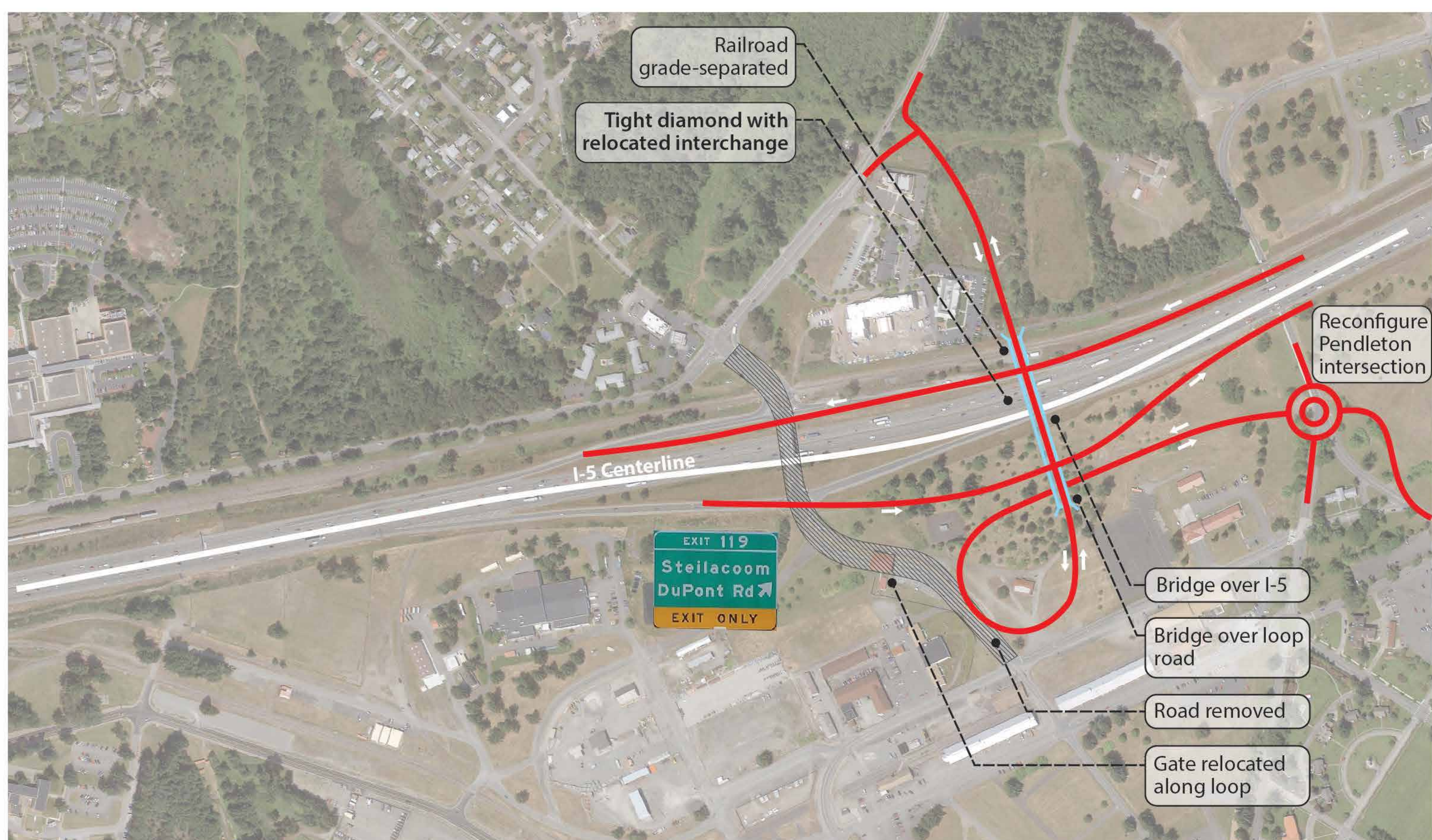
DUPONT-STEILACOOM ROAD INTERCHANGE CONCEPTS

I-5 JBLM VICINITY CONGESTION RELIEF PROJECT

Single-Point Urban Interchange

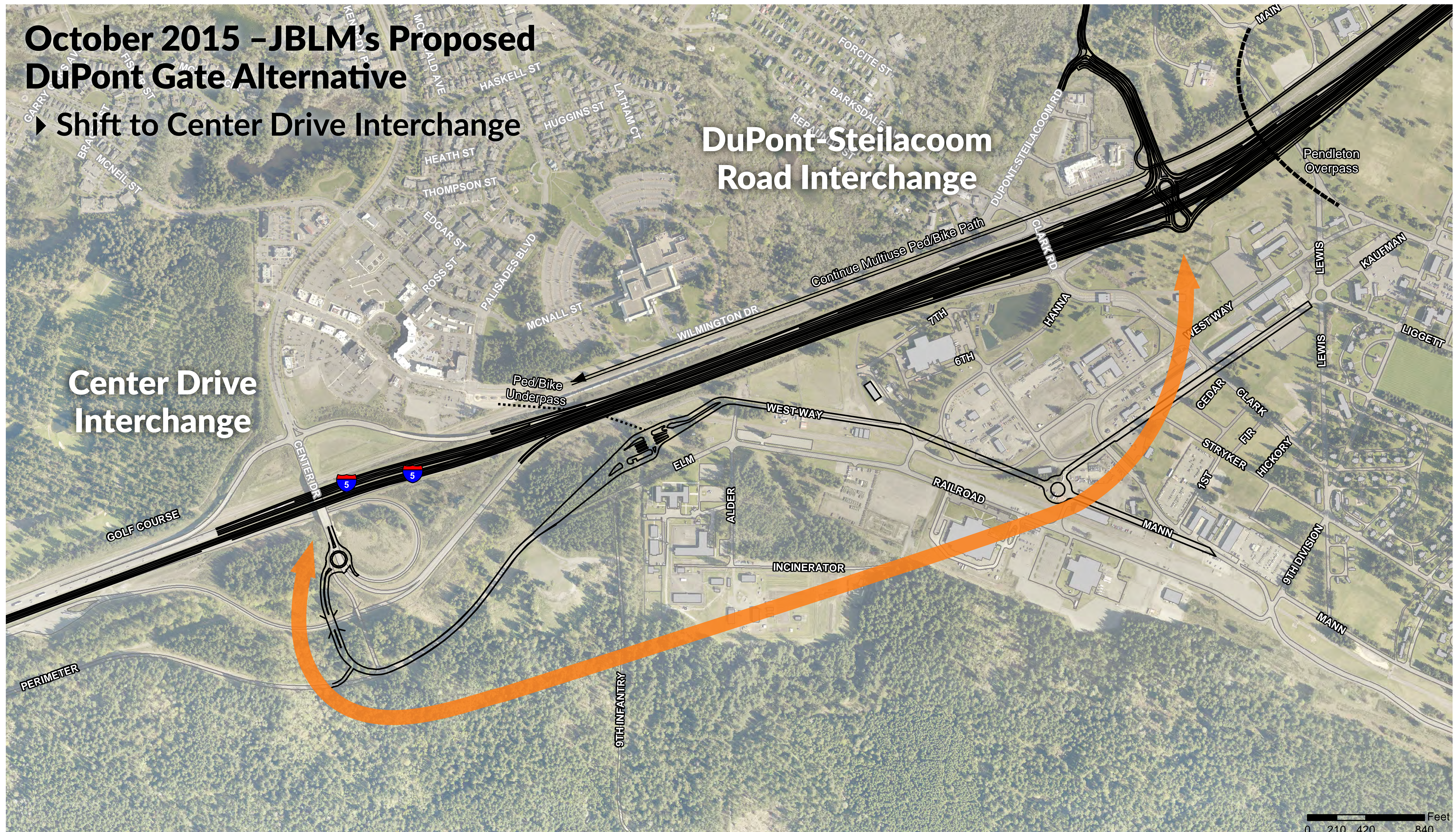


Offset Diamond



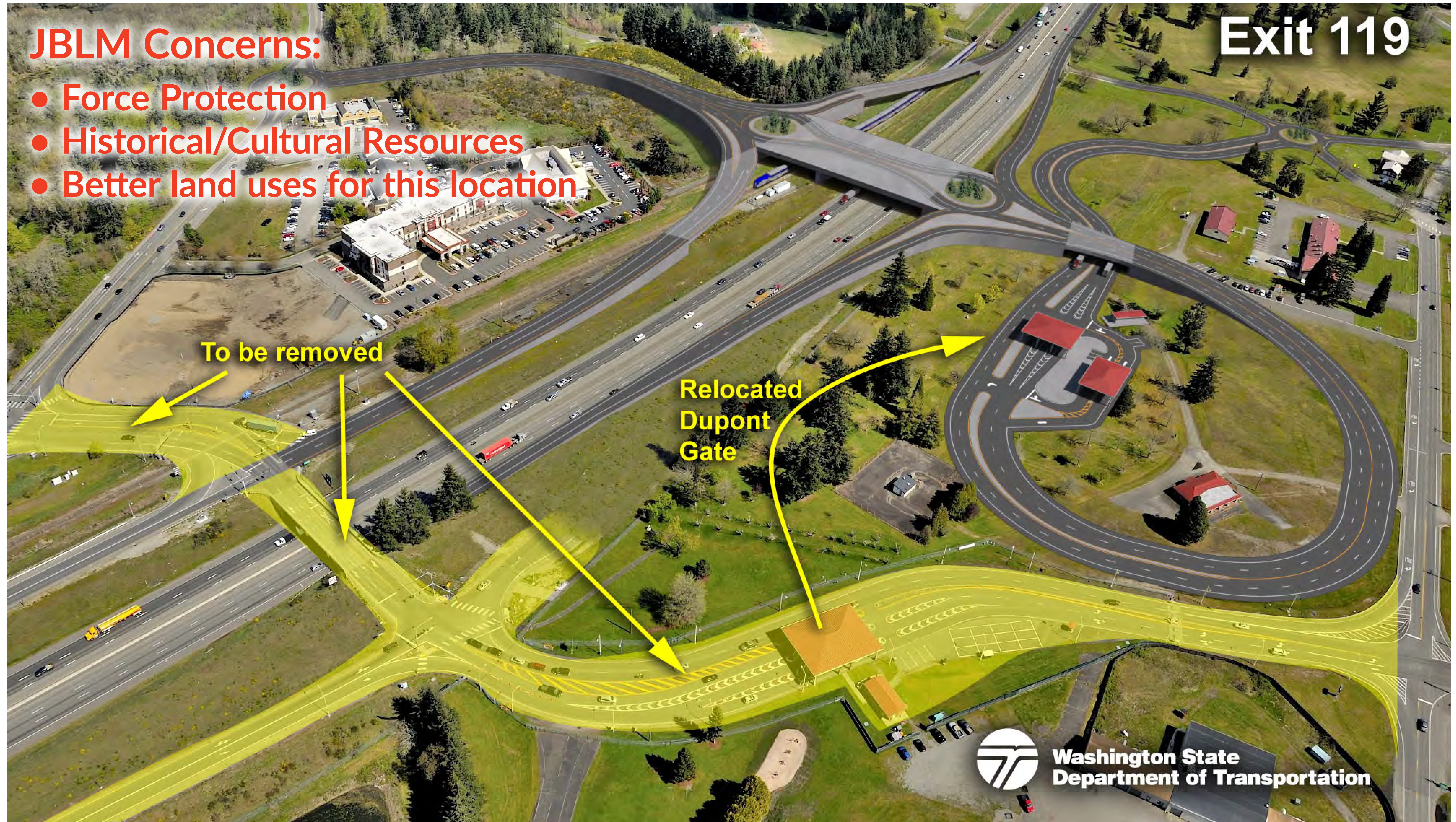
JBLM PROPOSED GATE SHIFT TO CENTER DRIVE

I-5 JBLM VICINITY CONGESTION RELIEF PROJECT



PREVIOUS DUPONT-STEILACOOM ROAD INTERCHANGE & GATE CONCEPT

I-5 JBLM VICINITY CONGESTION RELIEF PROJECT



SOUTH END STUDY AREA – WHAT COMES NEXT?

I-5 JBLM VICINITY CONGESTION RELIEF PROJECT

Step 1 – Currently Underway: Evaluate JBLM’s proposal to relocate DuPont Gate to Center Drive Exit

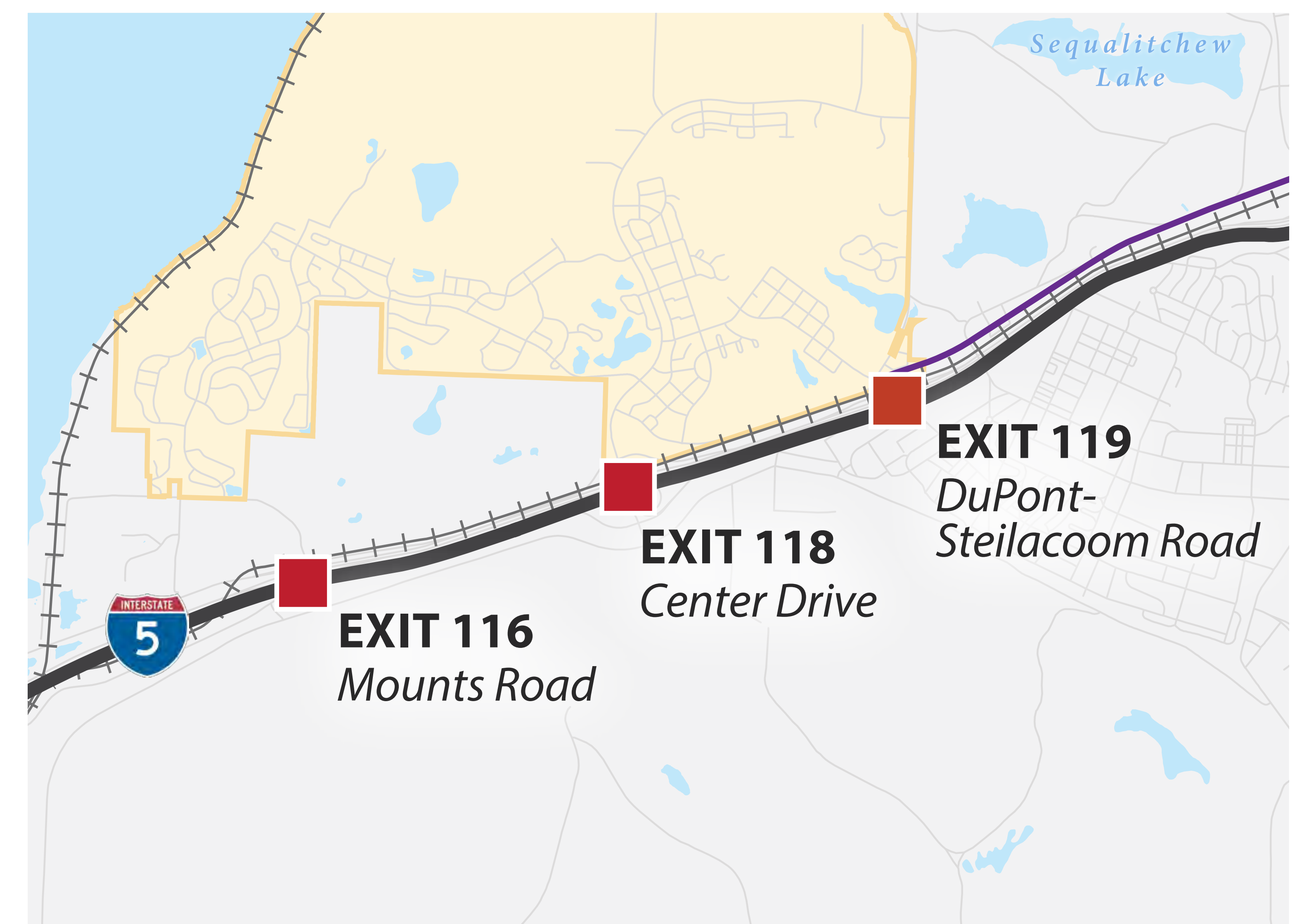
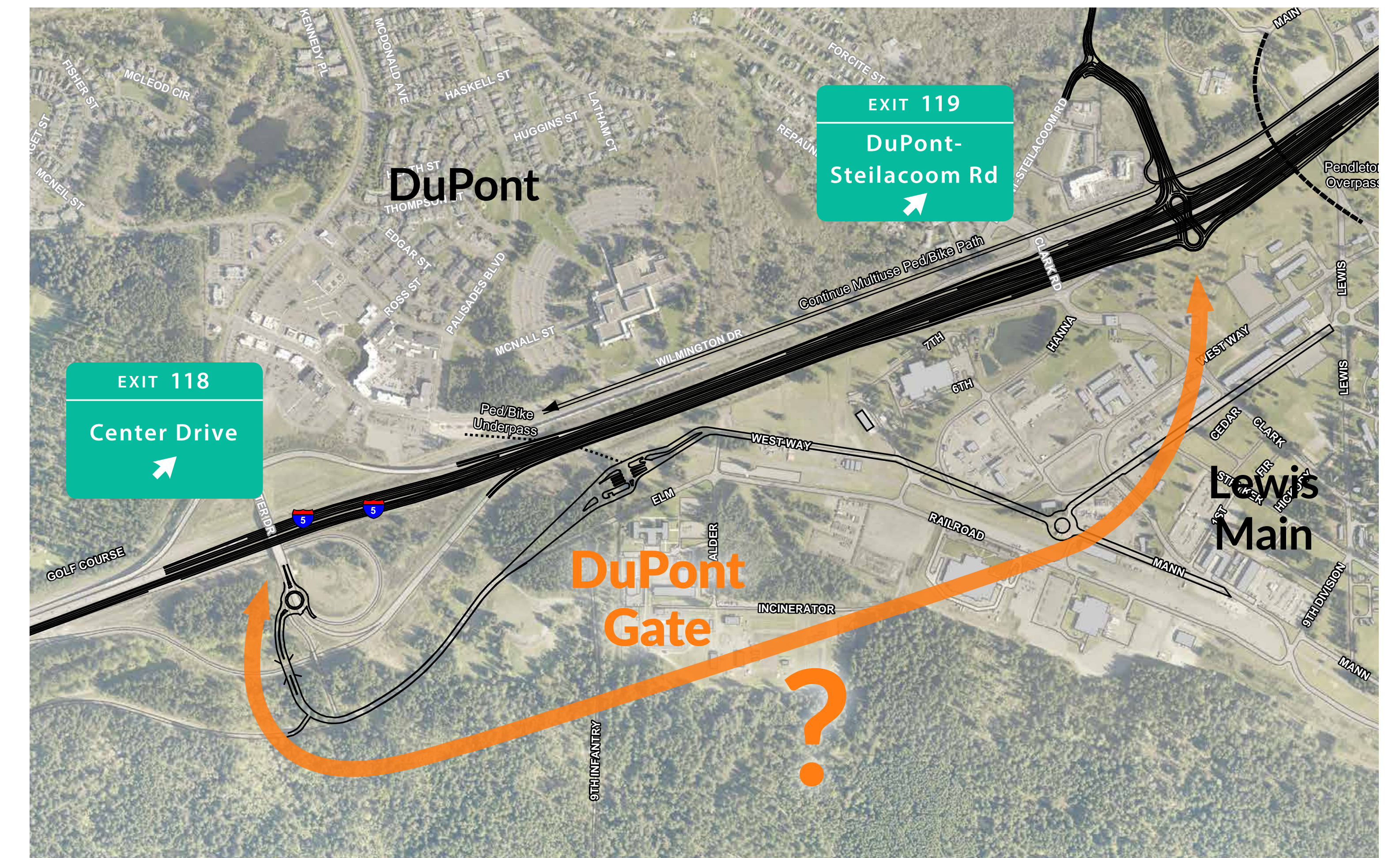
- a. Analyze how Center Drive exit would operate if DuPont Gate connected at this location
- b. Study how DuPont local roads would be affected if DuPont Gate connected to Center Drive exit

Step 2. Evaluate what improvements would be needed at the Center Drive, DuPont-Steilacoom, and possibly Mounts Road exits to accommodate traffic shifts associated with JBLM’s proposed DuPont Gate relocation

Step 3. Work with City of DuPont, Town of Steilacoom, and JBLM to define best option for improvements in South End of project (proposed Build Alternative)

Step 4. Complete NEPA (environmental) studies for proposed Build Alternative

Step 5. Complete Interchange Justification Report for revisions included in proposed Build Alternative



Moving Forward

MOVING FORWARD – NEXT STEPS

I-5 JBLM VICINITY CONGESTION RELIEF PROJECT

North End Project Area: Thorne Lane to DuPont-Steilacoom Road

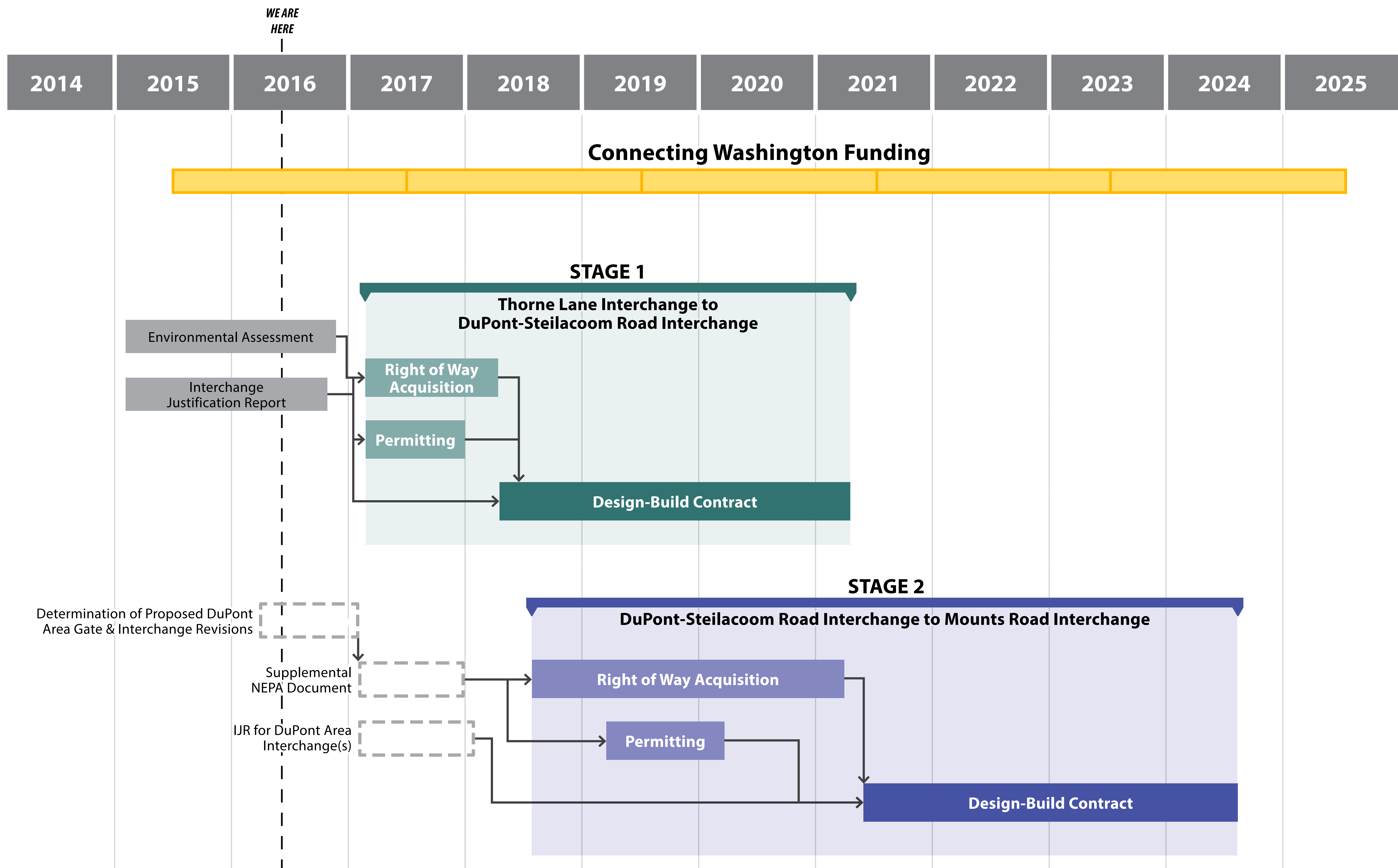
- .Environmental Analysis: Complete NEPA Documentation..... Summer 2016
- .Finalize Interchange Justification Report..... Summer 2016
- .Public Hearing Regarding Proposed Improvements Fall 2016
- .Right of Way (Property) Acquisition..... 2017
- .Permitting and Access Hearing 2017
- .Construction of North End Improvements 2018–2021

South Study Area: DuPont-Steilacoom Road to Mounts Road

- .Identify South End Improvement Options Fall 2016–Spring 2017
- .Supplemental Environmental Document for South End..... 2017
- .Interchange Justification Report for South End 2017
- .Right of Way Acquisition..... 2018–2019
- .Permitting and Access Hearing 2019
- .Construction of South End Improvements 2020–2024

SCHEDULE

I-5 JBLM VICINITY CONGESTION RELIEF PROJECT



--- Duration Undetermined

SOUTH END STUDY AREA – WHAT COMES NEXT?

I-5 JBLM VICINITY CONGESTION RELIEF PROJECT

Step 1 – Currently Underway: Evaluate JBLM’s proposal to relocate DuPont Gate to Center Drive Exit

- a. Analyze how Center Drive exit would operate if DuPont Gate connected at this location
- b. Study how DuPont local roads would be affected if DuPont Gate connected to Center Drive exit

Step 2. Evaluate what improvements would be needed at the Center Drive, DuPont-Steilacoom, and possibly Mounts Road exits to accommodate traffic shifts associated with JBLM’s proposed DuPont Gate relocation

Step 3. Work with City of DuPont, Town of Steilacoom, and JBLM to define best option for improvements in South End of project (proposed Build Alternative)

Step 4. Complete NEPA (environmental) studies for proposed Build Alternative

Step 5. Complete Interchange Justification Report for revisions included in proposed Build Alternative

