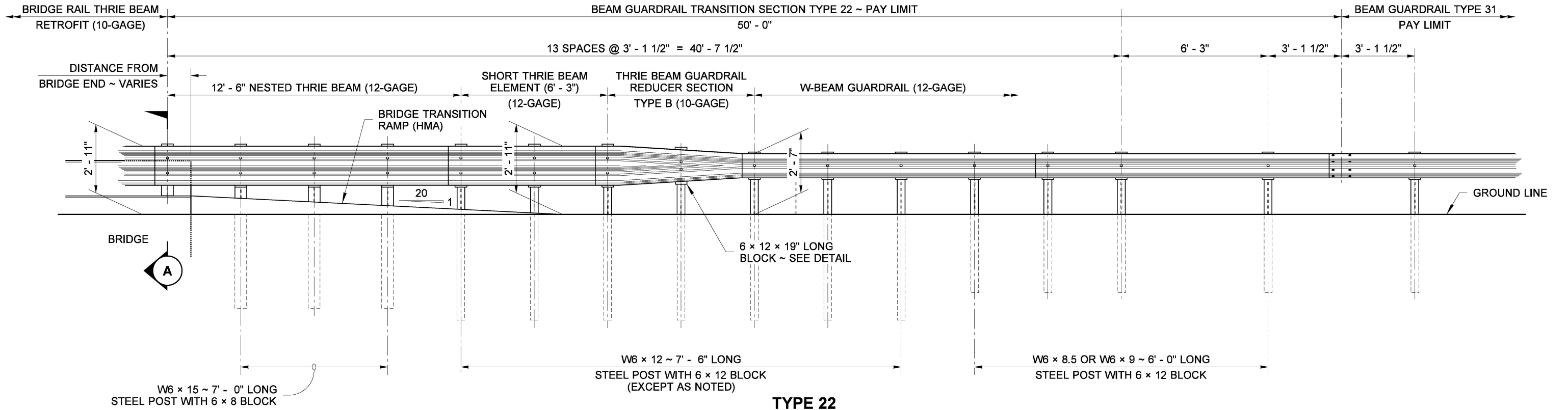


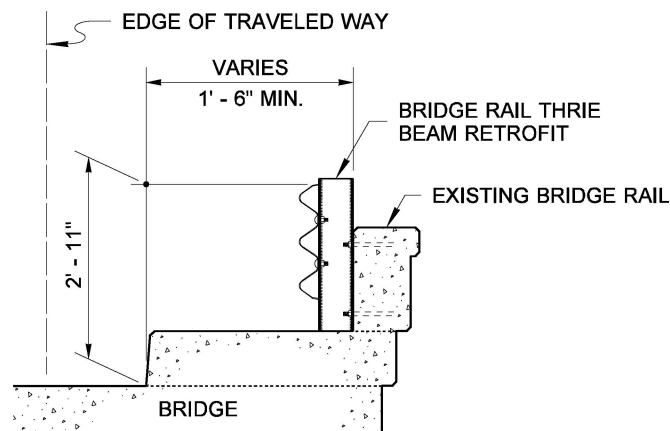
NOTES

1. See **Standard Plans C-1b, C-1d, C-20.10, and C-25.20** for rail elements and thrie beam block details.
2. When a transition is required on the trailing end of the bridge, use a mirror image of this plan.
3. See **Standard Plans A-50.10, or A-50.40** for beam guardrail transition grading details at bridge ends.
4. Spacing may vary depending on application. See **Standard Specification Section 9-16.3(1)** for rail element requirements.

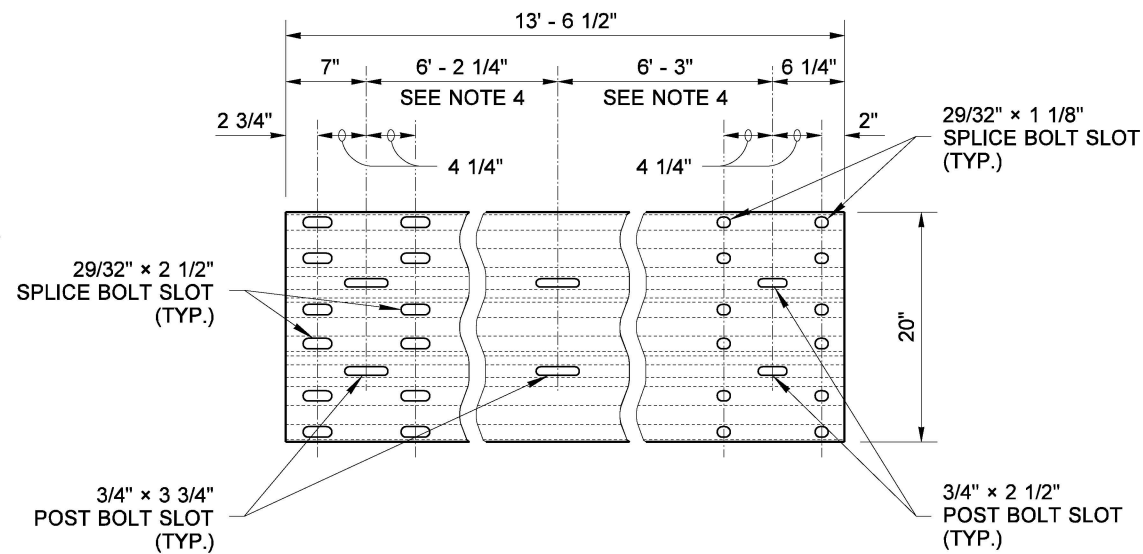


TYPE 22

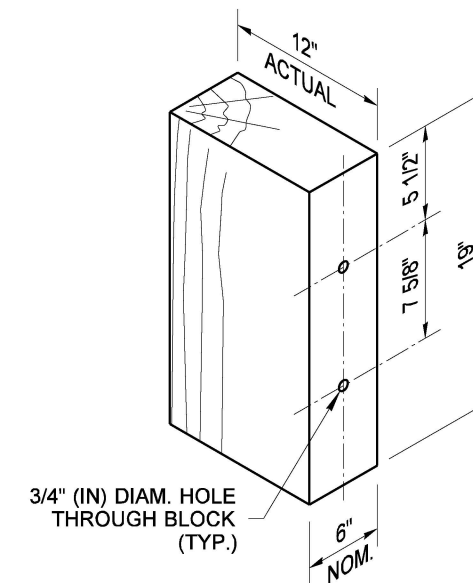
APPROACH END (SHOWN - SEE NOTE 2)
THRIE BEAM INSTALLED AT FACE OF BRIDGE RAIL



SECTION A



THRIE BEAM EXPANSION SECTION



THRIE BEAM REDUCER WOOD BLOCK



Aug 17, 2021

**BEAM GUARDRAIL (TYPE 31)
TRANSITION SECTION
TYPE 22
STANDARD PLAN C-25.22-06**

SHEET 1 OF 1 SHEET

APPROVED FOR PUBLICATION

[Signature]

Aug 20, 2021

STATE DESIGN ENGINEER



Washington State Department of Transportation