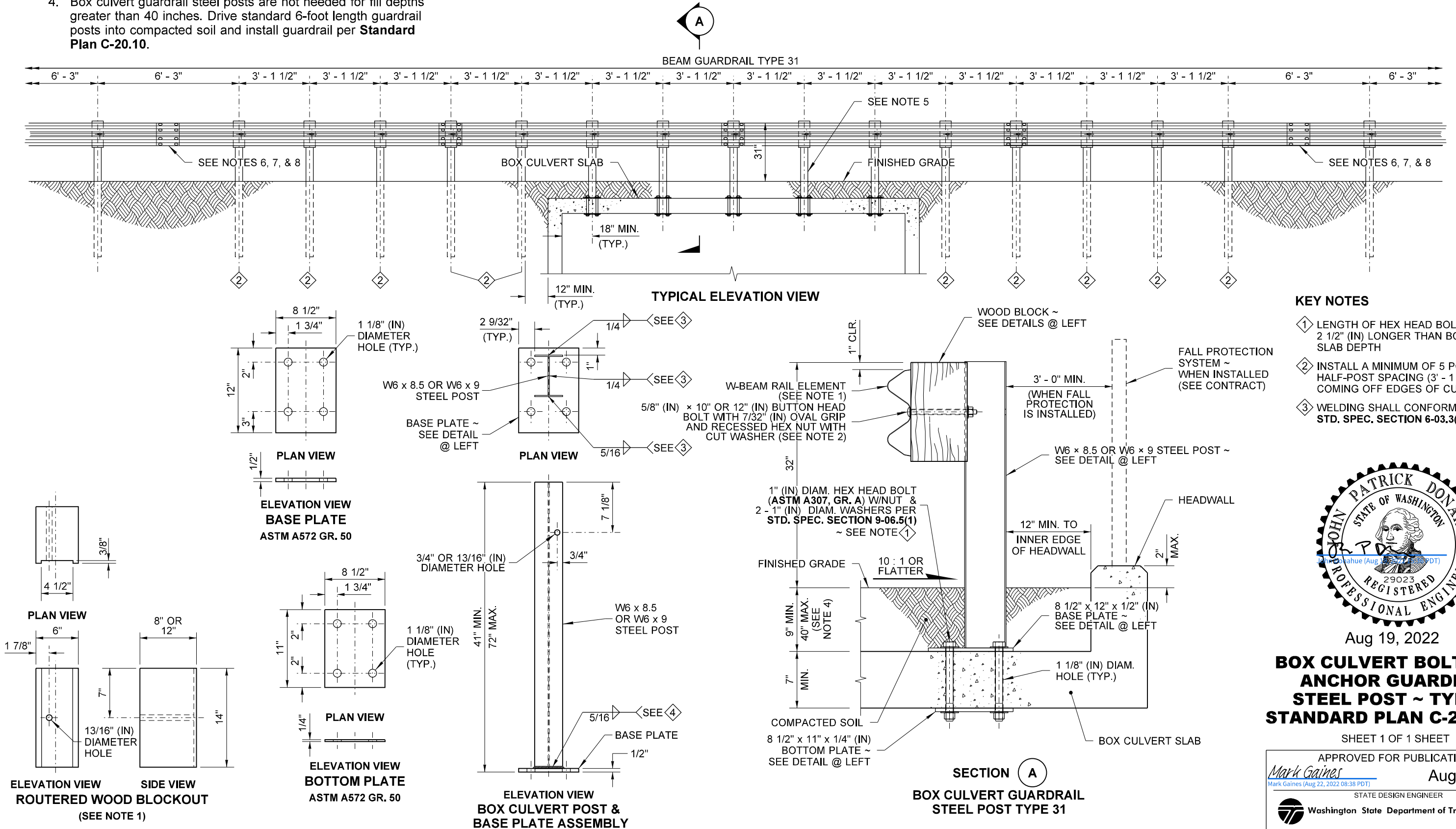


NOTES

- For typical rail element and post details not shown on this plan, refer to **Standard Plans C-20.10** and **C-1b**.
- Wood blocks are shown. Blocks of an approved alternative may be used. See **Standard Specification, Section 9-16.3(2)**.
- Attach blockouts to steel posts using bolt holes on approaching traffic side of post web.
- Box culvert guardrail steel posts are not needed for fill depths greater than 40 inches. Drive standard 6-foot length guardrail posts into compacted soil and install guardrail per **Standard Plan C-20.10**.
- Plan shows 5 box culvert guardrail posts installed on culvert lid. It is acceptable to use a greater or lesser number of box culvert guardrail posts to increase or decrease length of system as needed.
- Install at least 50 - feet of Type 31 guardrail upstream and downstream from 1/2 post spacing guardrail (Terminals and Anchors included in length).
- Install at least 12.5 - feet of Type 31 guardrail from end of 1/2 spacing guardrail before installing Terminal or Anchor.
- Install at least 25 - feet of Type 31 Guardrail from end of 1/2 post spacing guardrail before starting a Taper or Radius Rail Guardrail system.



Aug 19, 2022

BOX CULVERT BOLT-THRU ANCHOR GUARDRAIL STEEL POST ~ TYPE 31 STANDARD PLAN C-20.43-00

SHEET 1 OF 1 SHEET

APPROVED FOR PUBLICATION

Mark Gaines
Mark Gaines (Aug 22, 2022 08:38 PDT) Aug 22, 2022

STATE DESIGN ENGINEER

Washington State Department of Transportation