

**COMPENDIUM OF BACKGROUND
SOUND LEVELS FOR FERRY
TERMINALS IN PUGET SOUND**



*Prepared by:
Jim Laughlin
Washington State Department of Transportation
Office of Air Quality and Noise
15700 Dayton Avenue North, P.O. Box 330310
Seattle, WA 98133-9710*

May 2015

Table of Contents

List of Tables	i
List of Figures.....	i
<i>Executive Summary</i>	1
<i>Introduction</i>	4
<i>Underwater Sound Levels</i>	5
Characteristics of Underwater Sound.....	5
<i>Methodology</i>	6
<i>Results</i>	8
Port Townsend Ferry Terminal.....	8
Anacortes Ferry Terminal.....	13
Edmonds Ferry Terminal.....	17
Seattle Ferry Terminal	21
Mukilteo Ferry Terminal	26
Kingston Ferry Terminal	34
Vashon Ferry Terminal.....	38
Southworth Ferry Terminal.....	42
Coupeville (Keystone) Ferry Terminal	47
Background Sound Levels vs. Number of Ferry Vessels.....	51
<i>Conclusions</i>	55
<i>References</i>	56

List of Tables

Table 1: Underwater Background Monitoring Results, 3, 24-hour Periods.	2
Table 2: Underwater Background Monitoring Results, Daytime Only.	3
Table 3: Background Sound Level Results, Port Townsend Ferry Terminal.....	10
Table 4: Background Sound Level Results, Anacortes Ferry Terminal.....	15
Table 5: Background Sound Level Results, Edmonds Ferry Terminal.....	19
Table 6: Background Sound Level Results, Seattle Ferry Terminal.....	23
Table 7: Background Sound Level Results, Mukilteo Ferry Terminal.....	28
Table 8: Background Sound Level Results, Mukilteo Ferry Terminal.....	31
Table 9: Background Sound Level Results, Kingston Ferry Terminal.	36
Table 10: Background Sound Level Results, Vashon Ferry Terminal.....	40
Table 11: Background Sound Level Results, Southworth Ferry Terminal.	44
Table 12: Background Sound Level Results, Coupeville Ferry Terminal.....	49
Table 13. Underwater Background Monitoring Results, 3, 24-hour Periods.....	53
Table 14: Underwater Background Monitoring Results, Daytime Only.	54

List of Figures

Figure 1: Location of the Autonomous Multichannel Acoustic Recorder (AMAR) deployment at Port Townsend.....	8
---	---

Figure 2: Probability Density Function (PDF) for the 1 Hz to 20 KHz analysis on a daily (24-hr) basis for Port Townsend (Dahl et al., 2010).	9
Figure 3: Cumulative Distribution Function (CDF) for the 1 Hz to 20 kHz analysis for all three days at Port Townsend.	10
Figure 4: 1/3 rd octave analysis of the broadband 20 Hz to 20 kHz frequencies for the 72-hour period near the Port Townsend ferry terminal.	11
Figure 5: Average hourly background sound levels measured for a 72-hour period near the Port Townsend Ferry terminal including frequencies between 1 Hz and 20 kHz.	12
Figure 6: Location of the Autonomous Multichannel Acoustic Recorder (AMAR) deployment at Anacortes.	13
Figure 7: Probability Density Function (PDF) for the 1 Hz to 20 kHz analysis on a daily (24-hr) basis.	14
Figure 8: Cumulative Distribution Function (CDF) for the 1 Hz to 20 kHz analysis for all three days at Anacortes.	14
Figure 9: 1/3 rd octave analysis of the broadband 1 Hz to 20 kHz frequencies for the 72-hour period near the Anacortes ferry terminal.	15
Figure 10: Average hourly background sound levels measured for a 72-hour period near the Anacortes Ferry terminal including frequencies between 1 Hz and 20 kHz.	16
Figure 11: Location of the Autonomous Multichannel Acoustic Recorder (AMAR) deployment at Edmonds.	17
Figure 12: Probability Density Function (PDF) for the 1 Hz to 20 kHz analysis on a daily (24-hr) basis near Edmonds.	18
Figure 13: Cumulative Density Function (CDF) for the 1 Hz to 20 kHz analysis for all three days near Edmonds.	18
Figure 14: 1/3 rd octave analysis of the broadband 20 Hz to 20 kHz frequencies for the 72-hour period near Edmonds.	19
Figure 15: Average hourly background sound levels measured for a 72-hour period near the Edmonds Ferry terminal including frequencies between 1 Hz and 20 kHz.	20
Figure 16: Location of the Autonomous Multichannel Acoustic Recorder (AMAR) deployment at Colman Dock in Seattle.	21
Figure 17: Probability Density Function (PDF) for the 1 Hz to 20 kHz analysis on a daily (24-hr) basis for the Seattle Ferry Terminal.	22
Figure 18: Cumulative Density Function (CDF) for the 1 Hz to 20 KHz analysis for all three days near Seattle.	23
Figure 19: 1/3 rd octave analysis of the broadband 20 Hz to 20 kHz frequencies for the 72-hour period near Seattle.	24
Figure 20: Average hourly background sound levels measured for a 72-hour period near the Seattle Ferry terminal including frequencies between 1 Hz and 20 kHz.	25
Figure 21: Location of the Autonomous Multichannel Acoustic Recorder (AMAR) deployment at Mukilteo.	26
Figure 22: Probability Density Function (PDF) for the 1 Hz to 20 kHz analysis on a daily (24-hr) basis near Mukilteo.	27
Figure 23: Cumulative Density Function (CDF) for the 1 Hz to 20 kHz analysis for all three days near Mukilteo.	27
Figure 24: 1/3 rd octave analysis of the broadband 20 Hz to 20 kHz frequencies for the 72-hour period near Mukilteo.	28
Figure 25: Average hourly background sound levels measured for a 72-hour period near the Mukilteo Ferry terminal including frequencies between 1 Hz and 20 kHz.	29
Figure 26: Probability Density Function (PDF) for the 1 Hz to 20 kHz analysis on a daily (24-hr) basis near Mukilteo (2015).	30
Figure 27: Cumulative Density Function (CDF) for the 1 Hz to 20 kHz analysis for all three days near Mukilteo (2015).	31
Figure 28: 1/3 rd octave analysis of the broadband 20 Hz to 20 kHz frequencies for the 72-hour period near Mukilteo (2015).	32
Figure 29: Average RMS sound levels for Klikitat vs. Tokitae vessel during each arrival at Mukilteo (2015) during a 21 hour period.	33
Figure 30: 1/3 rd Octave analysis showing the frequency content of the two vessels during their approach at Mukilteo (2015) during a 21 hour period.	33
Figure 31: Location of the Autonomous Multichannel Acoustic Recorder (AMAR) deployment at Kingston.	34
Figure 32: Probability Density Function (PDF) for the 1 Hz to 20 kHz analysis on a daily (24-hr) basis near Kingston.	35

Figure 33: Cumulative Density Function (CDF) for the 1 Hz to 20 kHz analysis for all three days near Kingston.....	35
Figure 34: 1/3 rd octave analysis of the broadband 1 Hz to 5 kHz frequencies for the 72-hour period near Kingston.....	36
Figure 35: Average hourly background sound levels measured for a 72-hour period near the Kingston Ferry terminal including frequencies between 1 Hz and 20 kHz.....	37
Figure 36: Location of the Autonomous Multichannel Acoustic Recorder (AMAR) deployment at Vashon Island.....	38
Figure 37: Probability Density Function (PDF) for the 1 Hz to 20 kHz analysis on a daily (24-hr) basis near Vashon.....	39
Figure 38: Cumulative Density Function (CDF) for the 1 Hz to 20 kHz analysis for all three days near Vashon Island.....	39
Figure 39: 1/3 rd octave analysis of the broadband 1 Hz to 20 kHz frequencies for the 72-hour period near Vashon.....	40
Figure 40: Average hourly background sound levels measured for a 72-hour period near the Vashon Ferry terminal including frequencies between 1 Hz and 20 kHz.....	41
Figure 41: Location of the Autonomous Multichannel Acoustic Recorder (AMAR) deployment at Southworth.....	42
Figure 42: Probability Density Function (PDF) for the 1 Hz to 20 kHz analysis on a daily (24-hr) basis near Southworth.....	43
Figure 43: Cumulative Density Function (CDF) for the 1 Hz to 20 kHz analysis for all three days near Southworth.....	44
Figure 44: 1/3 rd octave analysis of the broadband 1 Hz to 5 kHz frequencies for the 72-hour period near Southworth.....	45
Figure 45: Average hourly background sound levels measured for a 72-hour period near the Southworth Ferry terminal including frequencies between 1 Hz and 20 kHz.....	46
Figure 46: Location of the Autonomous Multichannel Acoustic Recorder (AMAR) deployment at Coupeville.....	47
Figure 47: Probability Density Function (PDF) for the 1 Hz to 20 kHz analysis on a daily (24-hr) basis near Coupeville.....	48
Figure 48: Cumulative Density Function (CDF) for the 1 Hz to 20 kHz analysis for all three days near Coupeville.....	49
Figure 49: 1/3 rd octave analysis of the broadband 1 Hz to 5 kHz frequencies for the 72-hour period near Coupeville.....	50
Figure 50: Average hourly background sound levels measured for a 72-hour period near the Coupeville Ferry terminal including frequencies between 1 Hz and 20 kHz.....	51
Figure 51: Background sound levels by functional hearing group and number of ferry vessels per day for a 72-hour period for all terminals.....	52

EXECUTIVE SUMMARY

This technical report describes the data collected near various Washington State Ferry Terminals to determine typical underwater background sound levels. An Autonomous Multichannel Acoustic Recording device (AMAR) was deployed for up to 10 days at various locations at a distance of approximately ½ mile from the ferry terminal and away from the path of the ferry route. Three consecutive 24-hour periods of continuous recording was analyzed to determine the background sound level (Table 1). In addition a separate analysis was conducted using only the daytime background sound levels over those three days (Table 2).

Table 1: Underwater Background Monitoring Results, 3, 24-hour Periods.

Frequency Range	Functional Hearing Group	Port									
		Townsend 50% CDF ¹ (dB)	Anacortes 50% CDF ² (dB)	Edmonds 50% CDF ³ (dB)	Seattle 50% CDF ⁴ (dB)	Mukilteo 50% CDF ⁵ (dB)	Mukilteo 50% CDF ¹⁰ (dB)	Kingston 50% CDF ⁵ (dB)	Vashon 50% CDF ⁷ (dB)	Southworth 50% CDF ⁸ (dB)	Coupeville 50% CDF ⁹ (dB)
7 Hz to 20 kHz	Low Frequency Cetaceans	106	129	122	127	122	123	124	126	121	122
75 Hz to 20 kHz	Phocid Pinnipeds	105	124	121	126	121	121	123	123	118	116
100 Hz to 20 kHz	Otariid Pinnipeds	-	-	-	-	-	121	-	-	118	116
150 Hz to 20 kHz	Mid Frequency Cetaceans	104	119	118	123	121	120	120	120	117	114
200 Hz to 20 kHz	High Frequency Cetaceans	104	117	117	122	120	119	118	119	116	113
1 Hz to 20 kHz	Broadband ⁶ Background – fish and murrelets	106	130	123	128	123	123	124	126	123	125

¹ Dahl et al. 2010. Measured in April 2010.

² Laughlin 2011b. Measured in March 2011.

³ Laughlin 2011c. Measured in April 2011.

⁴ Laughlin 2011d. Measured in April 2011.

⁵ Laughlin 2011a. Measured in May 2011.

⁶ Broadband level used for establishing Action Areas, and for MMPA permitting.

⁷ Measured in October 2013.

⁸ Measured in February 2014.

⁹ Measured in February 2014.

¹⁰ Measured in April 2015.

Table 2: Underwater Background Monitoring Results, Daytime Only.

Frequency Range	Functional Hearing Group	Port									
		Townsend	Anacortes	Edmonds	Seattle	Mukilteo	Mukilteo	Kingston	Vashon	Southworth	Coupeville
		50% CDF ¹ (dB)	50% CDF ² (dB)	50% CDF ³ (dB)	50% CDF ⁴ (dB)	50% CDF ⁵ (dB)	50% CDF ¹⁰ (dB)	50% CDF ⁵ (dB)	50% CDF ⁷ (dB)	50% CDF ⁸ (dB)	50% CDF ⁹ (dB)
7 Hz to 20 kHz	Low Frequency Cetaceans	107	133	123	130	124	124	126	128	123	124
75 Hz to 20 kHz	Phocid Pinnipeds	107	125	121	127	122	121	126	125	121	119
100 Hz to 20 kHz	Otariid Pinnipeds	-	-	-	-	-	121	-	-	118	119
150 Hz to 20 kHz	Mid Frequency Cetaceans	107	124	120	124	122	121	122	122	118	118
200 Hz to 20 kHz	High Frequency Cetaceans	106	123	119	124	122	121	120	121	117	117
1 Hz to 20 kHz	Broadband ⁶ Background – fish and murrelets	107	133	123	141	124	124	126	128	124	125

¹ Dahl et al. 2010. Measured in April 2010.

² Laughlin 2011b. Measured in March 2011.

³ Laughlin 2011c. Measured in April 2011.

⁴ Laughlin 2011d. Measured in April 2011.

⁵ Laughlin 2011a. Measured in May 2011.

⁶ Broadband level used for establishing Action Areas, and for MMPA permitting.

⁷ Measured in October 2013.

⁸ Measured in February 2014.

⁹ Measured in February 2014.

¹⁰ Measured in April 2015.

INTRODUCTION

This technical report presents results of underwater background sound levels measured near various ferry terminals in Puget Sound in an effort to determine site specific underwater background sound levels to assist biologists in the determination of the boundary of the zone of influence for marine mammals. Five to seven days of data were collected at each location at different times of the year over 2 years. Three consecutive full 24-hour cycles (e.g., 6AM to 6AM) were analyzed as part of this report at each location.

30-second RMS values both with and without a high-pass filter applied at 7 Hz for the low frequency cetaceans, 75 Hz for the Phocid pinnipeds, 100 Hz for Otariid pinnipeds, 150 Hz for the mid frequency cetaceans (including Killer Whales) and 200 Hz for the high frequency cetaceans were plotted using a Cumulative Density Function (CDF) to determine the percent of time each sound level occurred during a continuous 72-hour recording. The 50th percentile from the CDF plot reflects a kind of average background sound level near the ferry terminal.

The exclusion of the frequencies below 7 Hz, 75 Hz, 100 Hz, 150 Hz and 200 Hz was used to approximate the functional hearing group frequency ranges described in Southall et al., (2007) and NOAA, (2013). Typical marine mammal hearing range extends well past the 20 kHz upper limit of the equipment used to collect data, although their sensitivity to noise at the higher frequencies diminishes with increasing frequencies. According to Dr. Peter Dahl of the University of Washington Applied Physics Lab, the additional higher frequencies, and frequencies below 1Hz, do not substantially add to overall sound levels (Dahl, pers. comm., 2010).

Washington State Ferries (WSF) plans to collect underwater background data for all of the ferry terminal areas. Seasonal variation due to small motor boats can potentially raise the background +3 dB_{RMS} during summer days (Veirs 2006). If a project is taking place in the summer, and background levels were measured in another season, it may be appropriate to add +3 dB_{RMS} to the reported background.

UNDERWATER SOUND LEVELS

Characteristics of Underwater Sound

Several descriptors are used to describe underwater noise impacts. Two common descriptors are the Root Mean Square (RMS) pressure level and the Sound Exposure Level (SEL). The RMS level is the square root of the energy divided by the impulse duration. This level, presented in dB re: 1 μ Pa, has been used by the National Marine Fisheries Service (NMFS) in criteria for judging impacts to marine mammals from underwater vibratory or continuous-type sounds. It can be presented in Pascals (Pa) or decibels (dB) referenced to a pressure of 1 micropascal (μ Pa). Since water and air are two distinctly different media, a different sound level reference pressure is used for each. In water, the most commonly used reference pressure is 1 μ Pa whereas the reference pressure for air is 20 μ Pa. Except where otherwise noted, sound levels reported in this report are expressed in dB re: 1 μ Pa.

The SEL is the squared sound pressure integrated or summed over time referenced to the standard pressure squared times one second and then converted to decibels. Thus, if a sound having a level of 120 dB persists for 1 second the SEL produced by that sound is 120 dB re: 1 μ Pa²-sec. If that sound persists for 10 seconds, the SEL is 130 dB re: 1 μ Pa²-sec. If it persists for 100 seconds, the SEL is 140 dB re: 1 μ Pa²-sec, and so on. SEL is accumulated over time to produce the cumulative SEL. For vibratory pile driving the SEL is calculated based on the 10-second RMS values that are calculated over the period of the drive or over all drives for a particular day. The formula used to convert 10-second RMS values to an SEL value is:

$$\text{RMS} + 10 \cdot \text{LOG}(\tau)$$

Where τ is the time interval (10 seconds). In other words the SEL is the 10-second RMS value plus 10. These individual SEL values are then accumulated over the pile drive or over the day for multiple piles and the cumulative SEL is calculated. There are currently no thresholds for marine mammals using a cumulative SEL although NOAA has proposed new cumulative SEL (cSEL) thresholds (NOAA, 2013).

One-third octave band analysis offers a more convenient way to look at the composition of the sound. One-third octave bands are frequency bands whose upper limit in hertz is $2^{1/3}$ (1.26) times the lower limit. The width of a given band is 23% of its center frequency. For example, the 1/3-octave band centered at 100 Hz extends from 89 to 112 Hz, whereas the band centered at 1000 Hz extends from 890 to 1120 Hz. The 1/3-octave band level is calculated by integrating the spectral densities between the band frequency limits. Conversion to decibels is

$$\text{dB} = 10 \cdot \text{LOG}(\text{sum of squared pressures in the band})$$

Sound levels are often presented for 1/3-octave bands because the effective filter bandwidth of mammalian hearing systems is roughly proportional to frequency and often about 1/3-octave. In other words, a mammal's perception of a sound at a given frequency will be strongly affected by other sounds within a 1/3-octave band around that frequency. The overall level (summing all frequencies) of a broadband sound exceeds the level in any single 1/3-octave band.

METHODOLOGY

No frequency weighting (*e.g.*, A-weighting or C-weighting) was applied to the underwater acoustic measurements presented in this report. Underwater sound levels quoted in this report are given in decibels relative to the standard underwater acoustic reference pressure of 1 micro Pascal.

One hydrophone was deployed with the Autonomous Multichannel Acoustic Recorder (AMAR) approximately 10 feet from the bottom and approximately ½ mile from the various ferry terminals. The frequency response range of the hydrophone is 1 Hz to 150 kHz. The water depth varied where the AMAR was deployed. The AMAR had a nylon sleeve or ‘sock’ over the cage which protects the hydrophone from any potential flow noise that could become an issue at current speeds above 1 meter per second. The frequency range analyzed for the AMAR data is 1 Hz to 20 kHz.

Broadband, 1 Hz to 20 kHz, and high pass filtered, 7 Hz to 20 kHz, 75 Hz to 20 kHz, 100 Hz to 20 kHz, 150 Hz to 20 kHz, and 200 Hz to 20 kHz 30-second Root Mean Square (RMS) noise levels were calculated for each 30-seconds recorded during the three 24-hour continuous recordings that were analyzed for each terminal as part of this report.

Following the 2009 NMFS guidance on collecting and reporting underwater background noise levels and the functional hearing groups from Southall et al. (2007) and NOAA (2013), 30-second RMS values both with and without a high pass filter applied at 7 Hz for the low frequency cetaceans, 75 Hz for the Phocid pinnipeds, 100 Hz for the Otariid pinnipeds, 150 Hz for the mid frequency cetaceans (Killer Whales) and 200 Hz for the high frequency cetaceans was plotted using a Cumulative Density Function (CDF) to determine the percent of time each sound level occurred during the 72-hour recording. The 50th percentile from the CDF plot reflects the average background sound level near the Anacortes ferry terminal.

The exclusion of the frequencies below 7 Hz, 75 Hz, 100 Hz, 150 Hz and 200 Hz in this analysis was used to approximate the functional hearing group frequency ranges described in Southall et al., (2007). Typical marine mammal hearing range extends well past our 20 kHz upper limit of the equipment although their sensitivity to noise at the higher frequencies diminishes with increasing frequencies. According to Peter Dahl of the University of Washington Applied Physics Lab the additional higher frequencies do not add to the overall sound levels by a substantial amount (Dahl, pers. Comm., 2010).

Background sound levels during the daytime are dominated by the presence of ferry traffic cargo shipping traffic and occasional outboard motorboats. Root Mean Square (RMS) background noise levels are reported in terms of the 30-second average continuous sound level and have been computed from the Fourier transform of pressure waveforms in 30-second time intervals. The distribution of the data is approximately log-normal however there is some variability in the daily distributions of the data.

Once it was determined that the data was approximately log-normally distributed, the data for all three days were then plotted as a Cumulative Distribution Function following the NOAA (2012) guidance on analyzing background sound levels.

The data were plotted in 1/3-octave bands for the entire 72-hour recording analyzed to evaluate the frequency distribution of the background noise levels. One-third octave band analysis offers a more convenient way to look at the composition of the sound and is an improvement over the spectral density plots. One-third octave bands are frequency bands whose upper limit in hertz is $2^{1/3}$ (1.26) times the lower limit. The width of a given band is 23% of its center frequency. For example, the 1/3-octave band centered at 100 Hz extends from 89 to 112 Hz, whereas the band centered at 1000 Hz extends from 890 to 1120 Hz. The 1/3-octave band level is calculated by integrating the spectral densities between the band frequency limits. Conversion to decibels is

$$= 10 * \text{LOG} (\text{sum of squared pressures in the band})$$

Sound levels are often presented in 1/3-octave bands because the effective filter bandwidth of mammalian hearing systems is roughly proportional to frequency and often about 1/3-octave. In other words a mammal's perception of a sound at a given frequency will be strongly affected by other sounds within a 1/3-octave band around that frequency. The overall level (summing all frequencies) of a broadband sound exceeds the level in any single 1/3-octave band.

The 30-second RMS data were averaged on an hourly basis for each frequency range analyzed. These averages are plotted over time indicating that there is a daily peak at each location monitored. The sound levels measured during the daytime appear to be slightly less variable than the nighttime sound levels which is probably due to the regular ferry traffic in the area during the daytime hours.

RESULTS

Port Townsend Ferry Terminal

Seven days of data were collected between April 19, 2010 and April 28, 2010 near the Port Townsend ferry terminal (Figure 1). Three full 24-hour cycles (e.g., 6AM to 6AM) were analyzed as part of this report from 6:10 AM on Tuesday March 22nd through 6:10 AM Friday March 25th. One hydrophone was deployed with the Autonomous Multichannel Acoustic Recorder (AMAR) approximately 10 feet from the bottom and approximately 3,000 feet from the Port Townsend ferry terminal. The water depth was 48 feet where the AMAR was deployed.

There are 10 daily arrival/departures at the Port Townsend ferry terminal about every 90 minutes.

The distribution of the data is approximately log-normal however there is some variability in the daily distributions of the data (Figure 2).

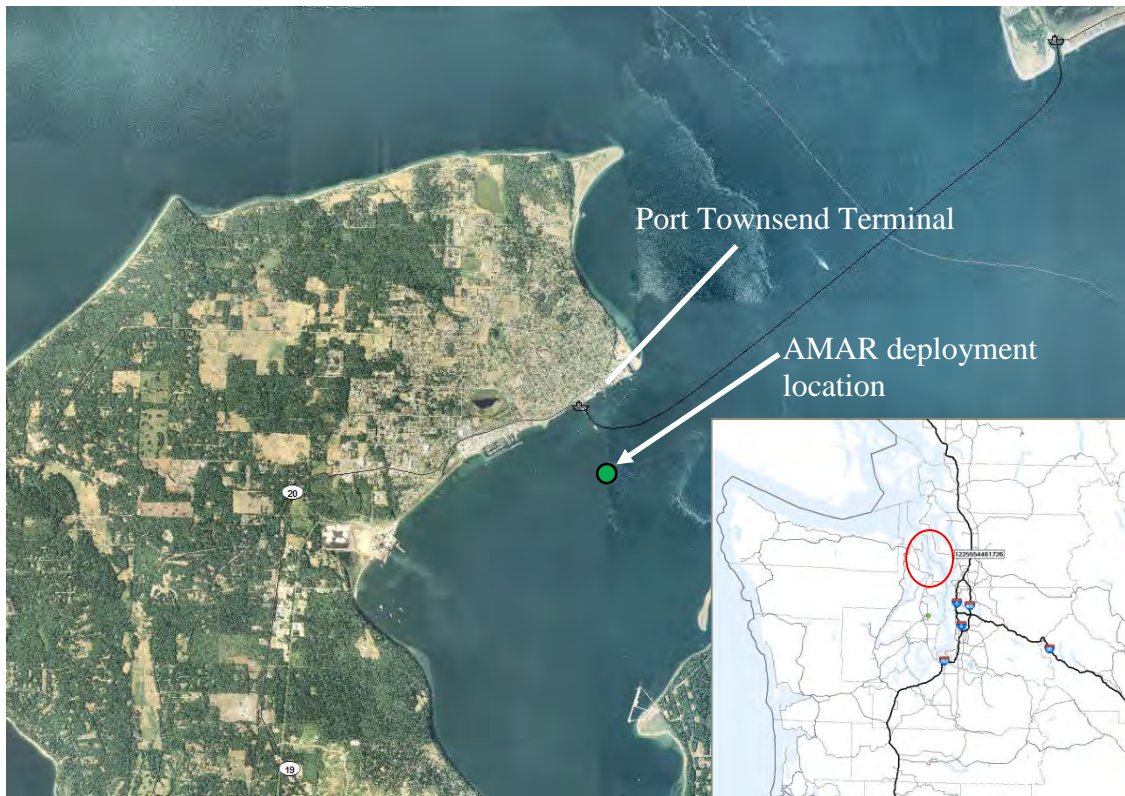


Figure 1: Location of the Autonomous Multichannel Acoustic Recorder (AMAR) deployment at Port Townsend.

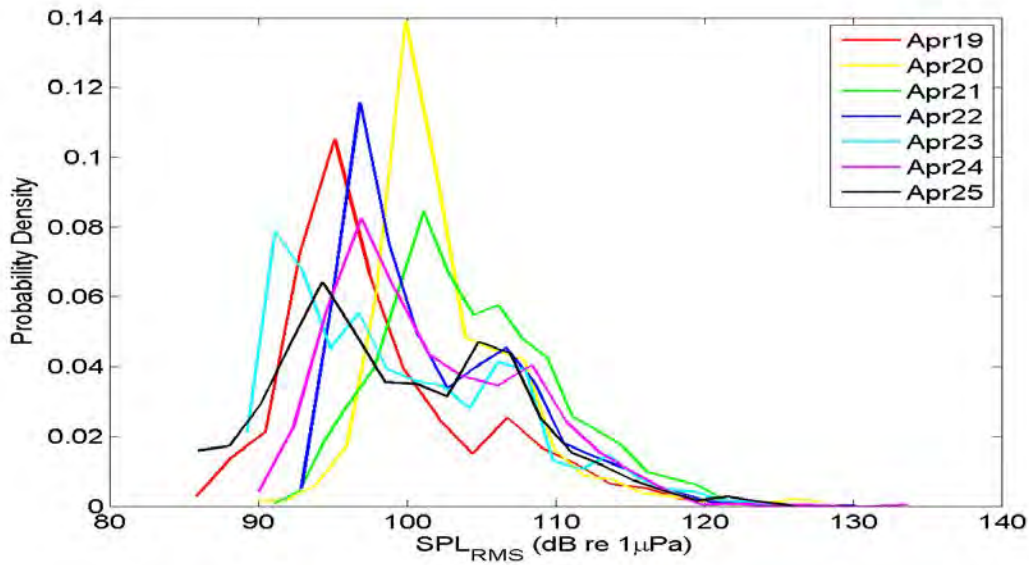


Figure 2: Probability Density Function (PDF) for the 1 Hz to 20 KHz analysis on a daily (24-hr) basis for Port Townsend (Dahl et al., 2010).

A CDF plot for the full frequency range (Figure 3) shows the typical sigmoid or ‘S’ shape. The overall average background sound level is approximated with the 50th percentile. The background sound levels for all frequencies measured between 1 Hz and 20 kHz ranged between 91 dB and 138 dB with the 50th percentile occurring at 106 dB (Figure 3). Background sound level analysis for functional hearing groups from Southall et al. (2007) and NOAA (2013) is shown in Table 3.

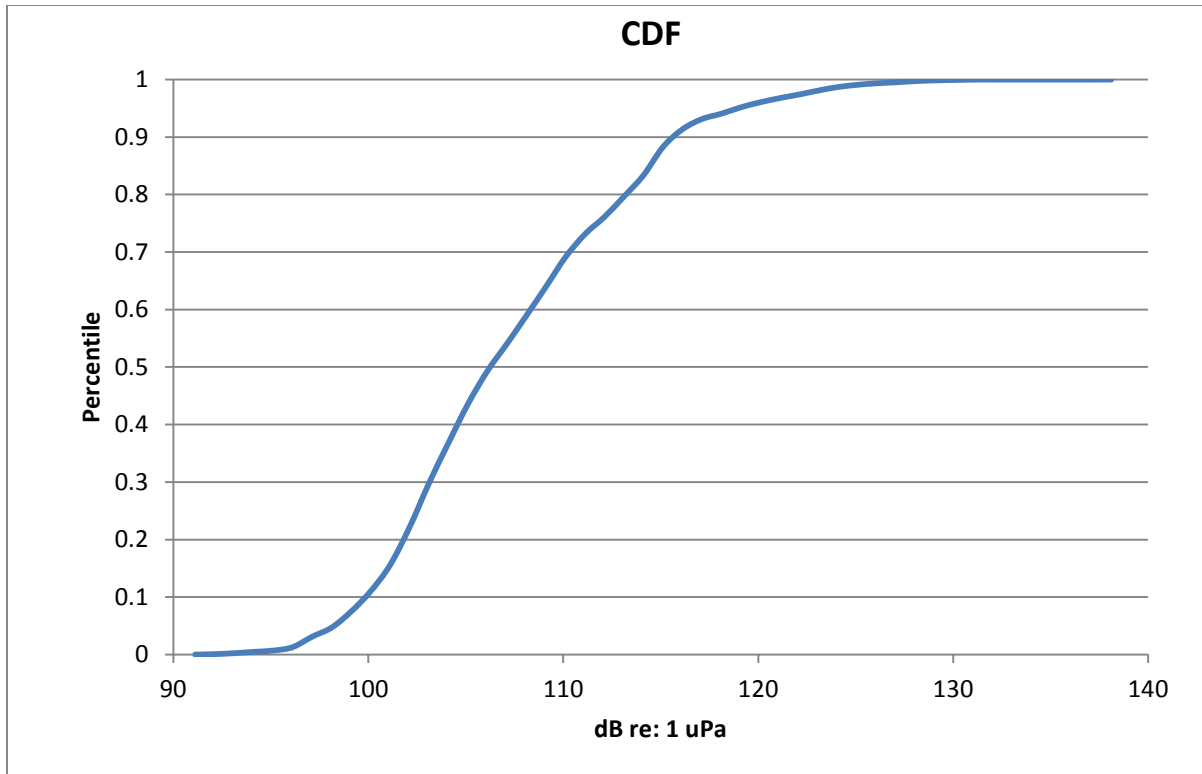


Figure 3: Cumulative Distribution Function (CDF) for the 1 Hz to 20 kHz analysis for all three days at Port Townsend.

In addition to the continuous sound level recording analysis for the 72-hour period NMFS allows background levels to be reported for only the daytime (6 AM to 6PM). Table 3 includes the same data analyzed for background sound levels representing daytime periods.

Table 3: Background Sound Level Results, Port Townsend Ferry Terminal.

Frequency Range	Functional Hearing Group	72-h 50% Cumulative Density Function (dB)	Daytime 50% Cumulative Density Function (dB)
7 Hz to 20 kHz	Low Frequency Cetaceans	106	107
75 Hz to 20 kHz	Phocid Pinnipeds	105	107
100 Hz to 20 kHz	Otariid Pinnipeds	-	-
150 Hz to 20 kHz	Mid Frequency Cetaceans	104	107
200 to 20 kHz	High Frequency Cetaceans	104	106
1 Hz to 20 kHz	N/A	106	107

Figure 4 shows the overall 1/3-octave bands for the entire 72-hour recording analyzed for Port Townsend. The dominant frequency is at 50 Hz with the energy of the remaining frequencies above and below dropping off rapidly. These low frequency sources at 50 Hz are most likely from the ferry vessel traffic in the area and are typical of larger vessels.

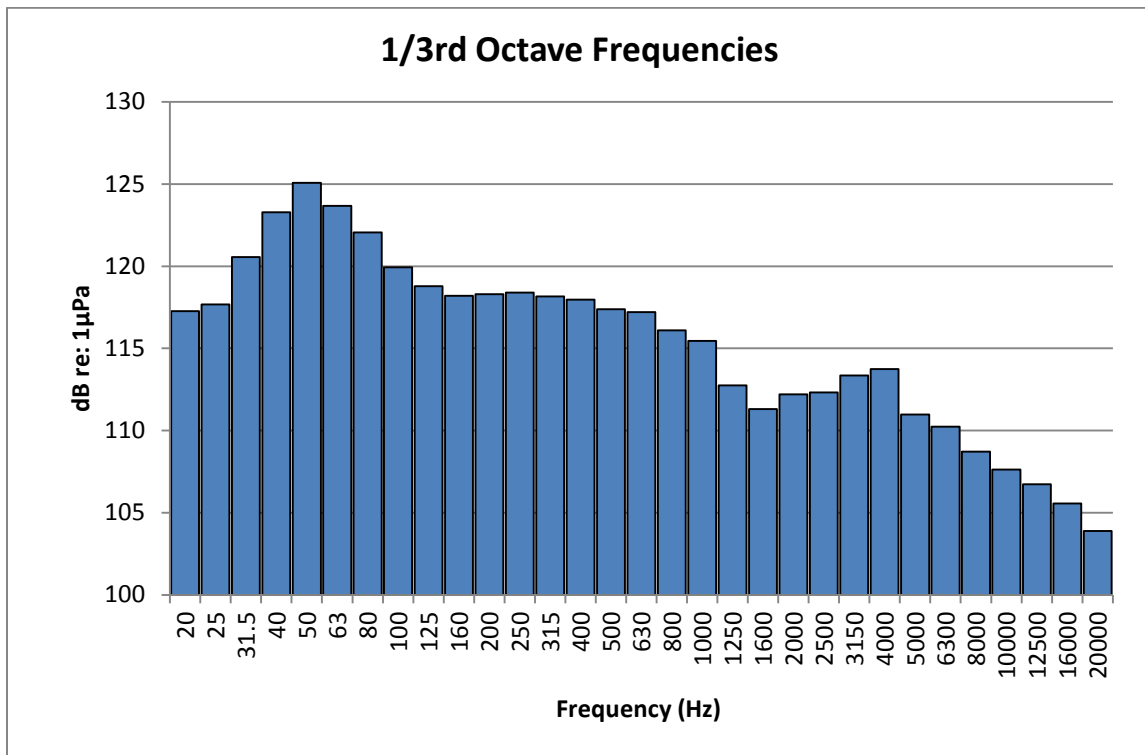


Figure 4: 1/3rd octave analysis of the broadband 20 Hz to 20 kHz frequencies for the 72-hour period near the Port Townsend ferry terminal.

Figure 5 shows results of the hourly averages of RMS values calculated between 1 Hz and 20 kHz. The lowest values at night are approximately 16 dB lower than the highest levels measured during the daytime.

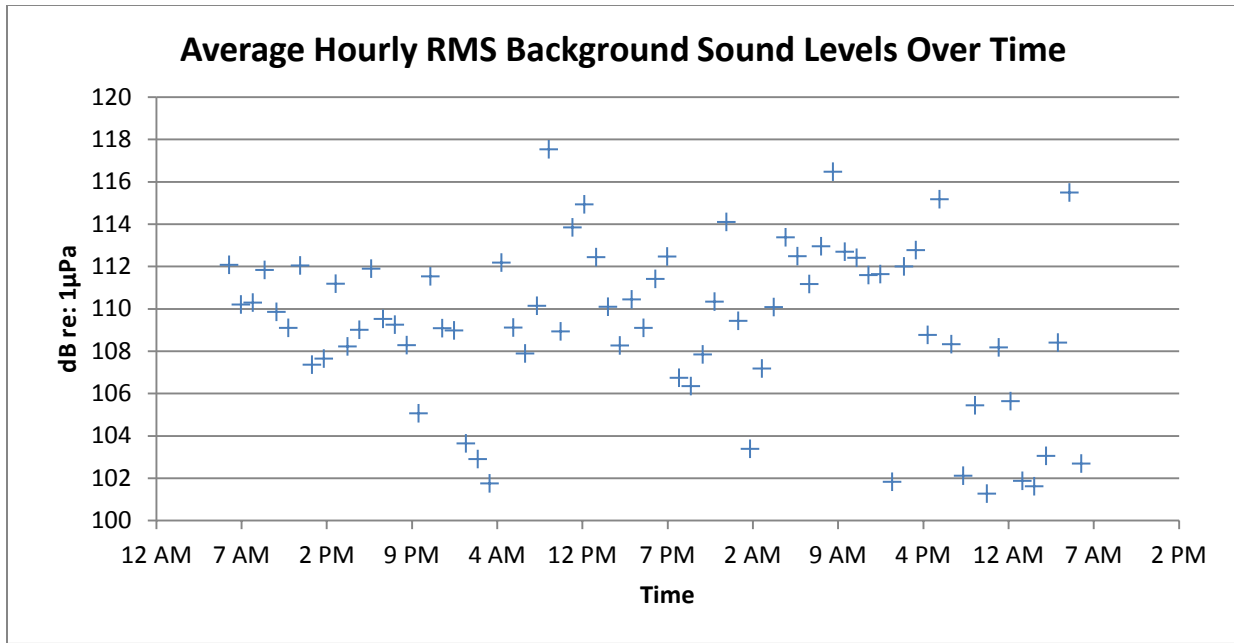


Figure 5: Average hourly background sound levels measured for a 72-hour period near the Port Townsend Ferry terminal including frequencies between 1 Hz and 20 kHz.

There is a fair amount of variability in the hourly average sound levels at Port Townsend. This is likely due to the relatively low frequency of ferry departures and arrivals and the 90 minute ferry intervals not corresponding well with the hourly averages.

Anacortes Ferry Terminal

Seven days of data were collected between March 21, 2011 and March 28, 2011 near the Anacortes ferry terminal (Figure 6). Three full 24-hour cycles (e.g., 6AM to 6AM) were analyzed as part of this report from 6:10 AM on Tuesday March 22nd through 6:10 AM Friday March 25th. One hydrophone was deployed with the Autonomous Multichannel Acoustic Recorder (AMAR) approximately 10 feet from the bottom and 2,772 feet from the Anacortes ferry terminal. The water depth was 78 feet where the AMAR was deployed.

There is only one ferry departure in the morning to Friday Harbor and Sidney, B.C and one arrival at Anacortes in the afternoon from these destinations. Additionally, three separate vessels depart Anacortes approximately every hour and arrive from the San Juan Islands approximately every hour or two in-between. A total of ten ferry vessels per day arrive / depart the Anacortes ferry terminal daily during spring weekdays when this data was collected. The slope of the sea bottom in the study area near the Anacortes ferry terminal only 0.6 degrees.

The distribution of the data is approximately log-normal however there is some variability in the daily distributions of the data (Figure 7).

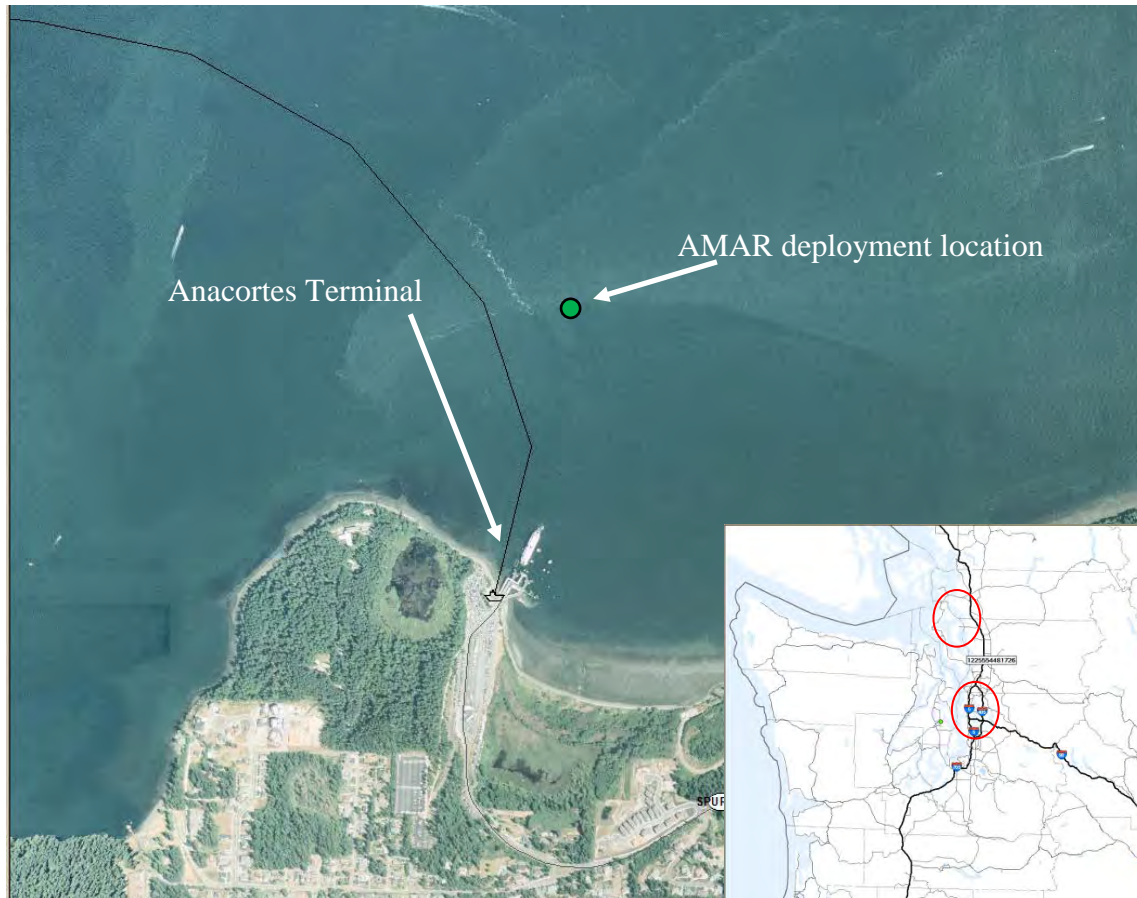


Figure 6: Location of the Autonomous Multichannel Acoustic Recorder (AMAR) deployment at Anacortes.

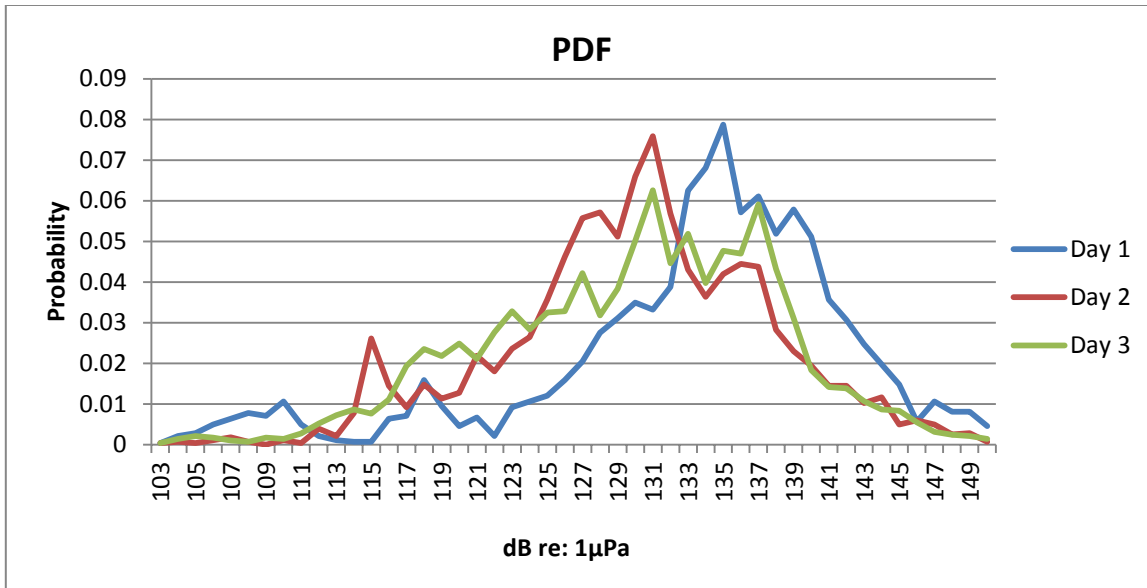


Figure 7: Probability Density Function (PDF) for the 1 Hz to 20 kHz analysis on a daily (24-hr) basis.

The background sound levels for all frequencies measured between 1 Hz and 20 kHz ranged between 99 dB and 146 dB with the 50th percentile occurring at 130 dB (Figure 3). Analyses of the other functional hearing group frequencies are summarized in Table 4.

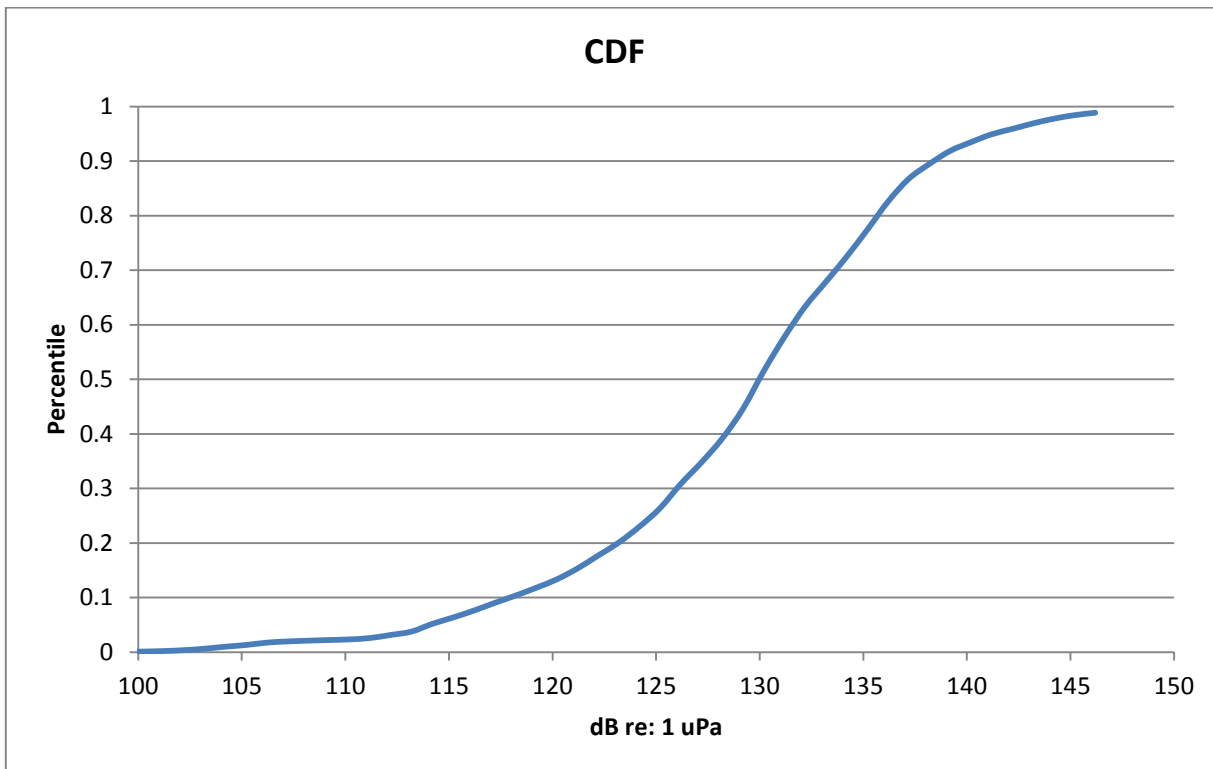


Figure 8: Cumulative Distribution Function (CDF) for the 1 Hz to 20 kHz analysis for all three days at Anacortes.

Table 4: Background Sound Level Results, Anacortes Ferry Terminal.

Frequency Range	Functional Hearing Group	72-h 50% Cumulative Density Function (dB)	Daytime 50% Cumulative Density Function (dB)
7 Hz to 20 kHz	Low Frequency Cetaceans	129	133
75 Hz to 20 kHz	Phocid Pinnipeds	124	125
100 Hz to 20 kHz	Otariid Pinnipeds	-	-
150 Hz to 20 kHz	Mid Frequency Cetaceans	119	124
200 to 20 kHz	High Frequency Cetaceans	117	123
1 Hz to 20 kHz	N/A	130	133

Figure 9 shows the overall 1/3-octave bands for the entire 72-hour recording analyzed for Anacortes. The dominant frequency is at 50 Hz with the energy of the remaining frequencies above and below dropping off rapidly. These low frequency sources at 50 Hz are typical of larger vessels and so are most likely from the ferry vessel traffic in the area.

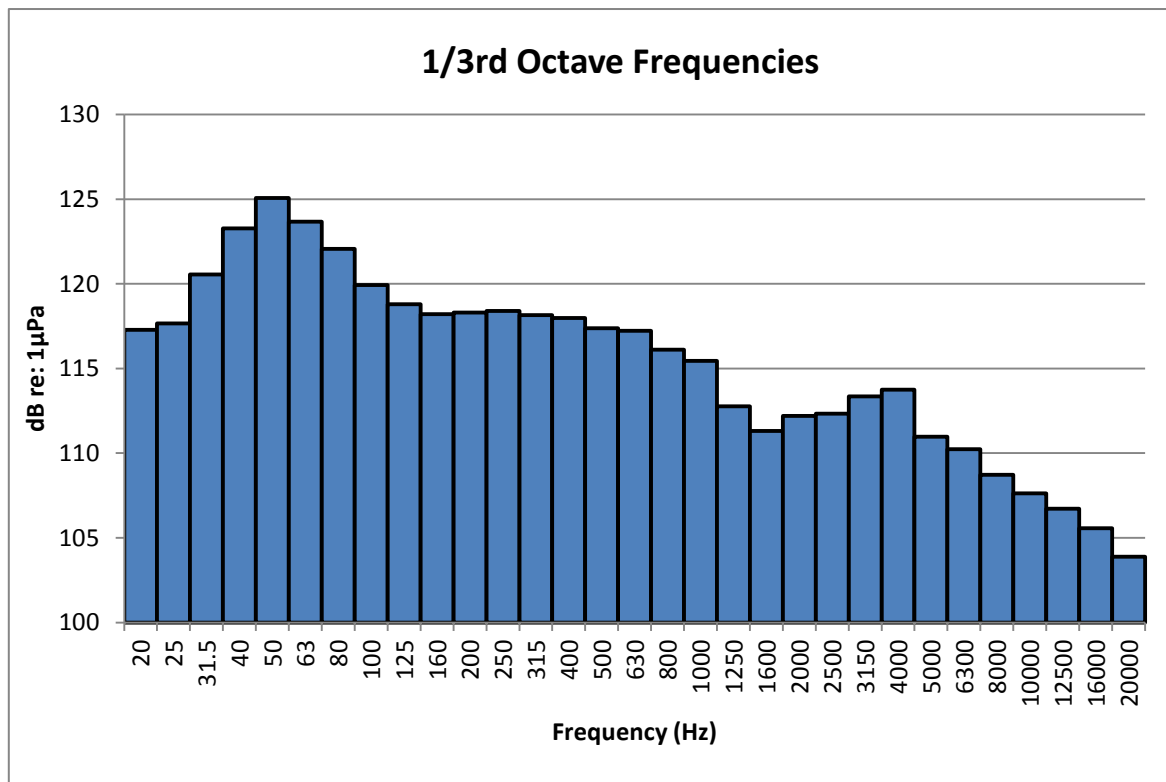


Figure 9: 1/3rd octave analysis of the broadband 1 Hz to 20 kHz frequencies for the 72-hour period near the Anacortes ferry terminal.

Figure 10 shows results of the hourly averages of RMS values calculated between 1 Hz and 20 kHz. The lowest values at night are approximately 24 dB lower than the highest levels measured during the daytime.

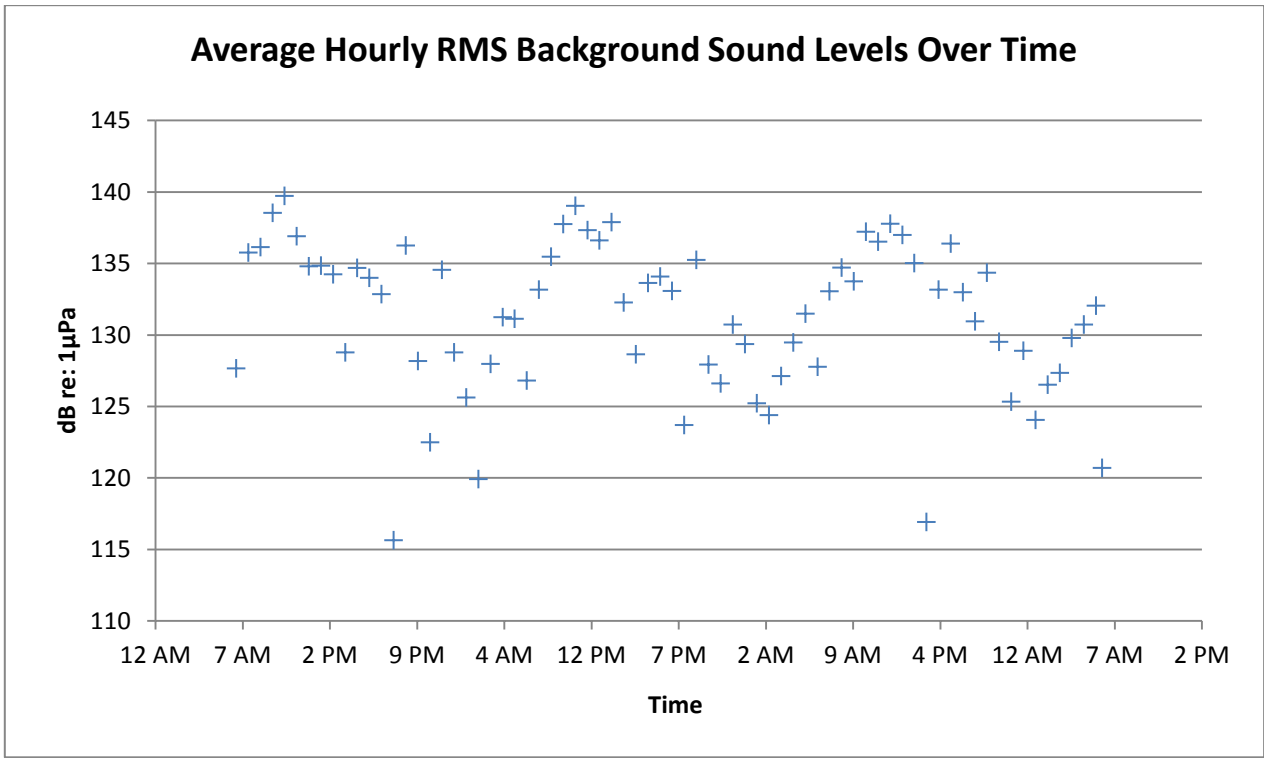


Figure 10: Average hourly background sound levels measured for a 72-hour period near the Anacortes Ferry terminal including frequencies between 1 Hz and 20 kHz.

Edmonds Ferry Terminal

Seven days of data were collected between April 7, 2011 and April 14, 2011 near the Edmonds ferry terminal (Figure 11). Three full 24-hour cycles (e.g., 6AM to 6AM) were analyzed as part of this report from 6:17 AM on Monday April 11th through 6:17 AM Thursday April 14th.

One hydrophone was deployed with the Autonomous Multichannel Acoustic Recorder (AMAR) approximately 10 feet from the bottom and 2,737 feet from the Edmonds ferry terminal. The water depth was 360 feet where the AMAR was deployed. The slope in the study area near the Edmonds ferry terminal is only 2.2 degrees slope.

Background sound levels during the daytime are dominated by the presence of ferry traffic and occasional outboard motorboats. Twenty-six ferry vessels per day arrive / depart the Edmonds ferry terminal daily during spring weekdays.

The distribution of the data is approximately log-normal however there is some variability in the daily distributions of the data (Figure 12).

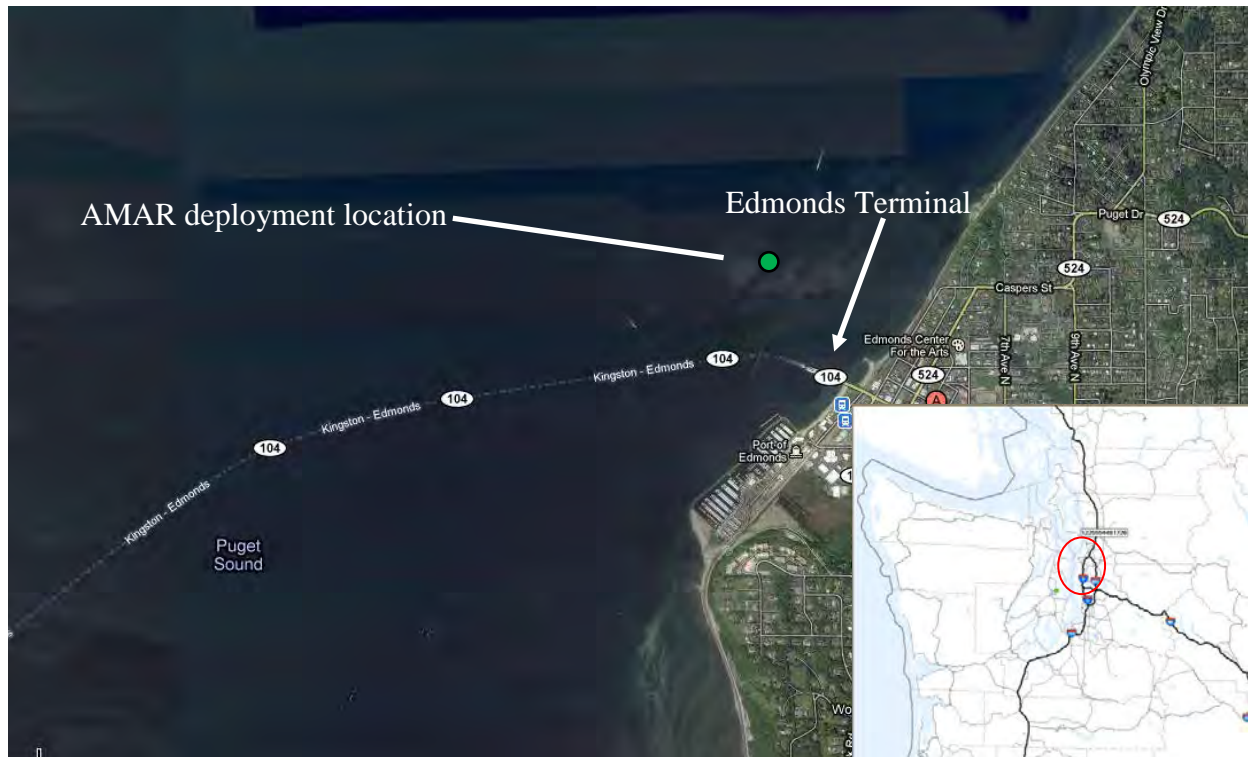


Figure 11: Location of the Autonomous Multichannel Acoustic Recorder (AMAR) deployment at Edmonds.

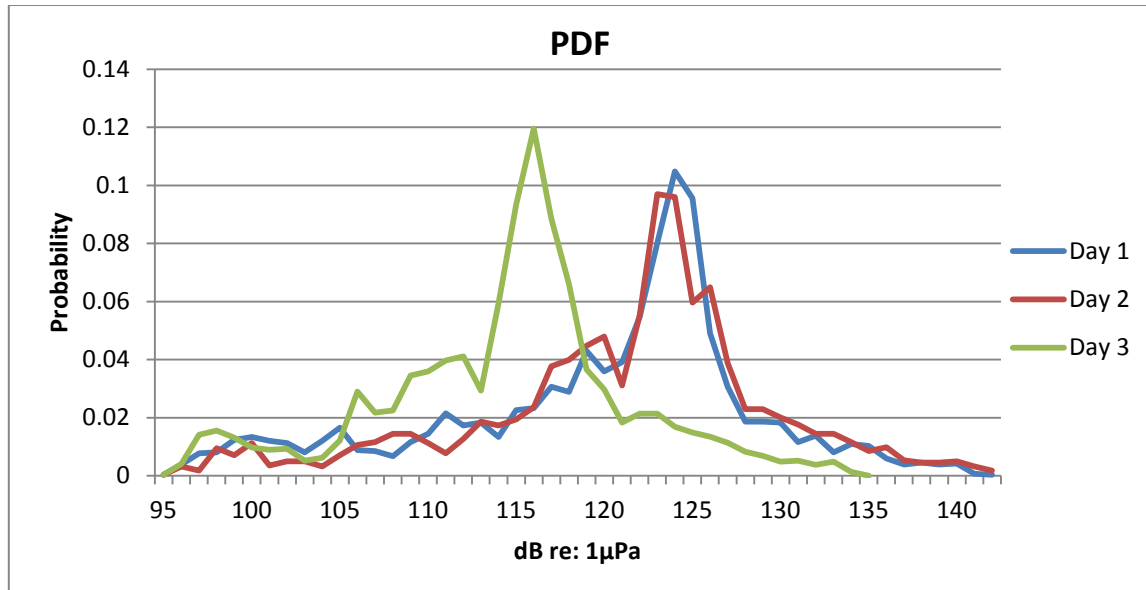


Figure 12: Probability Density Function (PDF) for the 1 Hz to 20 kHz analysis on a daily (24-hr) basis near Edmonds.

The background sound levels for all frequencies measured between 1 Hz and 20 kHz ranged between 95 dB and 141 dB with the 50th percentile occurring at 123 dB (Figure 13). Analyses of the other functional hearing group frequencies are summarized in Table 5.

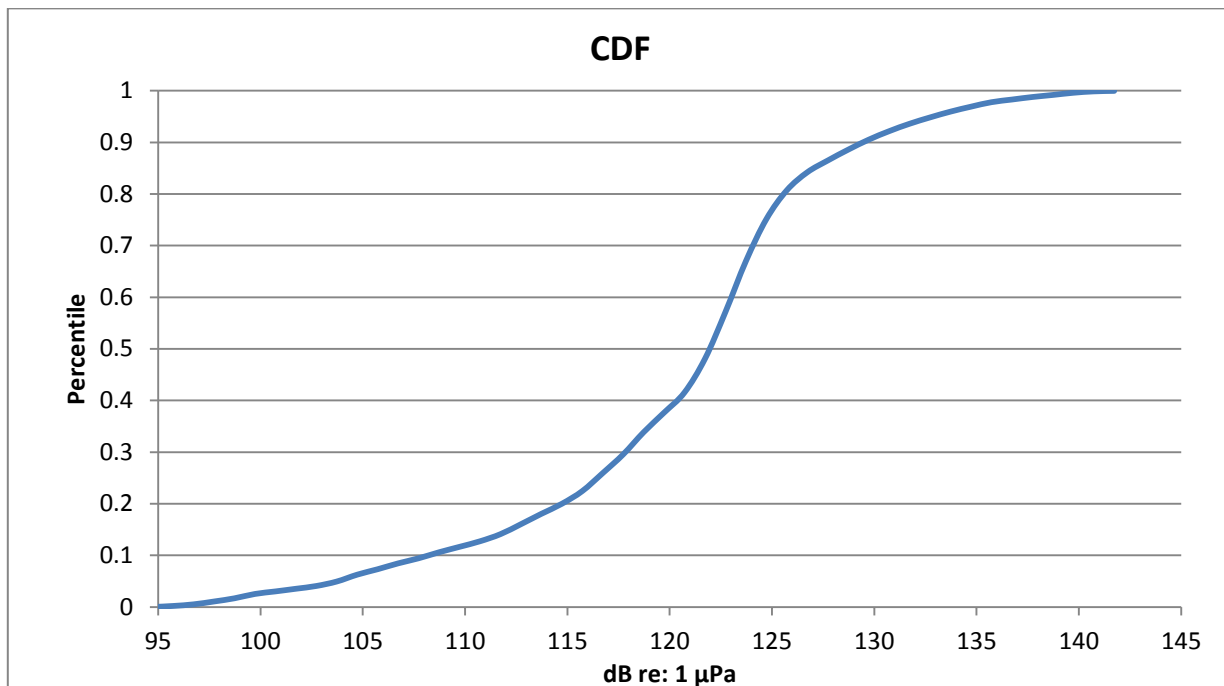


Figure 13: Cumulative Density Function (CDF) for the 1 Hz to 20 kHz analysis for all three days near Edmonds.

Table 5: Background Sound Level Results, Edmonds Ferry Terminal.

Frequency Range	Functional Hearing Group ¹	72-h 50% Cumulative Density Function (dB)	Daytime 50% Cumulative Density Function (dB)
7 Hz to 20 kHz	Low Frequency Cetaceans	122	123
75 Hz to 20 kHz	Phocid Pinnipeds	121	121
100 Hz to 20 kHz	Otariid Pinnipeds	-	-
150 Hz to 20 kHz	Mid Frequency Cetaceans	118	120
200 Hz to 20 kHz	High Frequency Cetaceans	117	119
1 Hz to 20 kHz	N/A - Broadband	123	123

¹ – Southall et al., 2007 describes the functional hearing groups for marine mammals and the frequency ranges of each group.

Figure 14 shows the overall 1/3-octave bands for the entire 72-hour recording analyzed for this report. The dominant frequency is approximately 50 to 63 Hz with the energy of the remaining frequencies below dropping off rapidly. These low frequency sources around 50 Hz are most likely from the ferry vessel traffic in the area.

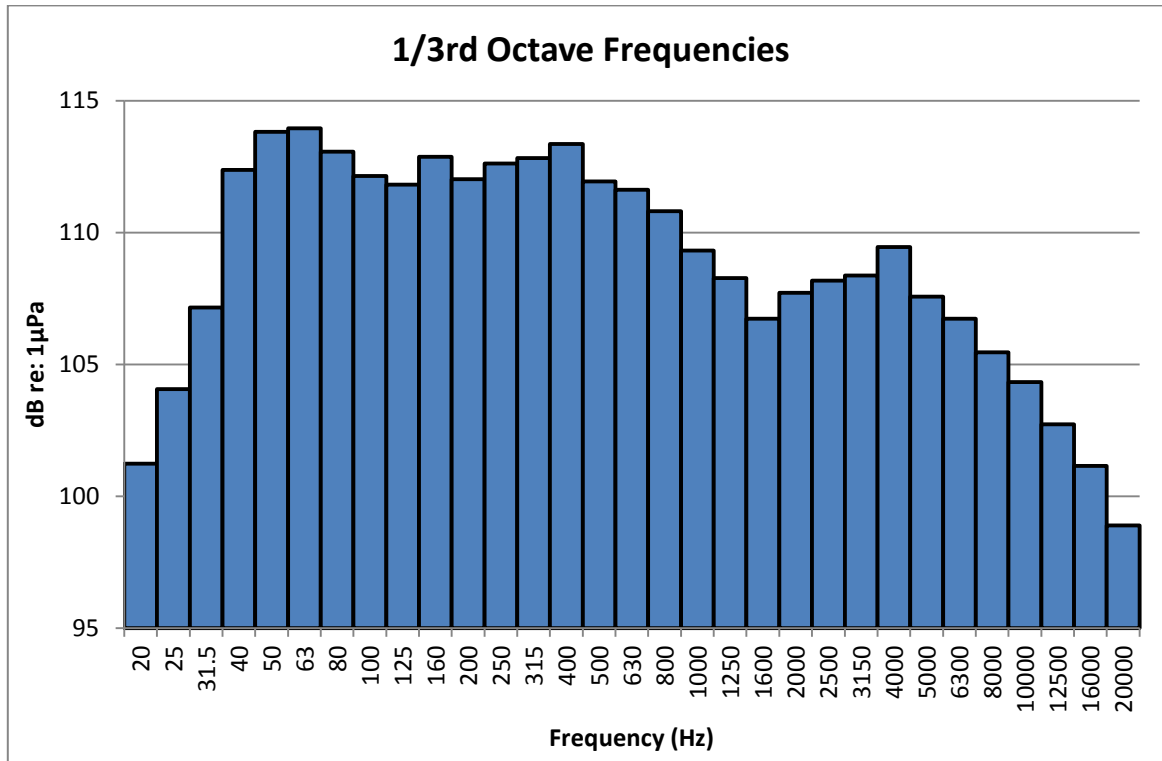


Figure 14: 1/3rd octave analysis of the broadband 20 Hz to 20 kHz frequencies for the 72-hour period near Edmonds.

The 30-second RMS data were averaged on an hourly basis and plotted over time (Figure 15). Figure 15 shows that there is a daily peak between 2 PM and 3 PM each day with the lowest sound levels recorded over this period between about 2 AM and 3 AM each day. Tuesday and Wednesday

daytime hourly sound levels were approximately 10 dB higher than the daytime hourly sound levels on Monday. The sound levels measured during the daytime appear to be slightly less variable than the nighttime sound levels which is probably due to the regular ferry traffic in the area during the daytime hours. The lowest values at night are approximately 45 dB lower than the highest levels measured during the daytime.

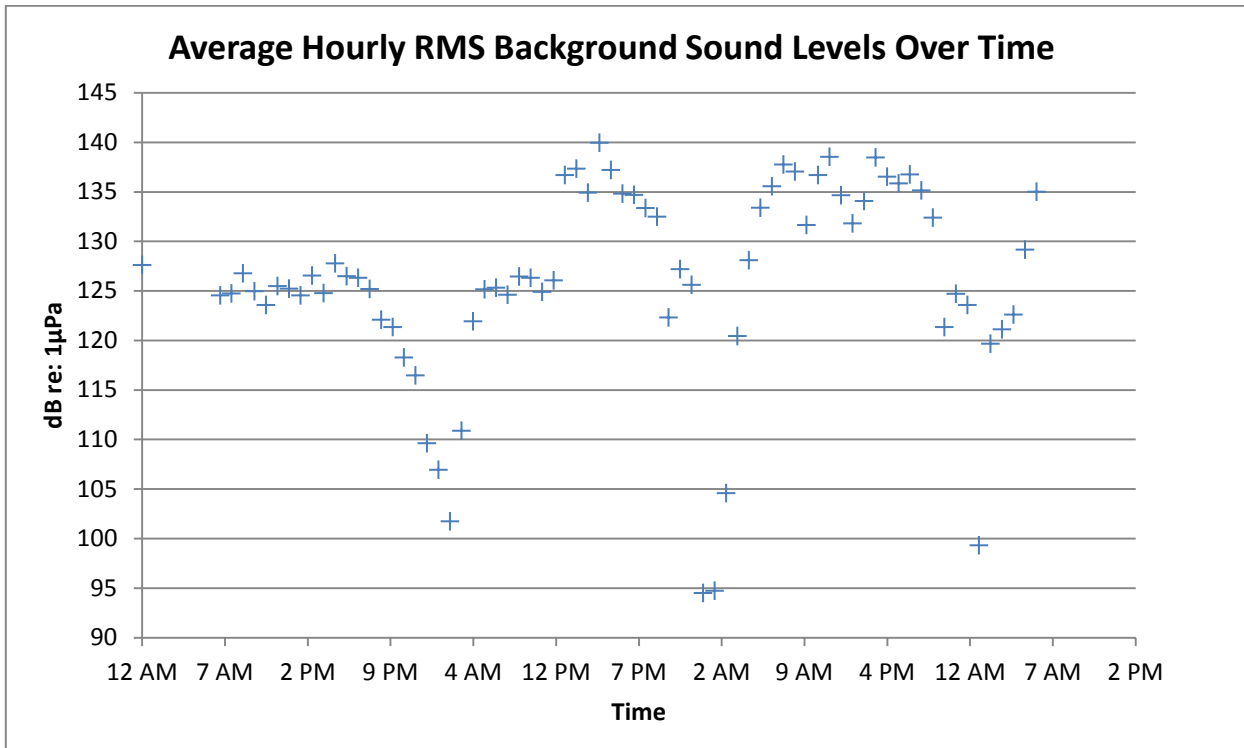


Figure 15: Average hourly background sound levels measured for a 72-hour period near the Edmonds Ferry terminal including frequencies between 1 Hz and 20 kHz.

Seattle Ferry Terminal

Seven days of data were collected between April 18, 2011 and April 22, 2011 near the Seattle ferry terminal (Figure 16). Three full 24-hour cycles (e.g., 6AM to 6AM) were analyzed as part of this report from 6:26 AM on Tuesday April 19th through 6:26 AM Friday April 22nd. The water depth was approximately 190 feet where the AMAR was deployed.

Background sound levels at the Seattle ferry terminal are dominated by the presence of ferry traffic and occasional outboard motorboats. Thirty-five ferry vessels per day arrive / depart the Seattle ferry terminal daily during spring weekdays. Background levels were measured at 2,864 feet northwest of the ferry terminal using the AMAR system.

The distribution of the data is approximately log-normal however there is some variability in the daily distributions of the data (Figure 17).

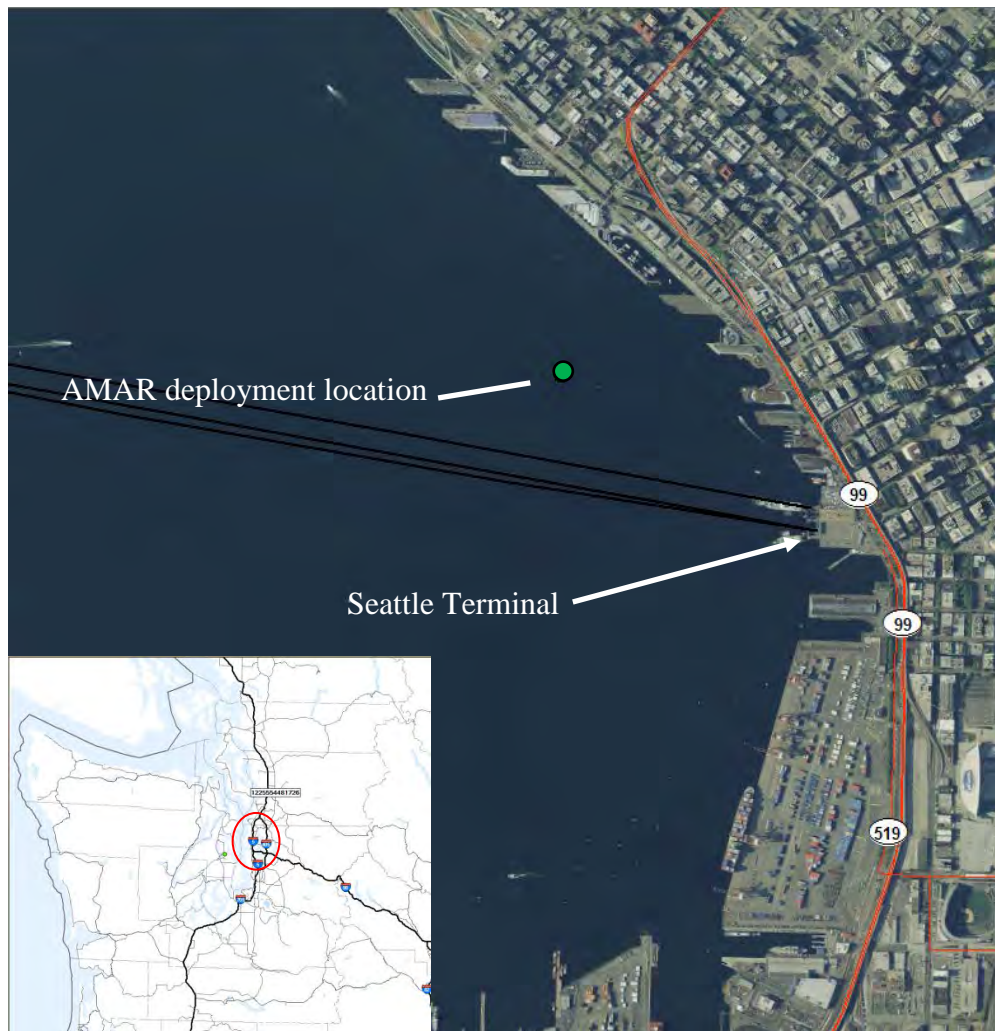


Figure 16: Location of the Autonomous Multichannel Acoustic Recorder (AMAR) deployment at Colman Dock in Seattle.

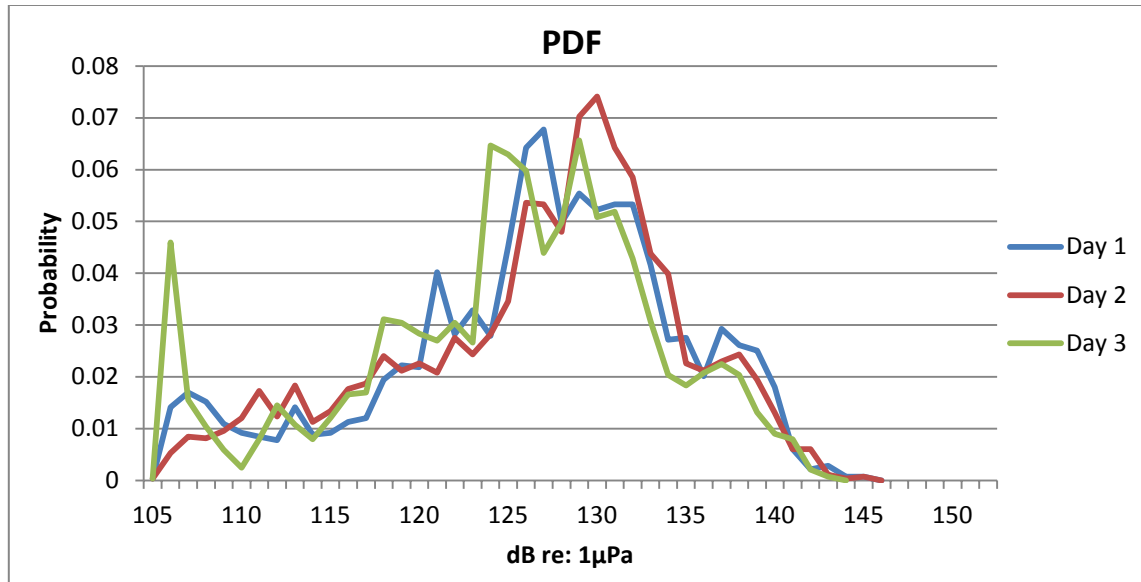


Figure 17: Probability Density Function (PDF) for the 1 Hz to 20 kHz analysis on a daily (24-hr) basis for the Seattle Ferry Terminal.

Once it was determined that the data was approximately log-normally distributed the data for all three days were then plotted as a Cumulative Distribution Function following the NOAA (2012) guidance on analyzing background sound levels. Figure 18 is the CDF plot for the full frequency range. The overall average background sound level is approximated with the 50th percentile.

The background sound levels for all frequencies measured between 1 Hz and 20 kHz ranged between 105 dB and 145 dB with the 50th percentile occurring at 128 dB (Figure 18). Analyses of the other functional hearing group frequency ranges are summarized in Table 6.

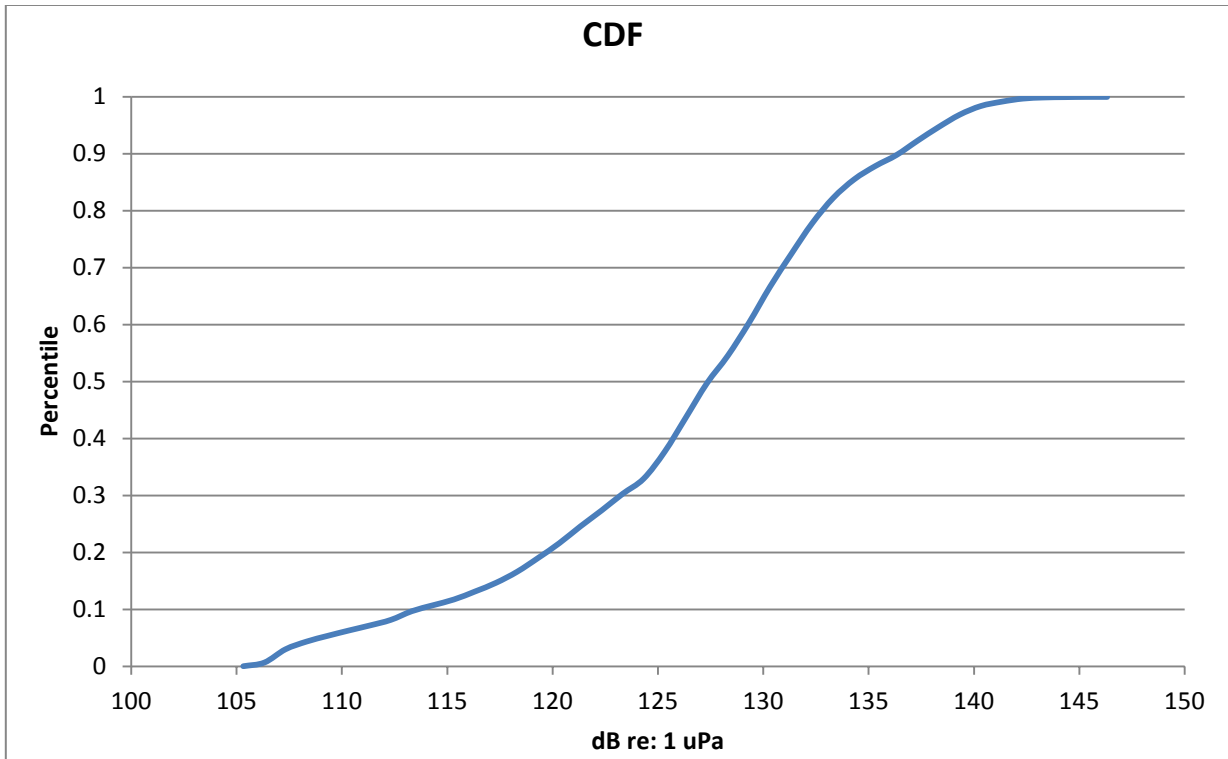


Figure 18: Cumulative Density Function (CDF) for the 1 Hz to 20 KHz analysis for all three days near Seattle.

Table 6: Background Sound Level Results, Seattle Ferry Terminal.

Frequency Range	Functional Hearing Group ¹	72-h 50% Cumulative Density Function (dB)	Daytime 50% Cumulative Density Function (dB)
7 Hz to 20 kHz	Low Frequency Cetaceans	127	130
75 Hz to 20 kHz	Phocid Pinnipeds	126	127
100 Hz to 20 kHz	Otariid Pinnipeds	-	-
150 Hz to 20 kHz	Mid Frequency Cetaceans	123	124
200 Hz to 20 kHz	High Frequency Cetaceans	122	124
20 Hz to 20 kHz	N/A - Broadband	128	141

¹ – Southall et al., 2007 describes the functional hearing groups for marine mammals and the frequency ranges of each group.

Figure 19 shows the overall 1/3-octave bands for the entire 72-hour recording analyzed for this report. The dominant frequency is approximately at 63 Hz with the energy of the remaining frequencies below dropping off rapidly. These low frequency sources around 63 Hz are most likely from the ferry vessel traffic in the area.

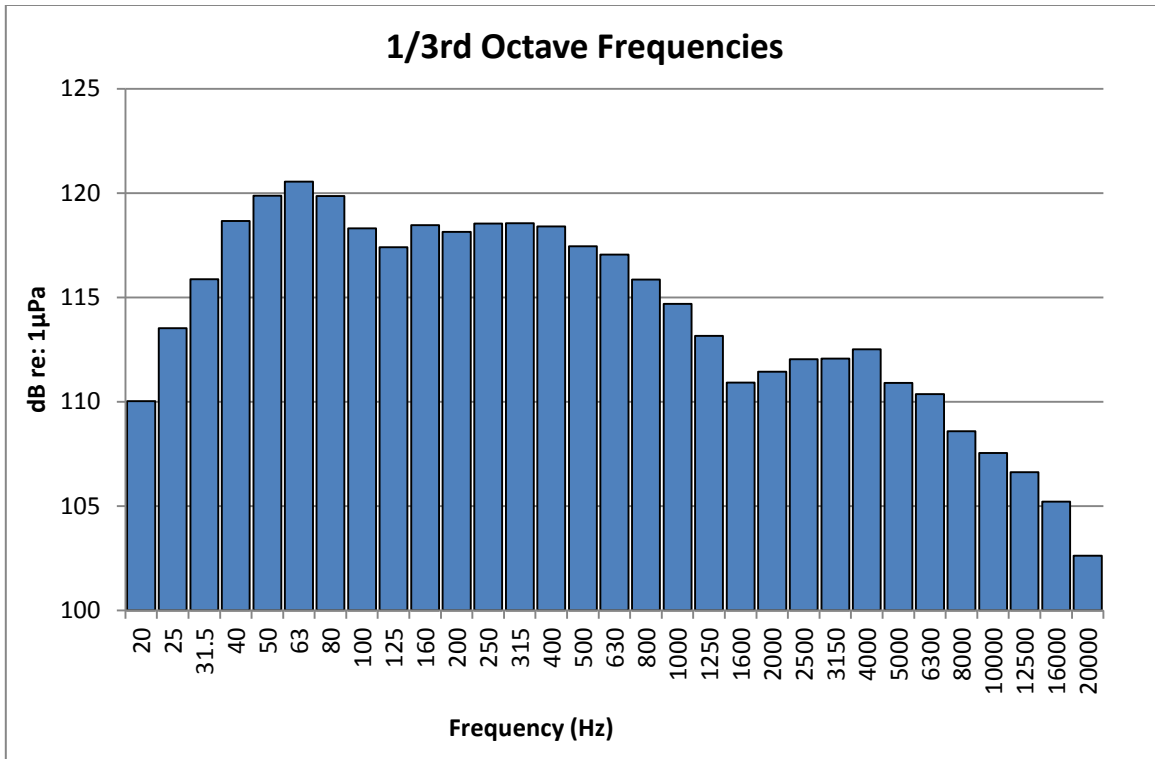


Figure 19: 1/3rd octave analysis of the broadband 20 Hz to 20 kHz frequencies for the 72-hour period near Seattle.

The 30-second RMS data were averaged on an hourly basis for each frequency range analyzed. These averages are plotted over time (Figure 20). Each Figure shows that there are two daily peaks at approximately 8 AM and 8 PM each day with the lowest sound levels recorded over this period between about 2 AM and 4 AM each day. The sound levels measured during the daytime appear to be slightly less variable than the nighttime sound levels which is probably due to the regular ferry traffic in the area during the daytime hours.

Mukilteo Ferry Terminal

Background sound levels were measured near the Mukilteo ferry terminal in May of 2014 to determine site specific underwater background sound levels. Nine days of data were collected between May 24, 2011 and June 2, 2011 near the Mukilteo ferry terminal (Figure 21). Three full 24-hour cycles (e.g., 6AM to 6AM) were analyzed as part of this report from 6:05 AM on Wednesday May 25th through 6:05 AM Saturday May 28th.

The AMAR was deployed approximately 10 feet from the bottom and 2,690 feet from the Mukilteo ferry terminal and 2,432 feet (741 meters) from the nearest point of the ferry traffic lane. The water depth was 462 feet where the AMAR was deployed. The slope in the study area near the Mukilteo ferry terminal is approximately 14 degrees slope.

Background noise levels during the daytime are dominated by the presence of ferry traffic and occasional outboard motorboats and fishing vessels. Thirty-nine ferry vessels per day arrive / depart the Mukilteo ferry terminal daily during spring weekdays.

The distribution of the data is approximately log-normal however there is some variability in the daily distributions of the data (Figure 22).



Figure 21: Location of the Autonomous Multichannel Acoustic Recorder (AMAR) deployment at Mukilteo.

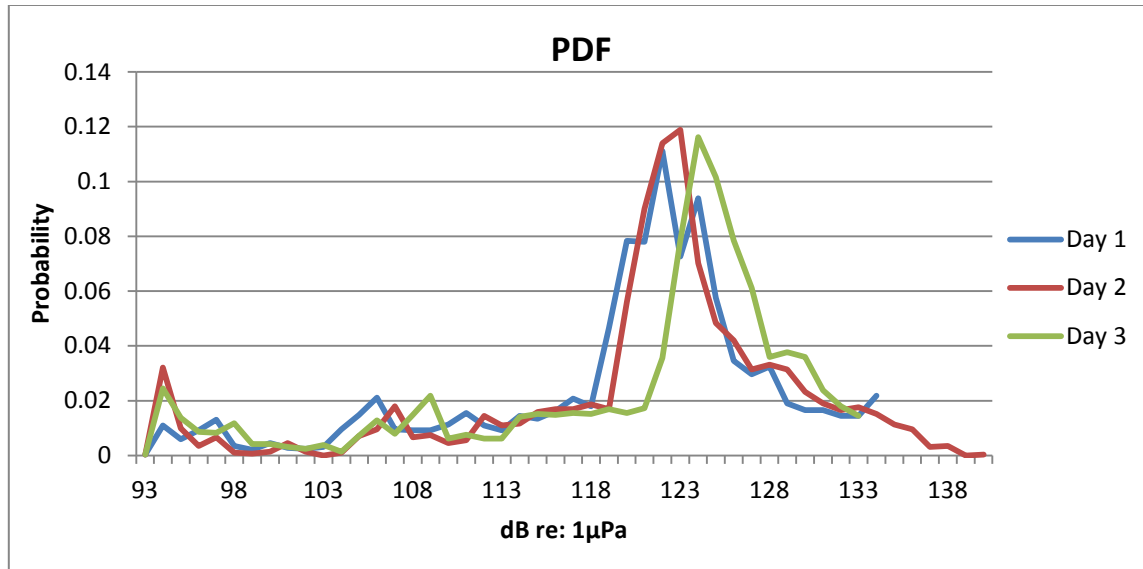


Figure 22: Probability Density Function (PDF) for the 1 Hz to 20 kHz analysis on a daily (24-hr) basis near Mukilteo.

The background sound levels for all frequencies measured between 1 Hz and 20 kHz ranged between 91 dB and 141 dB with the 50th percentile occurring at 123 dB (Figure 23). Analyses of the other functional hearing group frequency ranges are summarized in Table 7.

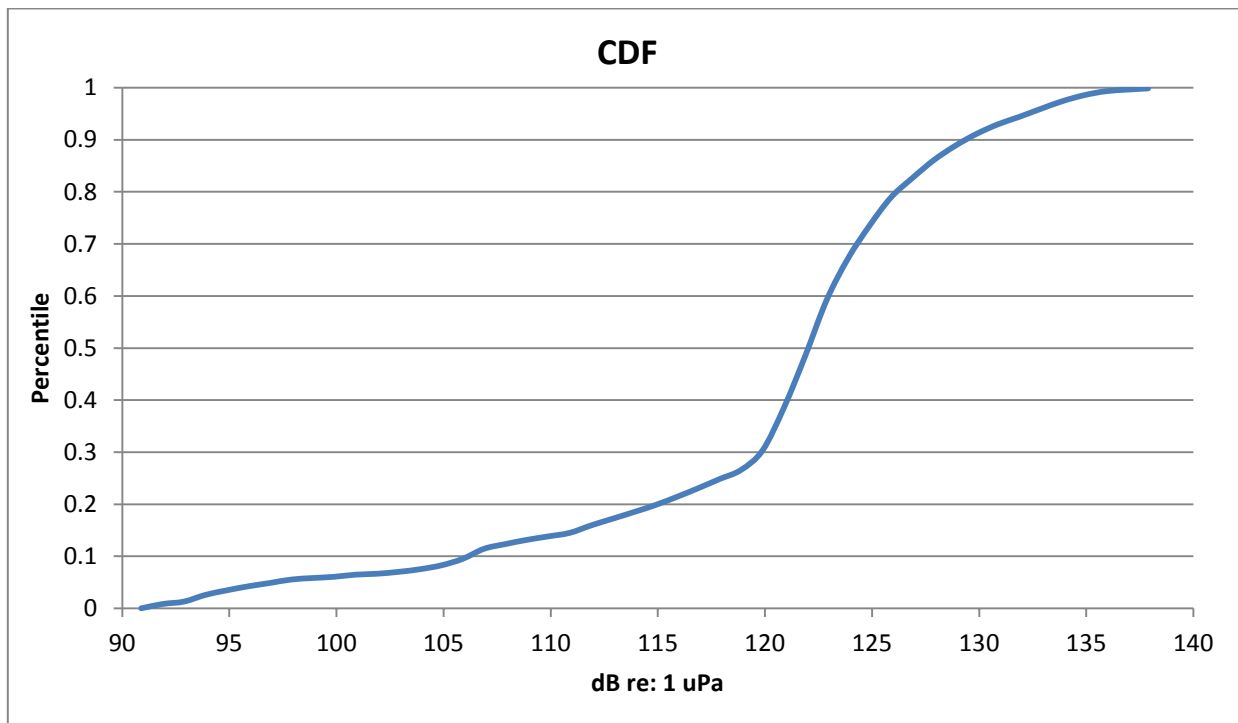


Figure 23: Cumulative Density Function (CDF) for the 1 Hz to 20 kHz analysis for all three days near Mukilteo.

Table 7: Background Sound Level Results, Mukilteo Ferry Terminal.

Frequency Range	Functional Hearing Group ¹	72-h 50% Cumulative Density Function (dB)	Daytime 50% Cumulative Density Function (dB)
7 Hz to 20 kHz	Low Frequency Cetaceans	122	124
75 Hz to 20 kHz	Phocid Pinnipeds	121	122
100 Hz to 20 kHz	Otariid Pinnipeds		
150 Hz to 20 kHz	Mid Frequency Cetaceans	121	122
200 Hz to 20 kHz	High Frequency Cetaceans	120	122
1 Hz to 20 kHz	N/A - Broadband	123	124

Figure 24 shows the overall 1/3-octave bands for the entire 72-hour recording analyzed for this report. The dominant frequency is at 63 Hz with the energy of the remaining frequencies below dropping off rapidly. These low frequency sources at 63 Hz are most likely from the ferry vessel traffic in the area and are within the typical frequencies for larger vessels.

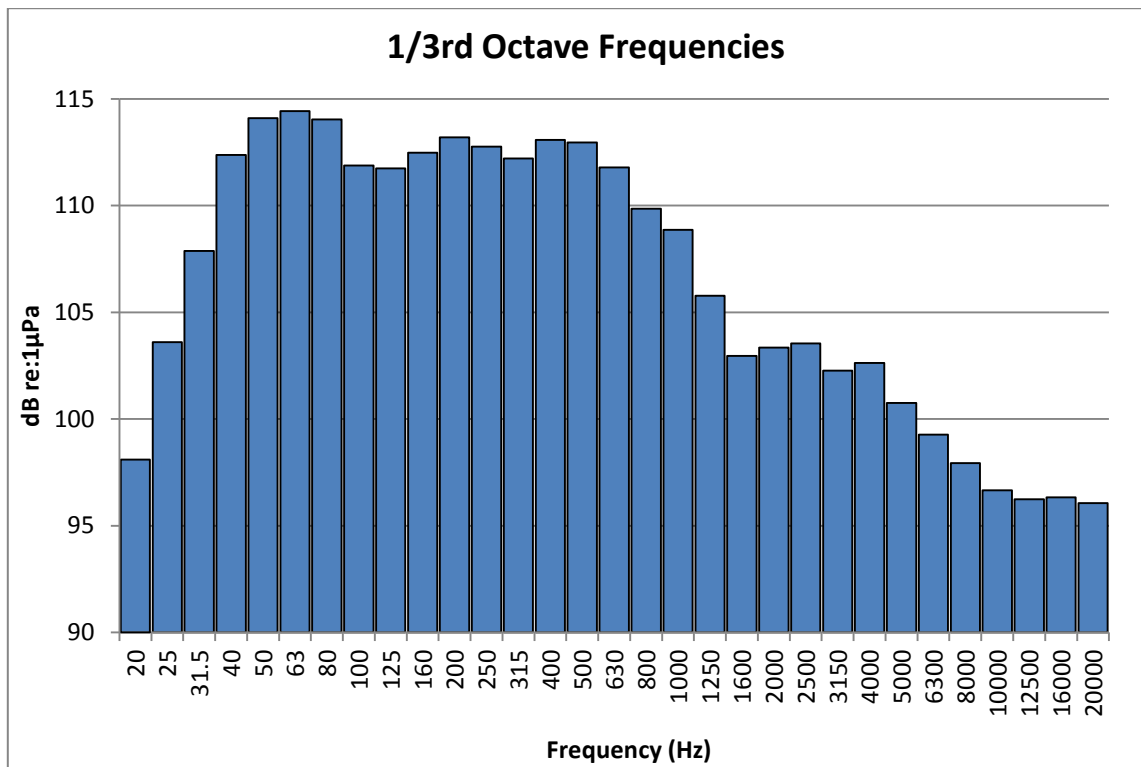


Figure 24: 1/3rd octave analysis of the broadband 20 Hz to 20 kHz frequencies for the 72-hour period near Mukilteo.

The 30-second RMS data were averaged on an hourly basis for 1 Hz to 20 kHz. These averages are plotted over time (Figure 25). Figure 25 shows that during the daytime the hourly average sound levels are relatively constant due to regular ferry traffic. The lowest sound levels recorded over this period were between about 2 AM and 3 AM each day.

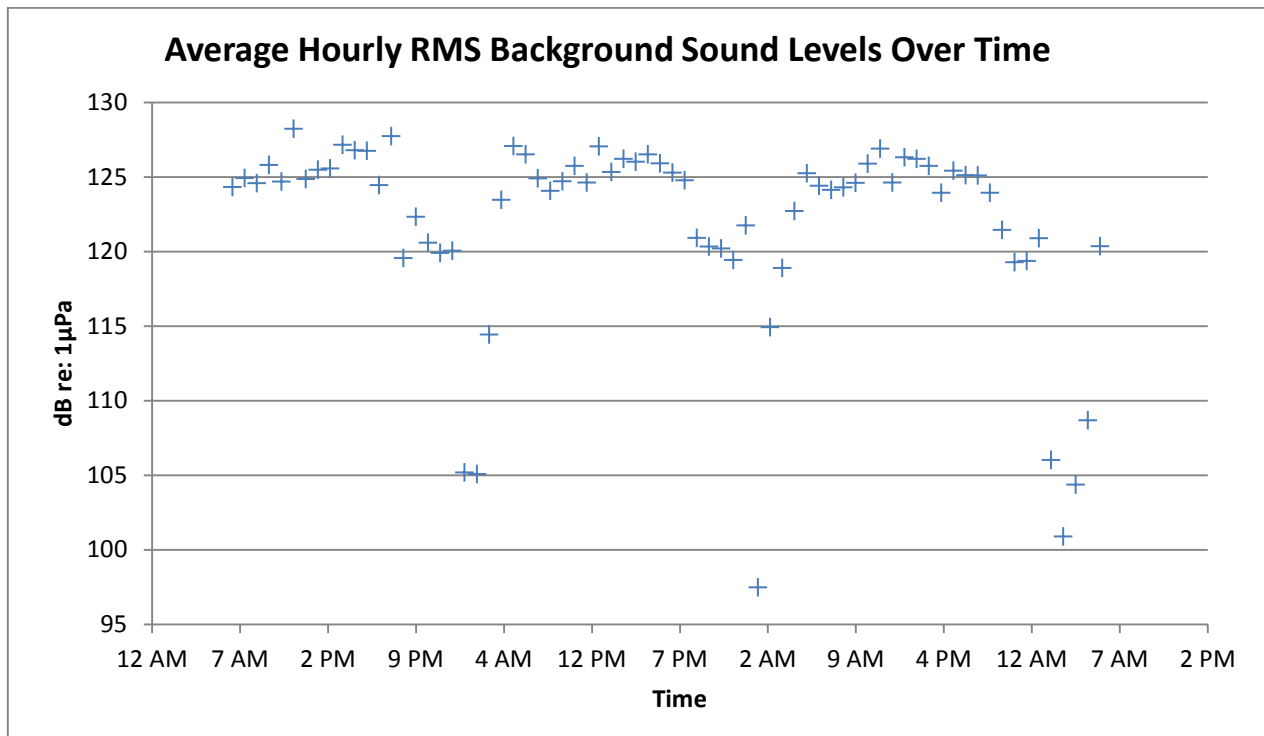


Figure 25: Average hourly background sound levels measured for a 72-hour period near the Mukilteo Ferry terminal including frequencies between 1 Hz and 20 kHz.

Background sound levels were measured near the Mukilteo ferry terminal a second time in April of 2015 to determine if the site specific underwater background sound levels had changed as a result of adding the new Tokitae vessel to the route. Three days of data were collected between April 27, 2015 and April 30, 2015 at the same location as the previous measurements (Figure 21). Three full 24-hour cycles (e.g., 6AM to 6AM) were analyzed as part of this report from 6:00 AM on Monday April 27th through 6:00 AM Thursday April 30th.

The Tokitae vessel is the first of three new Olympic Class 144-car ferry vessels that will replace the 1950's era Evergreen Class vessels. Background noise levels during the daytime are dominated by the presence of ferry traffic and occasional outboard motorboats and fishing vessels.

The distribution of the data is approximately log-normal however there is some slight variability in the daily distributions of the data (Figure 26).

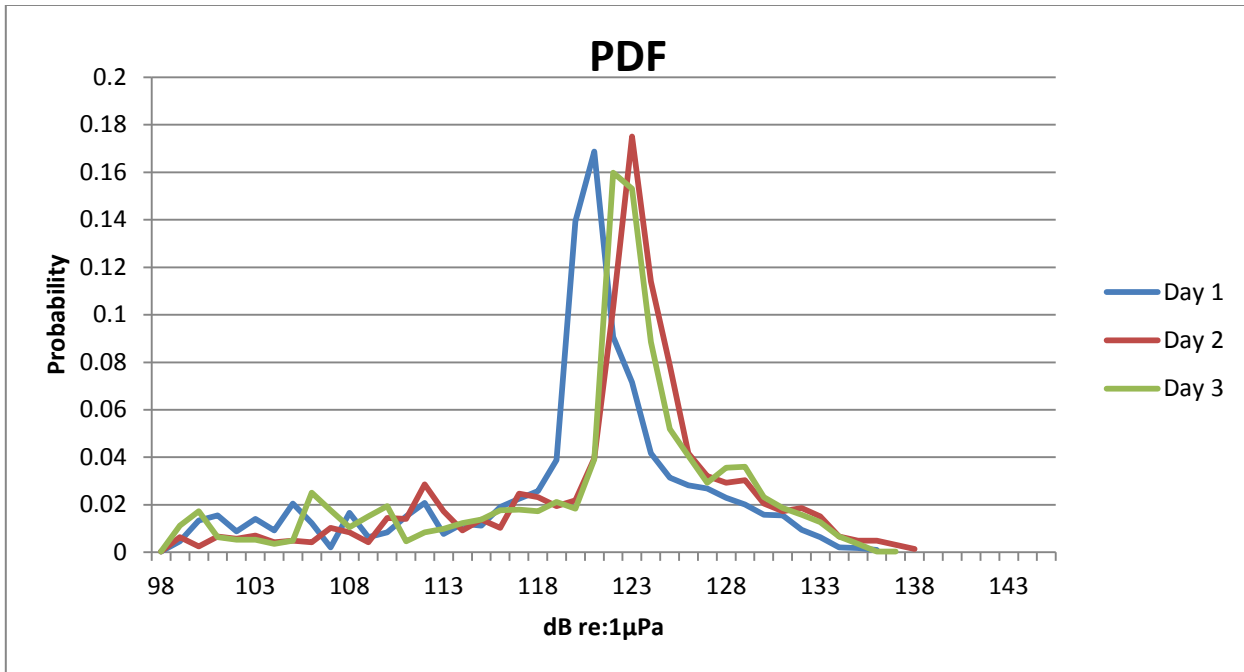


Figure 26: Probability Density Function (PDF) for the 1 Hz to 20 kHz analysis on a daily (24-hr) basis near Mukilteo (2015).

The background sound levels for all frequencies measured between 1 Hz and 20 kHz ranged between 98 dB and 141 dB with the 50th percentile occurring at 122 dB (Figure 27). Analyses of the other functional hearing group frequency ranges are summarized in Table 8.

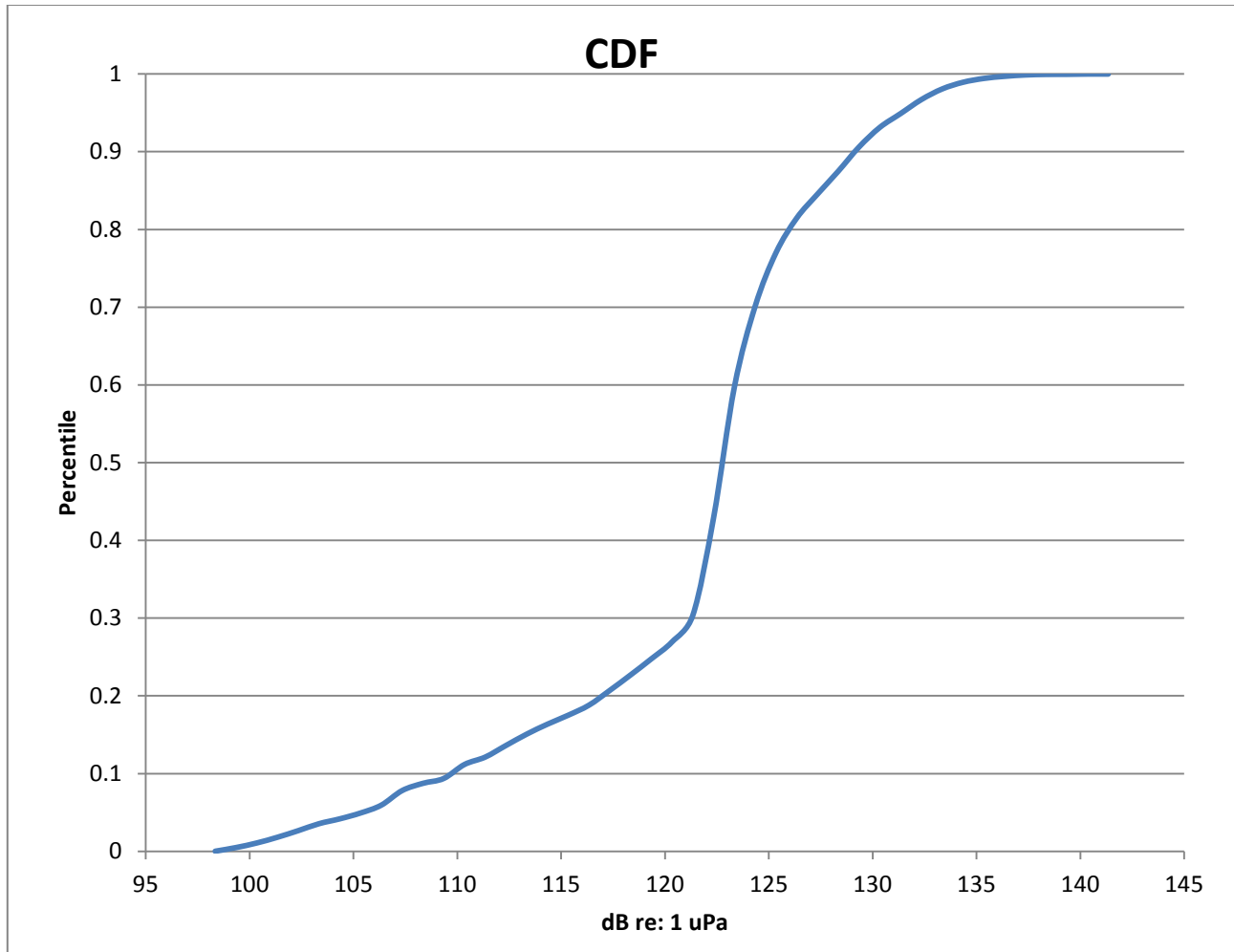


Figure 27: Cumulative Density Function (CDF) for the 1 Hz to 20 kHz analysis for all three days near Mukilteo (2015).

Table 8: Background Sound Level Results, Mukilteo Ferry Terminal.

Frequency Range	Functional Hearing Group ¹	72-h 50% Cumulative Density Function (dB)	Daytime 50% Cumulative Density Function (dB)
7 Hz to 20 kHz	Low Frequency Cetaceans	123	124
75 Hz to 20 kHz	Phocid Pinnipeds	121	121
100 Hz to 20 kHz	Otariid Pinnipeds	121	121
150 Hz to 20 kHz	Mid Frequency Cetaceans	120	121
200 Hz to 20 kHz	High Frequency Cetaceans	119	121
1 Hz to 20 kHz	N/A - Broadband	123	124

Figure 28 shows the overall 1/3-octave bands for the entire 72-hour recording analyzed for both 2011 and 2015 (before and after the Tokitae). The dominant frequency is at 63 Hz in both years

with the energy of the remaining frequencies below dropping off rapidly. These low frequency sources at 63 Hz are most likely from the ferry vessel traffic in the area and are within the typical frequencies for larger vessels. With the exception of the lowest frequencies and around 2000 Hz all of the frequencies in 2015 are lower than they were in 2011. This could be attributed to the improved noise reduction features of the Tokitae.

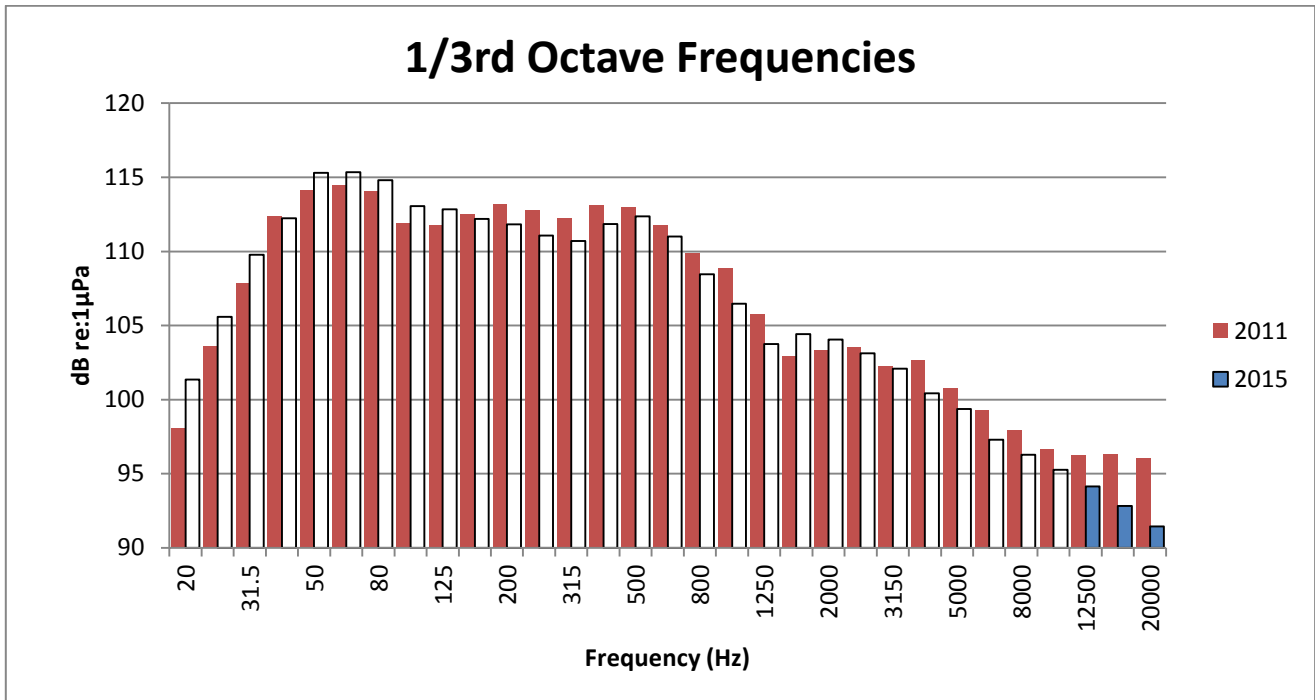


Figure 28: 1/3rd octave analysis of the broadband 20 Hz to 20 kHz frequencies for the 72-hour period near Mukilteo (2015).

The Evergreen Class Klikitat vessel and Olympic Class Tokitae vessel data was extracted using 5 minute recordings during their respective arrivals at the Mukilteo terminal for a 21 hour period (Figure 29). The Tokitae was up to 5 dB quieter than the Klikitat vessel during the same time period. The average RMS sound level for the Klikitat vessel over this time period was 130 dB and the average for the Tokitae was 125 dB.

A 1/3rd Octave analysis was performed on the data showing the frequency content of the two vessels (Figure 30). The frequency content of the Tokitae was lower overall compared to the Klikitat.

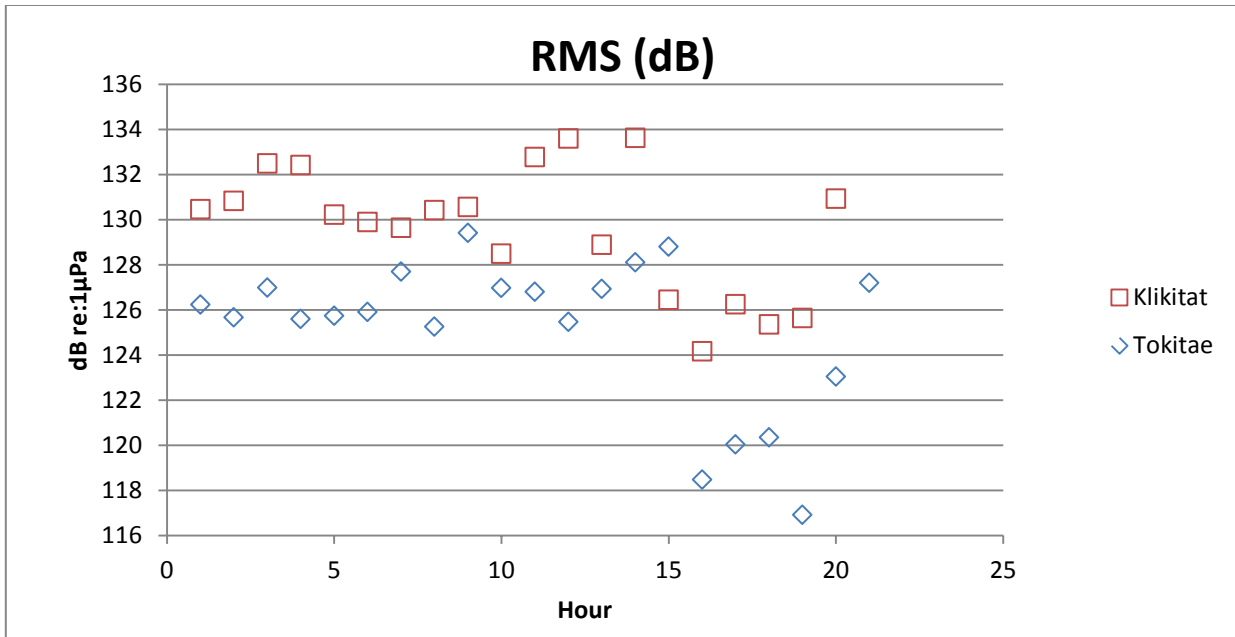


Figure 29: Average RMS sound levels for Klikitat vs. Tokitae vessel during each arrival at Mukilteo (2015) during a 21 hour period.

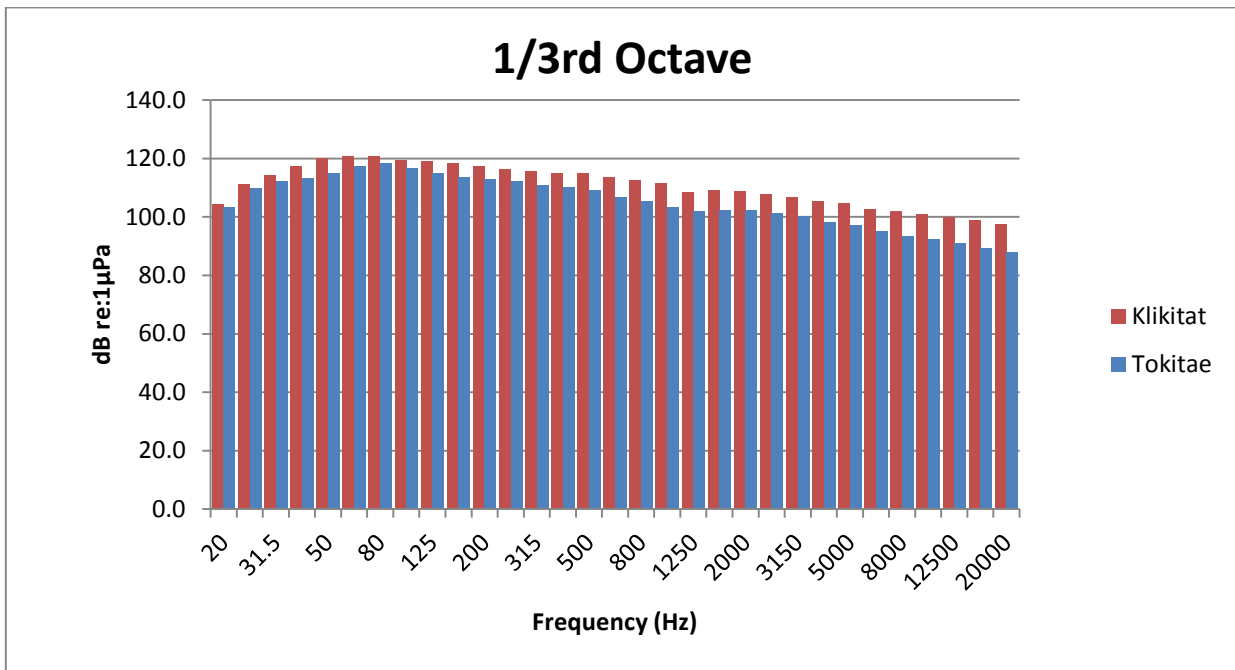


Figure 30: 1/3rd Octave analysis showing the frequency content of the two vessels during their approach at Mukilteo (2015) during a 21 hour period.

Although the overall background sound levels did not show any changes with the addition of the newer Olympic Class Tokitae vessel, most likely due to the effects of other larger vessels measured during the 3 day period, the Tokitae does appear to be slightly quieter overall when compared to the Klikitat.

Kingston Ferry Terminal

Background sound levels were measured near the Kingston ferry terminal in an effort to determine site specific underwater background sound levels. Seven days of data were collected between November 19, 2012 and November 26, 2012 near the Kingston ferry terminal (Figure 31). Three full 24-hour cycles (e.g., 6AM to 6AM) were analyzed as part of this report from 6:10 AM on Tuesday November 20th through 5:40 PM Thursday November 22nd.

The AMAR was deployed in approximately 160 feet of water and 2,712 feet from the Kingston ferry terminal, 3,204 feet from the nearest point of the ferry traffic lane. The slope in the study area near the Kingston ferry terminal is approximately 0.06 degrees slope.

Background sound levels during the daytime are dominated by the presence of ferry traffic, cargo ships and occasional outboard motorboats and fishing vessels. Forty six ferry vessels per day arrive / depart the Kingston ferry terminal daily during fall weekdays.

The distribution of the data is approximately log-normal however there is some variability in the daily distributions of the data, especially day 2 (Figure 32).



Figure 31: Location of the Autonomous Multichannel Acoustic Recorder (AMAR) deployment at Kingston.

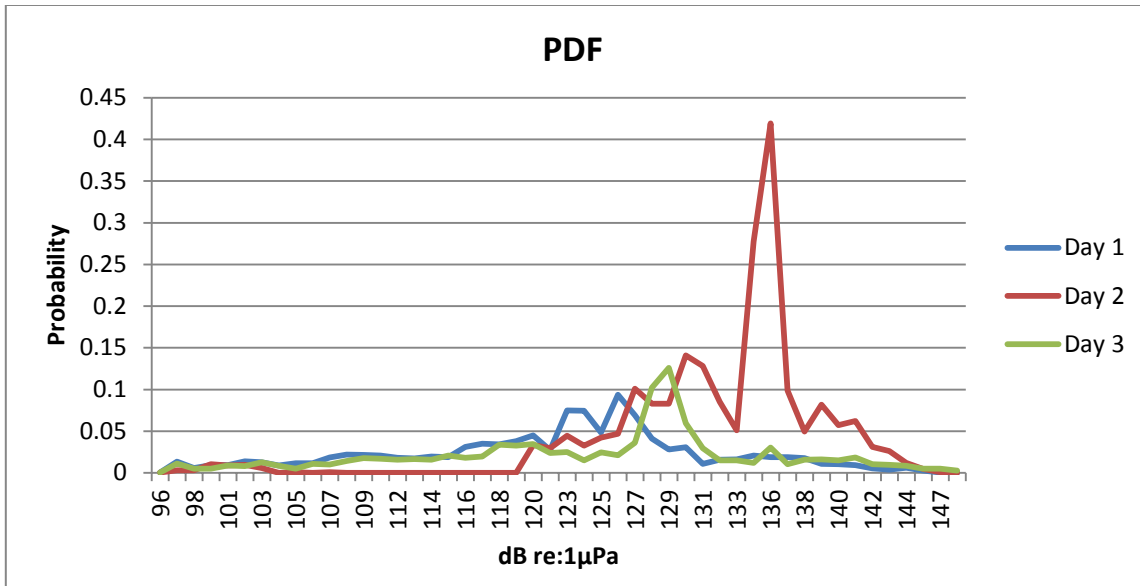


Figure 32: Probability Density Function (PDF) for the 1 Hz to 20 kHz analysis on a daily (24-hr) basis near Kingston.

The background sound levels for all frequencies measured between 1 Hz and 20 kHz ranged between 96 dB and 146 dB with the 50th percentile occurring at 124 dB (Figure 33). Analyses of the other functional hearing group frequency ranges are summarized in Table 9.

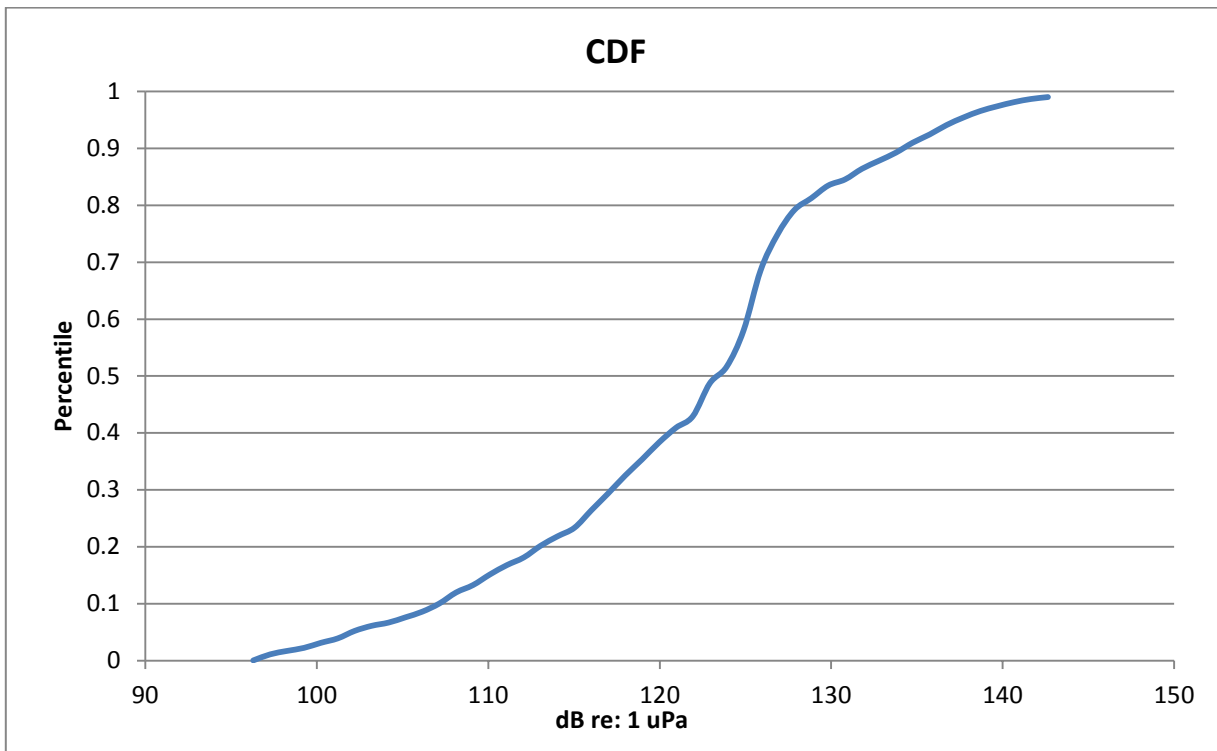


Figure 33: Cumulative Density Function (CDF) for the 1 Hz to 20 kHz analysis for all three days near Kingston.

Table 9: Background Sound Level Results, Kingston Ferry Terminal.

Frequency Range	Functional Hearing Group ¹	72-h 50% Cumulative Density Function (dB)	Daytime 50% Cumulative Density Function (dB)
7 Hz to 20 kHz	Low Frequency Cetaceans	124	126
75 Hz to 20 kHz	Phocid Pinnipeds	123	126
100 Hz to 20 kHz	Otariid Pinnipeds		
150 Hz to 20 kHz	Mid Frequency Cetaceans	120	122
200 Hz to 20 kHz	High Frequency Cetaceans	118	120
1 Hz to 20 kHz	N/A - Broadband	124	126

Figure 34 shows the overall 1/3-octave bands for the entire 72-hour recording analyzed for this report. AMAR was not capable of collecting all frequencies in one channel. For that reason, the 1/3rd Octave frequencies are plotted only up to 5 kHz but still capture the dominant frequencies. The dominant frequency is between 63 Hz and 80 Hz with the energy of the remaining frequencies below dropping off gradually. These low frequency sources between 63 Hz and 80 Hz are most likely from the ferry vessel traffic in the area and are within the typical frequencies for larger vessels.

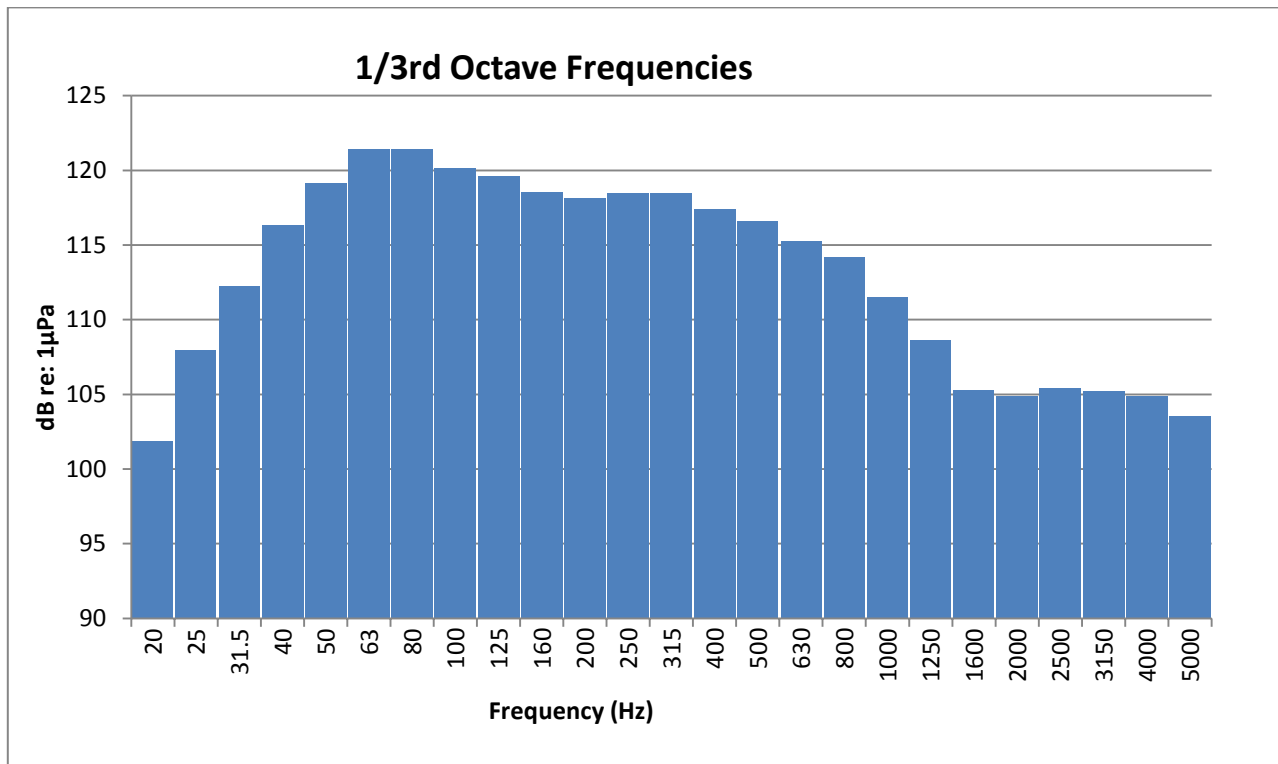


Figure 34: 1/3rd octave analysis of the broadband 1 Hz to 5 kHz frequencies for the 72-hour period near Kingston.

The 30-second RMS data were averaged on an hourly basis for 1 Hz to 20 kHz. These averages are plotted over time (Figure 35). Figure 35 shows that during the daytime the hourly average sound levels are relatively constant due to regular ferry traffic. The lowest sound levels recorded over this period at about 2 AM each day.

The Kingston terminal sound levels compared with the Edmonds terminal sound levels showed that the Kingston levels were 1 to 2 dB higher than for Edmonds during the 72-hour period and 2 to 5 dB higher at Kingston during the daytime hours. This is likely due to the slightly closer proximity of Kingston to the shipping lanes since both terminals share the same number of ferry vessel arrivals and departures and measurements were collected about one month apart.

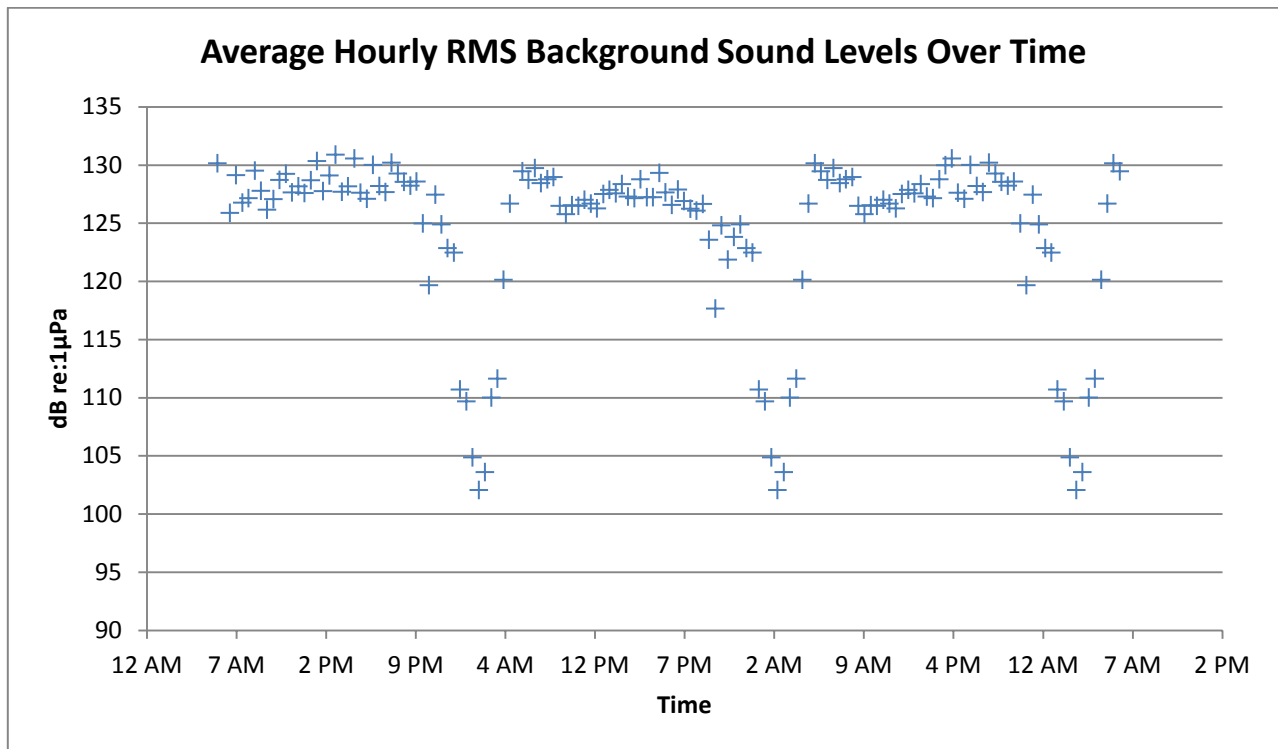


Figure 35: Average hourly background sound levels measured for a 72-hour period near the Kingston Ferry terminal including frequencies between 1 Hz and 20 kHz.

Vashon Ferry Terminal

Background sound levels were measured near the Vashon ferry terminal in an effort to determine site specific underwater background sound levels. Six days of data were collected between October 8 and 14, 2013 near the Vashon ferry terminal (Figure 36). Three full 24-hour cycles (e.g., 6AM to 6AM) were analyzed as part of this report from 5:57 AM on Wednesday October 9th through 5:57 AM Saturday October 12th.

The AMAR was deployed in approximately 125 feet of water, 3,700 feet from the Vashon ferry terminal and 800 feet from the nearest point of the ferry traffic lane. The slope in the study area near the Vashon ferry terminal is approximately 17 degrees slope.

Background sound levels during the daytime are dominated by the presence of ferry traffic and occasional outboard motorboats and fishing vessels. Fifty-four ferry vessels per day arrive / depart the Vashon ferry terminal daily during fall weekdays plus an additional six King County water taxis per day.

The distribution of the data is approximately log-normal with little variability in the daily distributions of the data over the three days (Figure 37).



Figure 36: Location of the Autonomous Multichannel Acoustic Recorder (AMAR) deployment at Vashon Island.

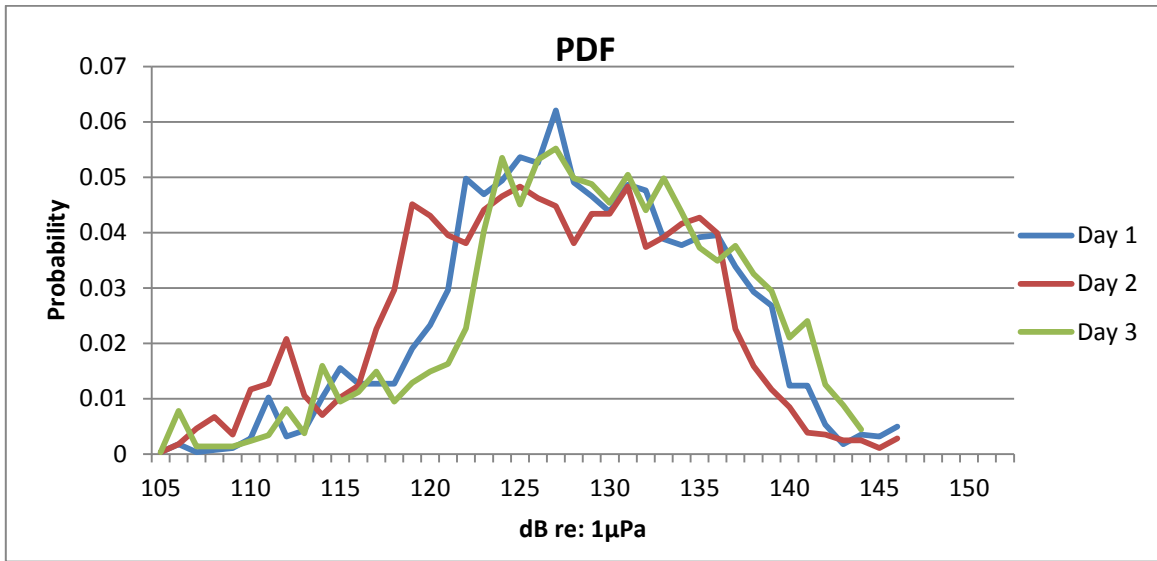


Figure 37: Probability Density Function (PDF) for the 1 Hz to 20 kHz analysis on a daily (24-hr) basis near Vashon.

The background sound levels for all frequencies measured between 1 Hz and 20 kHz ranged between 102 dB and 149 dB with the 50th percentile occurring at 126 dB (Figure 38). Analyses of the other functional hearing group frequency ranges are summarized in Table 10.

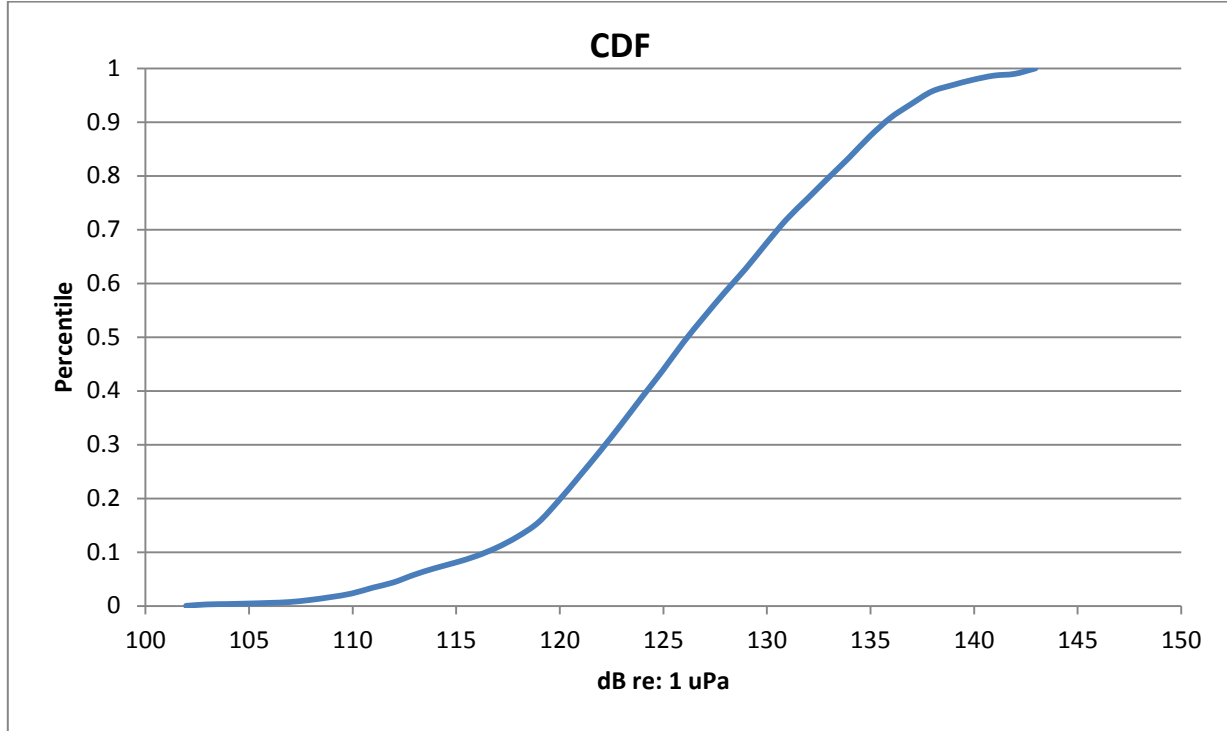


Figure 38: Cumulative Density Function (CDF) for the 1 Hz to 20 kHz analysis for all three days near Vashon Island.

Table 10: Background Sound Level Results, Vashon Ferry Terminal.

Frequency Range	Functional Hearing Group ¹	72-h 50% Cumulative Density Function (dB)	Daytime 50% Cumulative Density Function (dB)
7 Hz to 20 kHz	Low Frequency Cetaceans	126	128
75 Hz to 20 kHz	Phocid Pinnipeds	123	125
100 Hz to 20 kHz	Otariid Pinnipeds	-	-
150 Hz to 20 kHz	Mid Frequency Cetaceans	120	122
200 Hz to 20 kHz	High Frequency Cetaceans	119	121
1 Hz to 20 kHz	N/A - Broadband	126	128

Figure 39 shows the overall 1/3-octave bands for the entire 72-hour recording analyzed for this report. The dominant frequency is 63 Hz with the energy of the remaining frequencies below dropping off gradually. This low frequency source at 63 Hz are most likely from the ferry vessel traffic in the area and are within the typical frequencies for larger vessels.

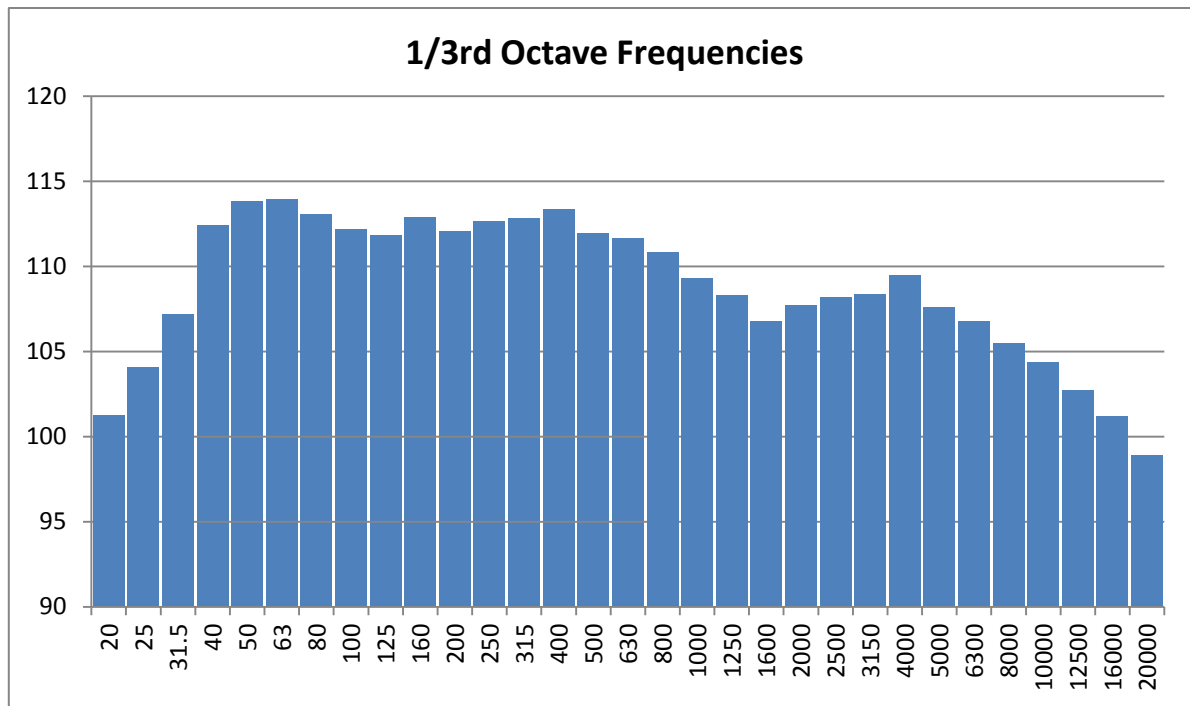


Figure 39: 1/3rd octave analysis of the broadband 1 Hz to 20 kHz frequencies for the 72-hour period near Vashon.

The 30-second RMS data were averaged on an hourly basis for 1 Hz to 20 kHz. These averages are plotted over time (Figure 40). Figure 40 shows that during the daytime the hourly average sound levels are relatively constant due to regular ferry traffic. The lowest sound levels recorded over this period at about 2 AM to 3 AM each day.

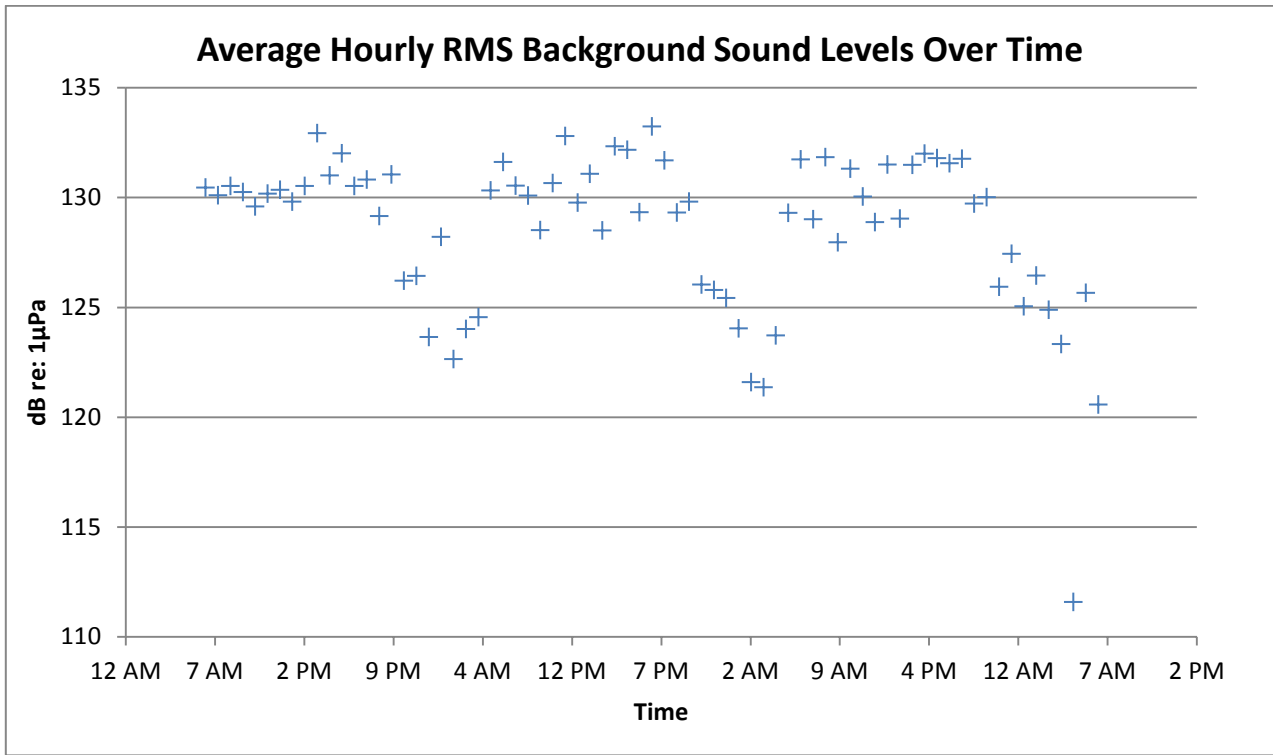


Figure 40: Average hourly background sound levels measured for a 72-hour period near the Vashon Ferry terminal including frequencies between 1 Hz and 20 kHz.

Southworth Ferry Terminal

Background sound levels were measured near the Southworth ferry terminal in an effort to determine site specific underwater background sound levels. Three days of data were collected between February 10 and 13, 2014 near the Southworth ferry terminal (Figure 41). Three full 24-hour cycles (e.g., 8AM to 8AM) were analyzed as part of this report from 8:00 AM on Monday February 10th through 8:00 AM Thursday February 13th.

The AMAR was deployed in approximately 1,000 feet of water and 3,300 feet from the Southworth ferry terminal, 90 feet from the nearest point of the Fauntleroy ferry traffic lane. The slope in the study area near the Vashon ferry terminal is approximately 7 degrees slope.

Background noise levels during the daytime are dominated by the presence of ferry traffic and occasional outboard motorboats and fishing vessels. Forty-nine ferry vessels per day arrive / depart the Southworth ferry terminal daily during winter weekdays.

The distribution of the data is approximately log-normal with little variability in the daily distributions of the data over the three days (Figure 42).

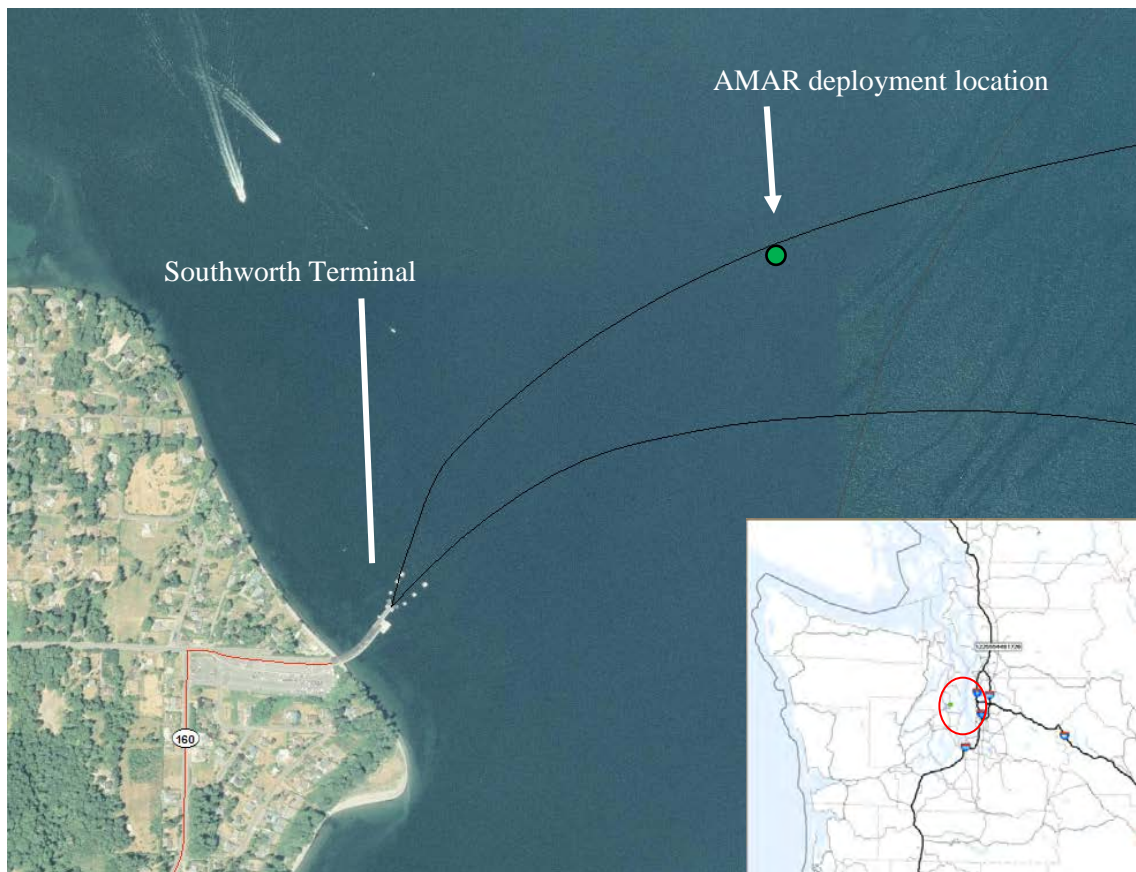


Figure 41: Location of the Autonomous Multichannel Acoustic Recorder (AMAR) deployment at Southworth.

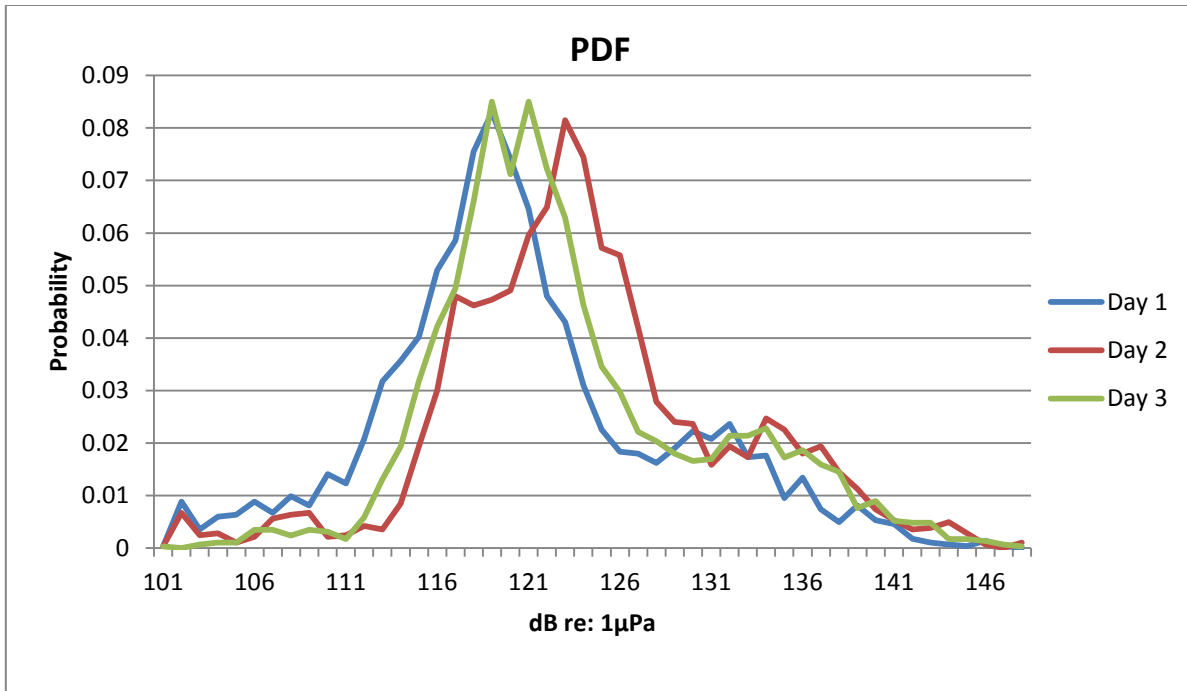


Figure 42: Probability Density Function (PDF) for the 1 Hz to 20 kHz analysis on a daily (24-hr) basis near Southworth.

The background sound levels for all frequencies measured between 1 Hz and 20 kHz ranged between 101 dB and 148 dB with the 50th percentile occurring at 123 dB (Figure 43). Analyses of the other functional hearing group frequency ranges are summarized in Table 11.

The Southworth ferry terminal is just west of the Vashon ferry terminal and the Vashon terminal background levels were 3 to 5 dB higher overall and 3 to 4 dB higher in the daytime than at Southworth. There were 5 additional ferry vessels arriving/departing at Vashon than at Southworth and the Vashon terminal was closer to the normal shipping lanes which could have contributed to the higher background sound levels.

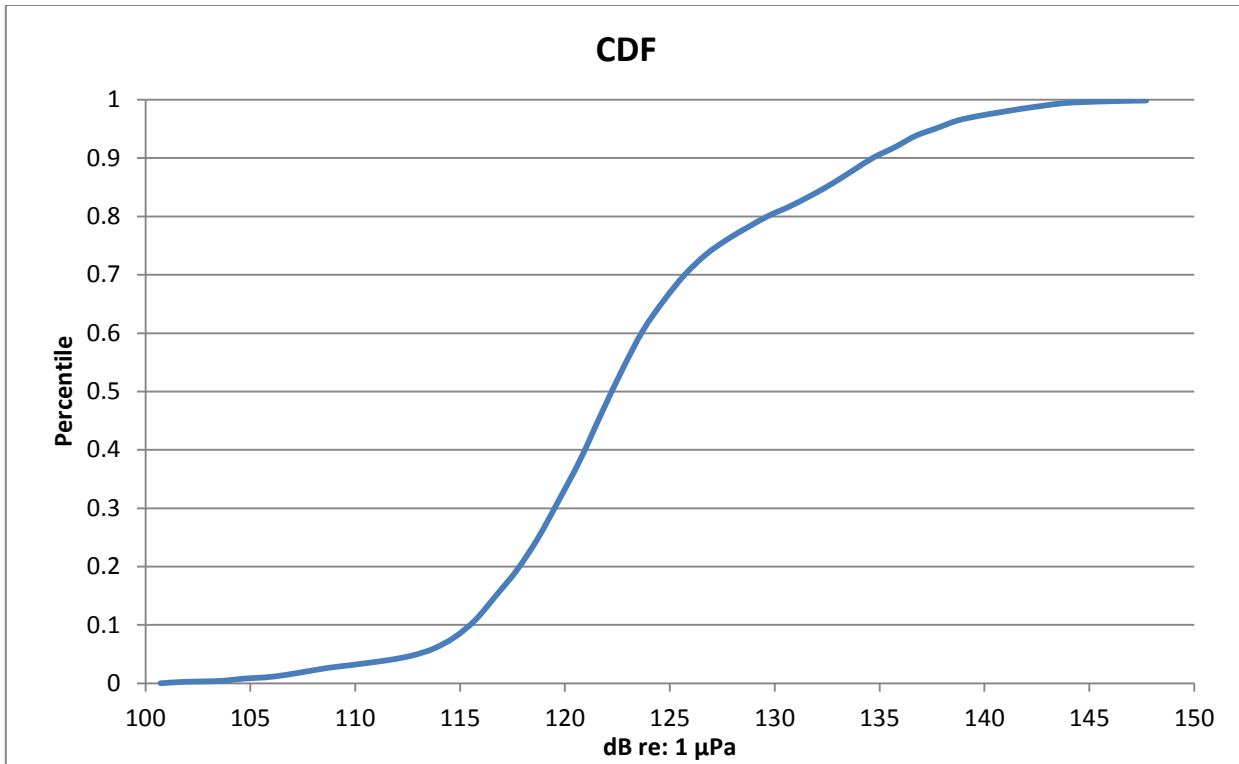


Figure 43: Cumulative Density Function (CDF) for the 1 Hz to 20 kHz analysis for all three days near Southworth.

Table 11: Background Sound Level Results, Southworth Ferry Terminal.

Frequency Range	Functional Hearing Group ¹	72-h 50% Cumulative Density Function (dB)	Daytime 50% Cumulative Density Function (dB)
7 Hz to 20 kHz	Low Frequency Cetaceans	121	123
75 Hz to 20 kHz	Phocid Pinnipeds	118	121
100 Hz to 20 kHz	Otariid Pinnipeds	118	118
150 Hz to 20 kHz	Mid Frequency Cetaceans	117	118
200 Hz to 20 kHz	High Frequency Cetaceans	116	117
1 Hz to 20 kHz	N/A - Broadband	123	124

Figure 44 shows the overall 1/3-octave bands for the entire 72-hour recording analyzed for this report. The dominant frequency is 50 Hz with the energy of the remaining frequencies below dropping off gradually. These low frequency sources at 50 Hz are most likely from the ferry vessel traffic in the area and are within the typical frequencies for larger vessels.

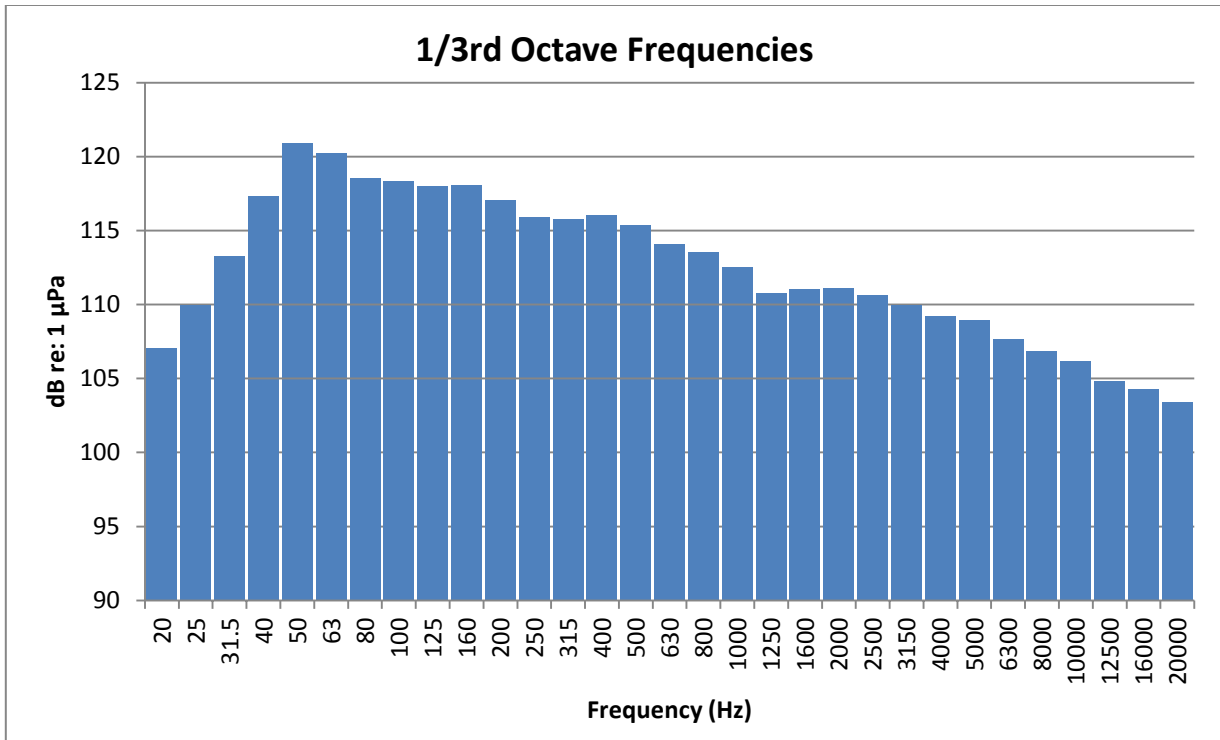


Figure 44: 1/3rd octave analysis of the broadband 1 Hz to 5 kHz frequencies for the 72-hour period near Southworth.

The 30-second RMS data were averaged on an hourly basis for 1 Hz to 20 kHz. These averages are plotted over time (Figure 45). Figure 45 shows that during the daytime the hourly average sound levels are relatively constant due to regular ferry traffic. The lowest sound levels recorded over this period between midnight and 2 AM each day.

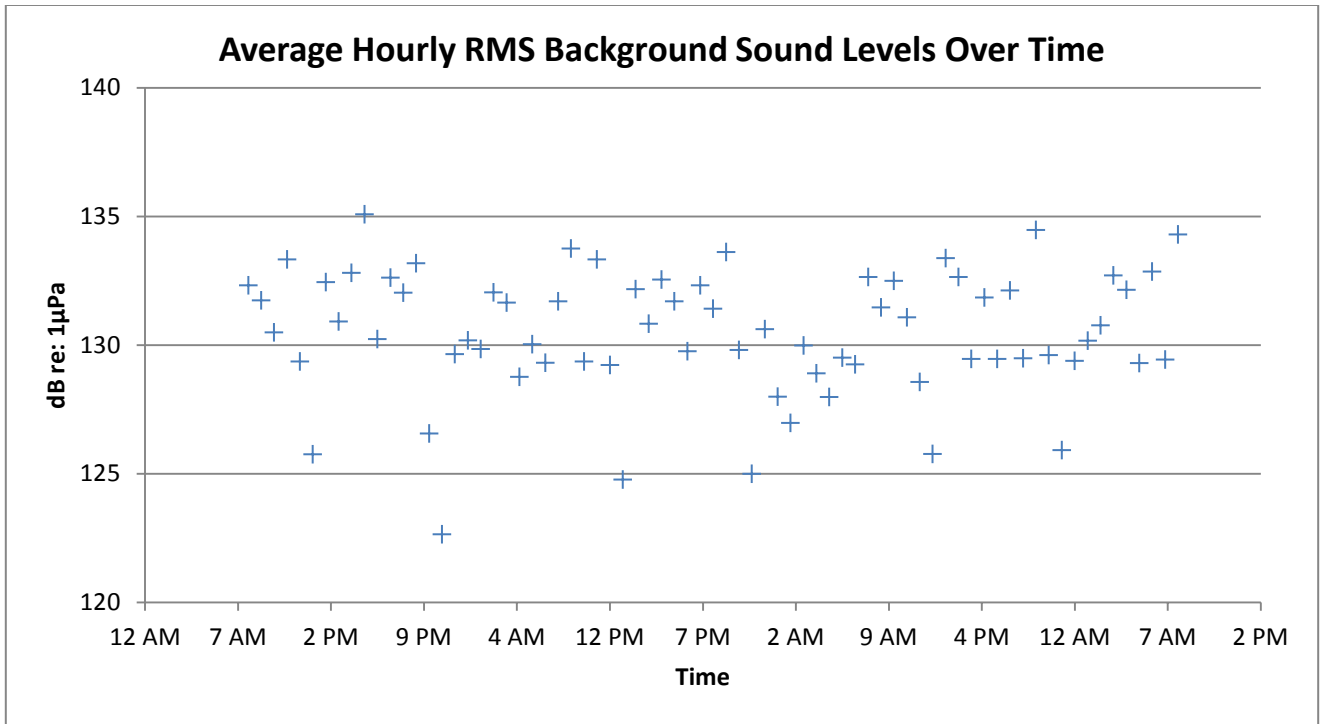


Figure 45: Average hourly background sound levels measured for a 72-hour period near the Southworth Ferry terminal including frequencies between 1 Hz and 20 kHz.

Coupeville (Keystone) Ferry Terminal

Background sound levels were measured near the Coupeville (Keystone) ferry terminal in an effort to determine site specific underwater background sound levels. Seven days of data were collected between February 24 and March 3, 2014 near the Coupeville ferry terminal (Figure 46). Three full 24-hour cycles (e.g., 6AM to 6AM) were analyzed as part of this report from 6:25 AM on Tuesday February 25th through 6:25 AM Friday February 28th.

The AMAR was deployed in approximately 180 feet of water and 3,200 feet from the Coupeville ferry terminal, 245 feet from the nearest point of the ferry traffic lane. The slope in the study area near the Coupeville ferry terminal is approximately 33 degrees slope.

Background noise levels during the daytime are dominated by the presence of ferry traffic and cargo ships. Ten ferry vessels per day arrive / depart the Coupeville ferry terminal daily during winter weekdays.

The distribution of the data is approximately log-normal with little variability in the daily distributions of the data over the three days (Figure 47).

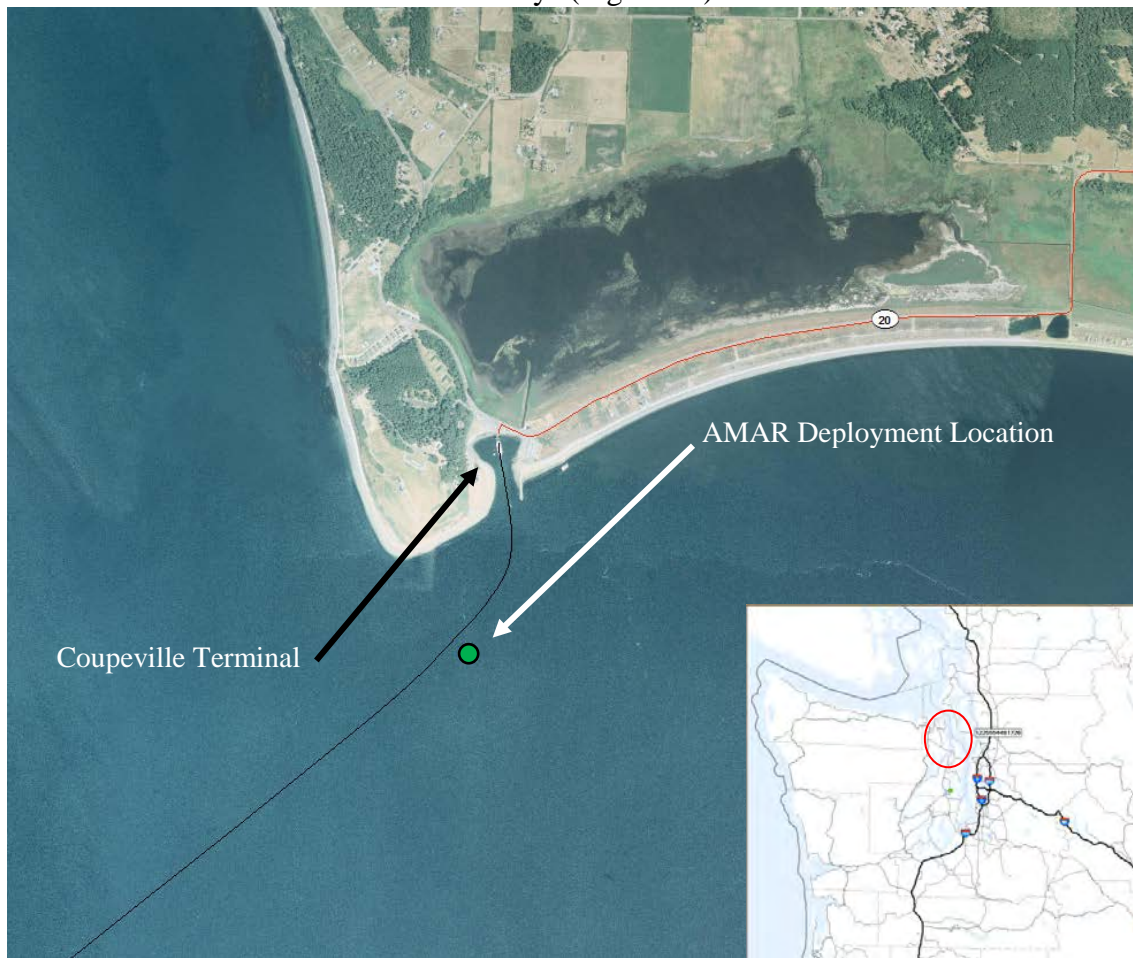


Figure 46: Location of the Autonomous Multichannel Acoustic Recorder (AMAR) deployment at Coupeville.

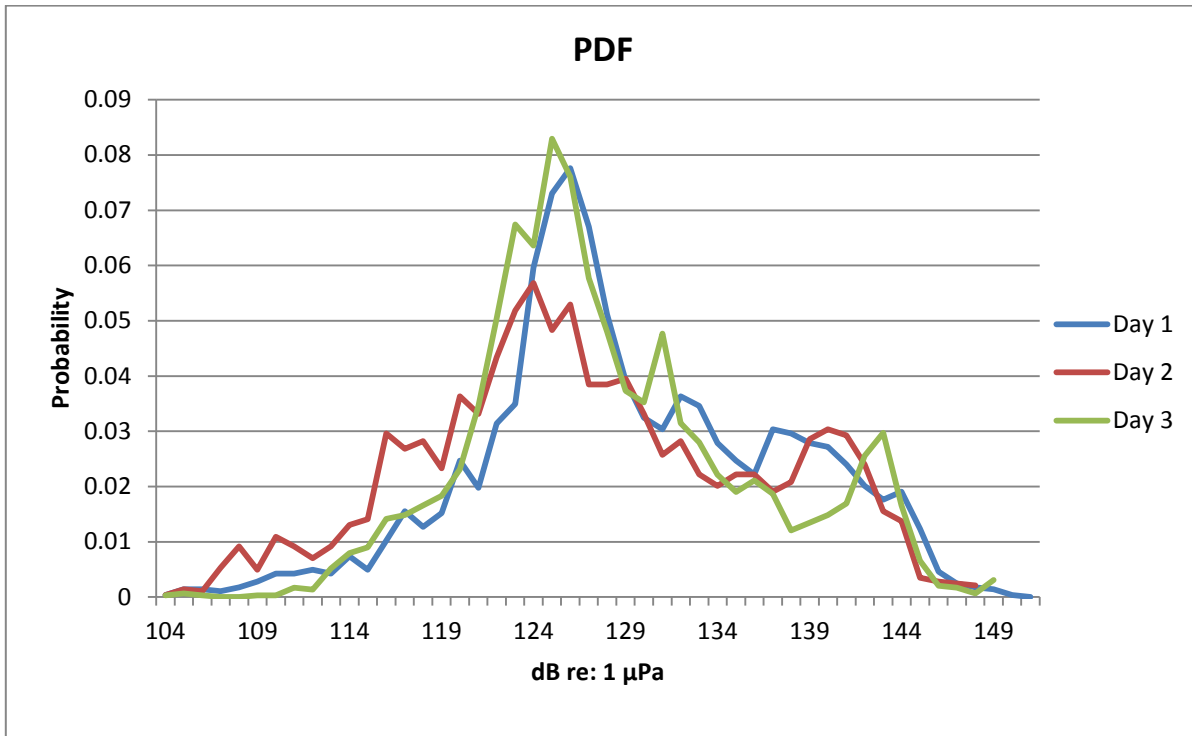


Figure 47: Probability Density Function (PDF) for the 1 Hz to 20 kHz analysis on a daily (24-hr) basis near Coupeville.

The background sound levels for all frequencies measured between 1 Hz and 20 kHz ranged between 101 dB and 148 dB with the 50th percentile occurring at 125 dB (Figure 48). Analyses of the other functional hearing group frequency ranges are summarized in Table 12.

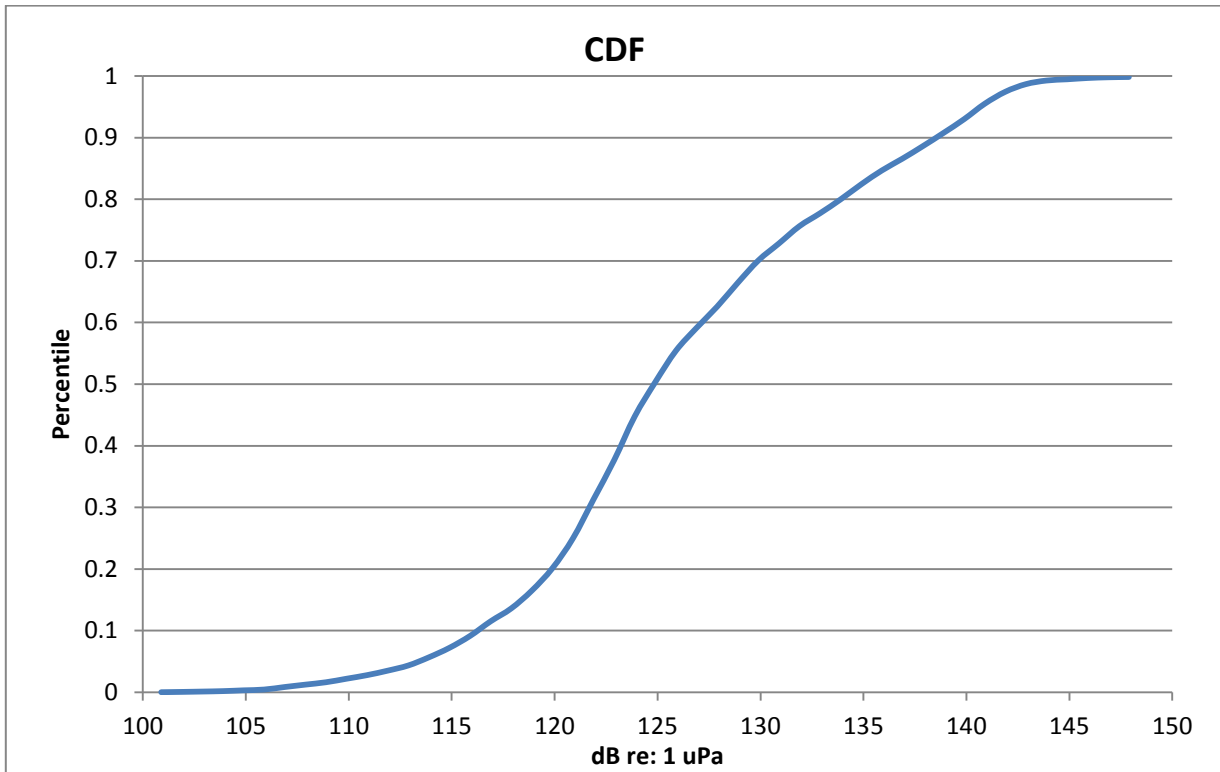


Figure 48: Cumulative Density Function (CDF) for the 1 Hz to 20 kHz analysis for all three days near Coupeville.

Table 12: Background Sound Level Results, Coupeville Ferry Terminal.

Frequency Range	Functional Hearing Group ¹	72-h 50% Cumulative Density Function (dB)	Daytime 50% Cumulative Density Function (dB)
7 Hz to 20 kHz	Low Frequency Cetaceans	122	124
75 Hz to 20 kHz	Phocid Pinnipeds	116	119
100 Hz to 20 kHz	Otariid Pinnipeds	116	119
150 Hz to 20 kHz	Mid Frequency Cetaceans	114	118
200 Hz to 20 kHz	High Frequency Cetaceans	113	117
1 Hz to 20 kHz	N/A - Broadband	125	125

Figure 49 shows the overall 1/3-octave bands for the entire 72-hour recording analyzed for this report. The dominant frequency is at 63 Hz with the energy of the remaining frequencies below dropping off gradually. These low frequency sources of 63 Hz are most likely from the ferry vessel traffic in the area and are within the typical frequencies for larger vessels.

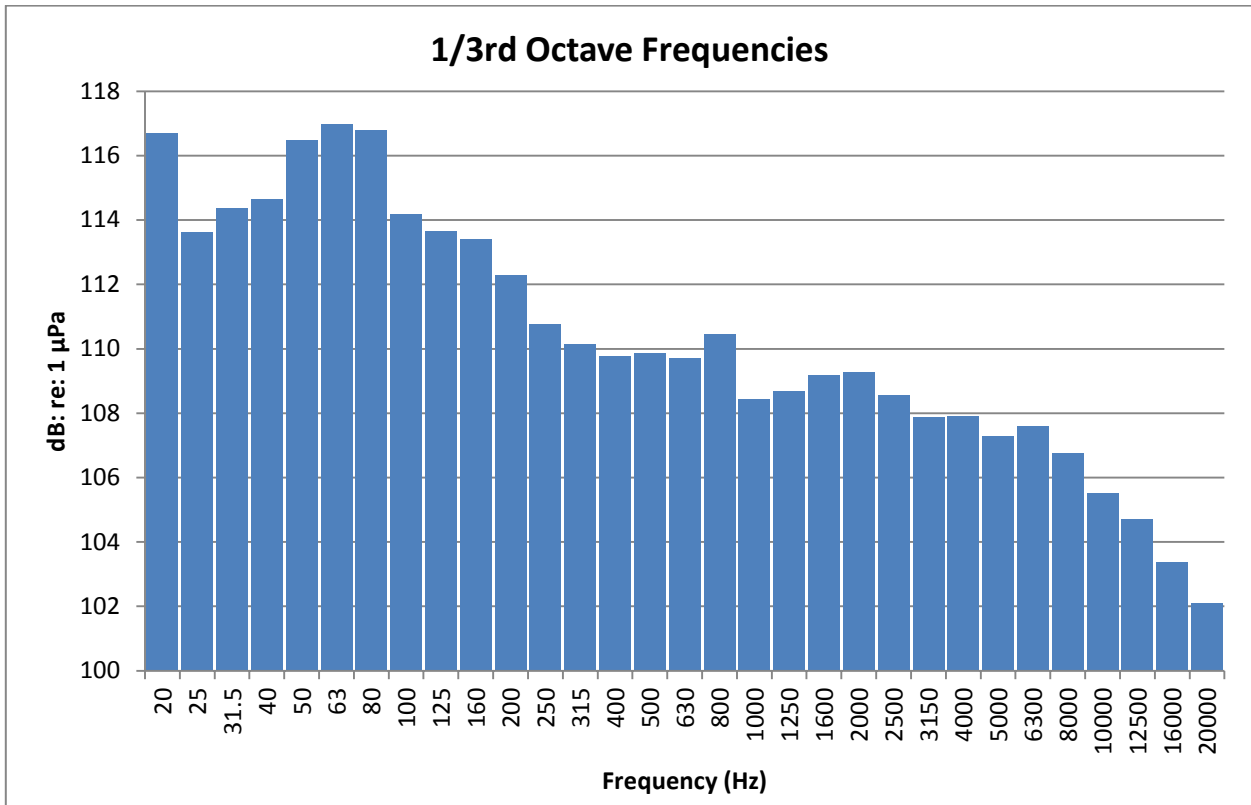


Figure 49: 1/3rd octave analysis of the broadband 1 Hz to 5 kHz frequencies for the 72-hour period near Coupeville.

The 30-second RMS data were averaged on an hourly basis for 1 Hz to 20 kHz. These averages are plotted over time (Figure 50). Figure 50 shows that during the daytime the hourly average sound levels are relatively constant due to regular ferry traffic. The lowest sound levels recorded over this period at about 2 AM each day.

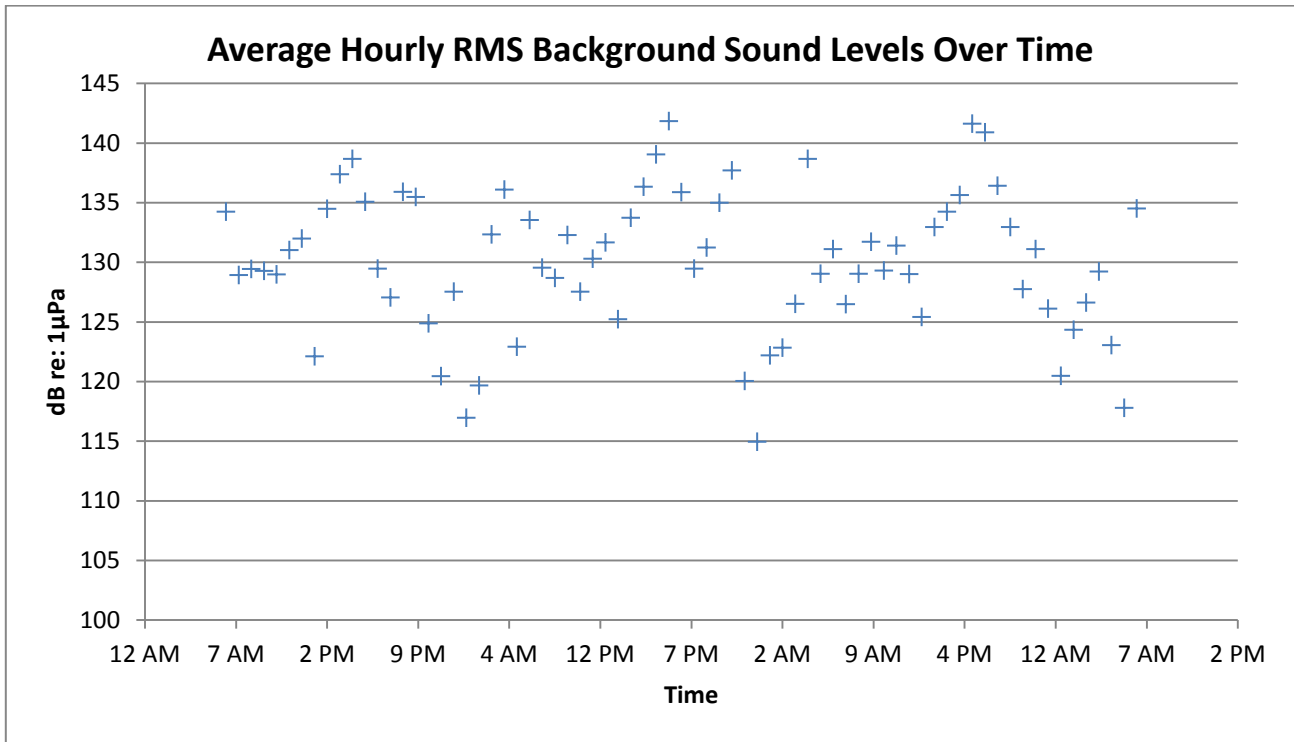


Figure 50: Average hourly background sound levels measured for a 72-hour period near the Coupeville Ferry terminal including frequencies between 1 Hz and 20 kHz.

Background Sound Levels vs. Number of Ferry Vessels

The background sound levels are dominated by ferry vessels traveling to and from the terminal as well as some cargo ships. We looked to see if there was any correlation between the number of ferry vessels traveling to and from a particular terminal and the background sound level, both overall and daytime only. Figure 51 shows the correlation between broadband sound level and number of ferry vessels arriving/departing each day during the measurement period for each terminal for the full three day period.

Figure 51 indicates that with the exception of those locations where the number of ferry vessels drops to around 10 per day the difference in sound levels vary by only about 3 to 4 dB regardless of the number of ferry vessels. Those terminals which have a relatively low number of vessels arriving/departing are more variable and could be more influenced by the other sources in the area such as cargo ships, fishing vessels and pleasure boats. Results at all terminals could also be influenced by their relative proximity to the major shipping lanes.

The daytime only results showed similar trends. Without excluding the other sources in the area from the results it is not possible to predict what the sound levels will be based only on the number of ferry vessels arriving and departing.

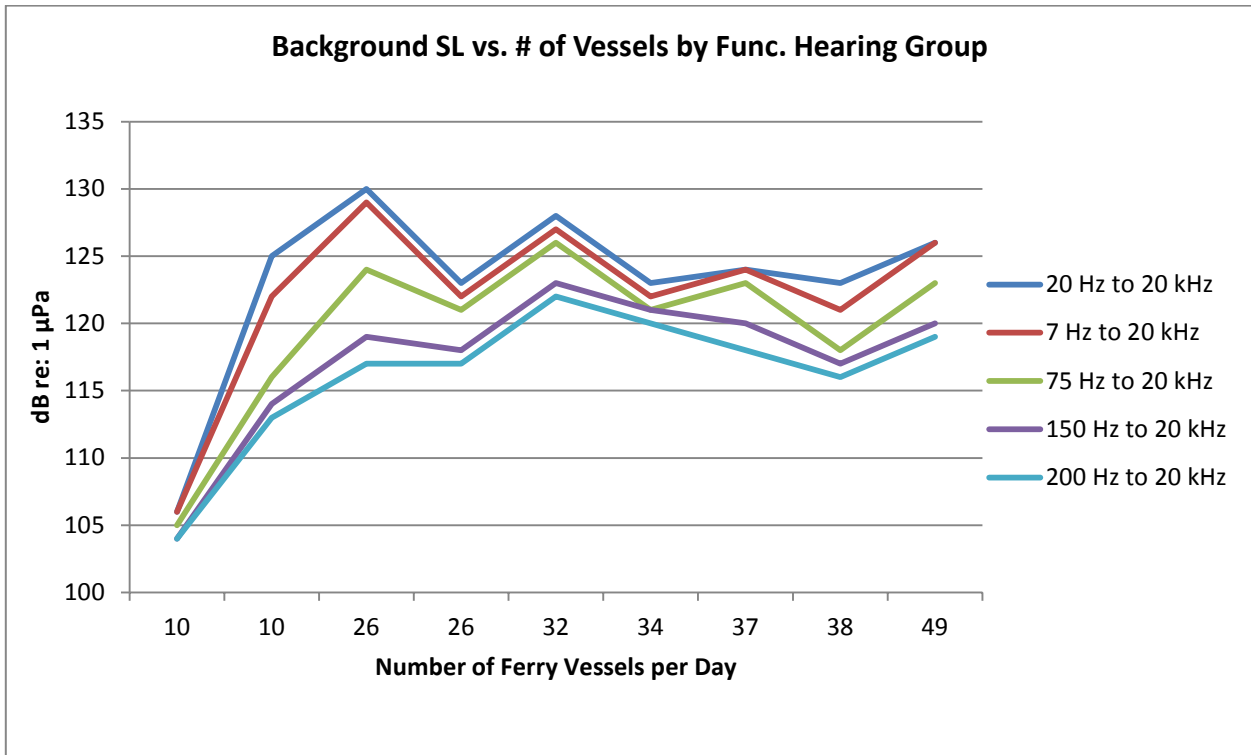


Figure 51: Background sound levels by functional hearing group and number of ferry vessels per day for a 72-hour period for all terminals.

Table 13. Underwater Background Monitoring Results, 3, 24-hour Periods.

Frequency Range	Functional Hearing Group	Port									
		Townsend	Anacortes	Edmonds	Seattle	Mukilteo	Mukilteo	Kingston	Vashon	Southworth	Coupeville
		50% CDF ¹ (dB)	50% CDF ² (dB)	50% CDF ³ (dB)	50% CDF ⁴ (dB)	50% CDF ⁵ (dB)	50% CDF ¹⁰ (dB)	50% CDF ⁵ (dB)	50% CDF ⁷ (dB)	50% CDF ⁸ (dB)	50% CDF ⁹ (dB)
7 Hz to 20 kHz	Low Frequency Cetaceans	106	129	122	127	122	123	124	126	121	122
75 Hz to 20 kHz	Phocid Pinnipeds	105	124	121	126	121	121	123	123	118	116
100 Hz to 20 kHz	Otariid Pinnipeds	-	-	-	-	-	121	-	-	118	116
150 Hz to 20 kHz	Mid Frequency Cetaceans	104	119	118	123	121	120	120	120	117	114
200 Hz to 20 kHz	High Frequency Cetaceans	104	117	117	122	120	119	118	119	116	113
1 Hz to 20 kHz	Broadband ⁶ Background – used for fish and murrelets	106	130	123	128	123	123	124	126	123	125

¹ Dahl et al. 2010. Measured in April 2010.

² Laughlin 2011b. Measured in March 2011.

³ Laughlin 2011c. Measured in April 2011.

⁴ Laughlin 2011d. Measured in April 2011.

⁵ Laughlin 2011a. Measured in May 2011.

⁶ Broadband level used for establishing Action Areas, and for MMPA permitting.

⁷ Measured in October 2013.

⁸ Measured in February 2014.

⁹ Measured in February 2014.

¹⁰ Measured in April 2015.

Table 14: Underwater Background Monitoring Results, Daytime Only.

Frequency Range	Functional Hearing Group	Port									
		Townsend	Anacortes	Edmonds	Seattle	Mukilteo	Mukilteo	Kingston	Vashon	Southworth	Coupeville
		50% CDF ¹ (dB)	50% CDF ² (dB)	50% CDF ³ (dB)	50% CDF ⁴ (dB)	50% CDF ⁵ (dB)	50% CDF ¹⁰ (dB)	50% CDF ⁵ (dB)	50% CDF ⁷ (dB)	50% CDF ⁸ (dB)	50% CDF ⁹ (dB)
7 Hz to 20 kHz	Low Frequency Cetaceans	107	133	123	130	124	124	126	128	123	124
75 Hz to 20 kHz	Phocid Pinnipeds	107	125	121	127	122	121	126	125	121	119
100 Hz to 20 kHz	Otariid Pinnipeds	-	-	-	-	-	121	-	-	118	119
150 Hz to 20 kHz	Mid Frequency Cetaceans	107	124	120	124	122	121	122	122	118	118
200 Hz to 20 kHz	High Frequency Cetaceans	106	123	119	124	122	121	120	121	117	117
1 Hz to 20 kHz	Broadband ⁶ Background										
	used for fish and murrelets	107	133	123	141	124	124	126	128	124	125

¹ Dahl et al. 2010. Measured in April 2010.

² Laughlin 2011b. Measured in March 2011.

³ Laughlin 2011c. Measured in April 2011.

⁴ Laughlin 2011d. Measured in April 2011.

⁵ Laughlin 2011a. Measured in May 2011.

⁶ Broadband level used for establishing Action Areas, and for MMPA permitting.

⁷ Measured in October 2013.

⁸ Measured in February 2014.

⁹ Measured in February 2014.

¹⁰ Measured in April 2015.

CONCLUSIONS

The overall average background sound level for the frequency range of 20 Hz to 20 kHz is estimated to range between 123 dB and 141 dB for three consecutive 24-hour periods (Table 13). This implies that source levels from vibratory pile driving will attenuate to daytime background sound levels before they reach the 120 dB threshold for pinnipeds and for Killer Whale at all sites except Port Townsend, Edmonds, Southworth and Coupeville.

The underwater background sound levels during the daytime near the ferry terminals are dominated by ferry vessel traffic. The dominant 1/3rd octave band frequency contained in the background sound levels ranges between 50 Hz and 63 Hz. Frequencies within this range are typical for ferry vessel traffic. The magnitude of the underwater background sound levels is in part dependent upon the number of ferry vessels arriving and departing from the terminal as well as the size of the vessels.

A comparison of the Evergreen Class (Klikitat) vessels and the new Olympic Class vessels (Tokitae) indicate that the Olympic Class vessels are quieter although the overall sound levels may be influenced by other sources in the area and show no difference when compared to previous measurements at the same location.

According to current NMFS (2012) guidance on the collection and analysis of underwater background sound levels three consecutive daytime only datasets can be analyzed to determine background sound levels if the pile driving will occur only during the daytime hours. In this report we also analyzed the data using only the daytime sound levels (Table 14).

Background sound levels during daytime hours are slightly higher than the combined daytime and nighttime background sound levels. This slight change is probably due to the fact that ferry vessels often run until 10 pm or later at some terminals.

REFERENCES

- Dahl , Peter H. and Per G. Reinhall and Mark L. Stockham, 2010. Analysis of the Port Townsend In-water Acoustic Background. WSDOT technical report, December 2, 2010.
- Dahl, pers. comm., 2010.
- Laughlin 2011a. Mukilteo Ferry Terminal Background Sound Measurement Results, May 2011 – FINAL Technical Memorandum. June 30, 2011. WSDOT. Seattle, WA
- Laughlin 2011b. Laughlin, Jim. Anacortes Ferry Terminal Background Sound Measurement Results – FINAL Technical Memorandum. May 3, 2011. WSDOT. Seattle, WA.
- Laughlin 2011c. Laughlin, Jim. Edmonds Ferry Terminal Background Sound Measurement Results – FINAL Technical Memorandum. May 18, 2011. WSDOT. Seattle, WA.
- Laughlin 2011d. Laughlin, Jim. Seattle Ferry Terminal Background Sound Measurement Results – FINAL Technical Memorandum. May 18, 2011. WSDOT. Seattle, WA.
- Veirs. 2006. Val and Scott Veirs. Average levels and power spectra of ambient sound in the habitat of southern resident orcas. Beam Reach Marine Science and Sustainability School. April 21, 2006 (unpublished). Seattle, Washington.
- NMFS. 2012. Guidance Document: Data collection methods to characterize underwater background sound relevant to marine mammals in coastal nearshore waters and rivers of Washington and Oregon. NMFS Memorandum.
- NOAA, 2013. Draft guidance for assessing the effects of anthropogenic sound on marine mammals.
- Southall, B.L., A.E. Bowles, W.T. Ellison, J.J. Finneran, R.L. Gentry, C.R. Greene, D. Kastak, D.R. Ketten, J.H. Miller, P.E. Nachtigall, W.J. Richardson, J.A. Thomas, and P.L. Tyack. 2007. Marine Mammal Noise Exposure Criteria: Initial Scientific Recommendations. *Aquatic Mammals* 33(4): 411-521. <http://www.nwr.noaa.gov/Marine-Mammals/MM-sound-areas.cfm>