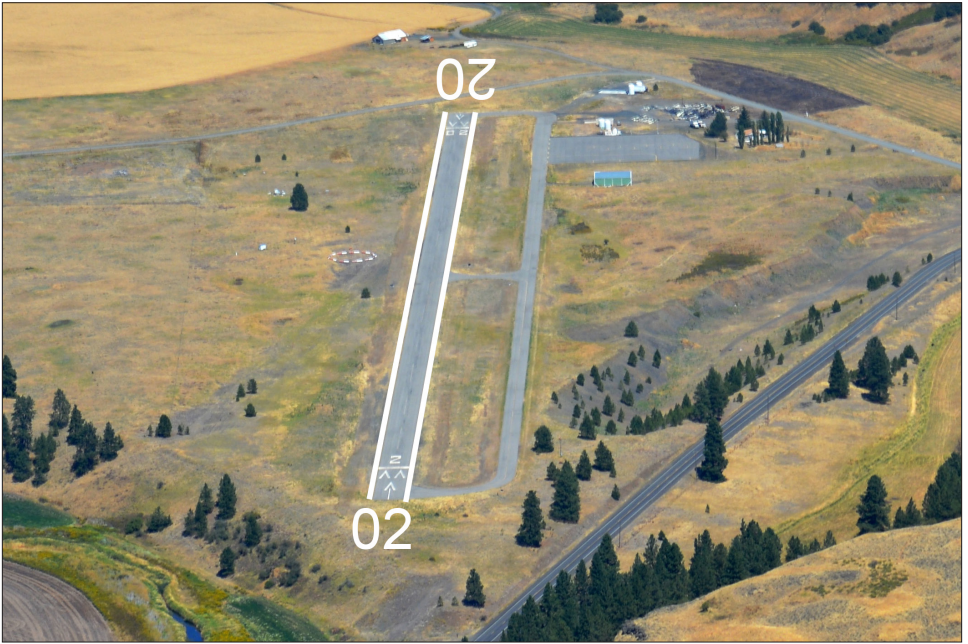


Rosalia / Rosalia Municipal / 72S

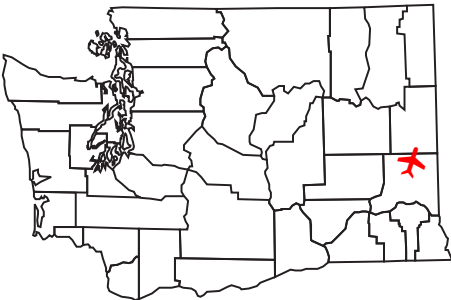


Communications

CTAF 122.9
 PCL 122.9 (For MIRL)

Navigation

Elevation 2170' MSL
 TPA 3170' MSL (1000' AGL)
 Runway 02/20; 2807'x45'; ASPH
 Lights Dusk-dawn, MIRL
 Latitude N 47° 14.19'
 Longitude W 117° 25.28'



Services

Fuel 100LL

Fly Washington Passport Program – Stamp located in mailbox on the northeast corner of the tie-down area.

Notes

Right-hand traffic on Runway 20. Unattended. Rotating beacon OTS indef.