

SR 202 Corridor Studies

244th Avenue NE to 324th Avenue SE
SR 202 within Fall City

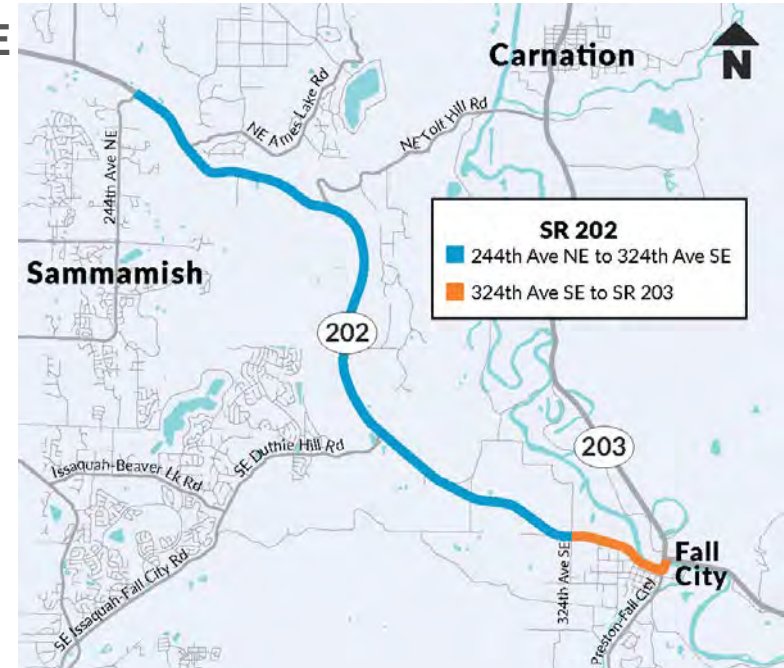
Thomas Noyes

Senior Transportation Planner
Management of Mobility Division

Maan Sidhu

Assistant Area Traffic Engineer
King County

NOVEMBER 17, 2020



Today's meeting

- Study background and context
- Existing conditions and needs
- Problem statement
- Goals and objectives
- Evaluation criteria
- Communications and outreach
- Next steps
- Discussion



Study Partners



- King County Roads Division
- King County Metro
- Fall City Community Association
- Washington State Patrol
- Washington Trucking Association
- Puget Sound Regional Council
- Tribes



- Understand community needs, priorities, and roadway issues
- Document community vision within Fall City
- Identify strategies & improvement concepts to improve
 - Pedestrian and traveler safety
 - Multimodal access
 - Environment

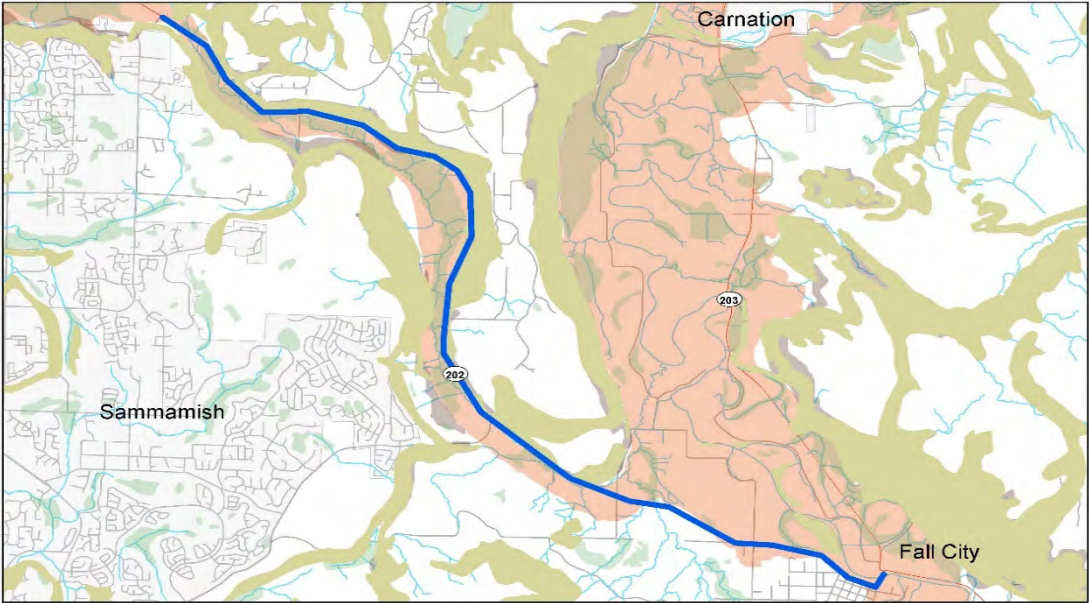
Existing Conditions



- Environmental conditions
- Pedestrian connectivity
- Transit
- Roadway/intersection operations and safety



Environmental Conditions

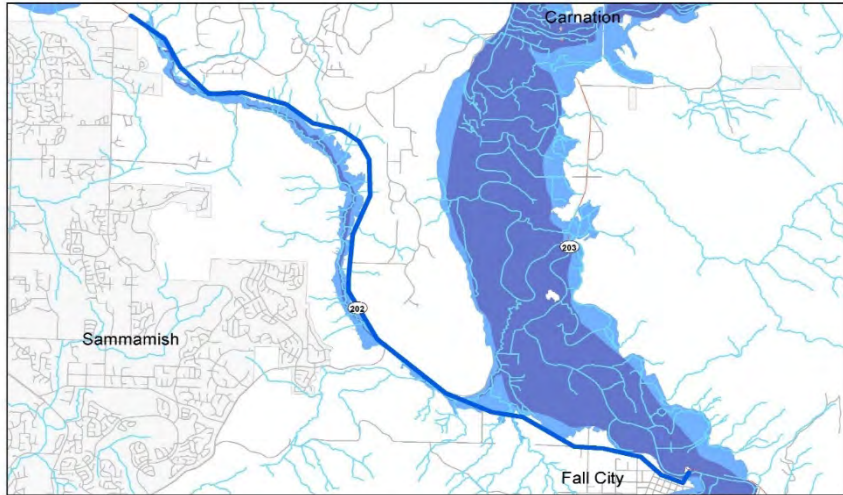


- Study Extent
- Erosion Hazards
- Sensitive Area Ordinance Wetland Areas
- Landslide Hazard Areas
- Seismic Hazards
- Streams

**Environmental Conditions
near SR 202**

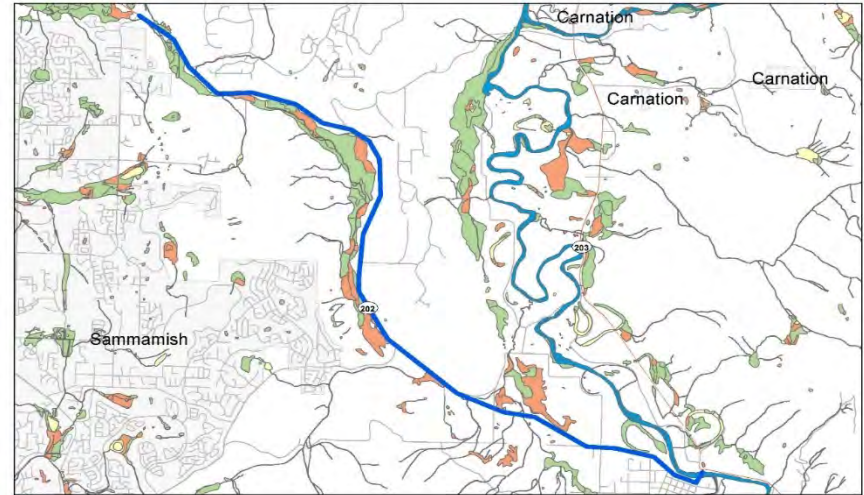


Flood zones and wetlands



- Study Extent
- Streams
- Floodway
- Floodplain

FEMA - National Flood Hazard Flood Zones

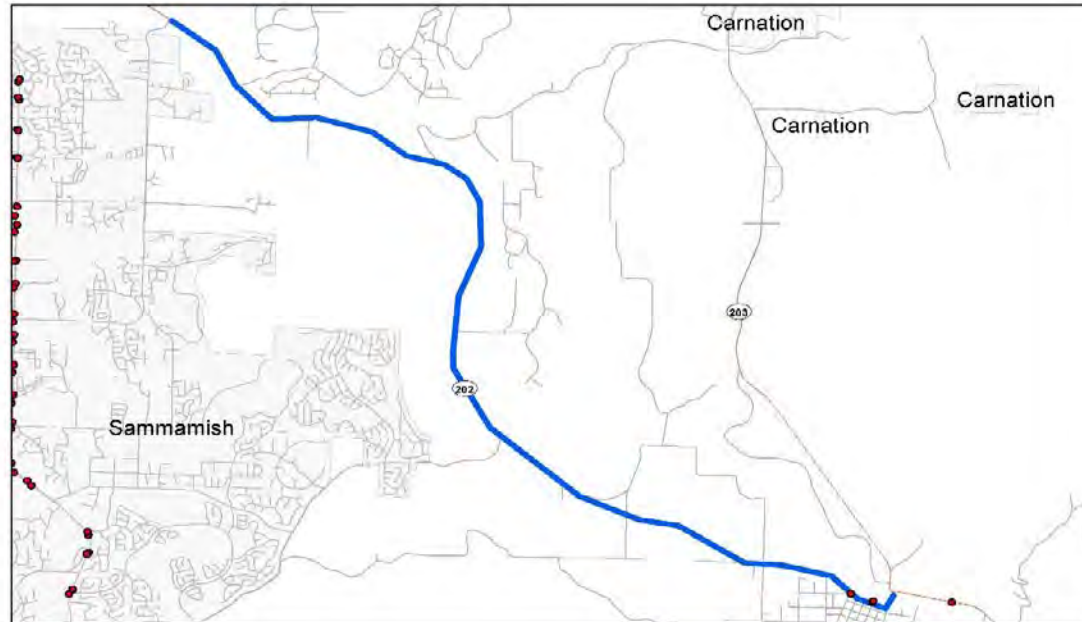


- Study Extent
- Freshwater Forested/Shrub Wetland (PFO, PSS)
- Freshwater Emergent Wetland (PEM)
- Freshwater Pond (PUB, PAB)
- Riverine

National Wetland Inventory - Wetlands



Transit access in Fall City

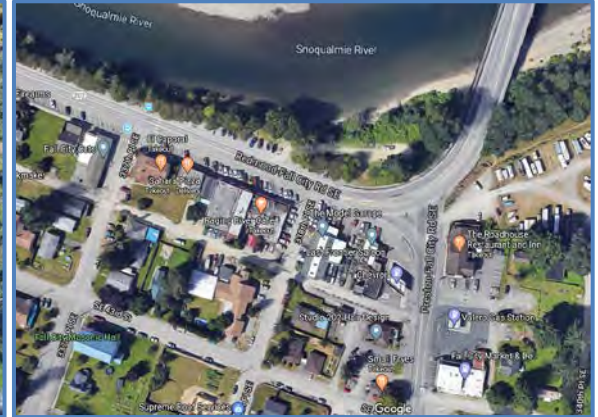


- Transit Stops
- Study Extent

Transit Stops near SR 202



Corridor tour, discussion



Problem Statement



SR 202 in rural King County between the intersections of 244th Avenue NE and 324th Avenue SE has operational and safety performance issues.

SR 202 in Fall City lacks complete pedestrian facilities and has documented performance issues.



- Safety (consistency with Target Zero, Crash-reduction, etc.)
- Accessibility (pedestrian connectivity, access to transit)
- Constructability (cost, technical feasibility, etc.)
- Community Support (including preserving community character)

- Web survey
 - Trip purpose
 - Origins and Destinations
 - User needs
- Online open house
- Webpage, online resources

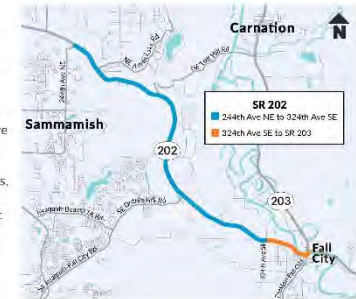


SUMMER/FALL 2020

SR 202 Corridor Studies

The Washington State Department of Transportation (WSDOT) seeks community input on two corridor studies along SR 202. One study will focus on SR 202 between 244th Ave NE to 324th Ave SE, and the second study will cover SR 202 between 324th Ave SE and SR 203 in Fall City.

Input from residents, business owners, and road users will help shape this planning work. These studies will set the stage to pursue future funding for the design and construction of highway improvements.



BACKGROUND

SR 202 from 244th Avenue NE to 324th Avenue SE

Between 244th Ave NE and 324th Ave SE, SR 202 passes through rural King County as a high-speed state highway. Locations along the corridor have a history of crashes and safety concerns. This study will evaluate safety on this segment of SR 202, and will develop targeted strategies to improve safety performance.

SR 202 in Fall City

SR 202 within Fall City has gaps in pedestrian facilities between recreational areas, residential neighborhoods, and businesses in Fall City. The intersection of Preston-Fall City Road also remains unimproved since the completion of the roundabout at the intersection of SR 202 and SR 203. This study will assess corridor needs for SR 202 from the 324th Ave SE intersection to the roundabout junction at SR 203. It will document strategies to improve operations, safety performance, and accessibility for all users.

- **Understand travel patterns and issues**
- Obtain **feedback from residents and stakeholders** on existing and future corridor needs, performance gaps, and other concerns
- Develop **strategies** for improved bicycle, pedestrian, and transit access, safety, and operations
- **Integrate strategies** with partner efforts, such as the Fall City Community Association and others

Summer – Fall 2020

- Data collection
- Engagement and survey

Fall 2020 – Winter 2021

- Concept development
- Ongoing engagement

Summer 2021

- Final report available online



Questions?

Thomas Noyes: Thomas.Noyes@wsdot.wa.gov

Maan Sidhu: Maan.Sidhu@wsdot.wa.gov

Studies Webpage: <https://bit.ly/SR202studies>