

Washington State Ferries 2040 Long Range Plan

Executive Advisory Group

Assistant Secretary Amy Scarton, WSF

Stephanie Cirkovich, WSF Community Services and Planning Director

Ray Deardorf, WSF Senior Planning Manager

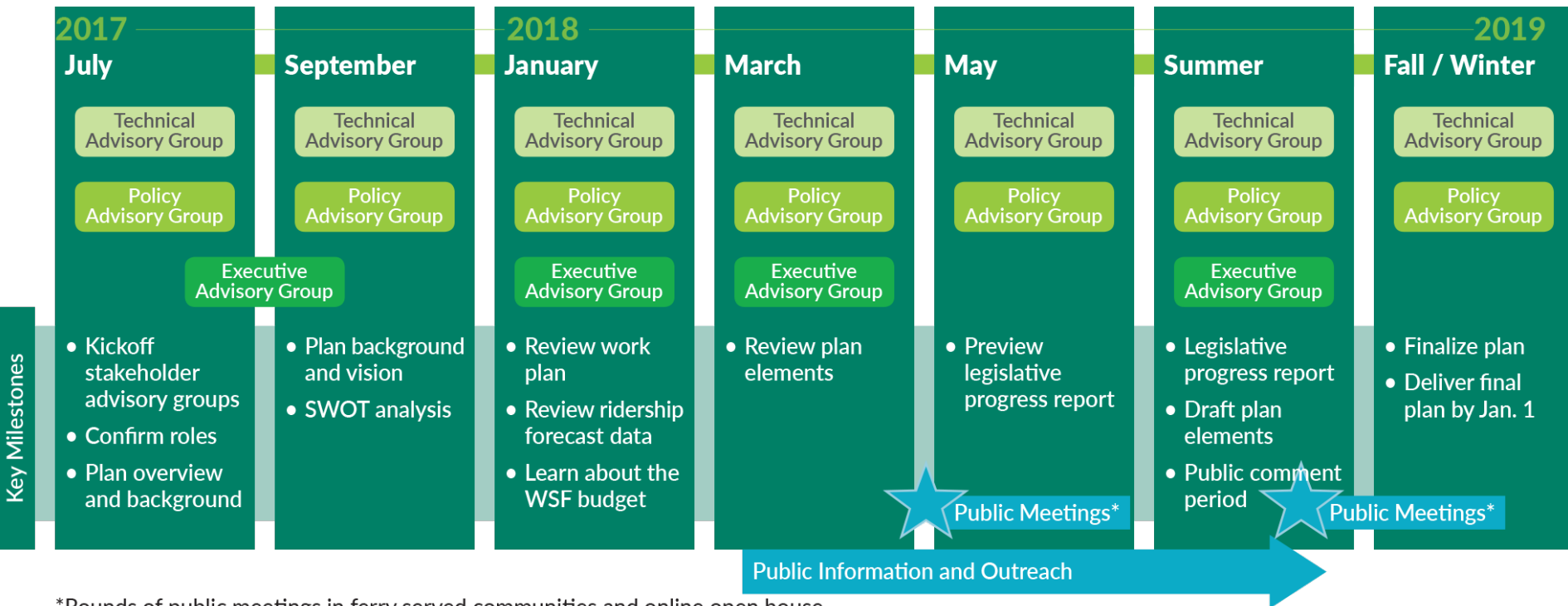
January 16, 2018

Agenda



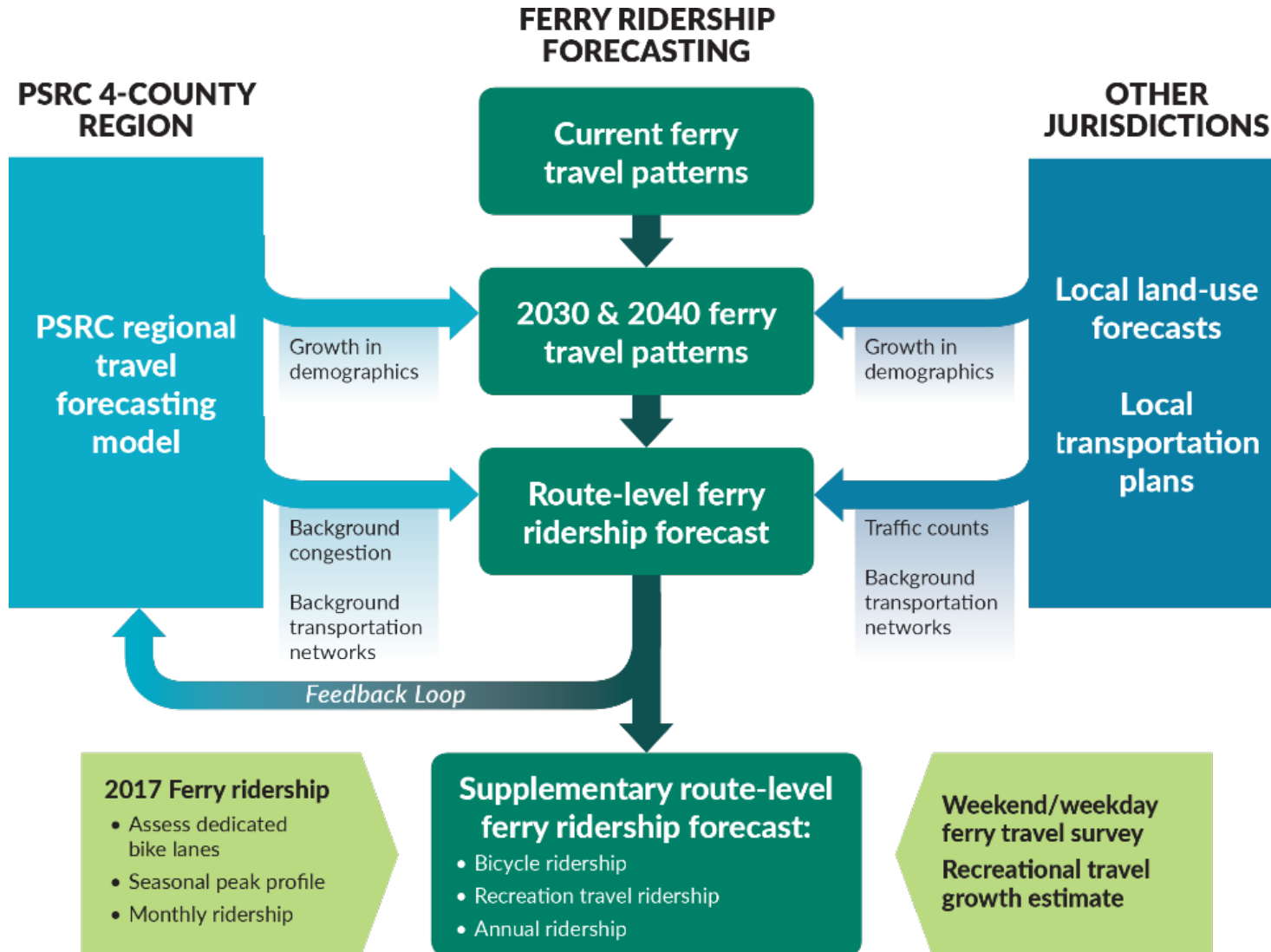
- Welcome and introductions
- Meet the project team and review work plan
- Ridership forecast results
- Next steps

Long Range Plan Stakeholder and Community Outreach



*Rounds of public meetings in ferry served communities and online open house.

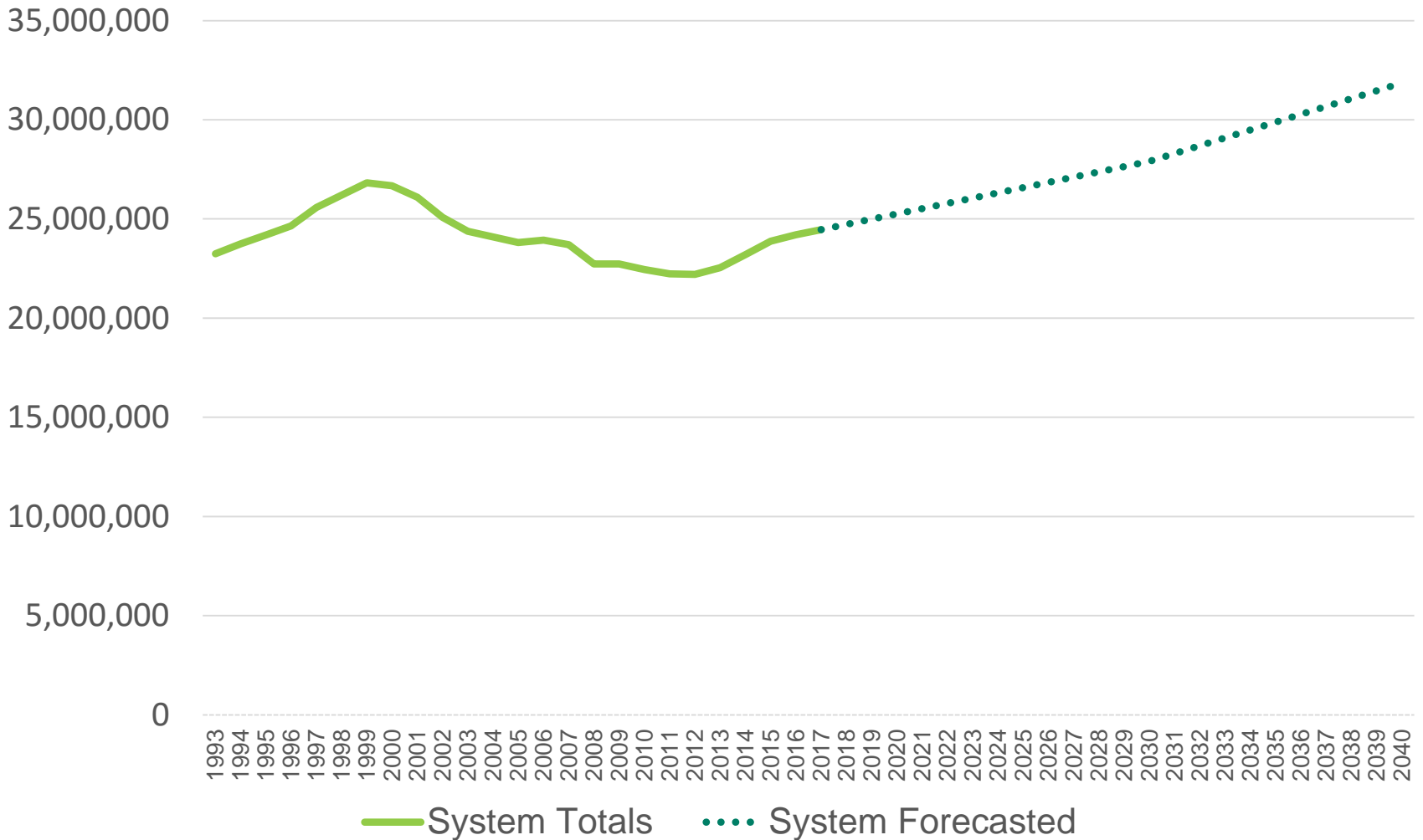
Ridership Forecast Model



Key Findings

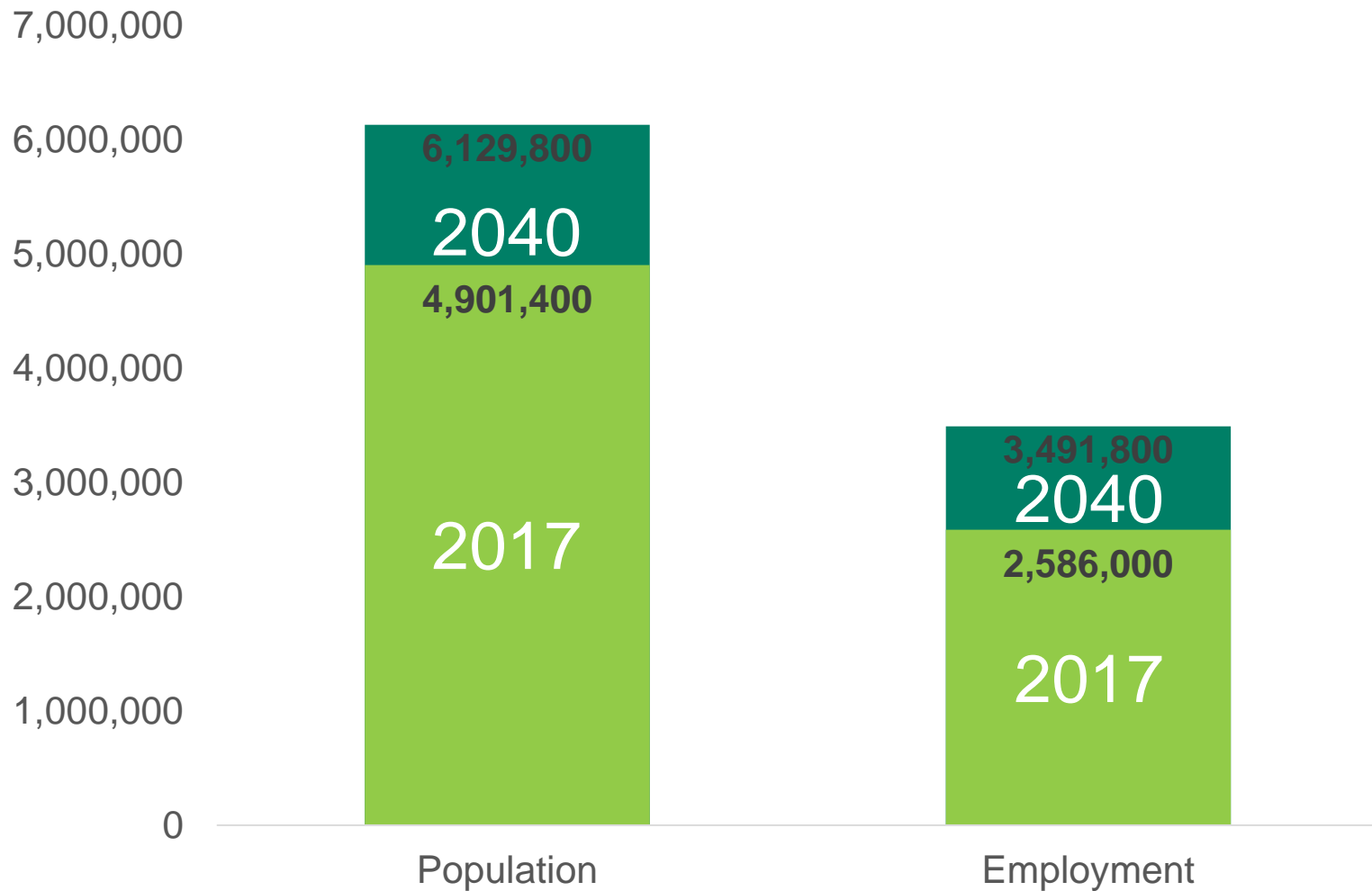
- The last 15 years, yearly ferry ridership growth between -4 and +2.9 percent
- Annual growth forecasts by 2040:
 - Population: 1 percent
 - Households: 1.2 percent
 - Employment: 1.3 percent
 - Ferry ridership: 1.2 percent
- Overall ferry ridership growth by 2040: 30 percent

WSF Ridership History (1993-2017) and Preliminary Forecast (2018-2040)



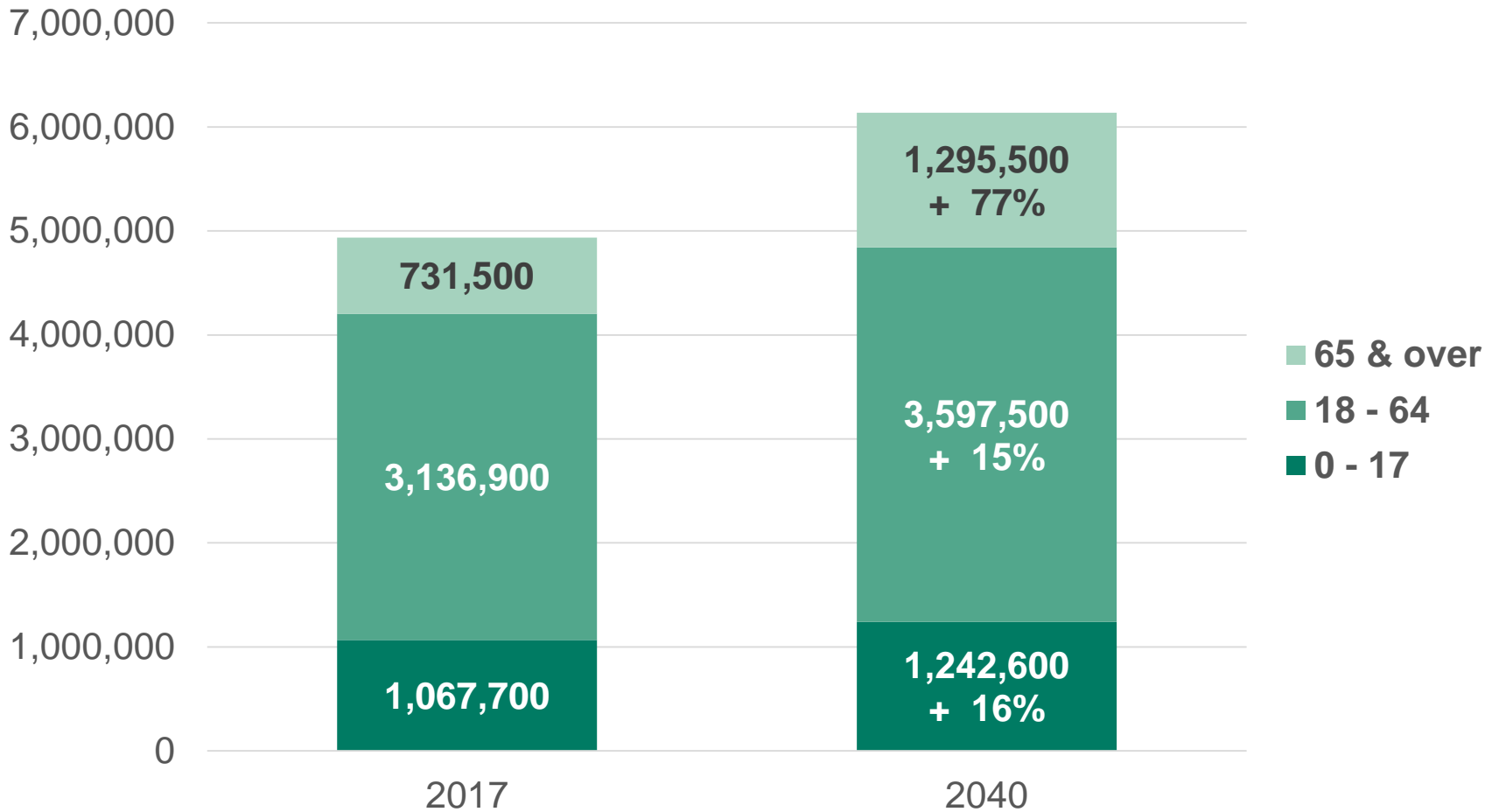
Sources: WSF Traffic History and WSF Baseline Ridership Forecasts

Population and Employment in the 12 County Area for 2017 and 2040



Source:

WSF Service Area 12-County Age Demographics

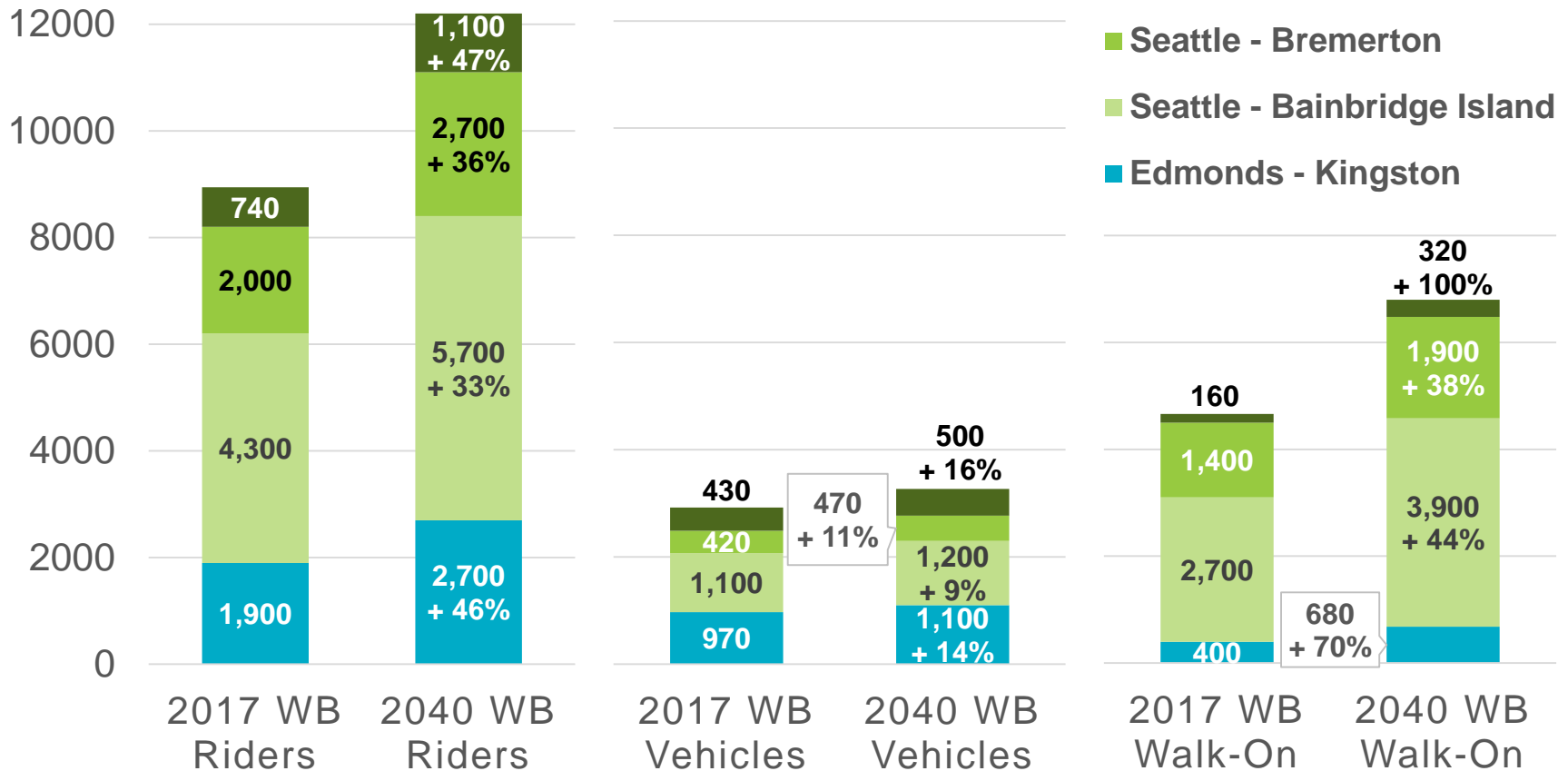


Source:

Key findings: Kitsap Westbound PM Travel

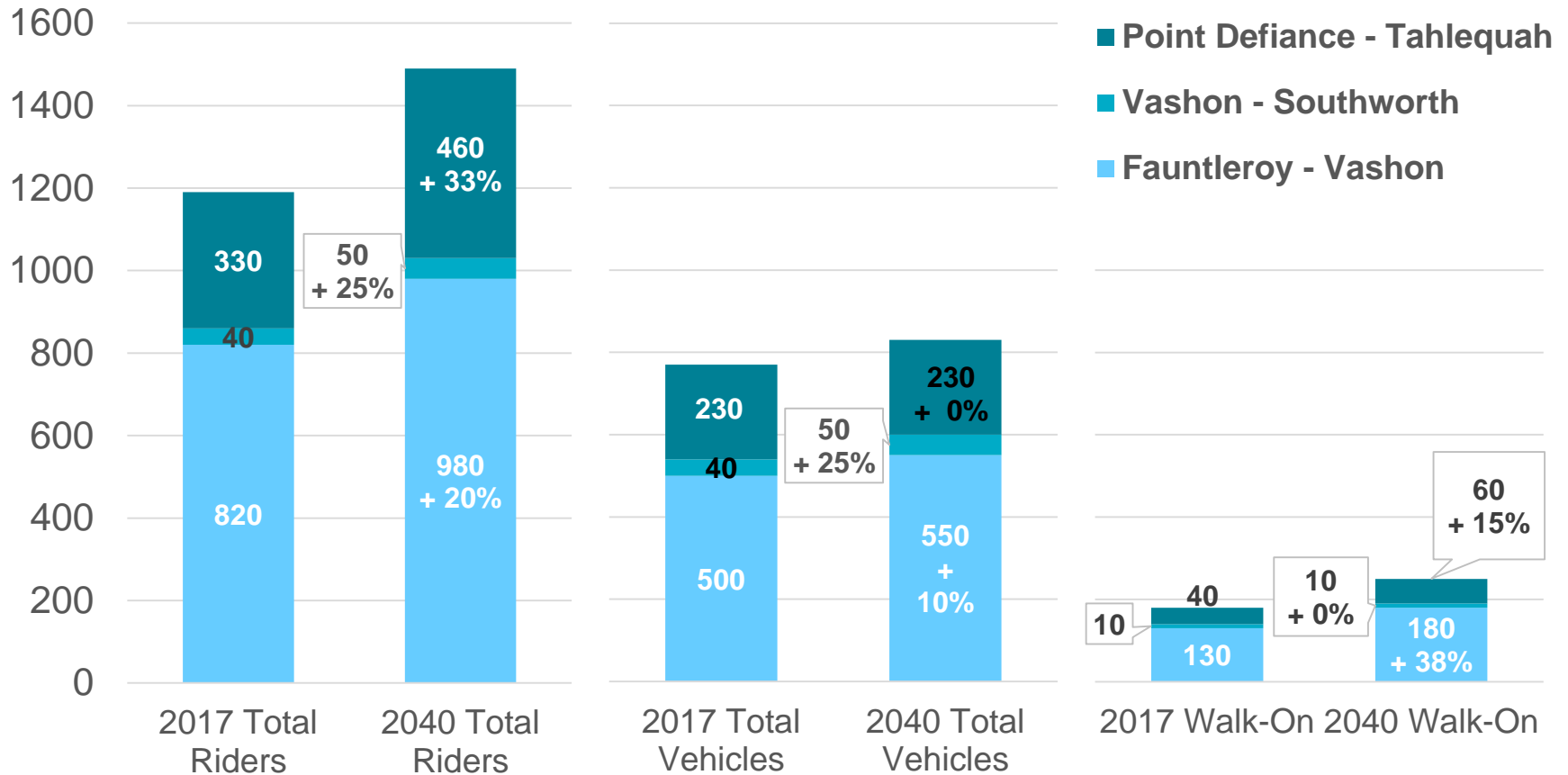


- 2040 population and employment increases 41% from 2017.
- Riders 65+ fastest growing demographic.
- West Seattle Light Rail by 2030.



Key Findings: Vashon Island PM Travel

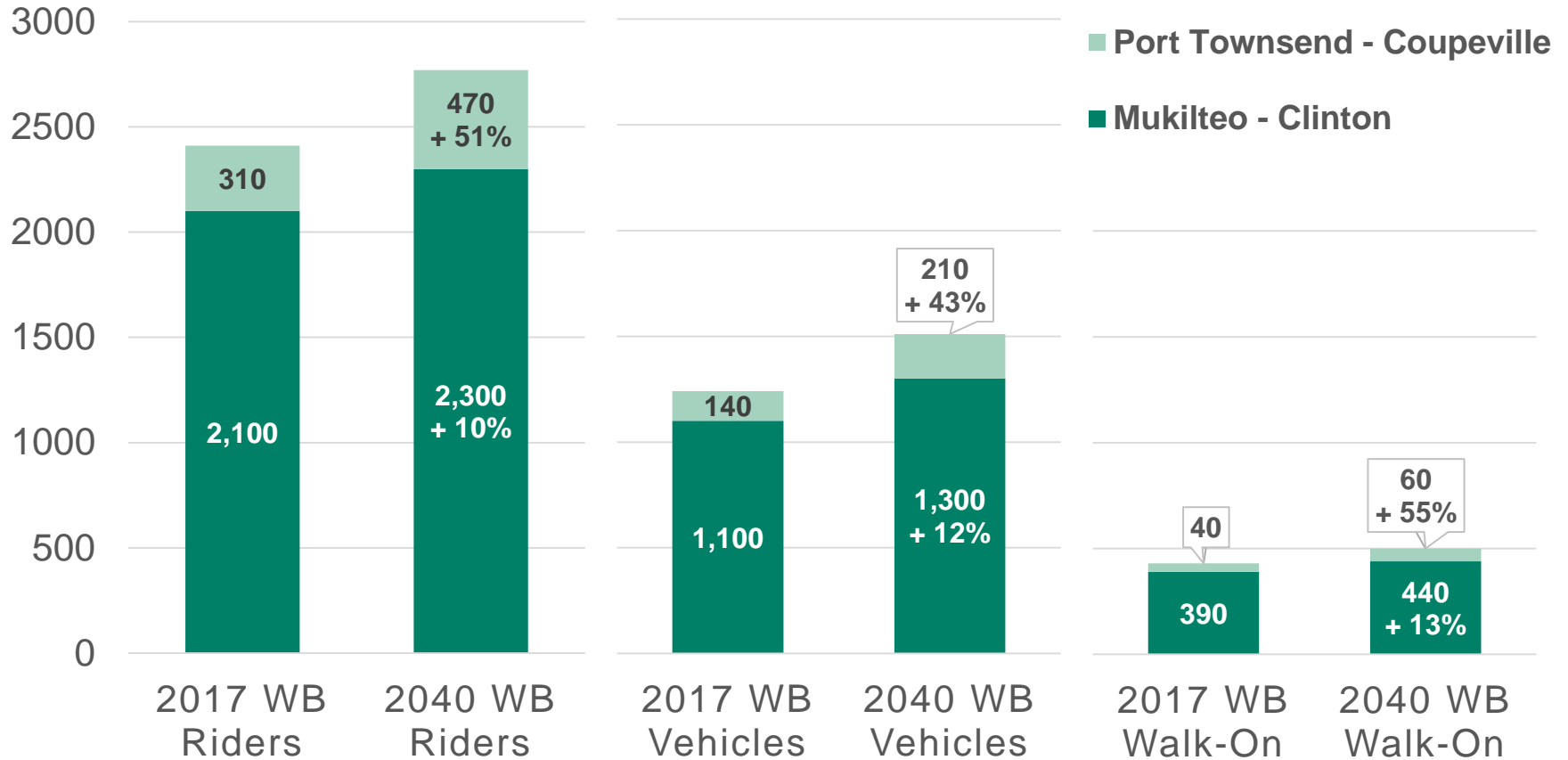
- Vashon Island 2040 population increases 18% from 2017.
- Employment increases 7% from 2017.
- Landside road changes impact travel.



Key Findings: Whidbey Westbound PM Travel




- Island County 2040 population increases 10% from 2017.
- Employment increases 9% from 2017.
- Population 65+ fastest growing demographic.

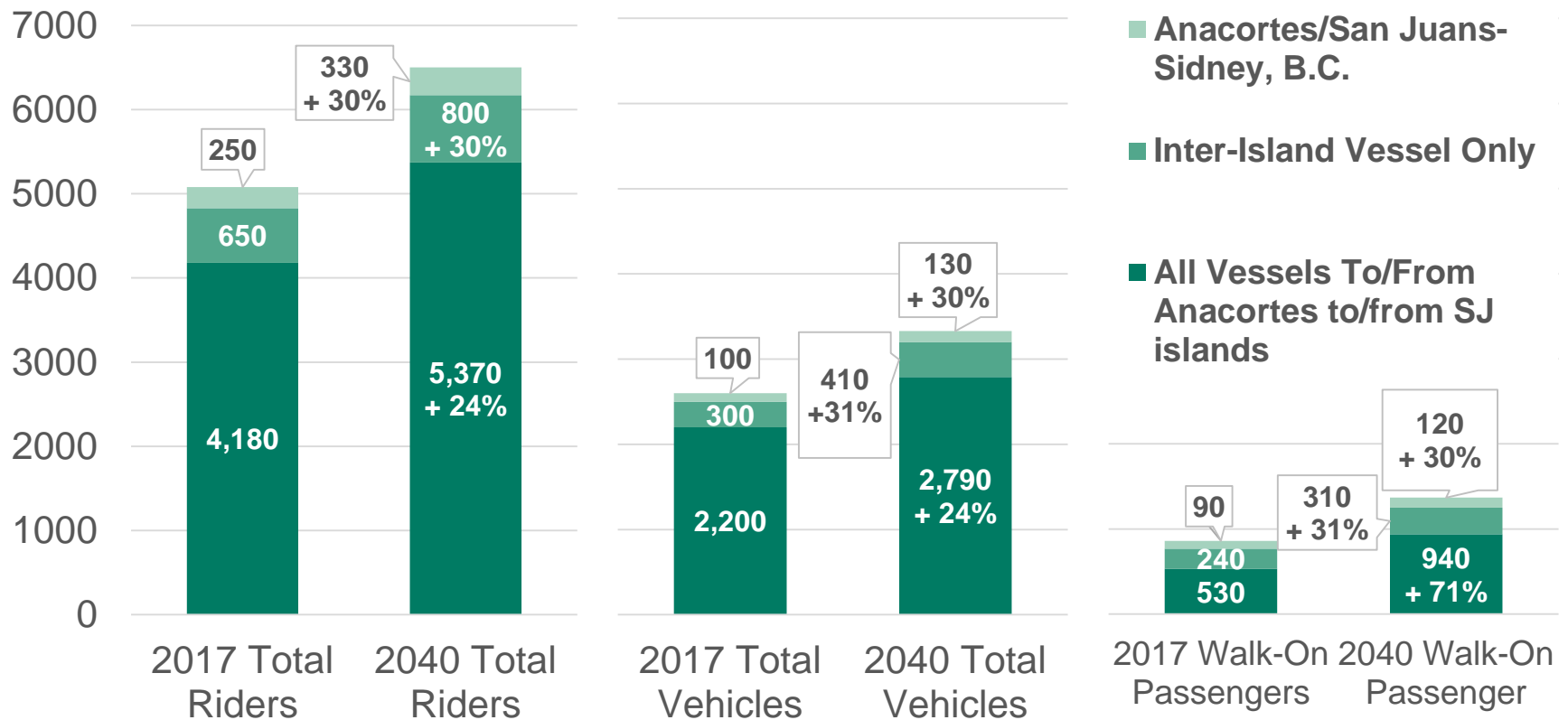


Key Findings: San Juan Islands

Daily both Westbound and Eastbound



- 2040 population increases 18% from 2017.
- Employment increases 31% from 2017.



Look ahead



- Review plan elements
- Next EAG meeting: March