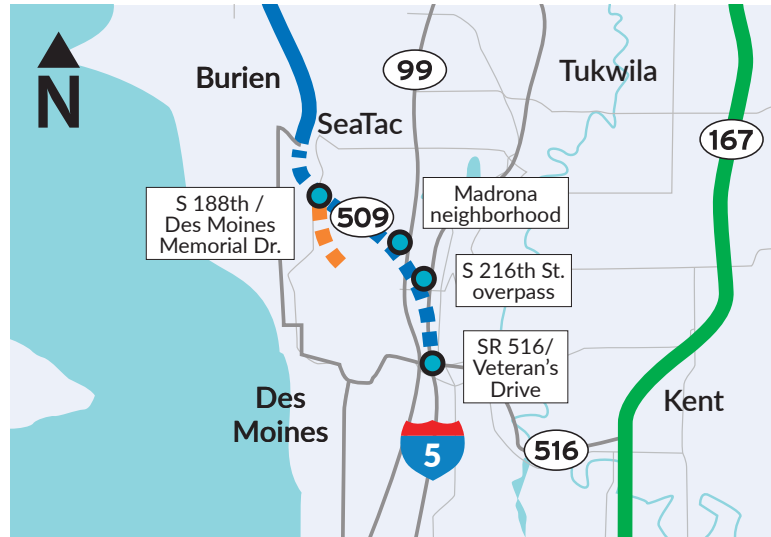


Multimodal benefits of the Puget Sound Gateway Program

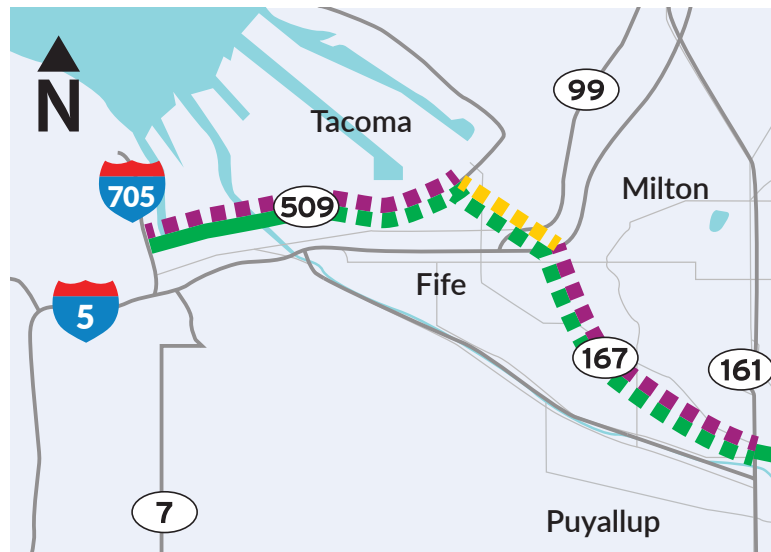
As part of the Puget Sound Gateway Program, WSDOT is maximizing capacity, safety and access for transportation system users from walkers to freight haulers. WSDOT can provide many of these solutions due to close partnerships with 18 local agencies and jurisdictions.

About the Puget Sound Gateway Program

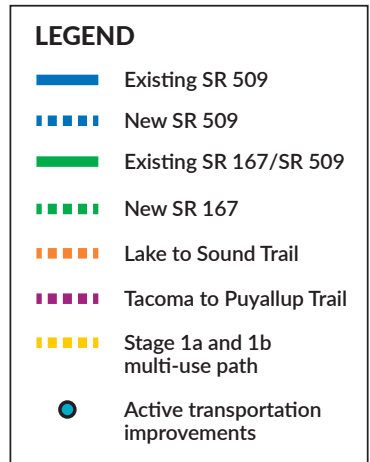
In July 2015, the Washington State Legislature and Governor Inslee acted to fund the Puget Sound Gateway Program through the Connecting Washington funding package. The Puget Sound Gateway Program is composed of two projects: completion of SR 167 in Pierce County, and completion of SR 509 in King County. These projects provide essential connections to the ports of Tacoma and Seattle and will help ensure people and goods move more reliably through the Puget Sound region.



SR 509 Completion Project



SR 167 Completion Project



SR 509 active transportation elements	
Sidewalks	1.7 mi
Shared-Use Path	2.7 mi
Bike Lanes	0.3 mi

SR 167 active transportation elements	
Sidewalks	1.8 mi
Shared-Use Path	3.7 mi
Bike Lanes	1.4 mi

Tacoma to Puyallup Trail active transportation elements	
Shared-Use Path	6.9 mi

Walkers and rollers

The SR 167 and SR 509 Completion projects allow WSDOT to connect to planned trail corridors, creating new opportunities for residents, workers, and visitors to travel around the region without a car.

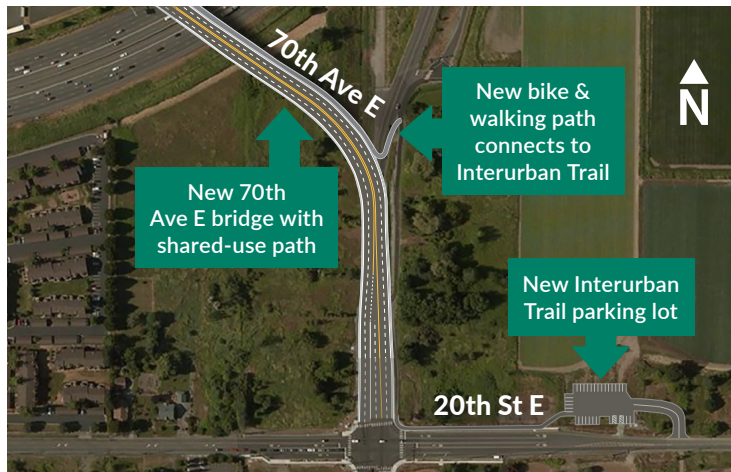
Who will use it?

As part of the SR 509 Completion Project, WSDOT will add ADA accessible sidewalks in the Madrona neighborhood in SeaTac between S. 200th Street and S. 208th Street, which connect directly to Sound Transit's Federal Way Link Extension line where it crosses SR 99. This will provide critical access to a neighborhood with numerous multifamily residences and lower-than-average incomes.



Through the SR 509 Completion Project, WSDOT will construct new shared-use paths and sidewalks in the SeaTac and Des Moines Regional Growth Centers to separate pedestrian and bicycle traffic from freight trucks and other vehicles.

Through the SR 167 Completion Project, WSDOT will construct a new shared-use path that connects to the existing Interurban Trail, includes new trailhead parking, and builds a new shared-use pathway over I-5 on the 70th Avenue East bridge to SR 99. This shared-use path will continue northwest from SR 99 along the new highway alignment to SR 509.



WSDOT is improving bike and pedestrian connections as part of the 70th Avenue East Bridge Replacement project.

Transit connections

Who will use it?

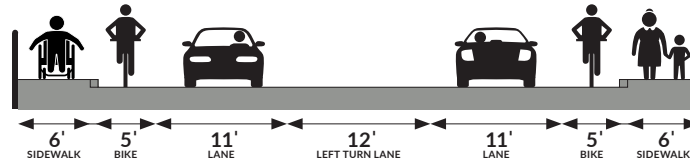
The entire Puget Sound region will be more connected when Sound Transit completes the Federal Way and Tacoma Dome Link extension projects. The SR 167 and SR 509 Completion Projects help build out the "last mile" of this connectivity, making it possible for thousands of people in the south sound to access work and recreation throughout the region without using a car.



WSDOT will make it easier for people to walk, bike and roll to transit stations. Through the SR 509 Completion Project, WSDOT will improve and add sidewalks, bike lanes, and shared-use paths under the I-5/SR 516 interchange and connect Kent residents and workers to the new Kent-Des Moines Light Rail Station. This supports Kent's Midway Subarea Plan, which designates land west and northeast of the I-5/SR 516 Interchange as a Transit Oriented Community (TOC). WSDOT will also enhance access to the King County Metro park and ride at SR 516 and Military Road.

Through the SR 167 Completion Project, WSDOT will construct a shared-use path that provides better connectivity to the future Fife Light Rail Station, part of Sound Transit's Tacoma Dome Link Extension, with a possible future connection into downtown Tacoma as part of the Tacoma to Puyallup Regional Trail corridor.

Accessibility for all



As part of the SR 509 project, WSDOT will build a new overpass across I-5 at S. 216th Street which will include wider sidewalks and bicycle lanes.

Each project includes local road improvements to sidewalks, bike lanes, and several separated shared-use paths. These improvements add new facilities and address deficient existing structures. All sidewalks and shared-use paths built or improved within these projects are compliant with the Americans with Disabilities Act (ADA) regulations. Both projects focus on regional connections, creating safer routes and access for pedestrians with adaptive devices, as well as walkers and bicyclists.

Freight mobility

WSDOT is completing critical freight links between marine ports and industrial areas, and between I-5 and Sea-Tac Airport for passengers and air cargo. Building these connections reduces traffic congestion on local roadways and creates safer options for commuters, pedestrians, bicyclists, freight haulers, and other roadway users.

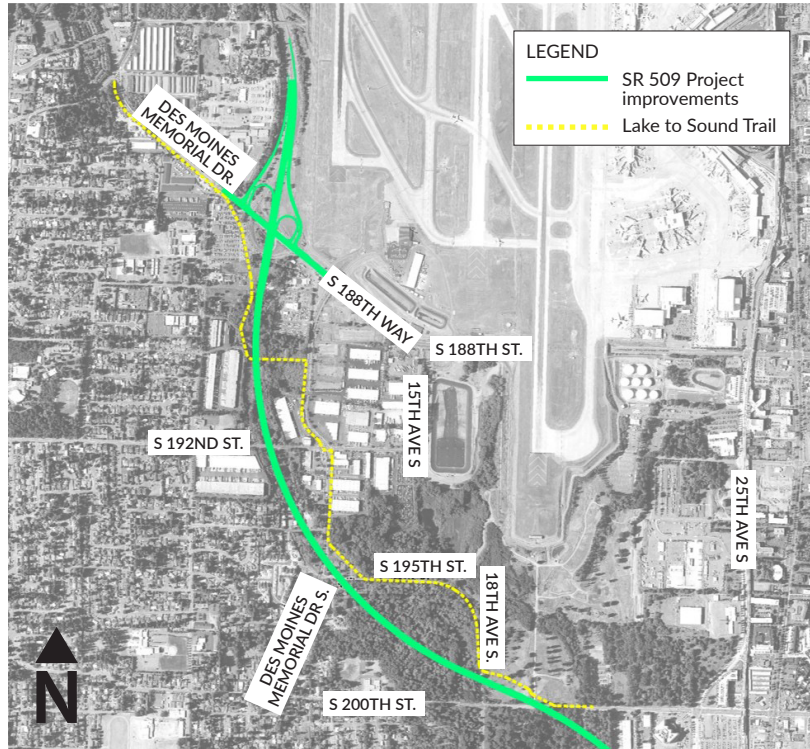
Who will use it?

The S. 216th Street bridge in Des Moines (part of the SR 509 Completion Project) is a critical connection point for residents walking and rolling to work, school and essential activities like grocery shopping. Currently, the bridge's sidewalks are too narrow to accommodate wheel chairs, and bicyclists must merge with vehicular traffic to get across. When constructed, the new bridge will have six-foot ADA accessible sidewalks and dedicated bike lanes that will reduce pedestrian and bicyclist exposure to traffic conflicts.



Active transportation corridors

Lake to Sound Trail

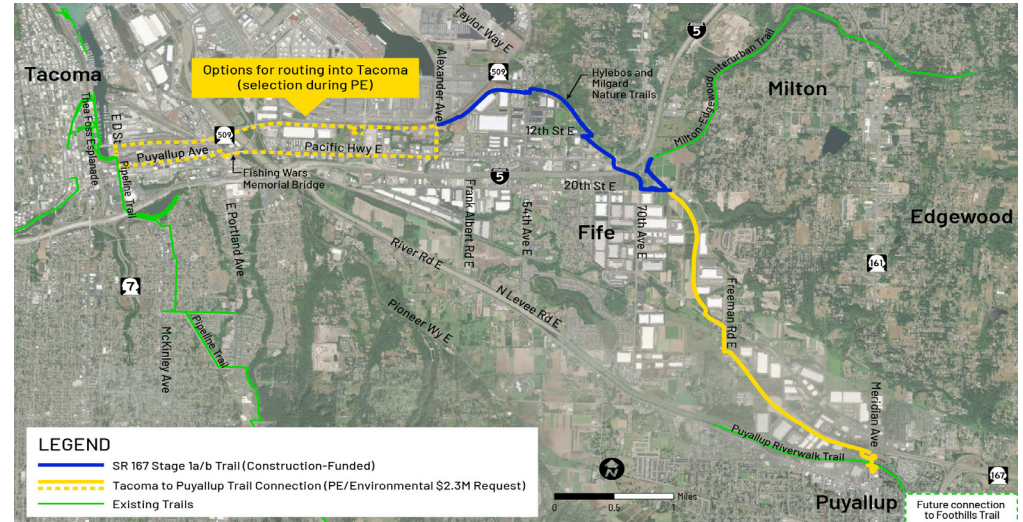


The Puget Sound Gateway Program will fund construction of a 1.8-mile portion of the Lake to Sound Trail, which will connect people in Des Moines and Burien to jobs and recreation centers without the use of a car. The Lake to Sound Trail is a 16-mile non-motorized trail extending from Lake Washington to the Puget Sound shoreline. The SR 509 alignment will cross over the trail near South 200th Street and South 189th Street.

Partnerships for active transportation

WSDOT will contribute \$10.3 million and is working closely with the City of SeaTac and King County to construct a 1.8-mile section of the Lake to Sound Trail.

Tacoma to Puyallup Regional Trail



The Tacoma to Puyallup Regional Trail Connection is an envisioned corridor between downtown Tacoma and downtown Puyallup for people walking and rolling that is physically separated from car traffic and safe for people of all ages and abilities. It fills a critical gap in the larger Tacoma (Mt. Rainier) to Tacoma trail network, which will be approximately 63 miles long. In 2019, WSDOT joined with partners to conduct a Route Analysis Study through the Puget Sound Gateway Program to assess the feasibility of three potential routes to complete this regional connection. The partners selected an approximately 10-mile-long bicycle and pedestrian trail along the new SR 167 alignment as the preferred option to make this project a reality.

The following partners collaboratively funded the Route Analysis Study:

- Washington State Dept. of Transportation
- Puyallup Tribe of Indians
- City of Fife
- City of Puyallup
- City of Tacoma
- Metro Parks Tacoma
- Port of Tacoma
- Pierce County

Who will use it?

The trail will create connections, physically separated from vehicular traffic, for workers to commute from Puyallup to Tacoma on bicycle, or enable students to walk from the Fife Heights residential area to the Fife Community Center. This new trail will be designed for all users, regardless of age or ability.



Gateway bike and pedestrian facilities by the numbers

For planning purposes, WSDOT assumes a typical walkable distance is one mile and a typical bikeable distance is three to five miles.

For more information

John White

Puget Sound Gateway
Program Administrator

(206) 310-4838

WhiteJh@wsdot.wa.gov

Title VI Statement to Public: WSDOT ensures full compliance with Title VI of the Civil Rights Act of 1964 by prohibiting discrimination against any person on the basis of race, color, national origin or sex in the provision of benefits and services resulting from its federally assisted programs and activities. For additional information regarding WSDOT's Title VI Program, contact the Department's Title VI Coordinator at **360-705-7098**.

Americans with Disabilities Act (ADA)

Information: This material can be made available in an alternate format by emailing the Office of Equal Opportunity at wsdotada@wsdot.wa.gov or by calling toll free, **855-362-4ADA (4232)**. Persons who are deaf or hard of hearing may make a request by calling the Washington State Relay at **711**.

SR 509 Completion Project

Location	Sidewalks	Shared-Use Path	Bike Lanes
SR 516/Veteran's Drive	0.5 mi	0.6 mi	
S. 216th St. overpass	0.3 mi		0.3 mi
Madrona - S. 206th/208th/34th streets	0.9 mi		
S 188th / Des Moines Memorial Dr.		0.3 mi	
Lake to Sound Trail (from 200th St. to Des Moines Memorial Dr.)		1.8 mi	
Total	1.7 mi	2.7 mi	0.3 mi

SR 167 Completion Project

Location	Sidewalks	Shared-Use Path	Bike Lanes
Interurban Trail to the new trailhead parking		0.5 mi	
Trailhead parking to SR 99 (segment within Tacoma to Puyallup Trail corridor)		0.4 mi	
SR 99 to 8th St. (segment within Tacoma to Puyallup Trail corridor)		0.8 mi	
8th St. to Alexander Ave. (segment within Tacoma to Puyallup Trail corridor)		1.4 mi	
8th St.		0.1 mi	
SR 99	0.2 mi	0.5 mi	0.2 mi
20th St.	0.3 mi		
12th St.	0.2 mi		0.3 mi
54th Ave.	0.2 mi		
Alexander Ave.	0.2 mi		
Freeman Rd.	0.4 mi		0.4 mi
Valley Ave.	0.3 mi		0.5 mi
Total	1.8 mi	3.7 mi	1.4 mi

Tacoma to Puyallup Trail (unfunded segments)

Location	Shared-Use Path
20th St.	0.1 mi
20th St. to Freeman Rd.	1.7 mi
Freeman Rd. to Meridian Ave.	1.7 mi
Alexander Ave. to East D St.	3.4 mi
Total	6.9 mi