

# Chapter 700 Project Development Roles and Responsibilities for Projects with Structures

---

700.01 General  
700.02 Procedures

Exhibit 700-1 Determination of the Roles and Responsibilities for Projects with Structures: Project Development Phase

## 700.01 General

This chapter presents the project development process used by the Washington State Department of Transportation (WSDOT) in the regions and the Headquarters (HQ) Bridge and Structures Office to determine the roles and responsibilities for projects with structures during the project development phase of a project. This chapter complements WSDOT's *Project Management Guide*: [Project management guide | WSDOT \(wa.gov\)](#)

For design procedures, see Division 7 chapters and the [Bridge Design Manual](#).

The primary objective of this process is to provide a consistent means of selecting a bridge design team to perform the structural design work, whether it is by a consultant or the HQ Bridge and Structures Office.

If the local agency will be requesting any services from WSDOT, the local agency will contact WSDOT's Local Programs Engineer, who will help define the level of WSDOT's involvement in design and construction.

## 700.02 Procedures

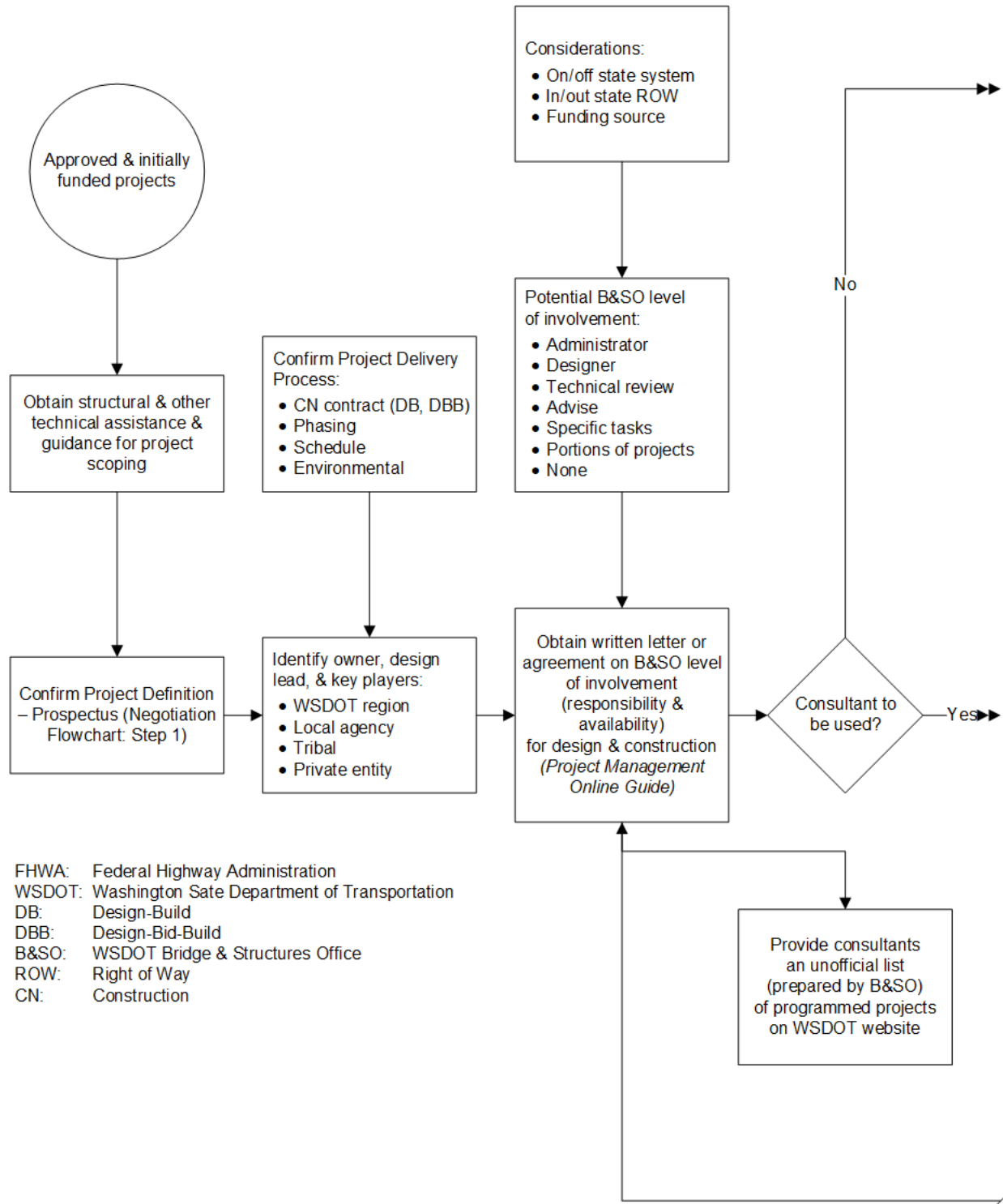
The flow diagram (see [Exhibit 700-1](#)) begins at the left with the initial approval and funding of the project and ends at the right with the start of the project delivery process.

After a project is programmed, WSDOT is tasked with confirming the project scope and defining the structural team's level of involvement in design and construction. Structural support will be provided by the Bridge and Structures Office. The Bridge and Structures Office may procure or recommend the Region procure a consultant as needed. If a consultant is used, the region and the HQ Bridge and Structures Office will determine the level of involvement and responsibility for the design, including scope and level of effort.

Agreements defining the level of involvement and responsibility will be developed and executed between the region office responsible for project development and the HQ Bridge and Structures Office, and the appropriate project delivery process will be implemented.

More information on this process and the desired outcomes is available on the WSDOT website under the Structures Design Topic : [Preliminary design, plan preparation & specifications | WSDOT \(wa.gov\)](#)

Exhibit 700-1 Determination of the Roles and Responsibilities for Projects with Structures: Project Development Phase



FHWA: Federal Highway Administration  
 WSDOT: Washington State Department of Transportation  
 DB: Design-Build  
 DBB: Design-Bid-Build  
 B&SO: WSDOT Bridge & Structures Office  
 ROW: Right of Way  
 CN: Construction

