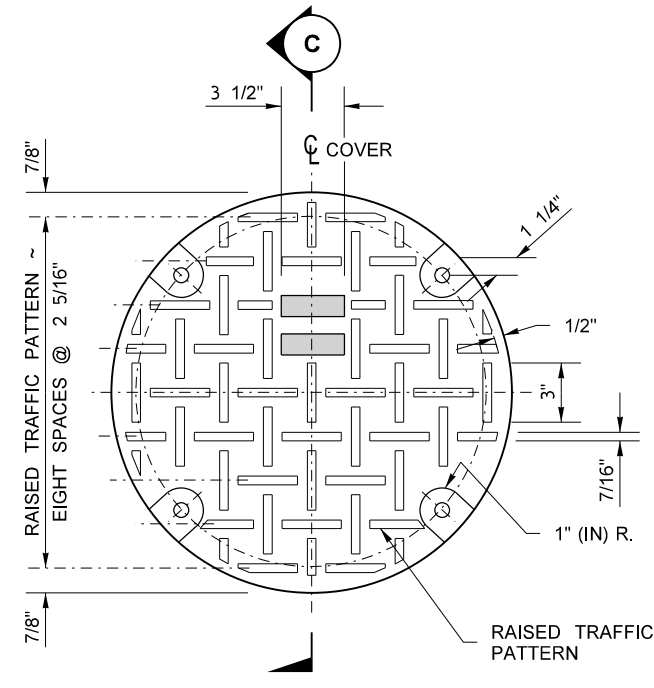
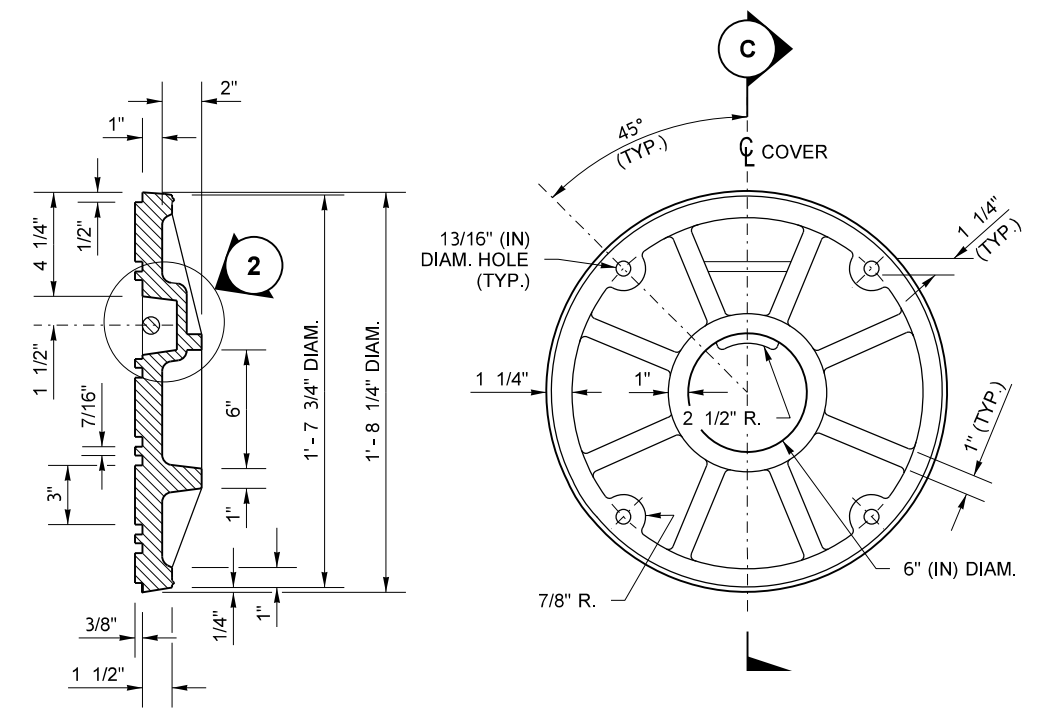


**TOP VIEW
RING AND COVER**

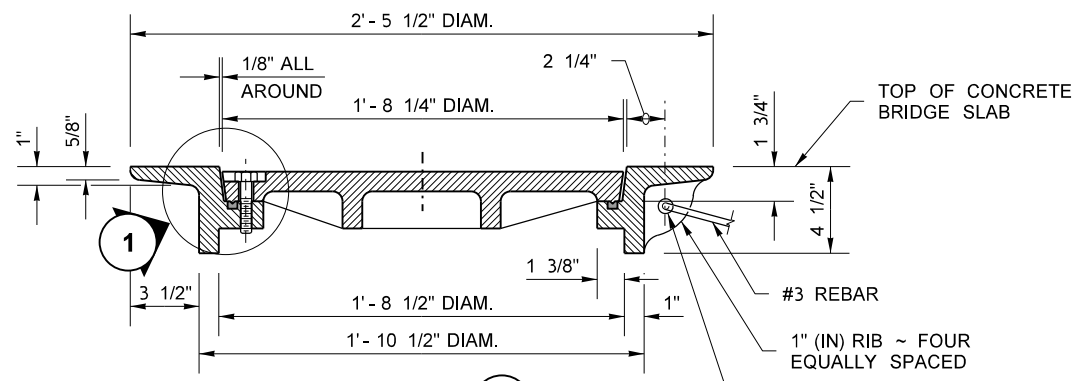


TOP VIEW



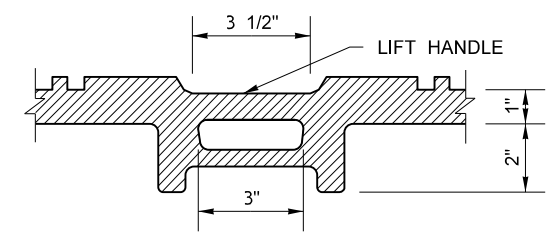
**SECTION C
MANHOLE COVER**

BOTTOM VIEW

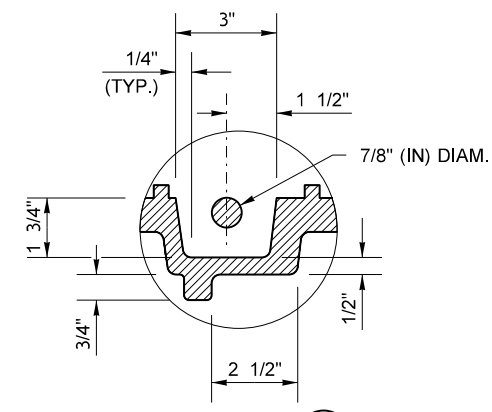


SECTION A

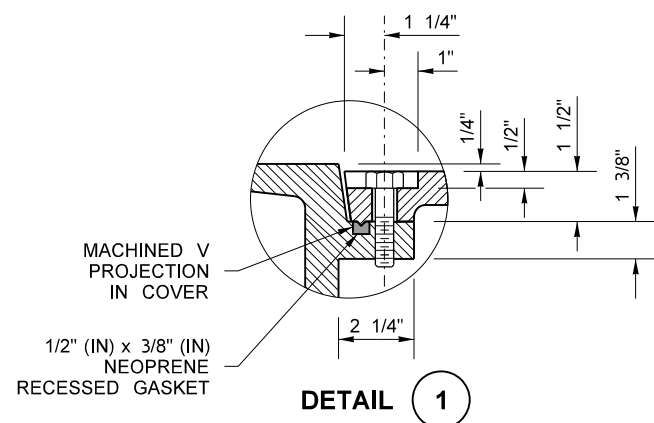
(RAISED TRAFFIC PATTERN NOT SHOWN)



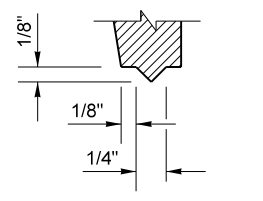
SECTION B



**DETAIL 2
(TURNED 90°)**



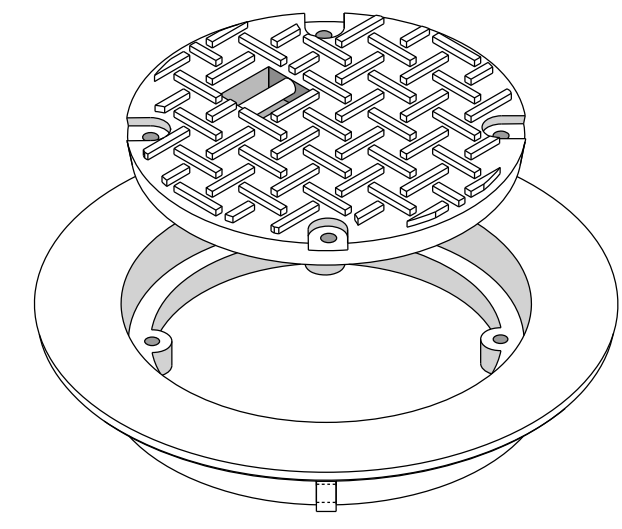
DETAIL 1



**V PROJECTION
DETAIL**

NOTE

APPROXIMATE WEIGHTS:	RING	173 LBS
	COVER	123 LBS
	TOTAL	296 LBS



ISOMETRIC VIEW

FILE NAME S:\Desgn R P& S\4-Standards\2-Plan Sheet Library\01-Published PSL(DS) Drainage Structures and Hydraulics\W(DS-6) Manhole Ring and Cover for Bridges\DS-6.dgn				REGION NO.		STATE		FED.AID PROJ.NO.		DATE		P.E. STAMP BOX		DATE		PLOT 1	
TIME 1:52:37 PM				WASH												PLAN REF NO	
DATE 10/2/2014																DS-6	
PLOTTED BY FletcCo																SHEET	
DESIGNED BY																1	
ENTERED BY																OF	
CHECKED BY																1	
PROJ. ENGR.																SHEETS	
REGIONAL ADM.				REVISION		DATE		BY								RING AND COVER FOR BRIDGES	