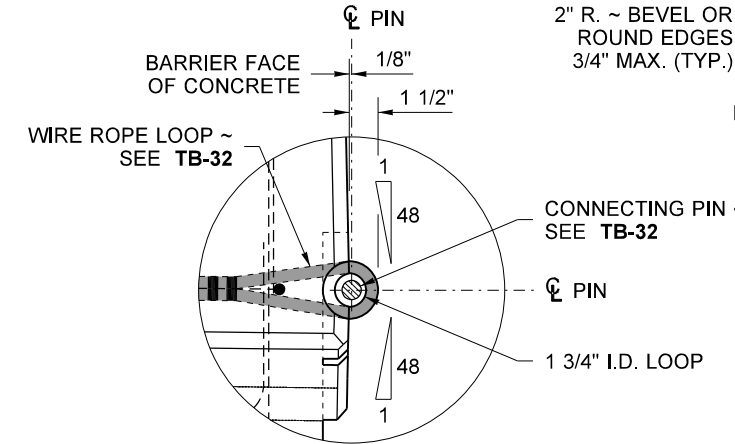


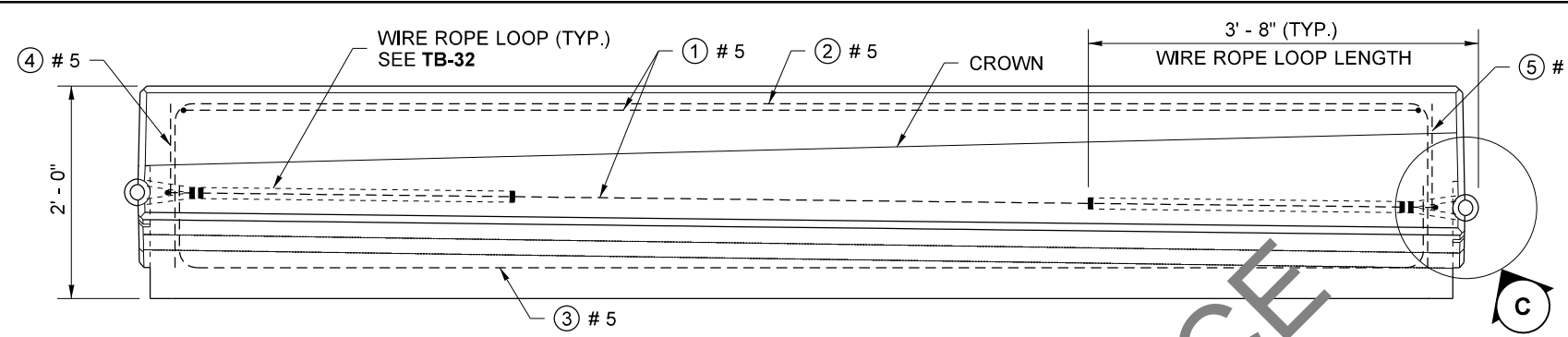
CONCRETE BARRIER TYPE 2 (NJ-SHAPE)

END VIEW

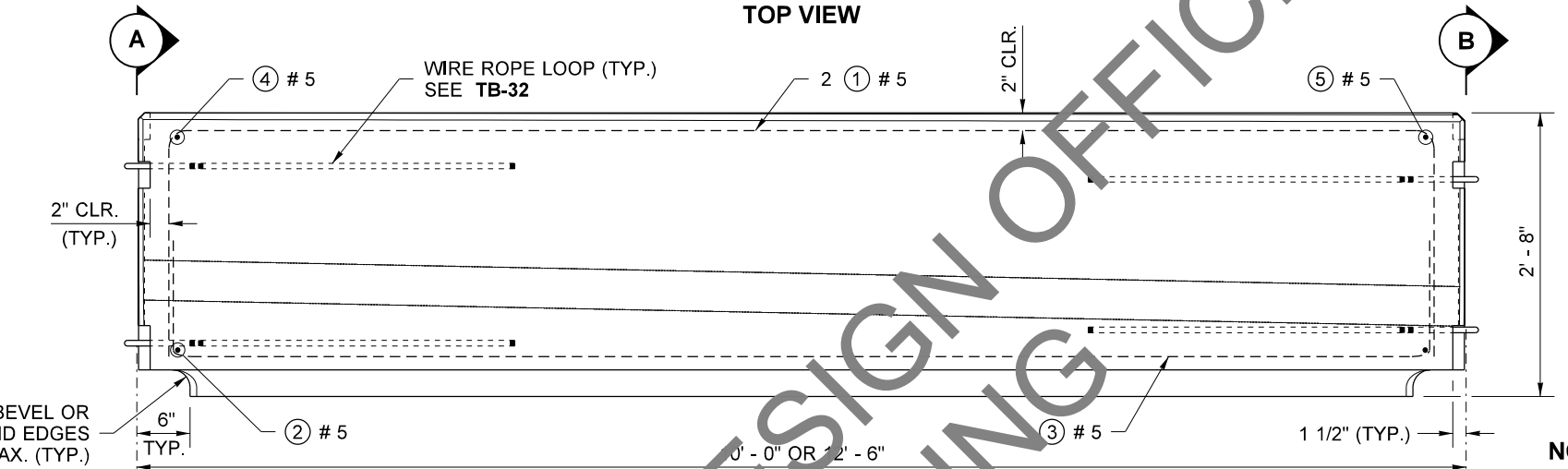


TYPICAL ~ BOTH ENDS

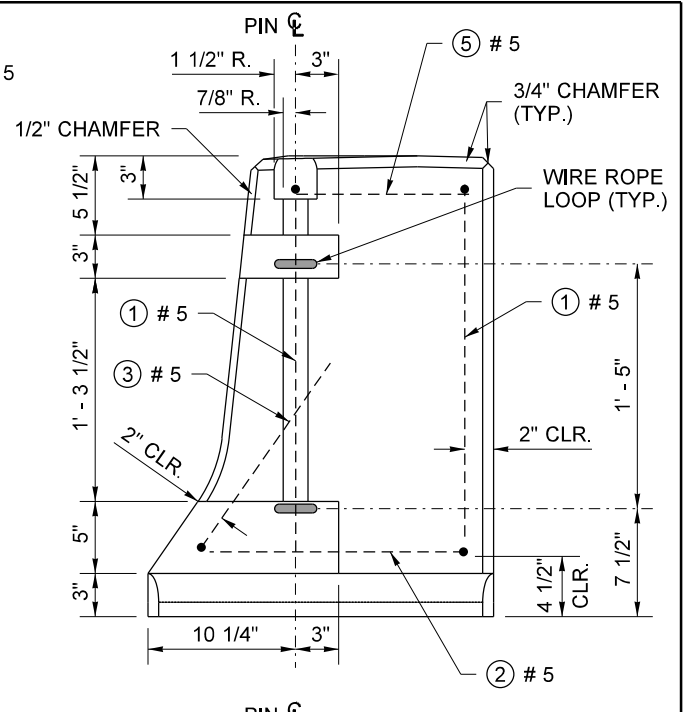
DETAIL C



TOP VIEW



TRAFFIC-SIDE VIEW
TRANSITION SECTION

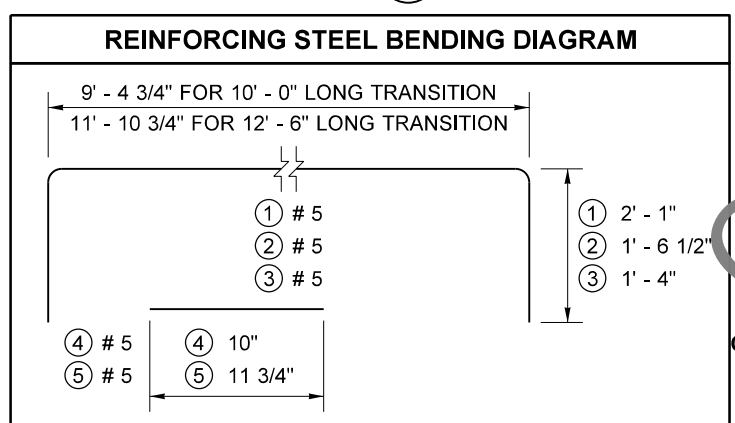


BRIDGE F-SHAPE TRAFFIC BARRIER

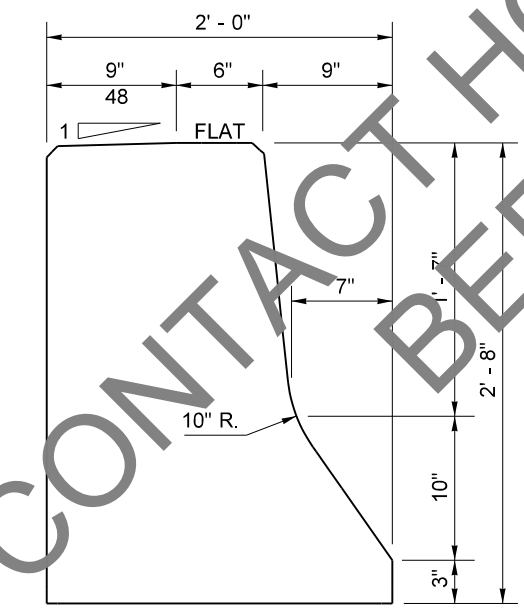
END VIEW

NOTE

The vertical locations of the Wire Rope Loops at one end compose a set that shall not vary; however, whichever set is applied to an end is determined by the end to which it is being connected. A set with loops 1' - 5" apart connects to a set with loops 1' - 8" apart. See TB-32, BARRIER CONNECTION DETAIL.



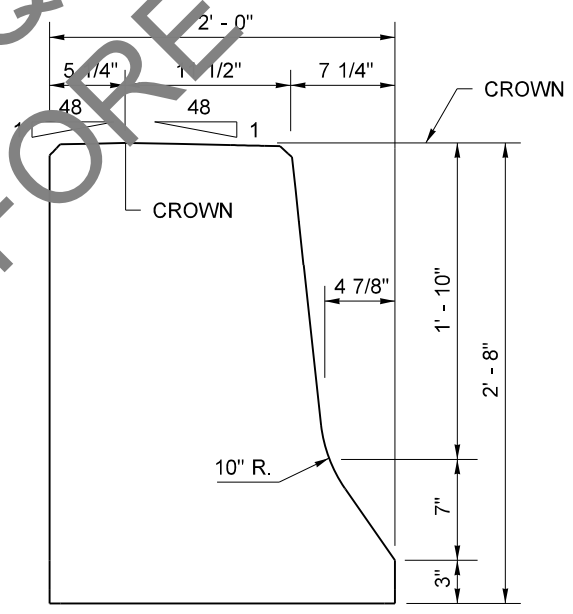
REINFORCING STEEL BENDING DIAGRAM



CONCRETE BARRIER TYPE 2 (NJ-SHAPE)

SECTION A

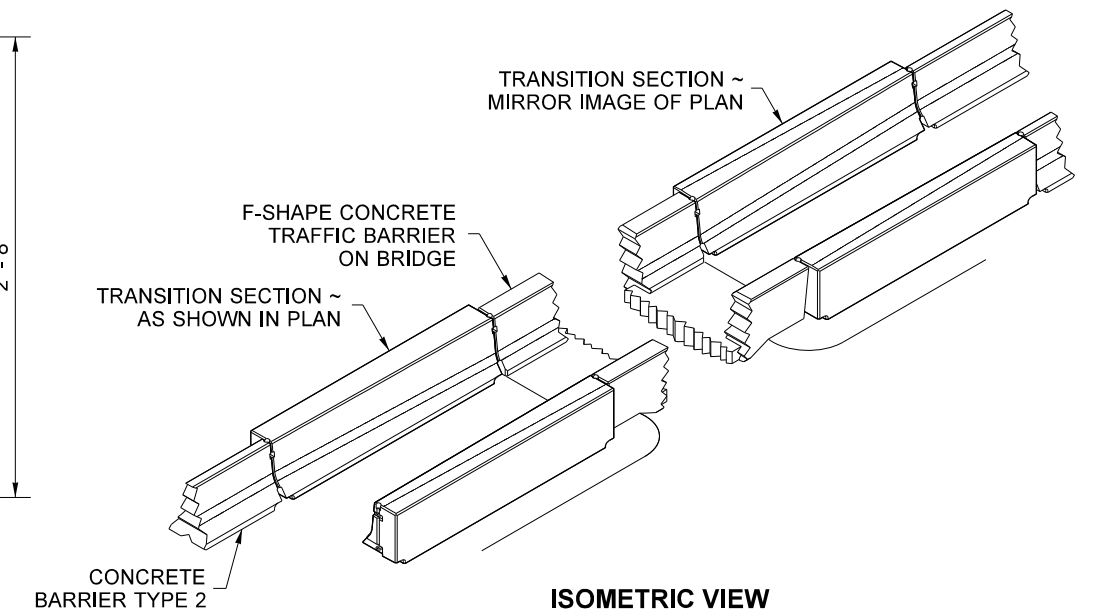
(SHOWN AT LIMIT OF TRANSITION)



BRIDGE F-SHAPE TRAFFIC BARRIER

SECTION B

(SHOWN AT LIMIT OF TRANSITION)



ISOMETRIC VIEW

FILE NAME S:\Design R P& S\4-Standards\2-Plan Sheet Library\01-Master_PSL\TB Traffic Barrier\TB (C-conversions) for 2022\TB-106(c8f).e.dgn		REGION NO.	STATE	FED. AID PROJ. NO.	Washington State Department of Transportation	CONCRETE BARRIER TRANSITION TYPE 2 TO BRIDGE F-SHAPE	TB-106
TIME 3:36:42 PM	DATE 7/13/2022	10	WASH				
PLOTTED BY liddelf	DESIGNED BY	JOB NUMBER		LOCATION NO.	SHEET 1 OF 1 SHEETS		
ENTERED BY	CHECKED BY	CONTRACT NO.		DATE			
PROJ. ENGR.	REGIONAL ADM.	REVISION	DATE	BY	P.E. STAMP BOX	P.E. STAMP BOX	