

10/28/16
 THIS DRAWING HAS BEEN PREPARED FOR YOUR REVIEW AND APPROVAL

- APPROVED AS SUBMITTED
- APPROVED AS CORRECTED
- RESUBMIT

PLEASE CHECK THE APPROPRIATE BOX AND RETURN ONE SIGNED COPY SO THAT WE MAY PROCEED WITH PRODUCTION.

SIGNED _____
 TITLE _____ DATE _____

BAR #	DESCRIPTION/SIZE	QTY.	COMMENT
R1	#3 BAR @ 40"	4	2" ϵ TO ϵ
R2	#3 BAR @ 32"	8	4" ϵ TO ϵ /1 EA CORNER
R3	#3 BAR @ 28"	4	2" ϵ TO ϵ
R4	#4 BAR @ 24" BEND @ 90°	8	SEE NOTE 1
R5	4X4 WWF W2.9XW2.9	1	32"x135"
R6	4X4 WWF W2.9XW2.9	1	41"x33"
R7	1/2" BRASS GROUNDING INSERT	1	ONE INTERNAL
R8	24" X 1 5/8" X 13/16" GALV. UNISTRUT	2	ONE EACH LONG WALL
R9	1/2" BONDING INSERT	1	IN LID

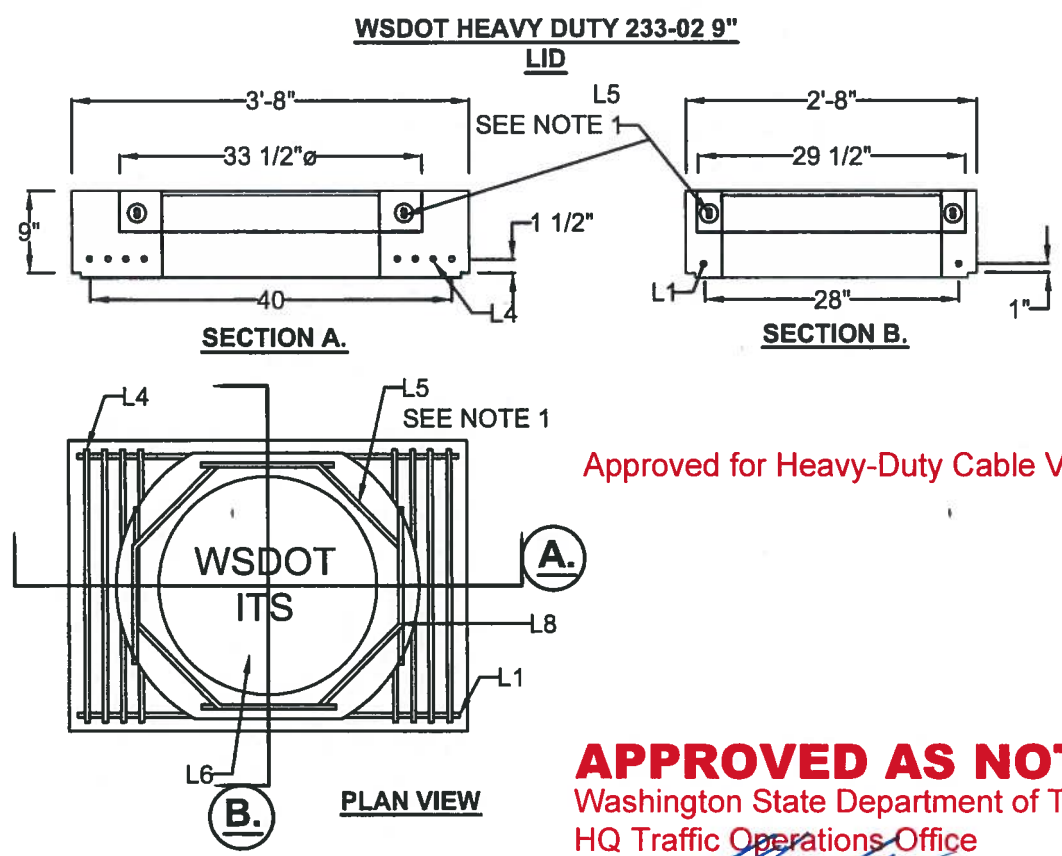
APPROVED AS NOTED
 Washington State Department of Transportation
 HQ Traffic Operations Office
 BY: [Signature] DATE: 3/27/2019

- NOTES:** Approved for Heavy-Duty Cable Vaults Only.
- 1.) 2 EA. CORNER 4" ϵ TO ϵ
 - 2.) 5/8" X 3/4" SS GROUND STUD WITH SS NUTS AND SS WASHERS SHALL BE ATTACHED TO BRASS GROUND LUG IN VAULT AND BONDING INSERT IN LID.
 - 3.) BRASS GROUNDING LUG AND BONDING INSERT TO BE ATTACHED VIA #8 MIN. X 4' (FT.) TINNED BRAIDED COPPER BONDING JUMPER.
 - 4.) ALL REBAR GRADE 60
 - 5.) f'c 4000 PSI MINIMUM

DRAWN: AH DATE: 10/27/16
 QC: JB SCALE: NTS
WSDOT 233 VAULT BASE
 PAGE: 1 of 2

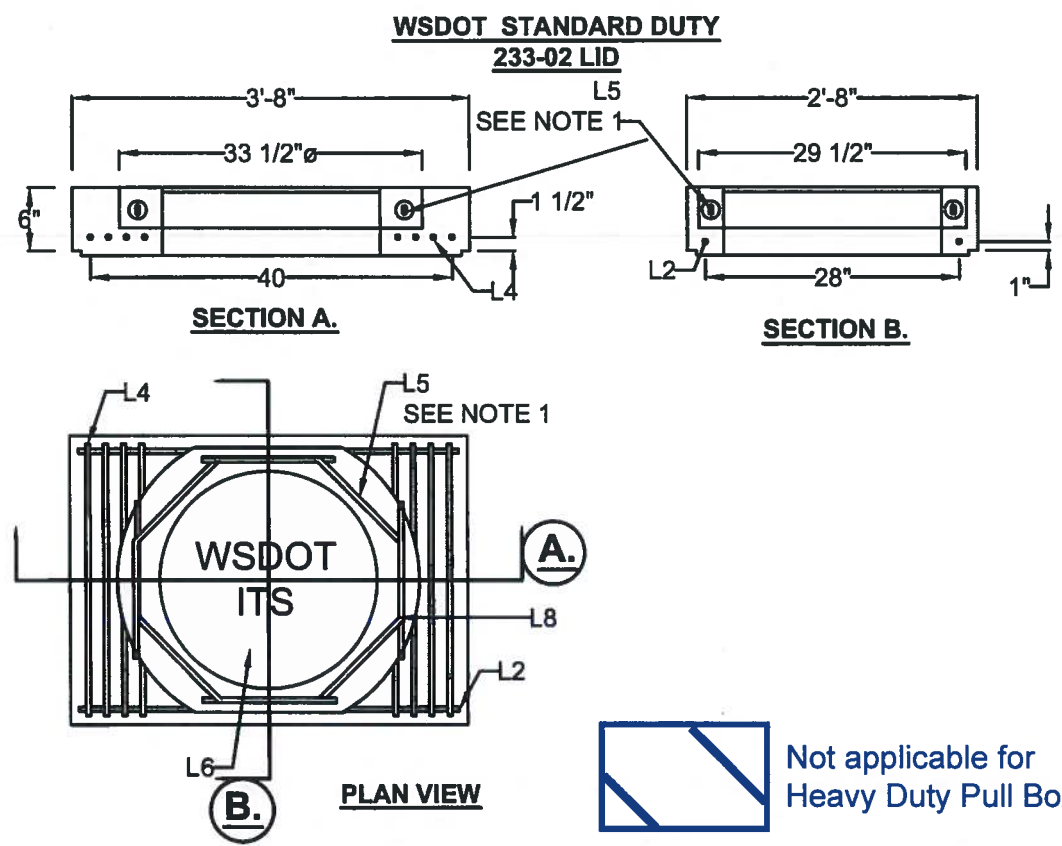
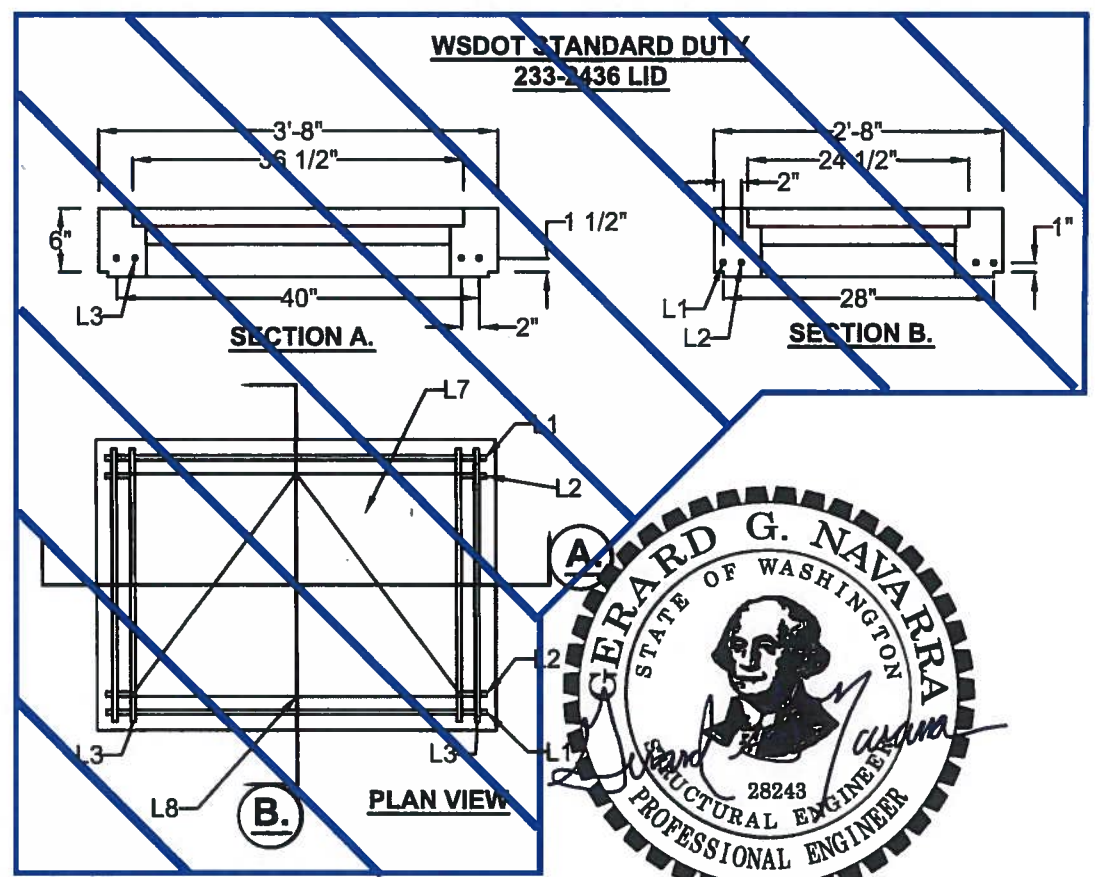
THIS DRAWING IS INTENDED FOR THE USE OF THE INDIVIDUAL TO WHICH IT IS ADDRESSED AND CONTAINS INFORMATION THAT IS PRIVILEGED, CONFIDENTIAL AND EXEMPT FROM DISCLOSURE. IF YOU ARE NOT THE INTENDED RECIPIENT, PLEASE DO NOT DISSEMINATE, DISTRIBUTE OR COPY THIS BY E-MAIL OR OTHERWISE.





Approved for Heavy-Duty Cable Vaults Only.

APPROVED AS NOTED
 Washington State Department of Transportation
 HQ Traffic Operations Office
 BY: *[Signature]* DATE: 3/27/2019



Not applicable for Heavy Duty Pull Box

- NOTES:**
- 1.) RUN THROUGH RING LOOPS IN CASTING
 - 2.) ALL REBAR GRADE 60
 - 3.) f'c 4000 PSI MINIMUM

BAR	DESCRIPTION/SIZE	QTY.	SPACING
L1	#6 BAR @ 42"	2	28" € TO €
L2	#5 BAR @ 42"	2	2" FROM L1
L3	#5 BAR @ 30"	4	2" O.C.
L4	#5 BAR @ 30"	8	2" O.C.
L5	#4 @ 36" BEND @ 45° 13" IN EA. SIDE	4	SEE NOTE 1
L6	EJIW WSDOT ITS 24" RING & COVER 3711ZPT	1	N/A
L7	INWESCO 2436 HATCH 35A152-A OR USE 2436 HATCH 56753	1	N/A
L8	1/2" BONDING INSERT	1	1 EACH LID

11/16/16

THIS DRAWING HAS BEEN PREPARED FOR YOUR REVIEW AND APPROVAL

APPROVED AS SUBMITTED
 APPROVED AS CORRECTED
 RESUBMIT

PLEASE CHECK THE APPROPRIATE BOX AND RETURN ONE SIGNED COPY SO THAT WE MAY PROCEED WITH PRODUCTION.

SIGNED _____
 TITLE _____ DATE _____

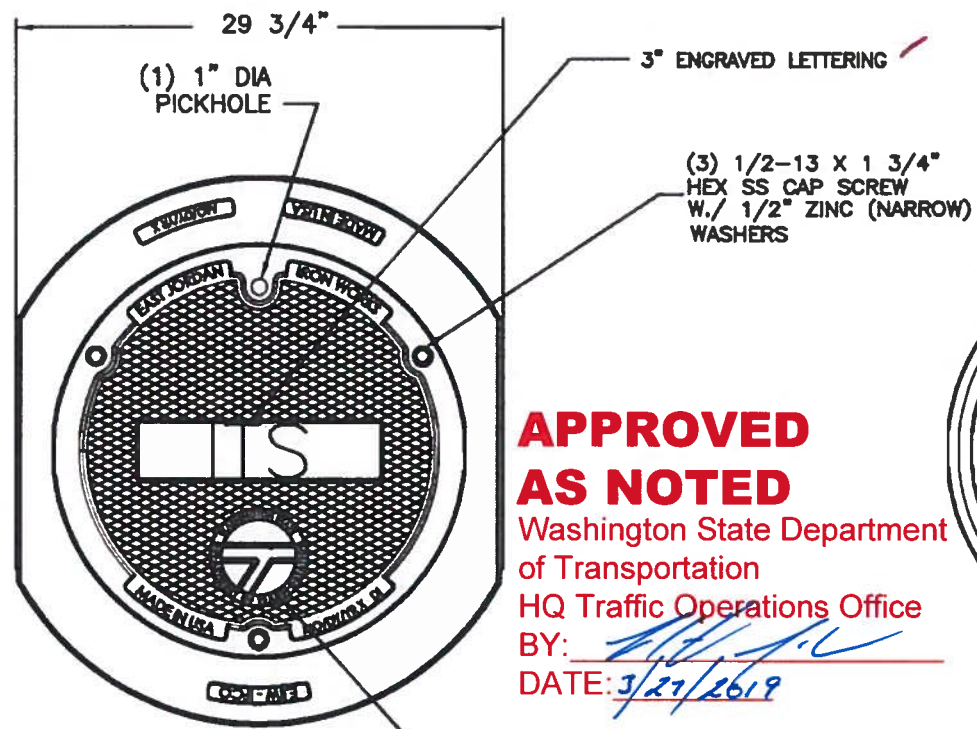
DRAWN: AH DATE: 11/16/16
 QC: JB SCALE: NTS

WSDOT 233 LIDS

PAGE: 2 of 2

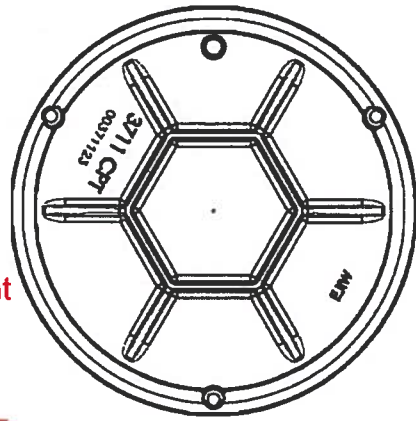
THIS DRAWING IS INTENDED FOR THE USE OF THE INDIVIDUAL TO WHICH IT IS ADDRESSED AND CONTAINS INFORMATION THAT IS PRIVILEGED, CONFIDENTIAL AND EXEMPT FROM DISCLOSURE. IF YOU ARE NOT THE INTENDED RECIPIENT, PLEASE DO NOT DISSEMINATE, DISTRIBUTE OR COPY THIS BY E-MAIL OR OTHERWISE.





PLAN VIEW

APPROVED AS NOTED
 Washington State Department of Transportation
 HQ Traffic Operations Office
 BY: *[Signature]*
 DATE: *3/27/2019*



COVER BOTTOM

Approved for Heavy-Duty Cable Vaults Only.

EJIW EAST JORDAN
 IRON WORKS EST. 1883
 800-626-4653
 www.ejiw.com
 MADE IN USA

PRODUCT NUMBER
00371101

CATALOG NUMBER
 3711CPT DI
 3711ZPT

MANHOLE ASSEMBLY

LOAD RATING
HEAVY DUTY

COATING
UNDIPPED

ESTIMATED WEIGHT
 FRAME: 133 LBS 60kg
 COVER: 99 LBS 45kg
 UNIT: 232 LBS 105kg

MATERIAL SPECIFICATION
 FRAME - CAST IRON
 ASTM A48 CL35B
 COVER - DUCTILE IRON
 ASTM A536

OPEN AREA
 N/A

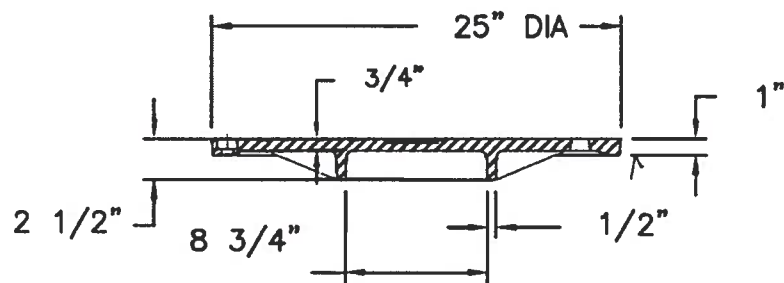
√ DESIGNATES MACHINED SURFACE

DRAWN DEW	DATE 05/13/06
--------------	------------------

LAST REVISED JJD	DATE 05/22/08
---------------------	------------------

REFERENCE INFORMATION

00371124
 00371113

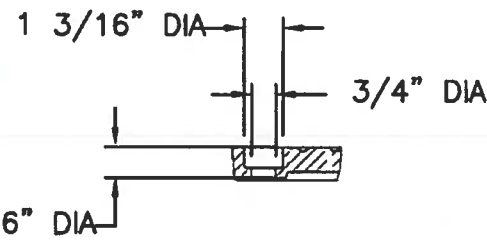


TYP COVER SECTION

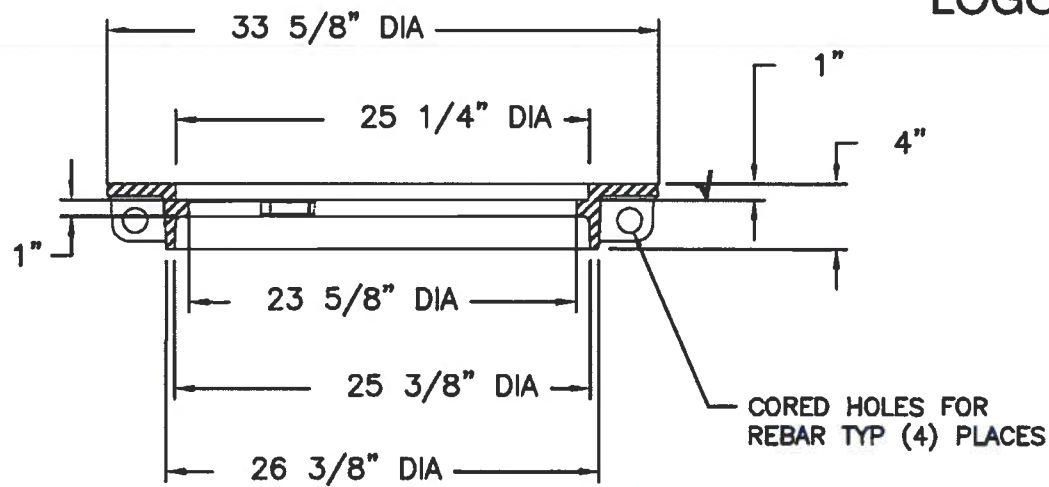


LOGO DETAIL

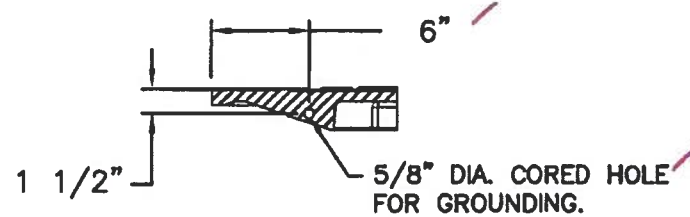
APPROVED
 Washington State Department of Transportation
 HQ Traffic Operations Office
 DATE: *December 2, 2009*
 HD Pull Box
TAT



BOLT HOLE DETAIL



FRAME SECTION



GROUND STRAP HOLE

CONFIDENTIAL: This drawing is the property of East Jordan Iron Works, Inc. and embodies confidential information, trade secret information, and/or know how that is the property of East Jordan Iron Works, Inc. © Copyright 2007 East Jordan Iron Works, Inc.