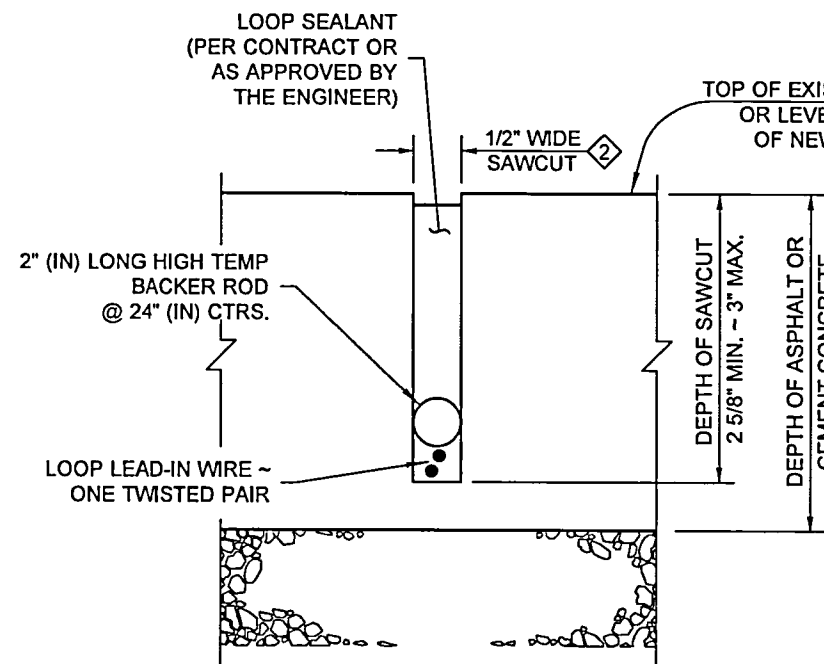
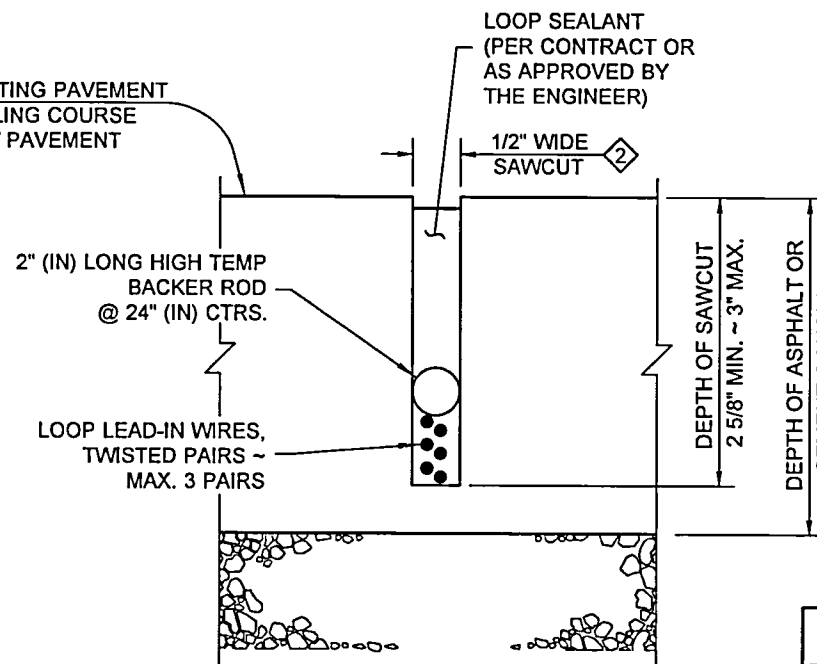


SECTION A



SECTION B



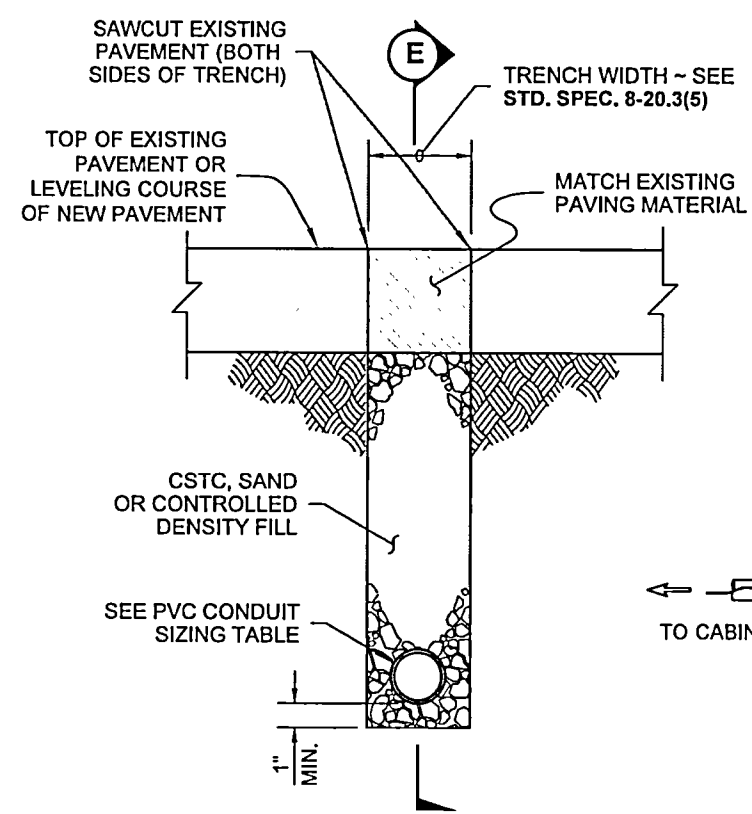
SECTION C

SECTIONS A AND B FROM STANDARD PLAN J-50.10, J-5-11, OR J-50.12

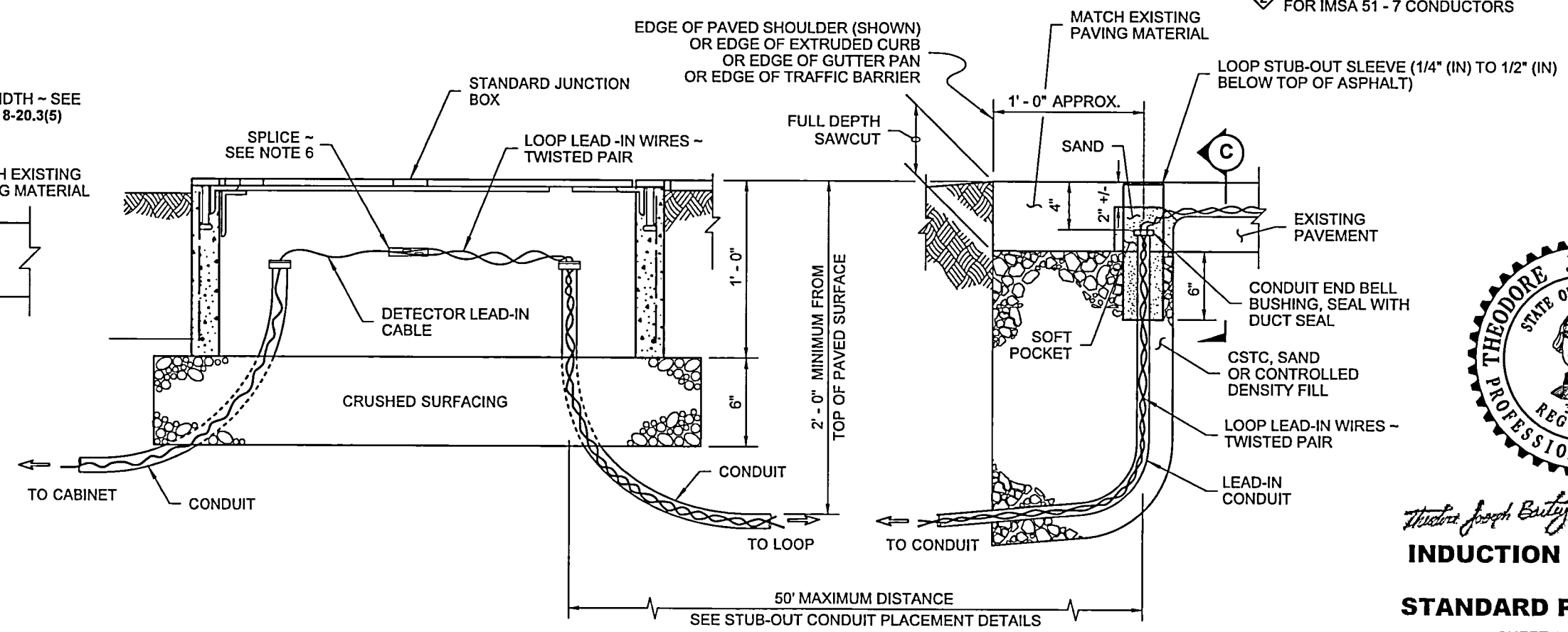
- NOTES**
1. Fill the conduit trench to the bottom of the existing or new surfacing with CSTC, sand or controlled density fill. See **Standard Specifications Section 2-09.3(1)E**.
 2. Minor Regional variations are allowed in the soft pocket closure. Consult with the Engineer or see the Contract for additional requirements.
 3. Conductors shall be snug to the bottom of the sawcut. High temperature backer rod shall be snug to the conductors and sides of cut.
 4. Fill the sealant to within 1/8" (in) to 3/16" (in) from top of saw cut.
 5. See **Standard Plan J-40.10** for additional Junction Box details.
 6. See **Standard Plan J-50.05** for splice details.

PVC CONDUIT SIZING TABLE					
LOOP LEAD PAIRS	1 - 4	5 - 10	11 - 16	17 - 22	23 - 28
NUMBER AND SIZE OF CONDUITS	1 - 2"	2 - 2"	3 - 2"	4 - 2"	3 - 3"

- ① ADD 1/16" (IN) TO THE SAWCUT FOR IMSA 51 - 7 CONDUCTORS
- ② ADD 1/8" (IN) TO THE SAWCUT FOR IMSA 51 - 7 CONDUCTORS



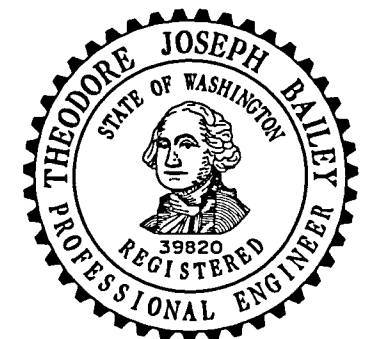
SECTION D



JUNCTION BOX PLACEMENT
SEE NOTE 5

SECTION E

LEAD-IN CONDUIT SECTION
MAX. 50 FT POCKET SECTION



Theodore Joseph Bailey Bailey, Ted
Jul 18 2017 9:57 AM

INDUCTION LOOP DETAILS

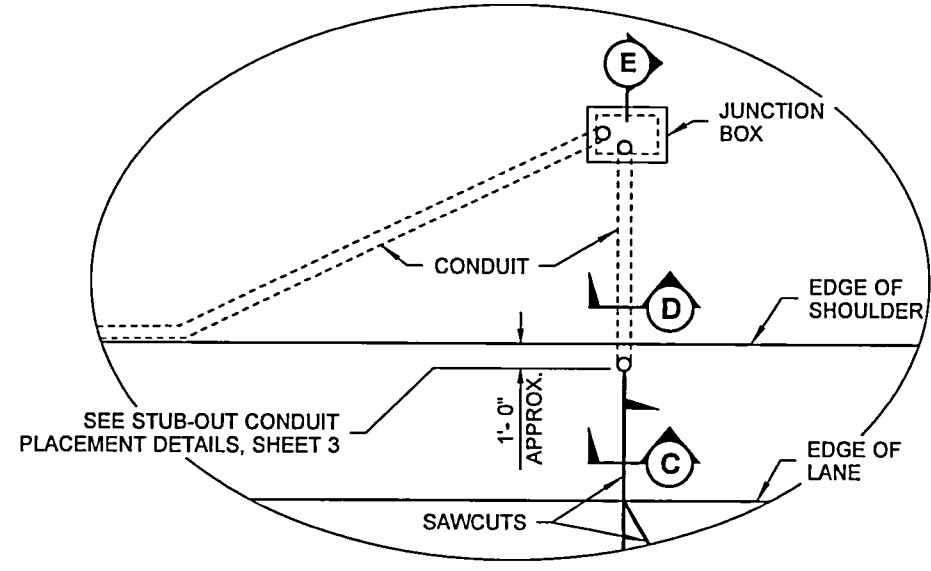
STANDARD PLAN J-50.15-01

SHEET 1 OF 3 SHEETS

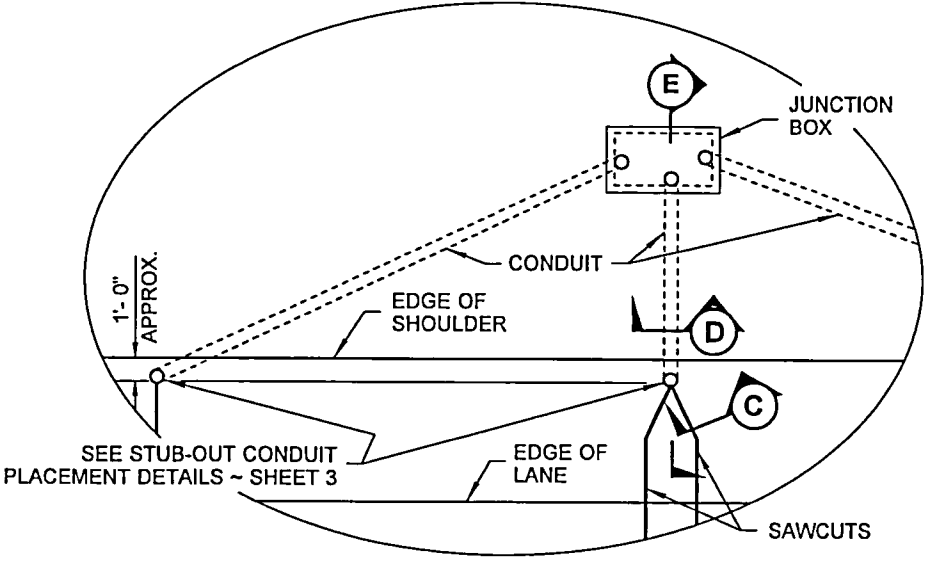
APPROVED FOR PUBLICATION
Carpenter, Jeff
Jul 21 2017 8 12 AM
STATE DESIGN ENGINEER
Washington State Department of Transportation

LOOP INSTALLATION NOTES

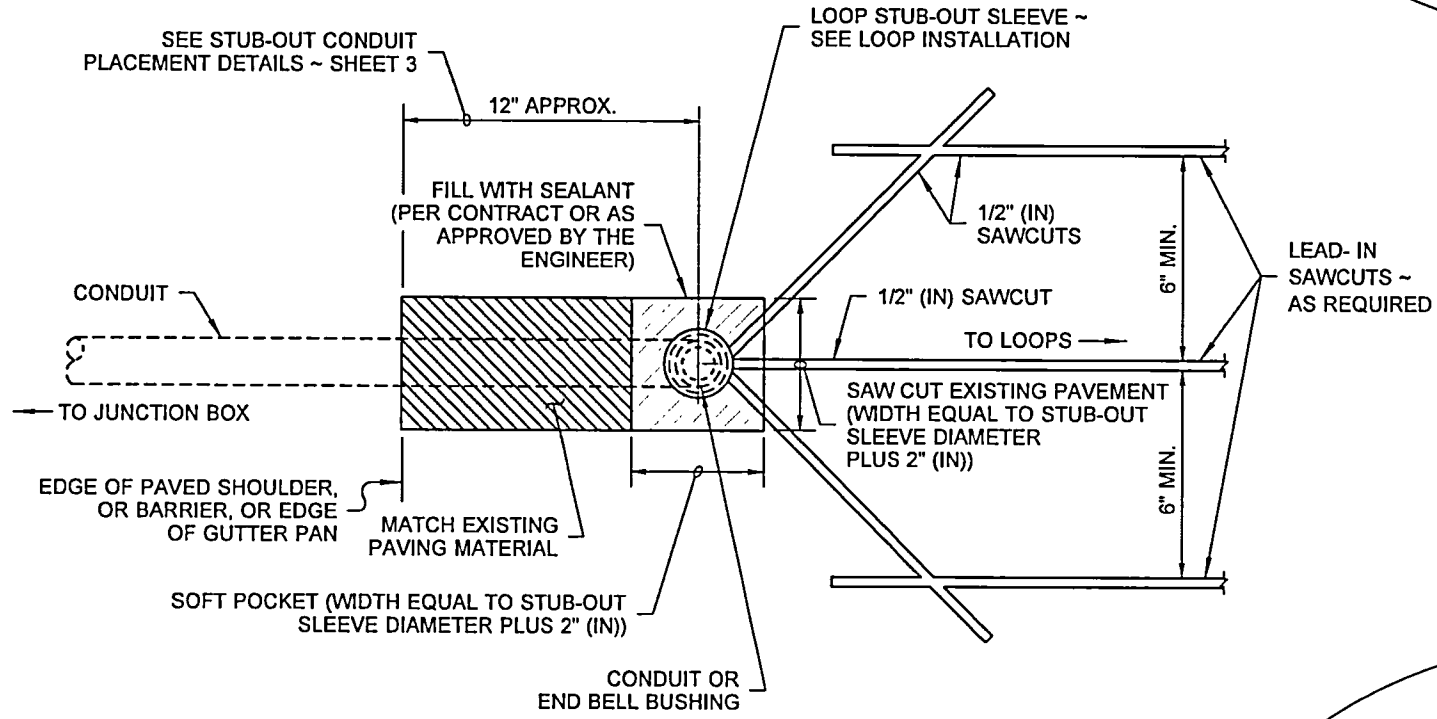
1. Install the Junction Box and the stub-out conduit with Sch. 80 PVC stub-out sleeve. Conduit for the loop stub-out shall be as required in the conduit size table shown on sheet 1 of this set.
2. Lay out loops and loop lead-ins to miss cracks/joints in road, when possible. Maintain 18" (in) minimum clearance from manholes and valve boxes.
3. The opening around the loop stub shall be patched with matching paving material if opened larger than PVC sleeve + 2" (in).
4. Sawcut the loop slots and the lead-in slots. Wash/dry cuts. File edges to remove burr of all saw-cuts into stub out sleeve.
5. Lay out the loop wire starting at the Junction Box, allowing 5' (ft) minimum slack.
6. Install the wire in the loop slot as shown.
7. Finish laying out the wire at the Junction Box and identify the leads with the loop number, the "S" for start and the "F" for the finish, the loop series number, and the loop lead-in conductor number.
8. Twist each pair of the lead-in wires a minimum of two times per foot each foot, from the loop to the Junction Box. Reverse the direction of the twist for each successive pair installed. Seal loops/sawcuts.
9. Construct a supplemental splice containing any series loop connections in the adjacent junction box as required in the plans. Supplemental splices are subject to the same requirements shown for the loop lead-in and the shielded cable splice.
10. Splice the loop lead-ins to the shielded cable as noted in the Contract. See **Standard Plan J-50.05** for Loop Splice details.
11. All loop circuits shall be tested per **Standard Specification Section 8-20.3(14)D** once installation is complete.
12. Existing stub-out shall be upgraded as necessary to conform to the conduit size table shown on sheet 1.
13. All loop lead-in sawcuts parallel to lane edge shall be at least 12" (in) from edge of pavement and within six inches outside of lane or fog line when possible. Maintain 12" (in) separation between parallel cuts or joints.
14. The loop stub-out sleeve shall have an inside diameter 1" (in) larger than the outside diameter of the End Bell Bushing. Sleeve shall be notched 5/8" (in) to 3/4" (in) to accommodate loop wires. Plug conduit and fill sleeve with sand until loops are installed to keep out Hot Asphalt during paving operations.



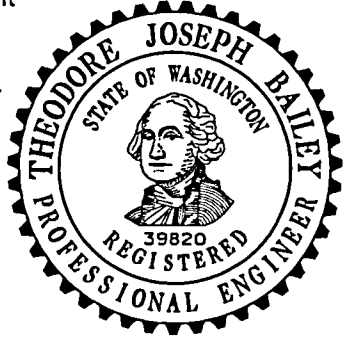
DETAIL "A"



DETAIL "B"



PLAN SAWCUT AND CONDUIT CONNECTION



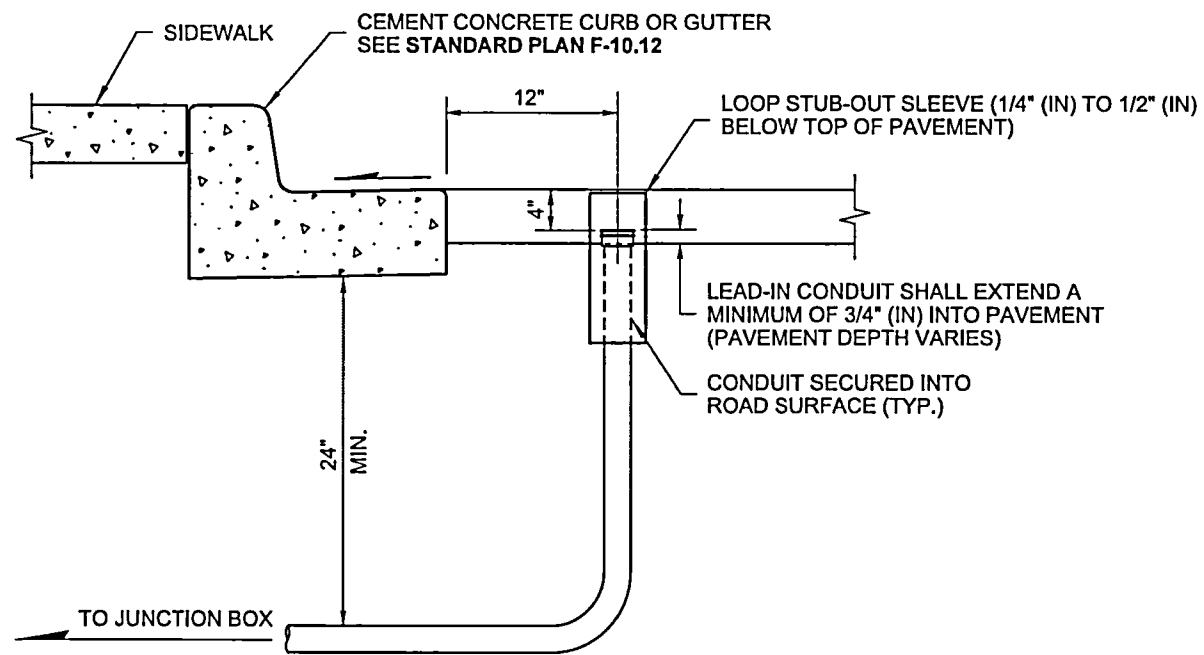
Theodore Joseph Bailey Bailey, Ted
Jul 18 2017 9:57 AM

INDUCTION LOOP DETAILS

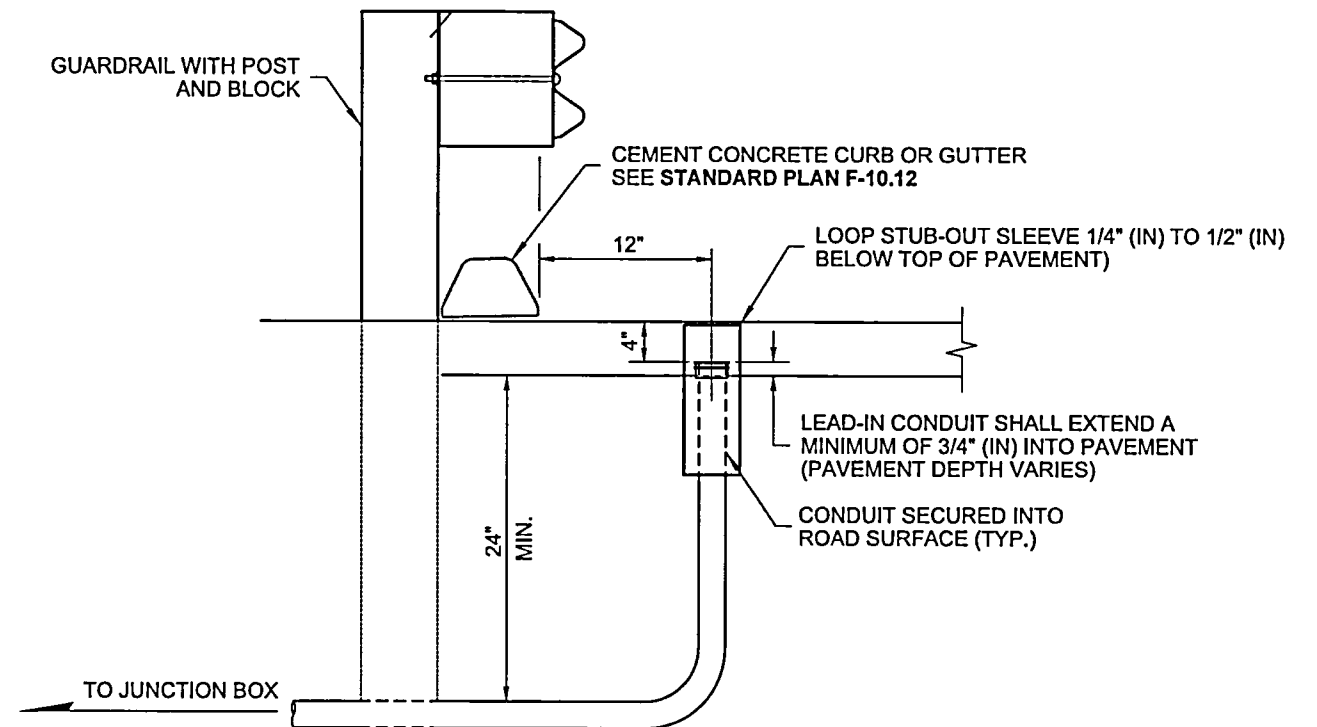
STANDARD PLAN J-50.15-01

SHEET 2 OF 3 SHEETS

APPROVED FOR PUBLICATION	
<i>Jeff Carpenter</i>	Carpenter, Jeff Jul 21 2017 8 12 AM
STATE DESIGN ENGINEER	
Washington State Department of Transportation	

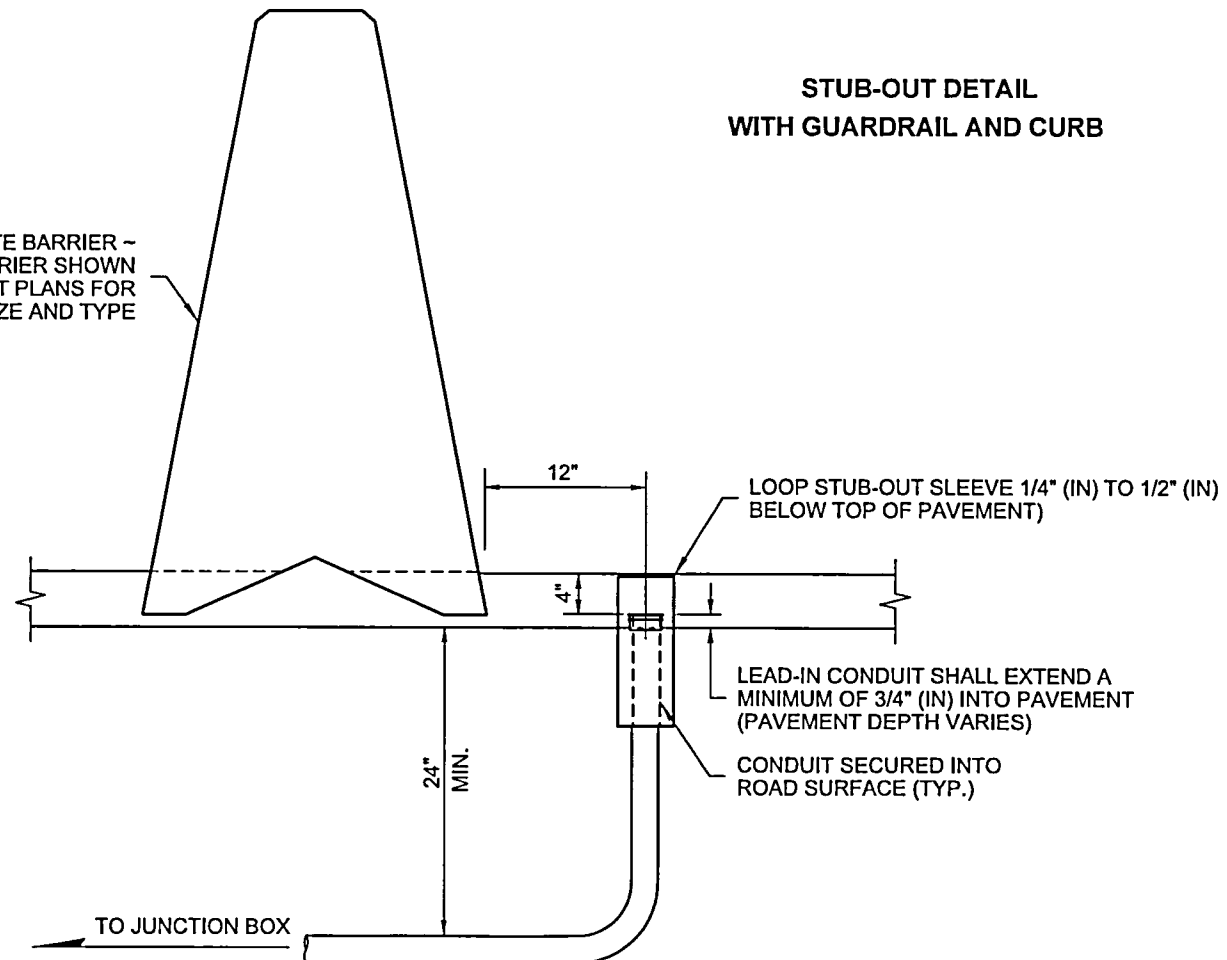


STUB-OUT DETAIL
WITH CEMENT CONCRETE CURB OR GUTTER

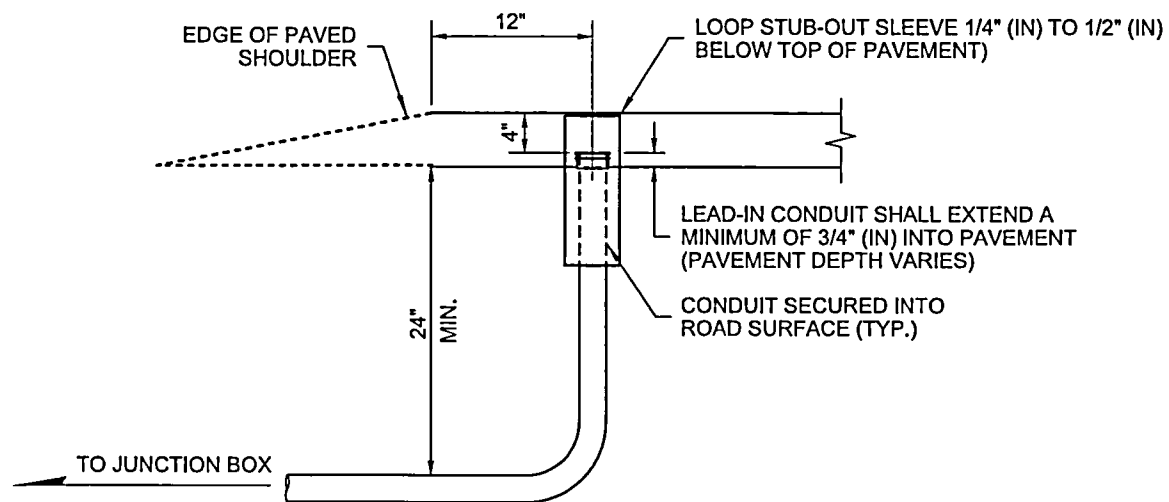


STUB-OUT DETAIL
WITH GUARDRAIL AND CURB

CEMENT CONCRETE BARRIER - SINGLE SLOPE BARRIER SHOWN SEE CONTRACT PLANS FOR SIZE AND TYPE

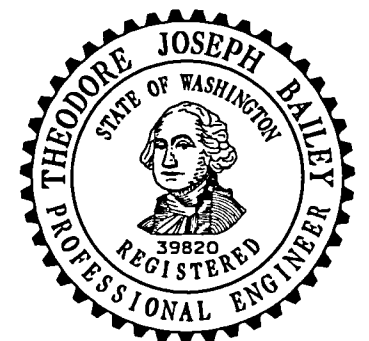


STUB-OUT DETAIL WITH
CEMENT CONCRETE BARRIER



STUB-OUT DETAIL
WITH ROADWAY

STUBOUT CONDUIT PLACEMENT DETAILS



Theodore Joseph Bailey Bailey, Ted
Jul 18 2017 9:57 AM

INDUCTION LOOP DETAILS

STANDARD PLAN J-50.15-01

SHEET 3 OF 3 SHEETS

APPROVED FOR PUBLICATION

Jeff Carpenter Carpenter, Jeff
Jul 21 2017 8 12 AM

STATE DESIGN ENGINEER

