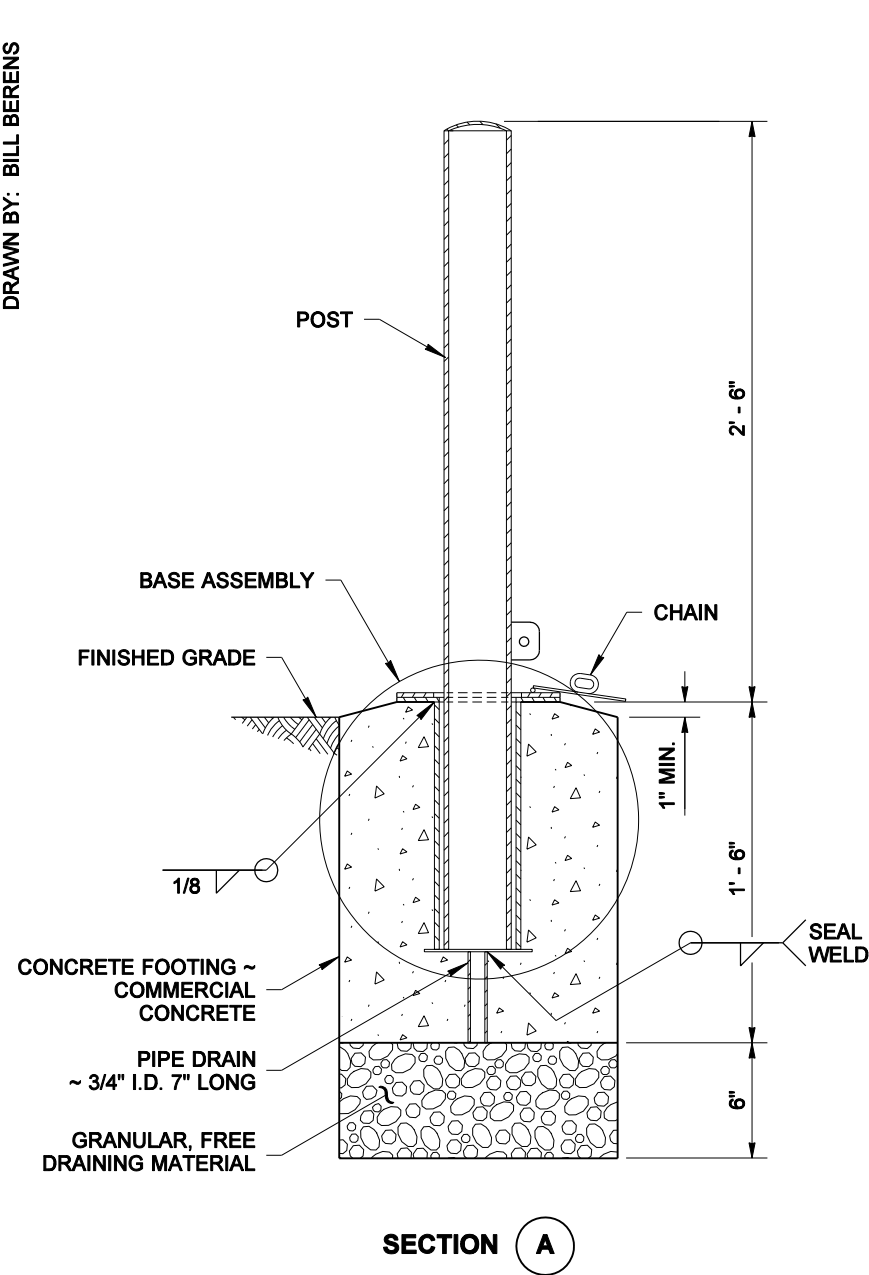
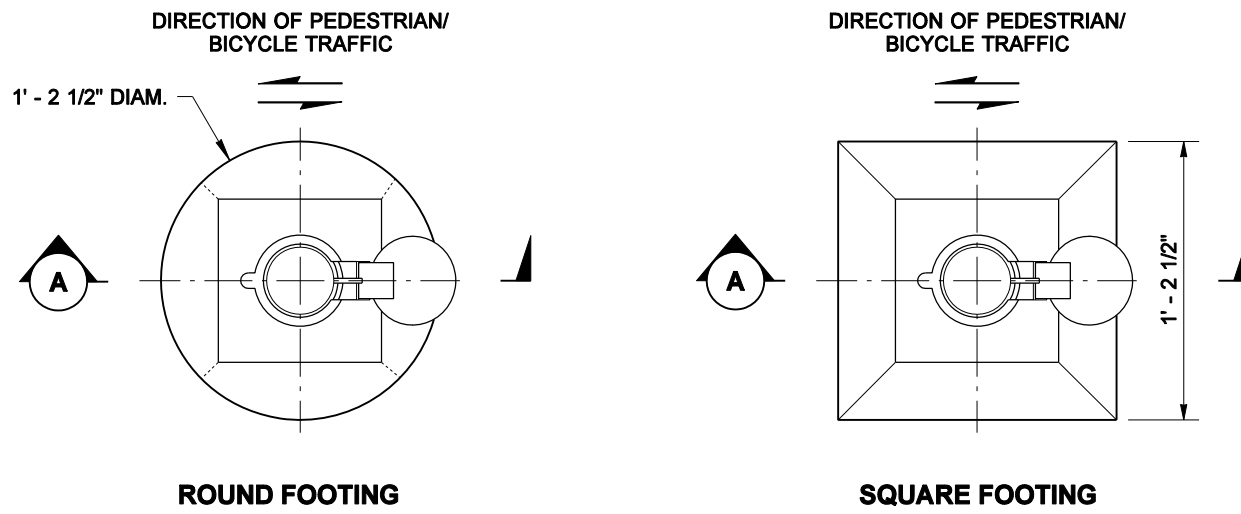


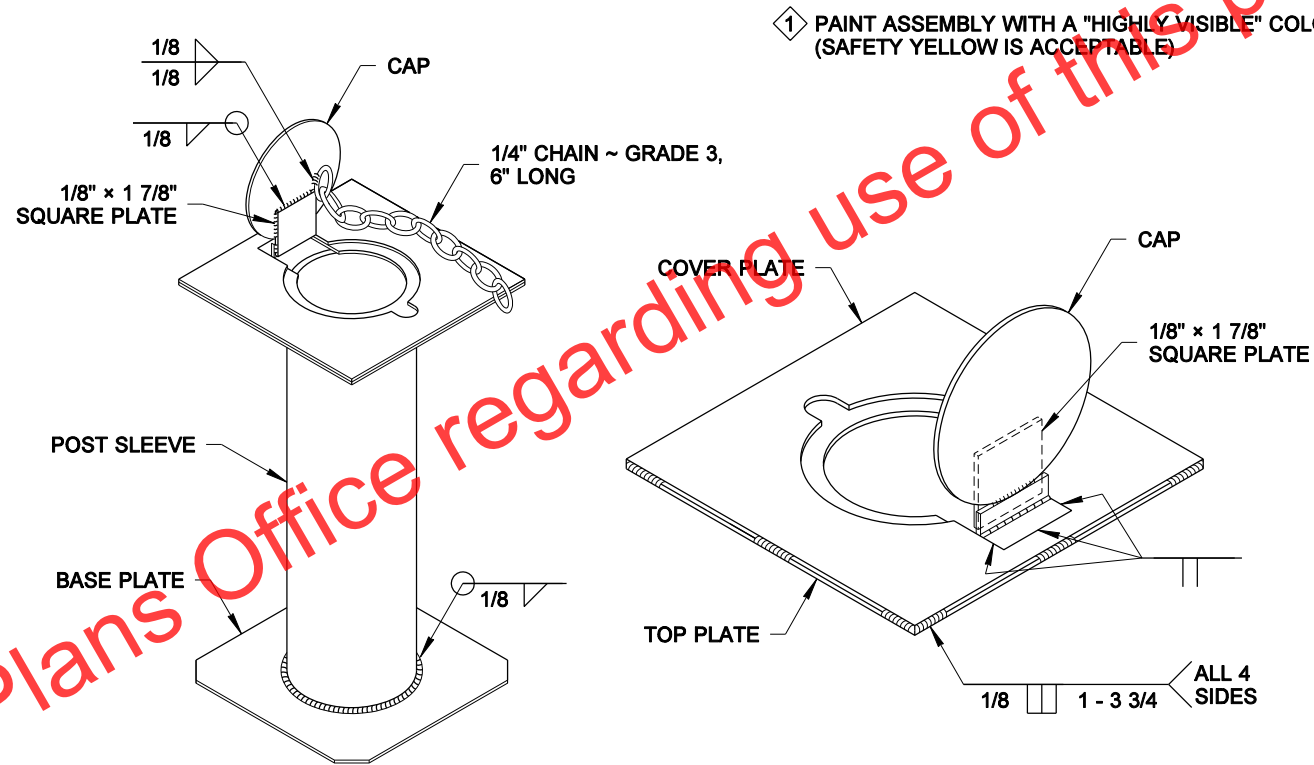
DRAWN BY: BILL BERENS



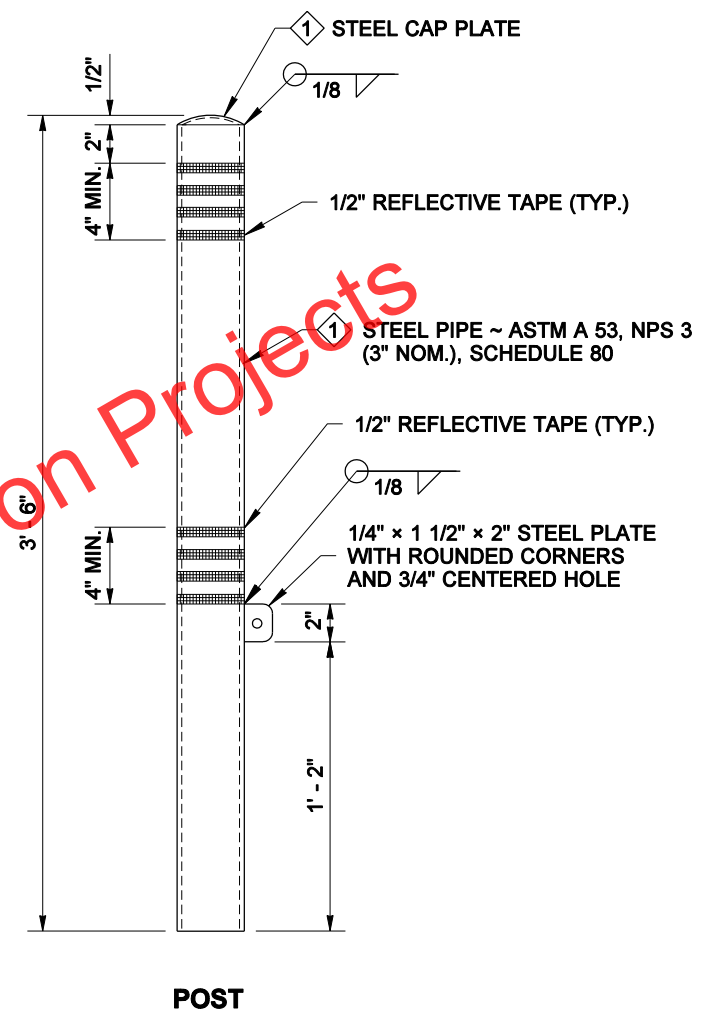
SECTION A



PLAN VIEW



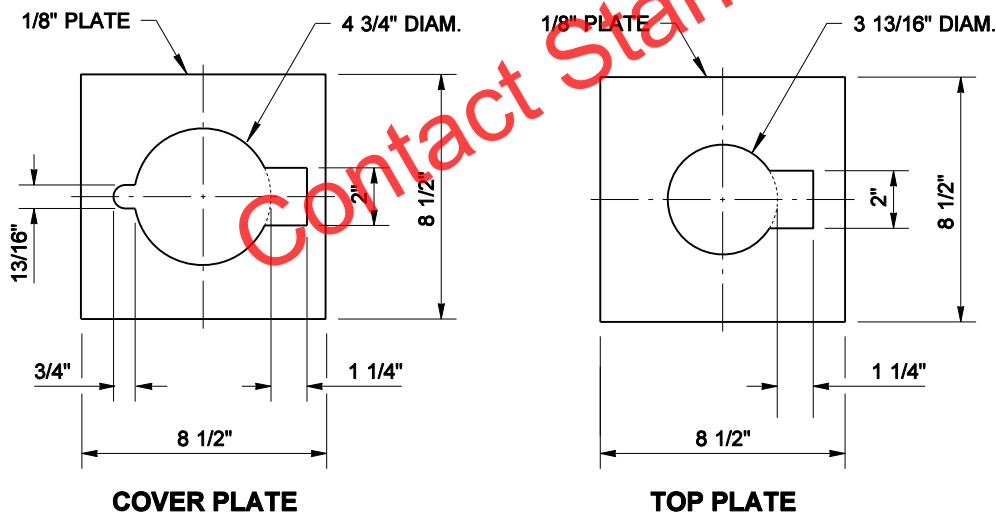
BASE ASSEMBLY



POST

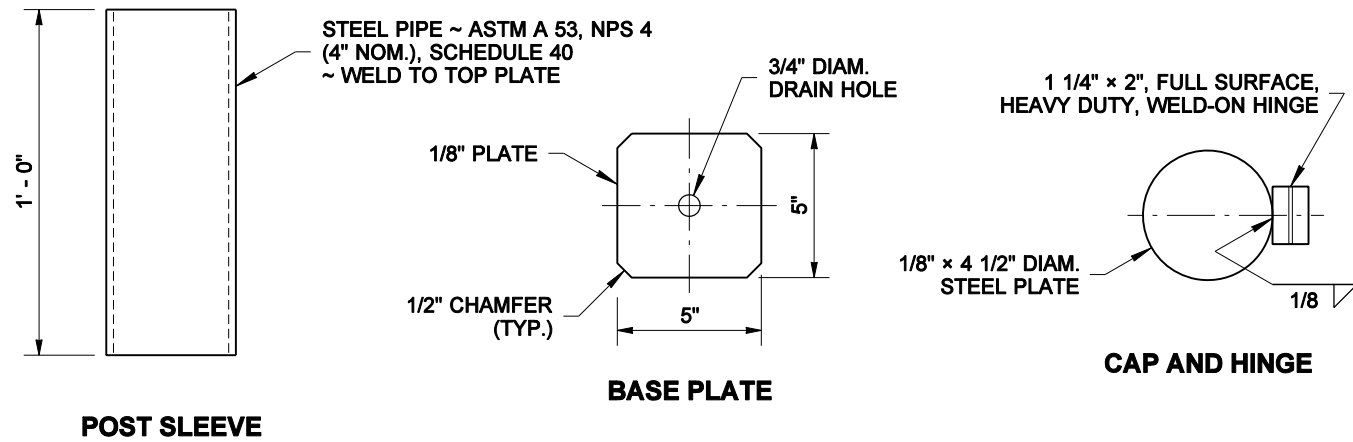
NOTE

This bollard does not have an effective breakaway design feature and cannot be installed within the Design Clear Zone.



COVER PLATE

TOP PLATE



POST SLEEVE

BASE PLATE

CAP AND HINGE



EXPIRES JUNE 19, 2010

NOTE: THIS PLAN IS NOT A LEGAL ENGINEERING DOCUMENT UNLESS IT IS SIGNED AND SEALED BY THE ENGINEER WHO PREPARED IT. FOR OFFICIAL RECORDATION, THIS PLAN MUST BE FILED AT THE WASHINGTON STATE DEPARTMENT OF TRANSPORTATION. A COPY MAY BE OBTAINED UPON REQUEST.

BOLLARD TYPE 1

STANDARD PLAN H-60.10-01

SHEET 1 OF 1 SHEET

APPROVED FOR PUBLICATION

Pasco Bakotich III 07-03-08

STATE DESIGN ENGINEER

DATE

