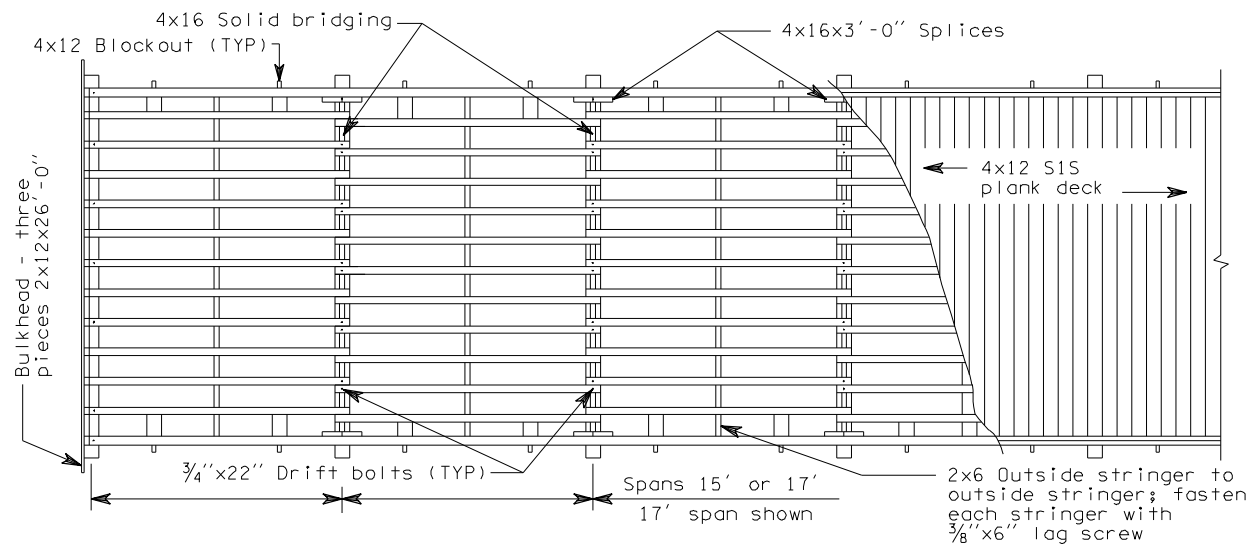
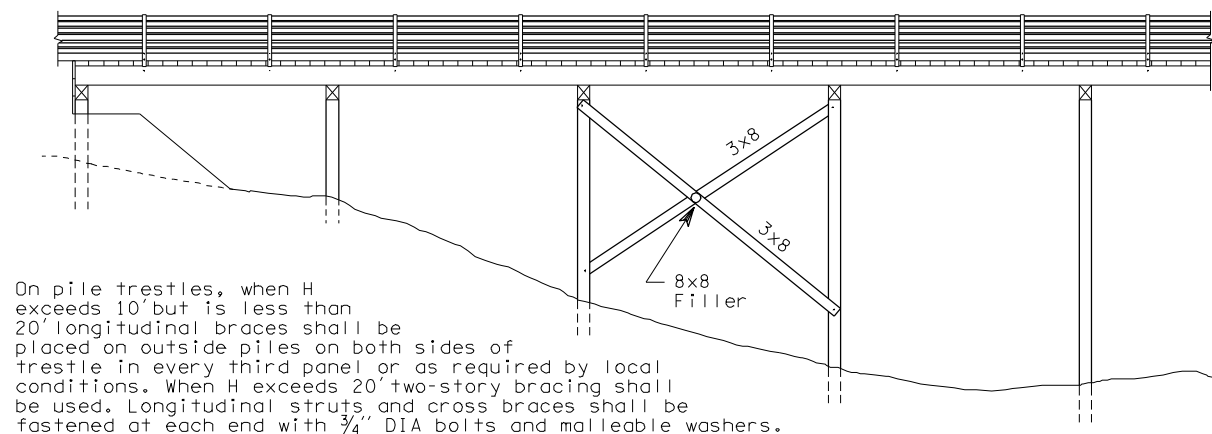


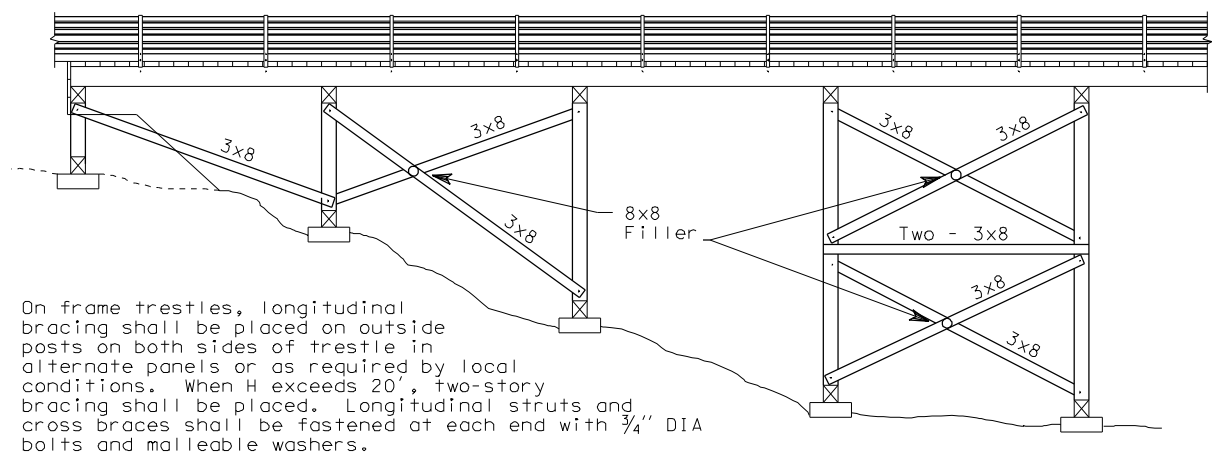
DECK FRAMING PLAN - SINGLE LANE



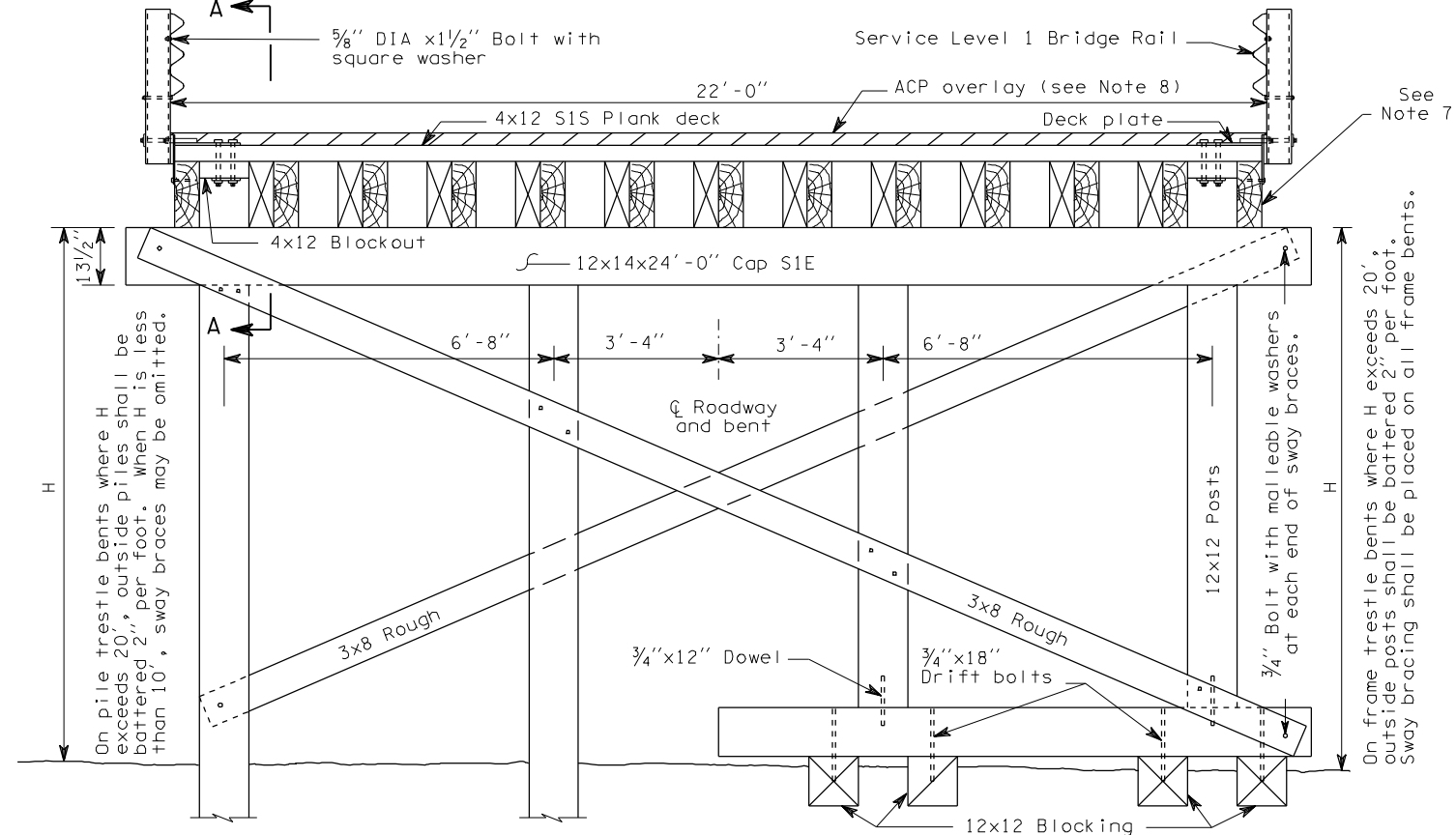
DECK FRAMING PLAN - TWO LANE



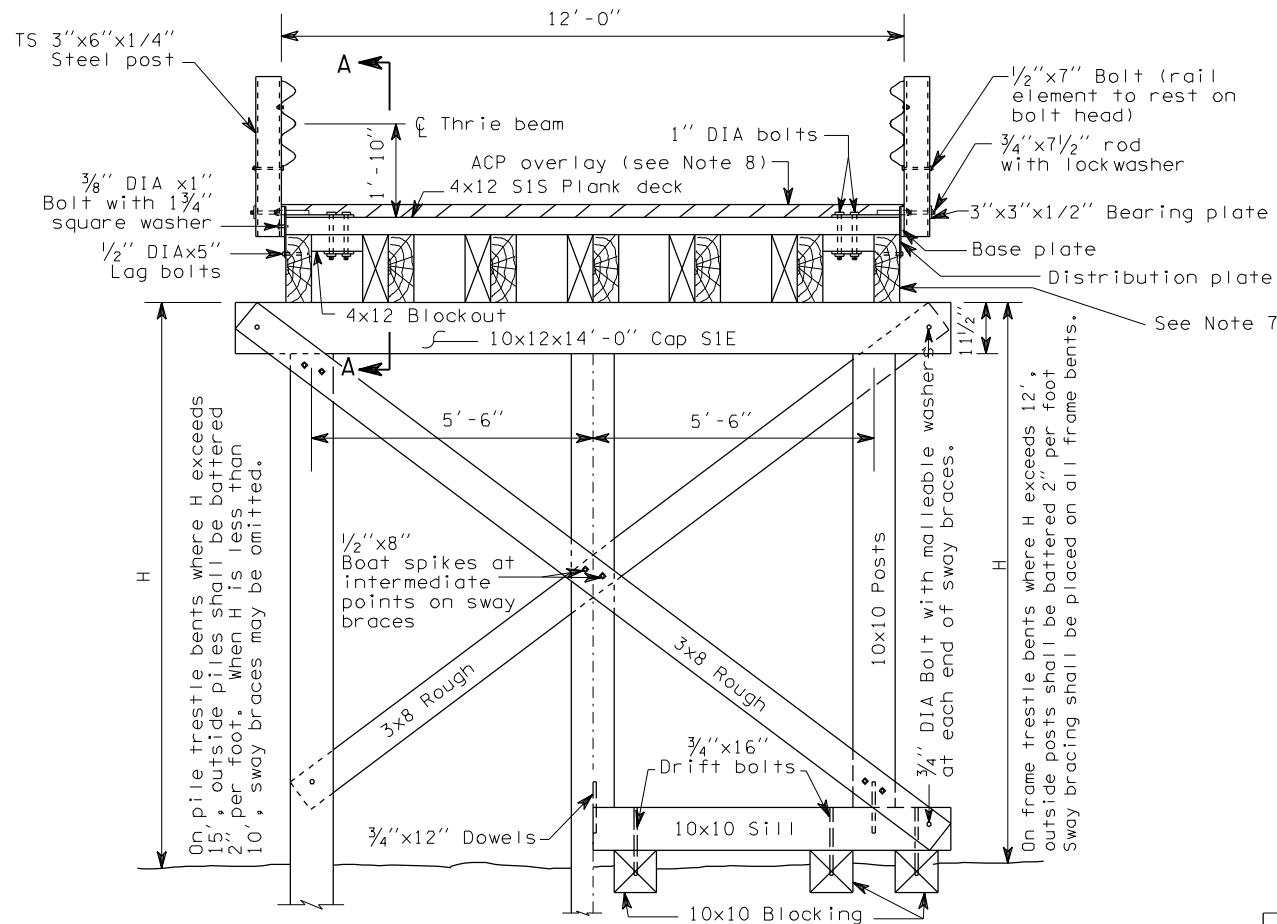
ELEVATION - PILE TRESTLE



ELEVATION - FRAME TRESTLE



HALF SECTION-PILE BENT
TYPICAL SECTION-TWO LANE BRIDGE



HALF SECTION-PILE BENT
TYPICAL SECTION-SINGLE LANE BRIDGE



EXPIRES JANUARY 17, 1999

PILE OR FRAME
DETOUR BRIDGE WITH
ASPHALT OVERLAY
USE ONLY FOR TEMPORARY BRIDGES
STANDARD PLAN E-2
SHEET 1 OF 2 SHEETS

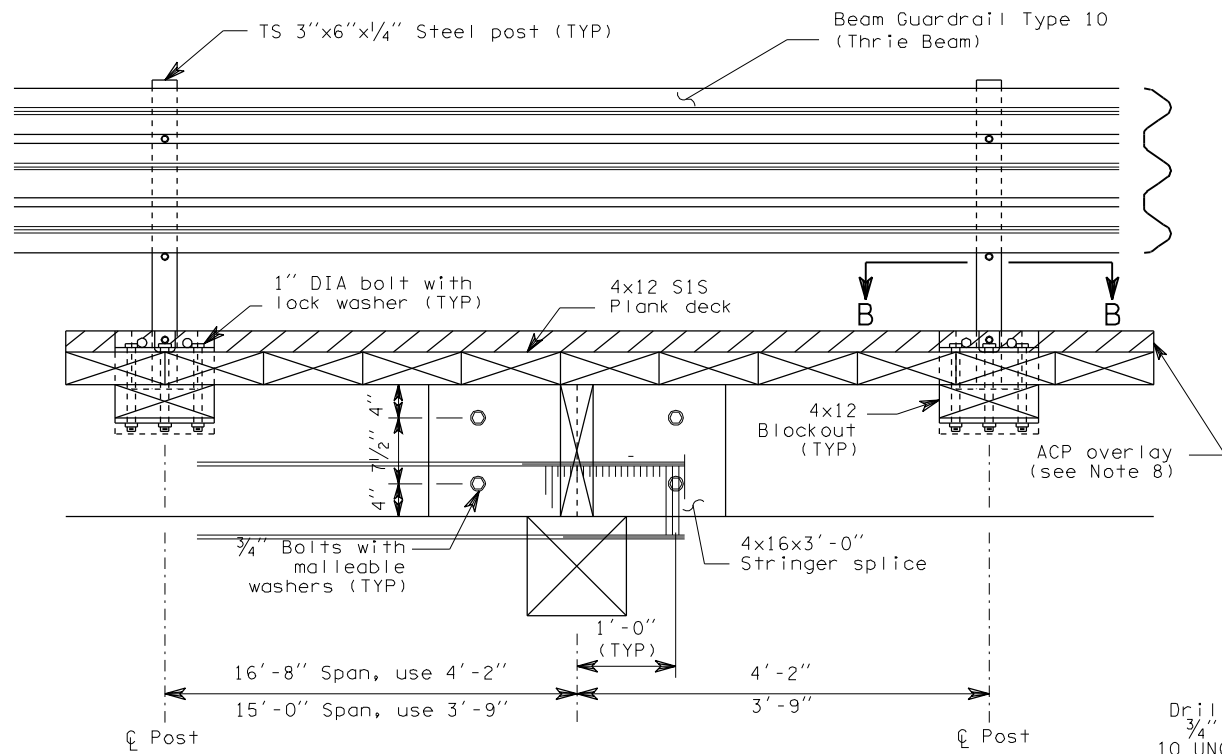
APPROVED FOR PUBLICATION

Brian Ziegler 05-29-98

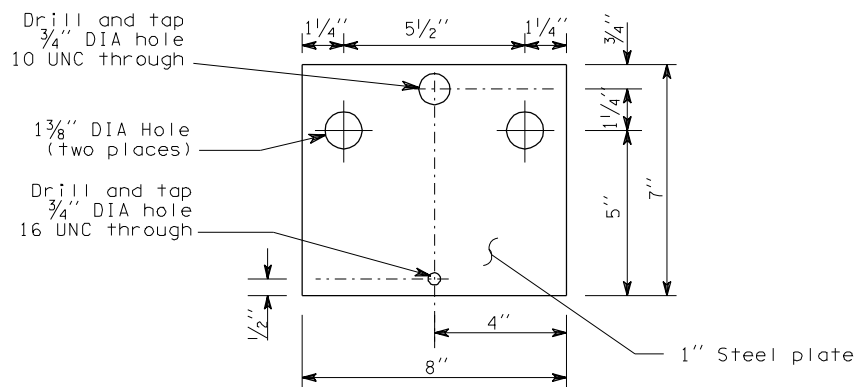
STATE DESIGN ENGINEER DATE

WASHINGTON STATE DEPARTMENT OF TRANSPORTATION
OLYMPIA, WASHINGTON

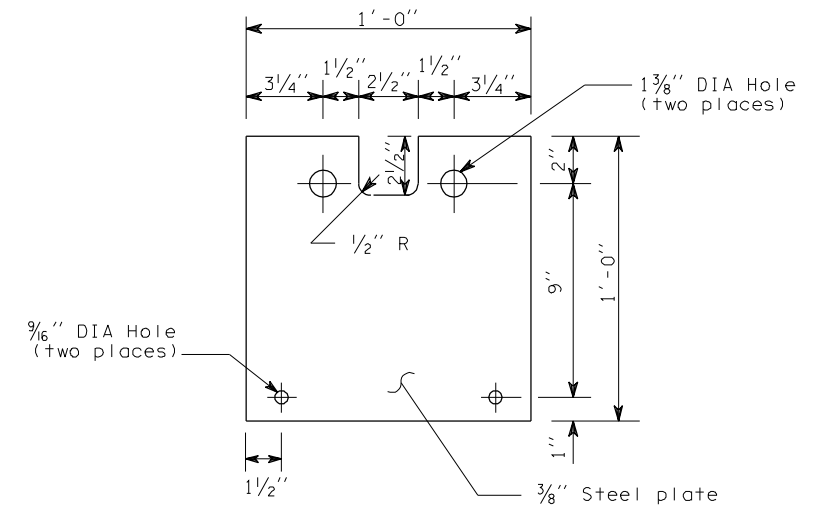
NOTE: THIS PLAN IS NOT A LEGAL ENGINEERING DOCUMENT BUT AN ELECTRONIC DUPLICATE. THE ORIGINAL, SIGNED BY THE ENGINEER AND APPROVED FOR PUBLICATION, IS KEPT ON FILE AT THE WASHINGTON STATE DEPARTMENT OF TRANSPORTATION. A COPY MAY BE OBTAINED UPON REQUEST.



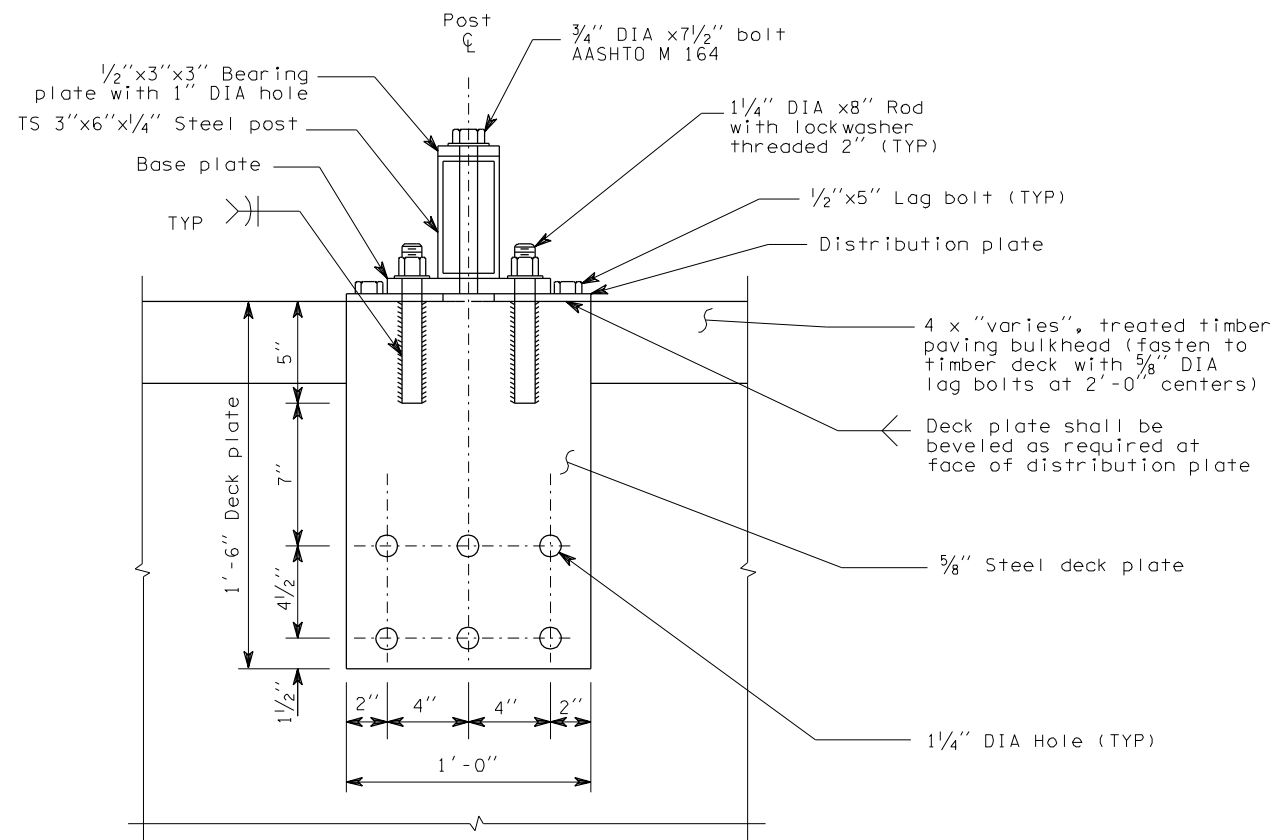
SECTION A-A



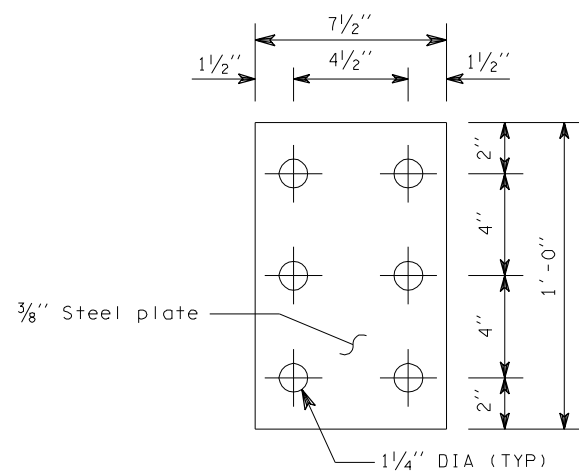
BASE PLATE DETAIL



DISTRIBUTION PLATE DETAIL



SECTION B-B



BACKING PLATE DETAIL

- NOTES
1. Dimensions and notations for superstructure are typical for both single lane and two lane bridges.
 2. All timber and lumber shall be #2 or better and untreated Douglas fir-larch.
 3. All piling shall be untreated Douglas fir and shall be driven to develop a minimum load bearing capacity of 15 tons.
 4. Blocking for frame bents shall be proportioned to carry a minimum load of 15 tons per post.
 5. All hardware shall be black, ungalvanized.
 6. Each deck plank shall be nailed to each stringer with two 7" spikes, number 1 or larger.
 7. On 17' spans, stringers shall be 6x16 S1E. On 15' spans, stringers shall be 5x16 S1E. Two-lane bridges shall use thirteen lines of stringers, one-lane bridges shall use seven lines of stringers.
 8. Overlay thickness must be sufficient to cover bolts.



EXPIRES JANUARY 17, 1999

**PILE OR FRAME
DETOUR BRIDGE WITH
ASPHALT OVERLAY**
USE ONLY FOR TEMPORARY BRIDGES
STANDARD PLAN E-2
SHEET 2 OF 2 SHEETS

APPROVED FOR PUBLICATION
Brian Ziegler 05-29-98
STATE DESIGN ENGINEER DATE
WASHINGTON STATE DEPARTMENT OF TRANSPORTATION
OLYMPIA, WASHINGTON

NOTE: THIS PLAN IS NOT A LEGAL ENGINEERING DOCUMENT BUT AN ELECTRONIC DUPLICATE. THE ORIGINAL, SIGNED BY THE ENGINEER AND APPROVED FOR PUBLICATION, IS KEPT ON FILE AT THE WASHINGTON STATE DEPARTMENT OF TRANSPORTATION. A COPY MAY BE OBTAINED UPON REQUEST.