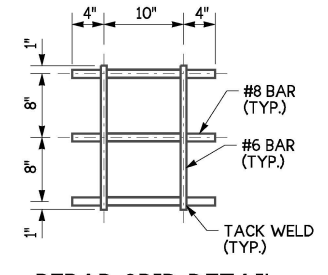
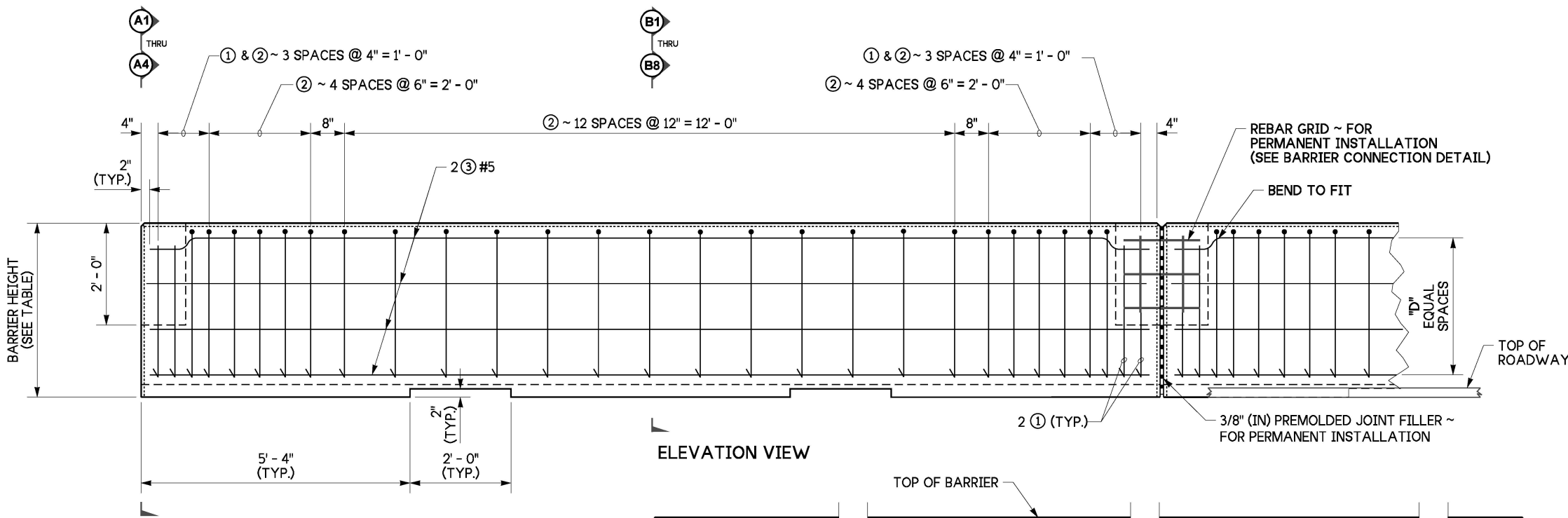


PLAN VIEW



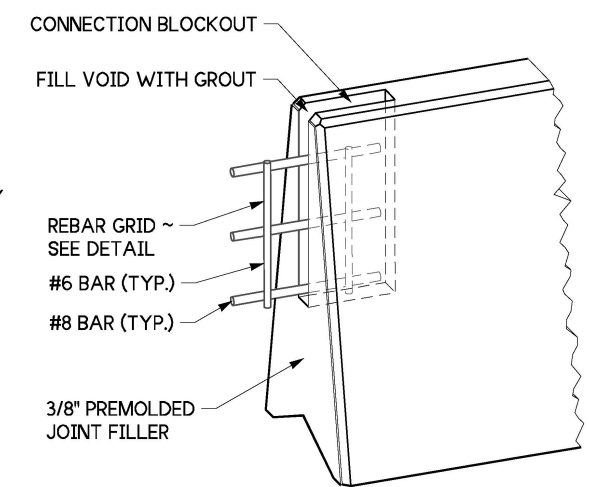
REBAR GRID DETAIL



ELEVATION VIEW

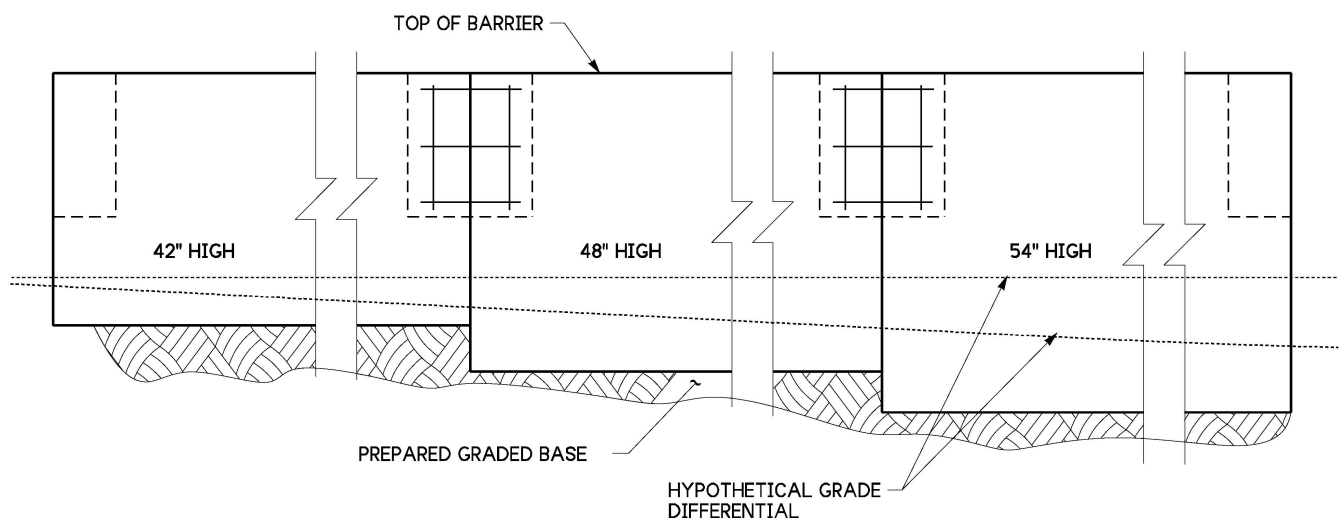
NOTES

1. INSTALLATION requirements: Embed barrier 3" (in) minimum in asphalt or concrete; Embed barrier 10" (in) minimum in compacted base material (e.g., CSBC, select borrow, gravel borrow, native soil, etc.). Install 3/8" (in) Premolded Joint Filler between segments; fill the Connection Blockout with grout, centering the Rebar Grid in the blockout before adding grout.
2. Use Cast-In-Place (CIP) single slope barrier (Standard Plan C-80.10) for Installation on a horizontal curve with a radius less than 2,000' (ft).
3. See Sheet 2 for barrier with a 2' - 10" reveal installed in asphalt or concrete. See Sheet 3 for barrier with a 3' - 6" reveal installed in asphalt or concrete. See Sheet 4 for barrier with a 2' - 10" reveal installed in compacted base material (e.g., CSBC, select borrow, gravel borrow, native soil, etc.). See Sheet 4 for barrier with a 3' - 6" reveal installed in compacted base material (e.g., CSBC, select borrow, gravel borrow, native soil, etc.).
4. The barrier embedment depth shall be equal to or greater than the grade separation.



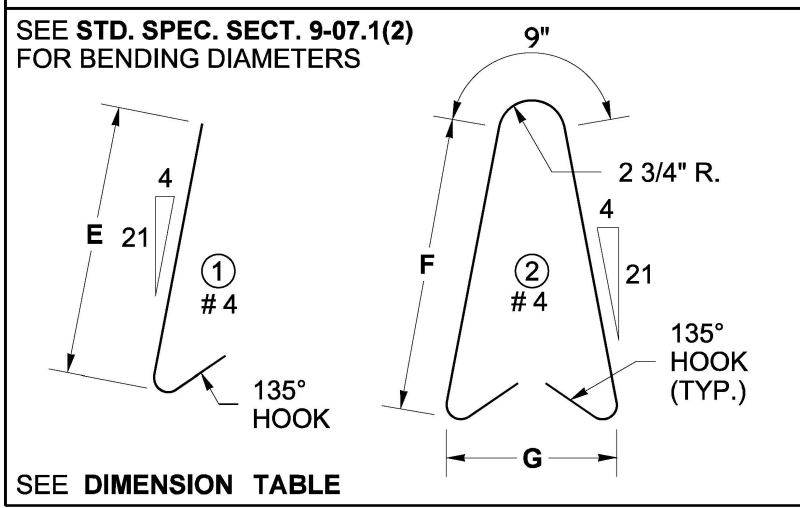
BARRIER CONNECTION DETAIL

NOTE:
STEEL WELDED WIRE REINFORCEMENT DEFORMED FOR CONCRETE MAY BE SUBSTITUTED FOR REINFORCING STEEL IN ACCORDANCE WITH STANDARD SPECIFICATION SECTION 6-10.3.

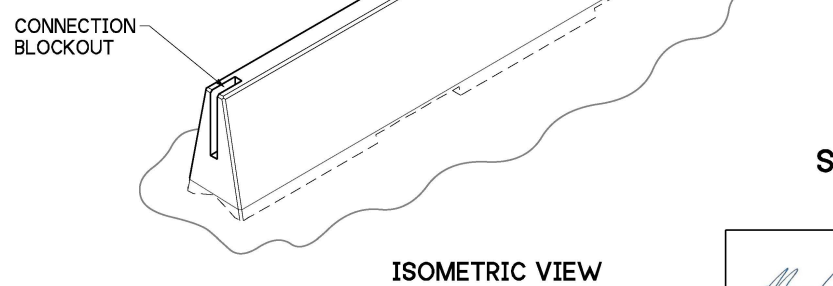


BARRIER TRANSITION DETAIL

REINFORCING STEEL BENDING DIAGRAM



DIMENSION TABLE							
BARRIER HEIGHT	A	B	D	E	F	G	HORIZONTAL BARS (QTY.)
3' - 6"	8"	2' - 0"	3	2' - 8"	2' - 10"	1' - 7"	8
4' - 0"	9 1/8"	2' - 2 1/4"	4	3' - 2"	3' - 4"	1' - 9"	10
4' - 6"	10 1/4"	2' - 4 1/2"	5	3' - 8"	3' - 10"	1' - 11"	12



ISOMETRIC VIEW



Oct 13, 2023

**SINGLE-SLOPE
CONCRETE BARRIER
(PRECAST)
STANDARD PLAN C-70.10-04**

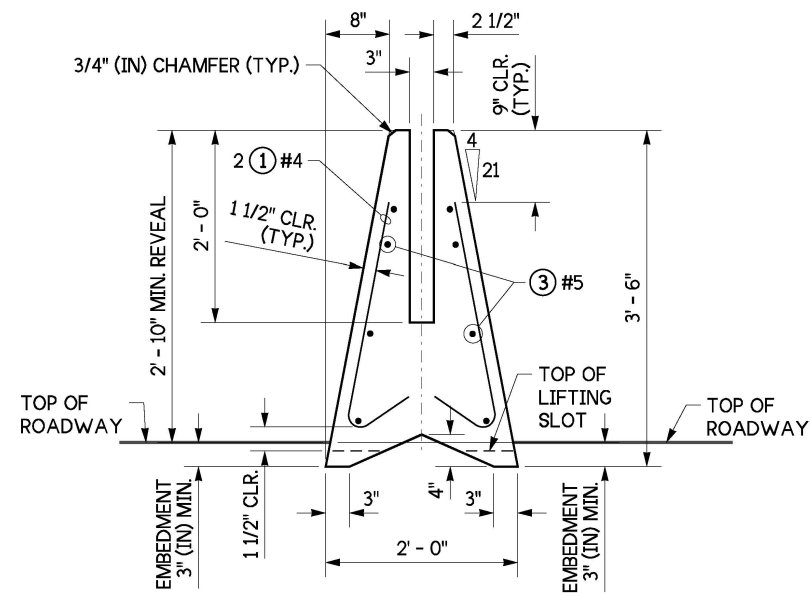
SHEET 1 OF 4 SHEETS

APPROVED FOR PUBLICATION

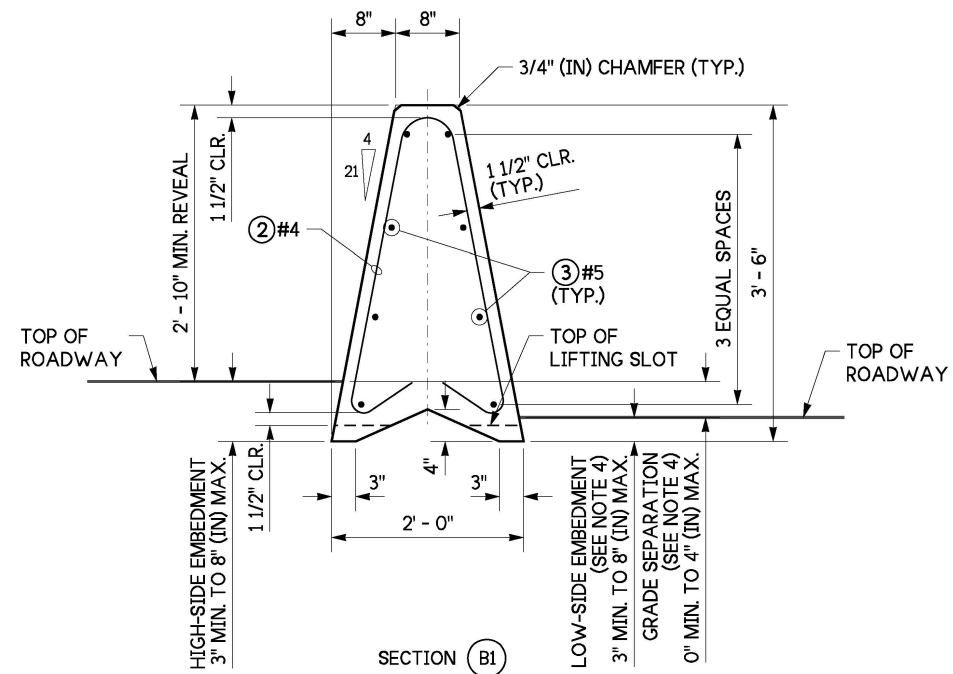
Mark A. Poirier Oct 16, 2023

STATE DESIGN ENGINEER

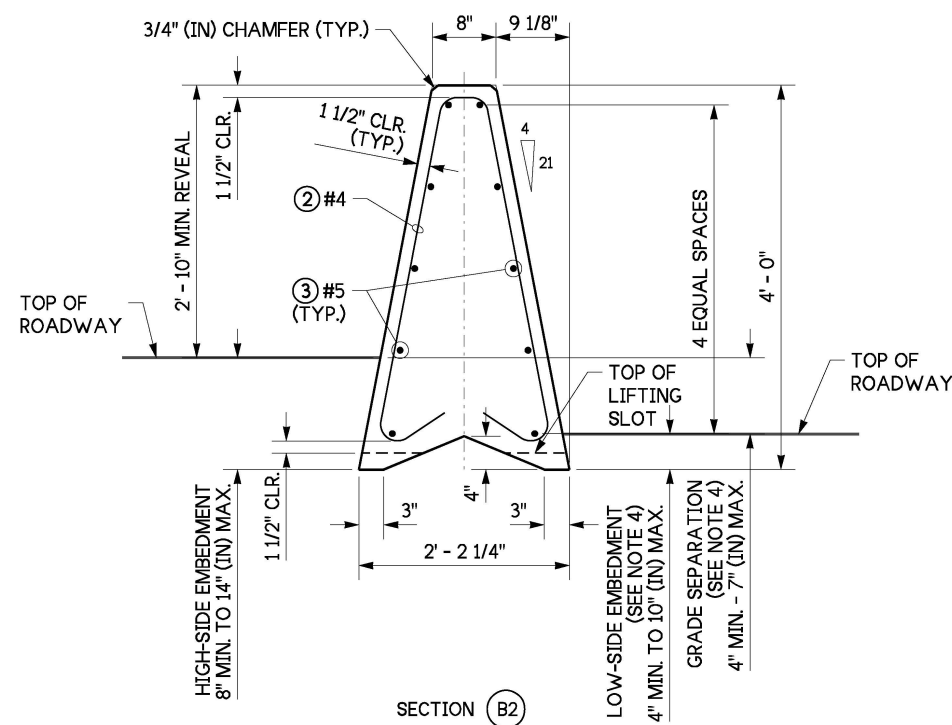
Washington State Department of Transportation



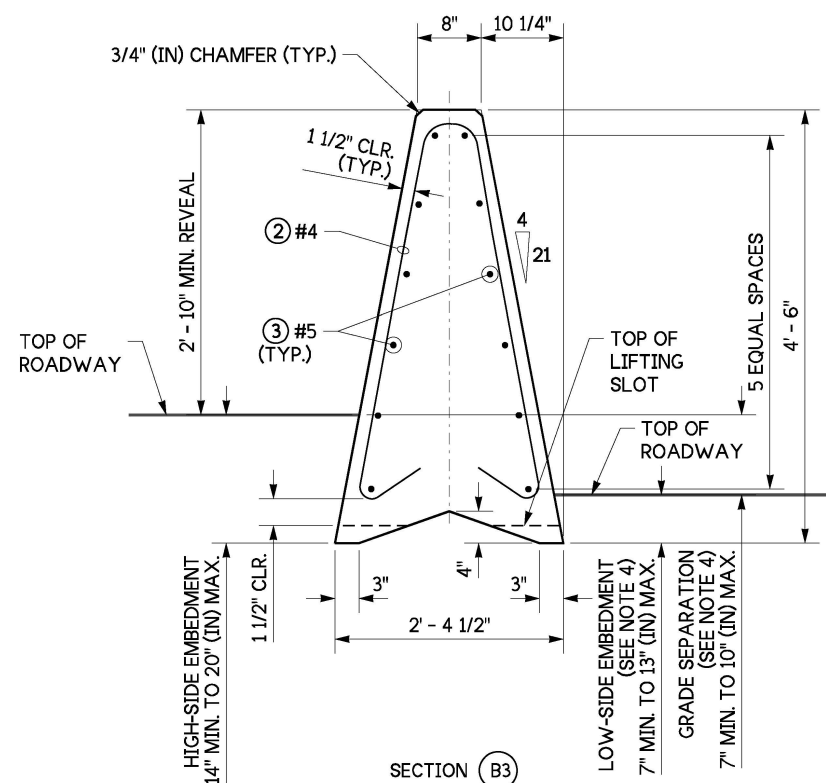
SECTION (A1)
 (3' - 6" BARRIER ~ SHOWN LEVEL)



SECTION (B1)
 3' - 6" BARRIER FOR USE WITH A 0" TO 4" (IN) MAX. GRADE SEPARATION



SECTION (B2)
 4' - 0" BARRIER FOR USE WITH A GREATER THAN 4" TO 7" (IN) MAX. GRADE SEPARATION



SECTION (B3)
 4' - 6" BARRIER FOR USE WITH A GREATER THAN 7" TO 10" (IN) MAX. GRADE SEPARATION

**SINGLE SLOPE BARRIER 2' - 10" MIN. REVEAL
 (EMBEDDED 3" MINIMUM IN ASPHALT OR CONCRETE)**



Oct 13, 2023

**SINGLE-SLOPE
 CONCRETE BARRIER
 (PRECAST)
 STANDARD PLAN C-70.10-04**

SHEET 2 OF 4 SHEETS

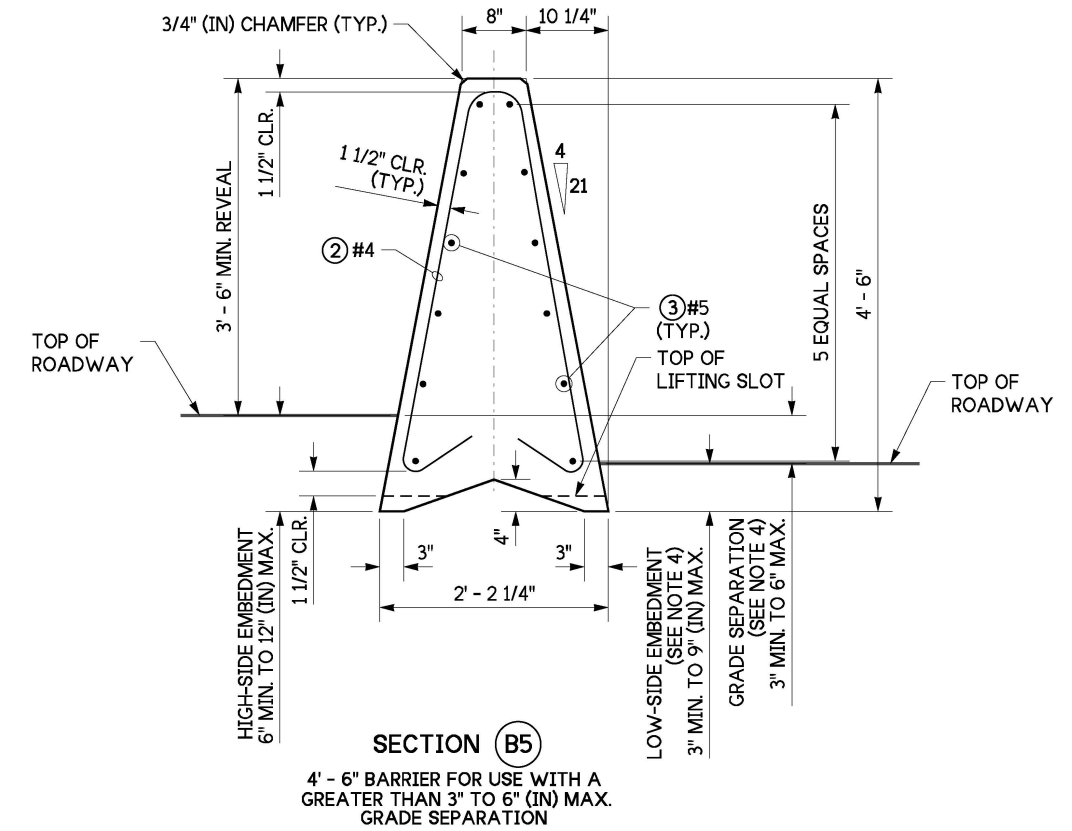
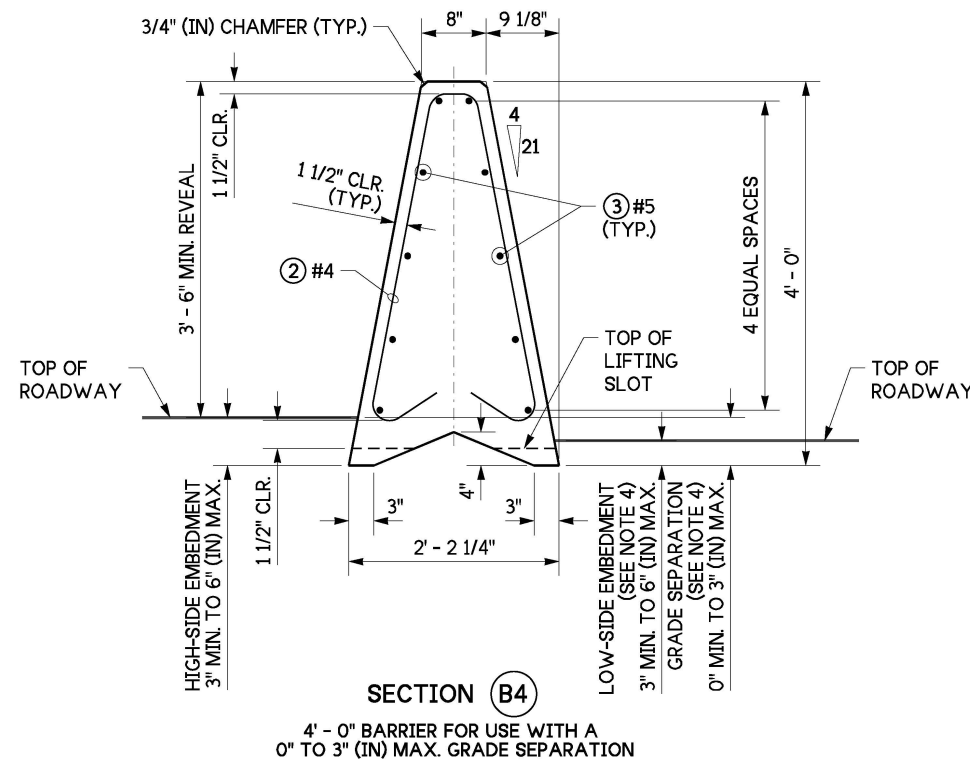
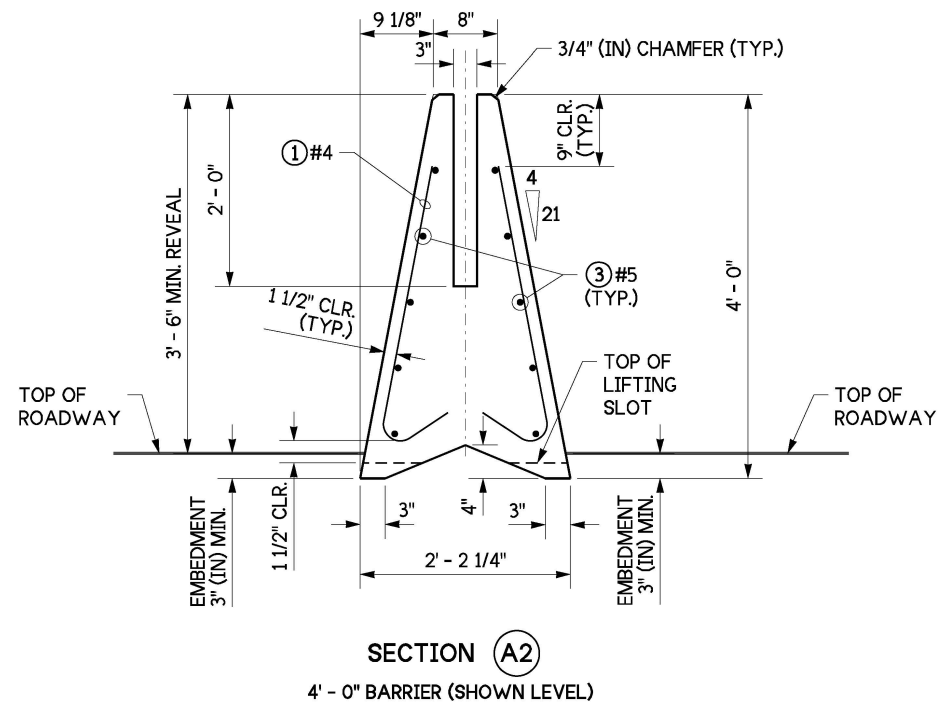
APPROVED FOR PUBLICATION

Mark A. Hoines

Oct 16, 2023

STATE DESIGN ENGINEER





HIGH PERFORMANCE SINGLE SLOPE BARRIER ~ 3' - 6" REVEAL
(EMBEDDED 3" (IN) MINIMUM IN ASPHALT OR CONCRETE)



Oct 13, 2023
SINGLE-SLOPE
CONCRETE BARRIER
(PRECAST)
STANDARD PLAN C-70.10-04

SHEET 3 OF 4 SHEETS

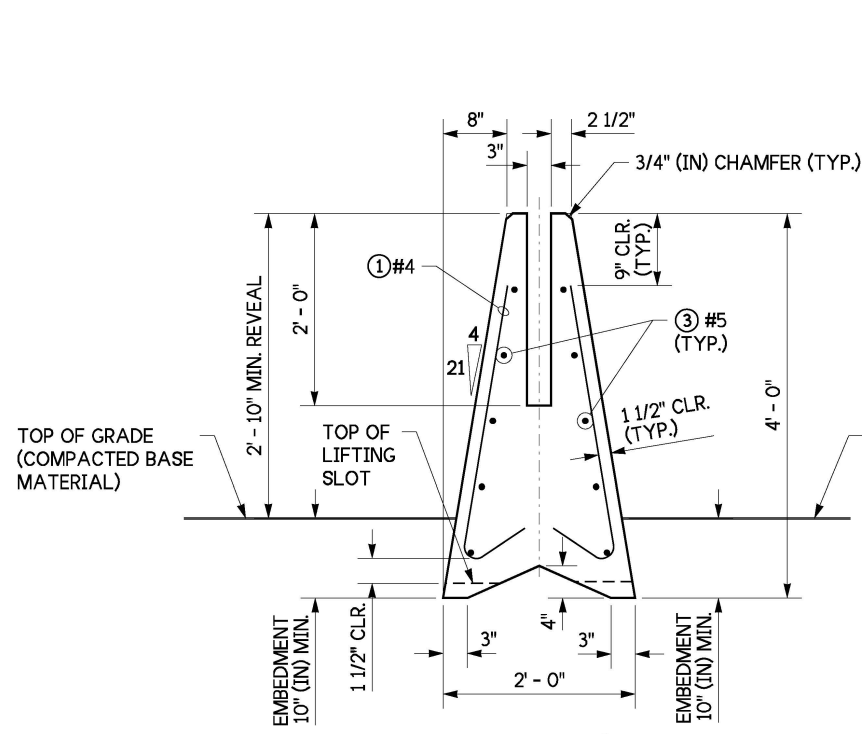
APPROVED FOR PUBLICATION

Mark A. Davis

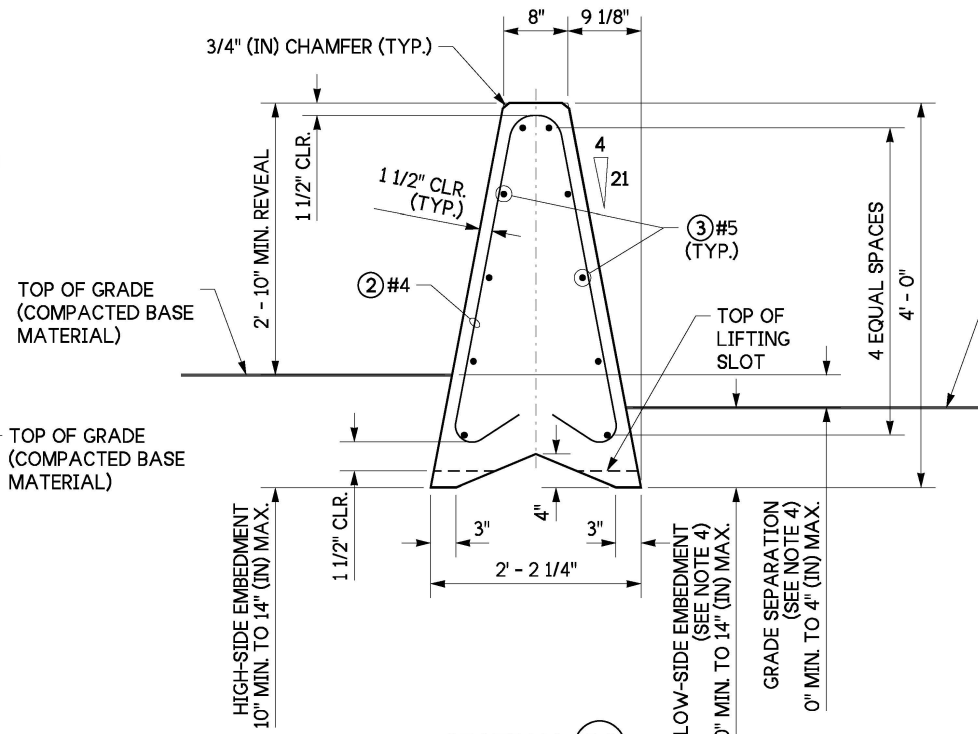
Oct 16, 2023

STATE DESIGN ENGINEER

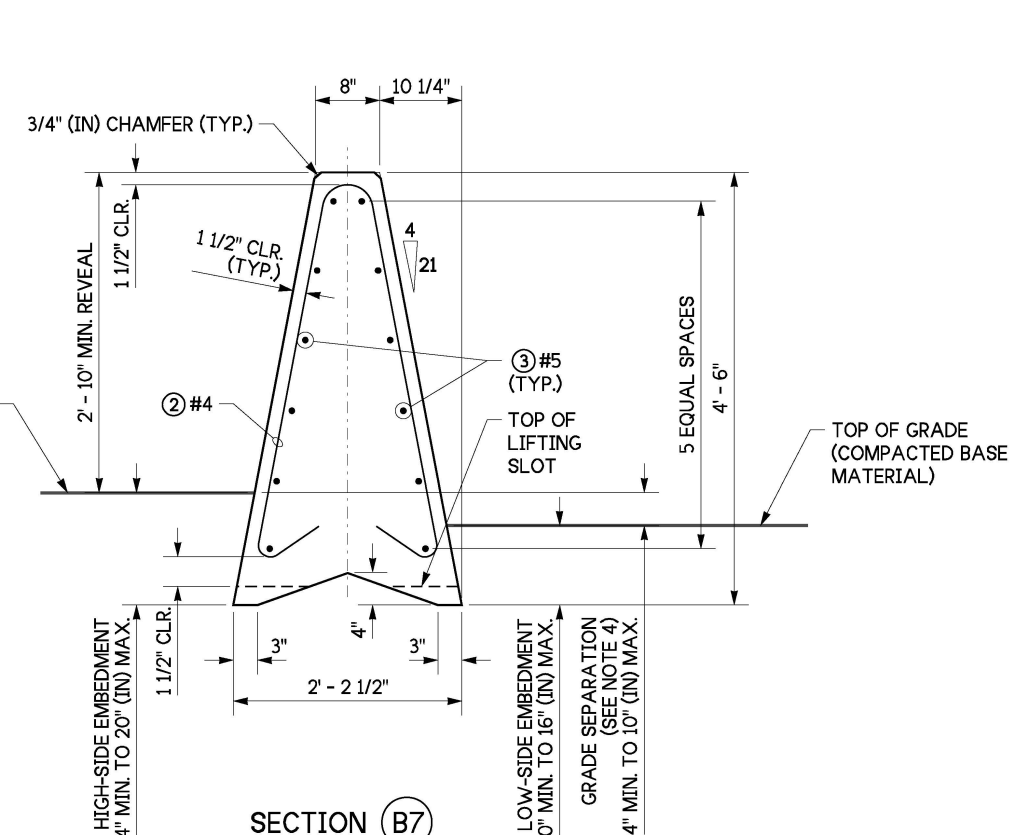
Washington State
Department of Transportation



SECTION (A3)
4' - 0" BARRIER (SHOWN LEVEL)

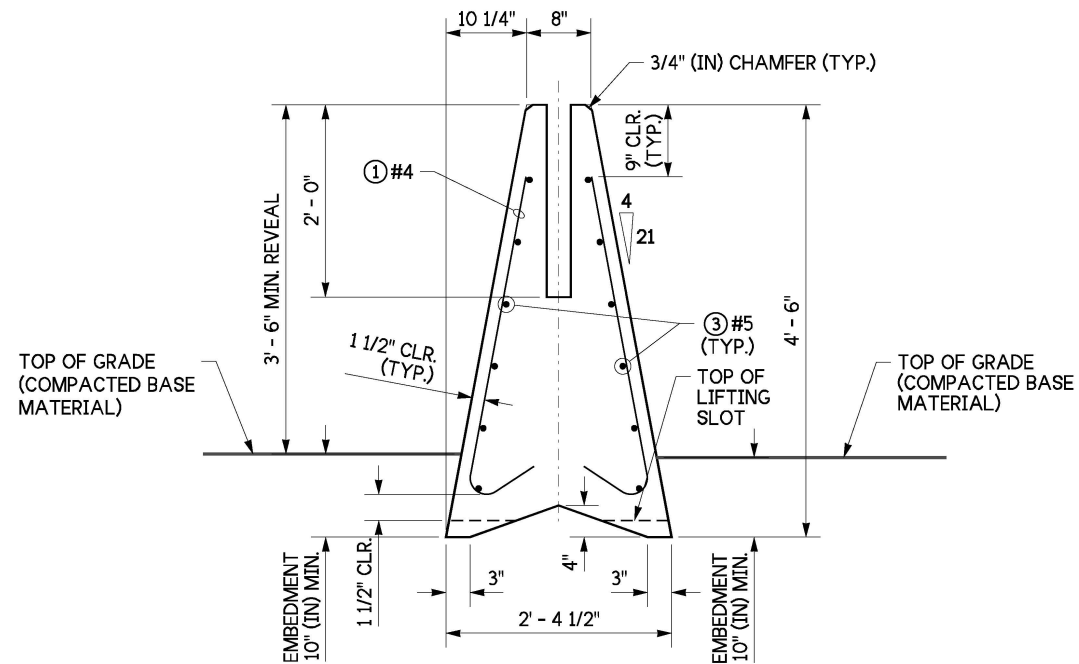


SECTION (B6)
4' - 0" BARRIER FOR USE WITH A
GREATER THAN 0" TO 4" (IN) MAX.
GRADE SEPARATION

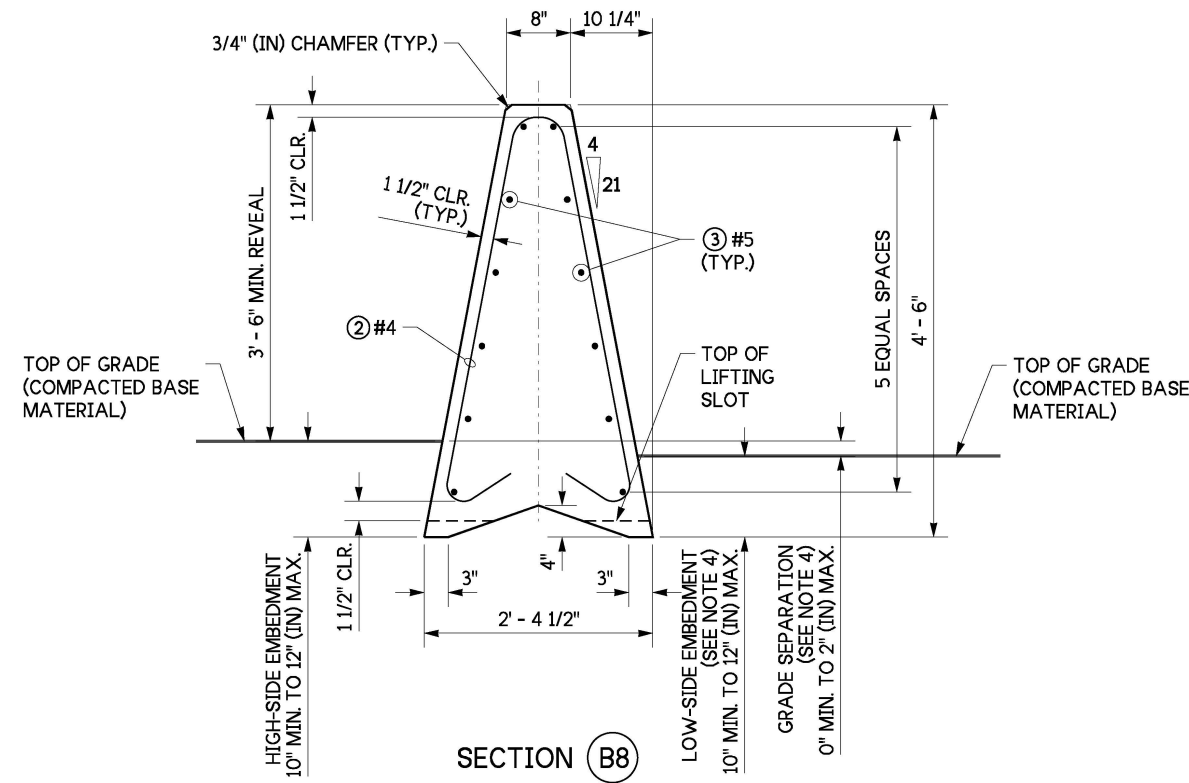


SECTION (B7)
4' - 6" BARRIER FOR USE WITH A
GREATER THAN 4" TO 10" (IN) MAX.
GRADE SEPARATION

SINGLE SLOPE BARRIER ~ 2' - 10" MINIMUM REVEAL ~ EMBEDDED 10" (IN) MINIMUM IN COMPACTED BASE MATERIAL (E.G., SELECT BORROW, GRAVEL BORROW, NATIVE SOIL, ETC.).



SECTION (A4)
4' - 6" BARRIER (SHOWN LEVEL)



SECTION (B8)
4' - 6" BARRIER FOR USE WITH A
0" TO 2" (IN) MAX. GRADE SEPARATION

HIGH PERFORMANCE SINGLE SLOPE BARRIER ~ 3' - 6" MINIMUM REVEAL EMBEDDED 10" (IN) MINIMUM IN COMPACTED BASE MATERIAL, (E.G., CSBC, SELECT BORROW, GRAVEL BORROW, NATIVE SOIL ETC.).



Oct 13, 2023
**SINGLE-SLOPE
CONCRETE BARRIER
(PRECAST)**
STANDARD PLAN C-70.10-04

SHEET 4 OF 4 SHEETS

APPROVED FOR PUBLICATION
Mark A. Davis
Oct 16, 2023
STATE DESIGN ENGINEER
Washington State
Department of Transportation