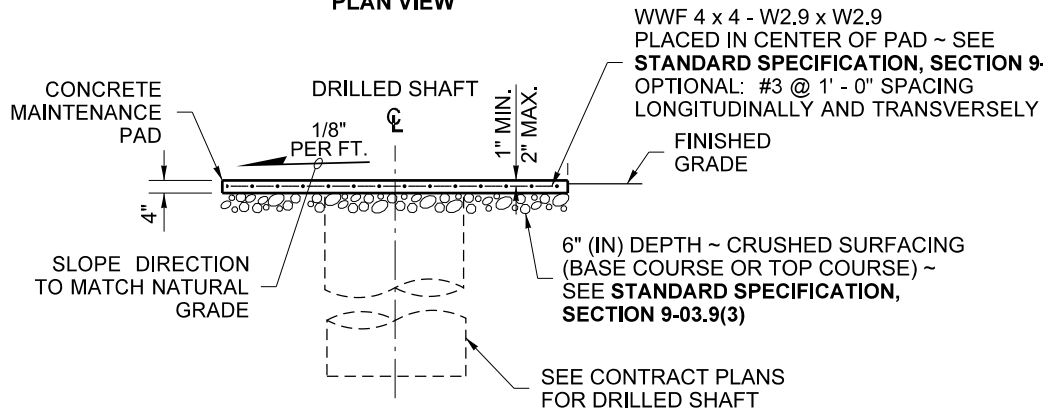


PLAN VIEW



ELEVATION VIEW

4" (IN) MAINTENANCE PAD ON SLOPES LEVEL TO 10H : 1V

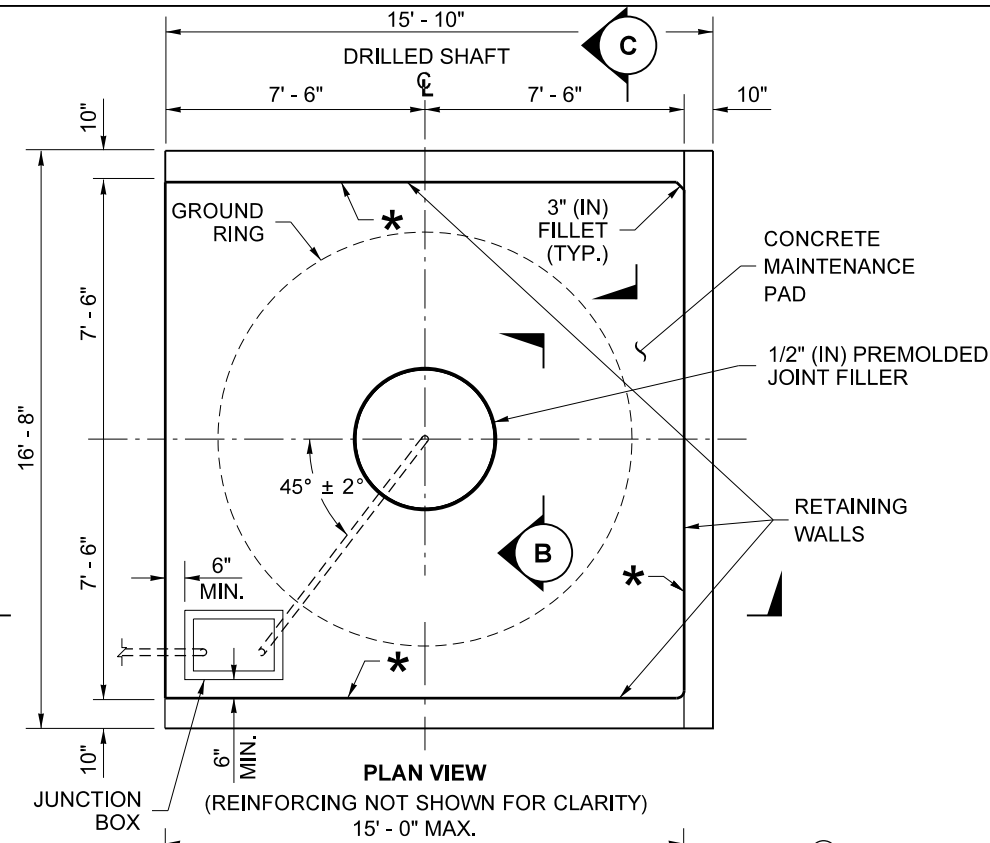
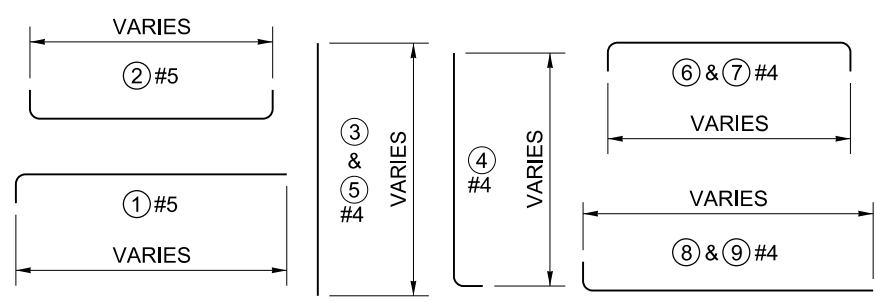
NOTE: CONCRETE FOR 4" (IN) THICK PAD SHALL BE CLASS 3000

KEY NOTE

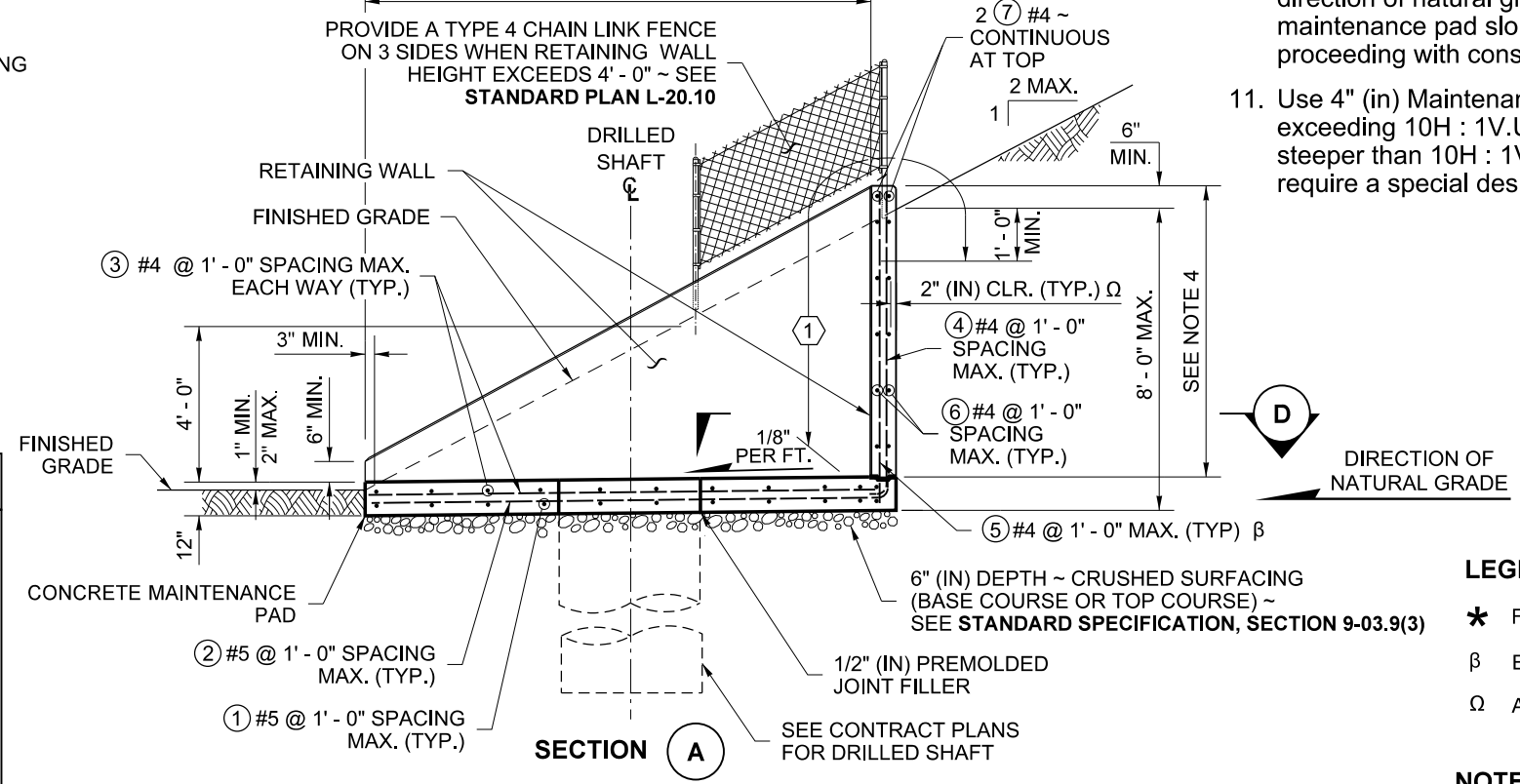
① LIMITS OF PIGMENTED SEALER. TYPICAL FOR ALL RETAINING WALLS.

REINFORCING STEEL BENDING DIAGRAM

SEE STD. SPEC. 9-07.1(2) FOR BENDING DIAM. ALL DIMENSIONS ARE OUT TO OUT



PLAN VIEW



SECTION A

12" (IN) MAINTENANCE PAD ON SLOPES STEEPER THAN 10H : 1V

NOTE: CONCRETE FOR 12" (IN) THICK PAD SHALL BE CLASS 4000 (GROUND RING NOT SHOWN FOR CLARITY)

NOTES

- All material and workmanship shall be in accordance with the **Standard Specifications**.
- The maintenance pad and retaining walls have been designed to meet the requirements of the **AASHTO LRFD Bridge Design Specifications, 7th Edition, 2014**.
- Concrete for 12" (in) thick maintenance pad shall be class 4000. Concrete for 4" (in) thick maintenance pad shall be class 3000.
- Height of wall varies to match slope of finished grade. Contractor shall field-determine wall height at each maintenance pad location and obtain approval from the Engineer prior to proceeding with construction.
- All exposed corners shall have 3/4" (in) chamfers.
- For grounding details not shown, see **Standard Plan J-60.05**.
- Where concrete cover (clear) thickness is not shown, the clear distance from the face of the concrete to the face of any reinforcing steel shall be as follows: 3" (in) for bottom of maintenance pad, 2" (in) for top of maintenance pad, and 1 1/2" (in) at all other locations.
- Falsework shall be carefully released to prevent impact or undue stress on the structure.
- See Contract Plans for number, type, and location of conduits and conductors.
- Contractor shall orient the maintenance pad to align with the direction of natural grade as shown. Engineer's approval of maintenance pad slope and orientation required prior to proceeding with construction.
- Use 4" (in) Maintenance Pad on level ground or slopes not exceeding 10H : 1V. Use 12" (in) Maintenance Pad on slopes steeper than 10H : 1V. Slopes steeper than 2H : 1V shall require a special design.

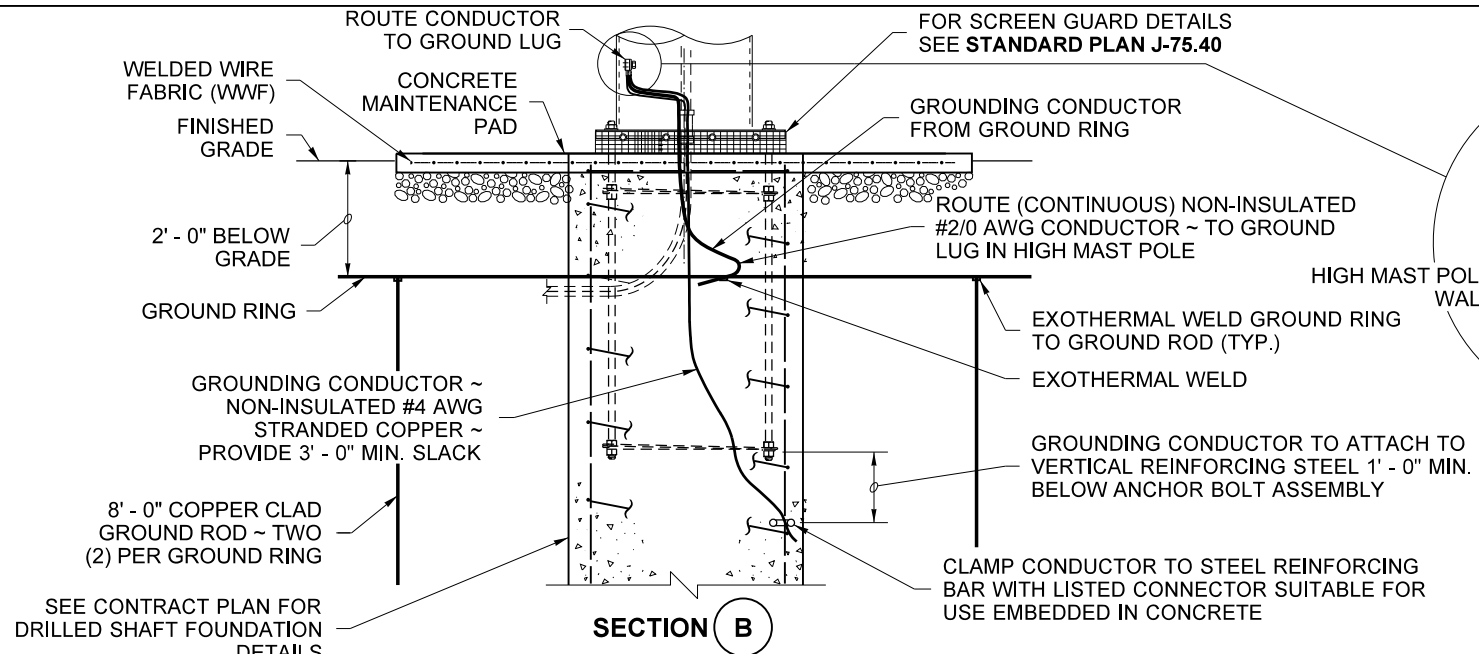
LEGEND

- * FRACTURED FIN FINISH
- β EXTEND BAR 8" (IN) INTO FOOTING
- Ω ADJACENT TO SOIL

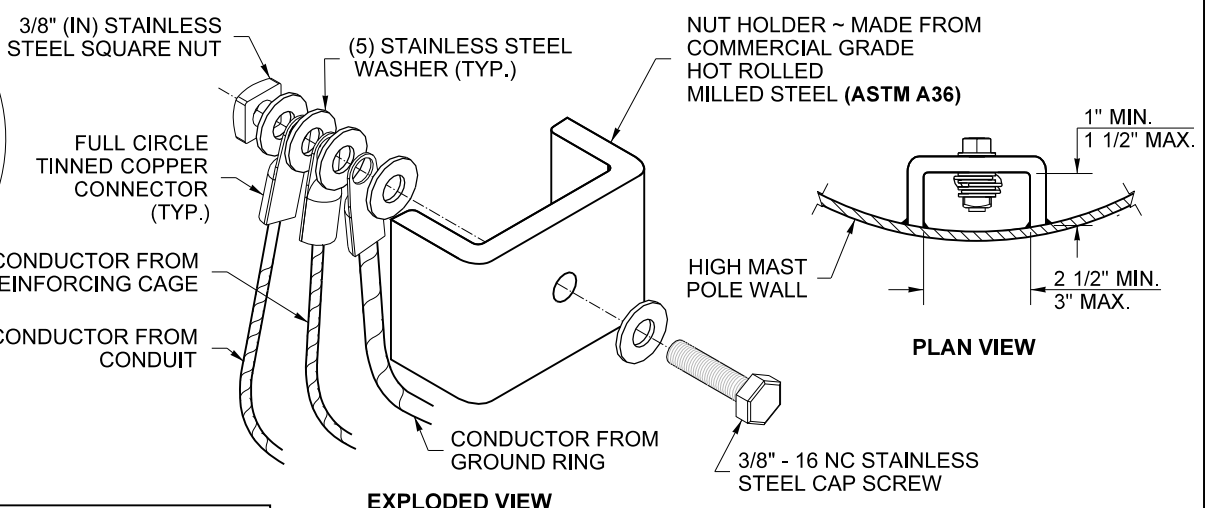
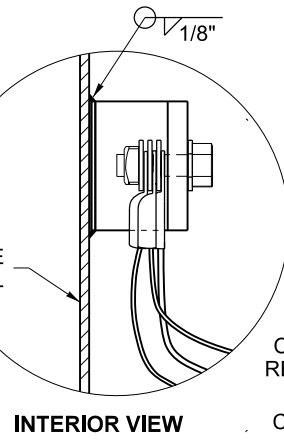
NOTE

WHEN THE MAINTENANCE PAD ABUTS ASPHALT OR CONCRETE THE CONTRACTOR SHALL MODIFY THE FINISHED GRADE 1" (IN) MINIMUM TO 2" (IN) MAXIMUM.

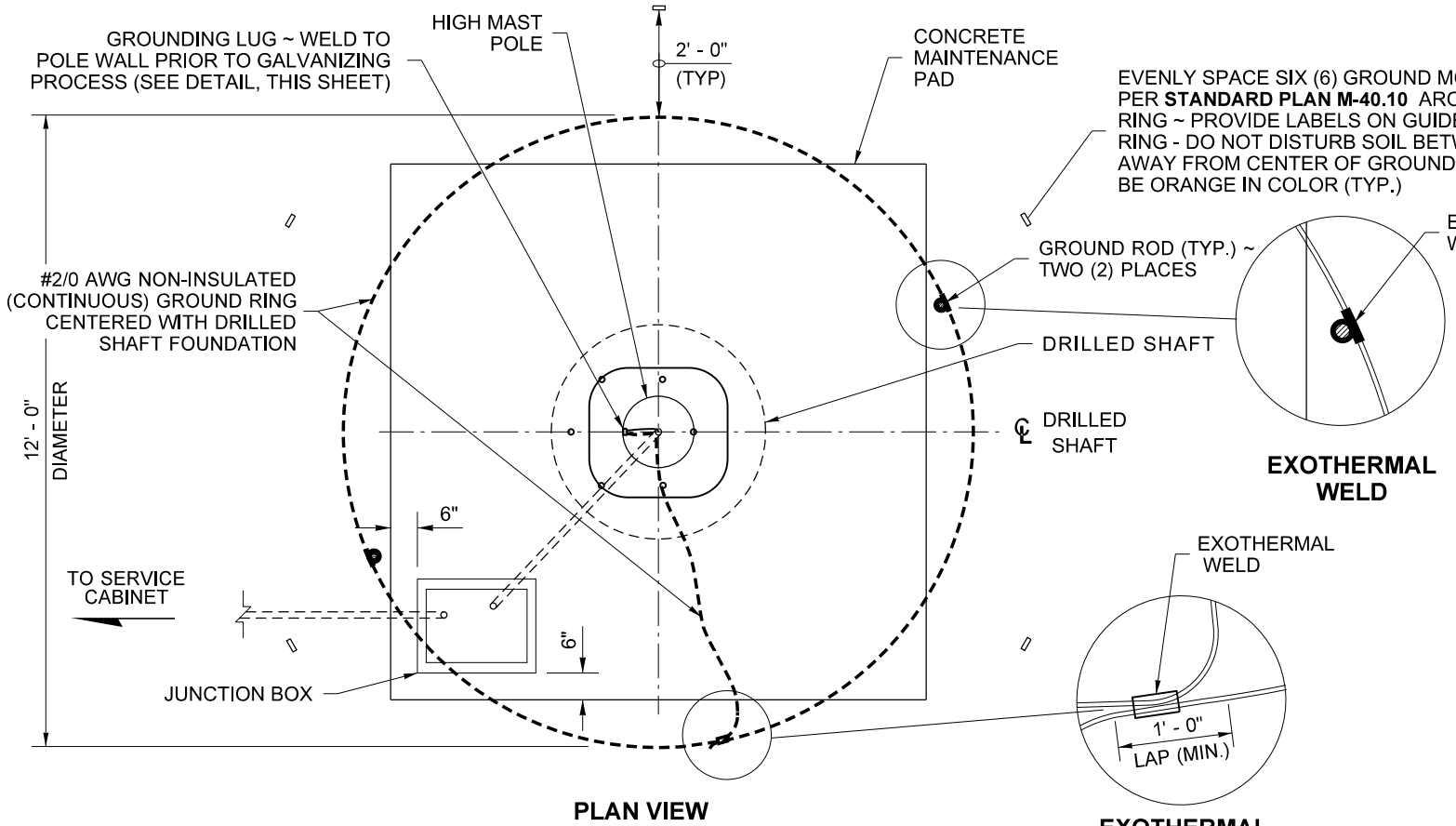
FILE NAME	S:\Design R P& S\4-Standards\2-Plan Sheet Library\02-PSL Work in Progress\Fern\IS-16a) High Mast Luminaire Maintenance Pad\IS-16a.e.dgn	REGION NO.	10	STATE	WASH	FED. AID PROJ. NO.		<p>Washington State Department of Transportation</p>	<p>HIGH MAST LUMINAIRE MAINTENANCE PAD</p>	<p>IS-16</p>
TIME	2:06:15 PM	JOB NUMBER		LOCATION NO.		P.E. STAMP BOX	DATE			
DATE	11/19/2019	CONTRACT NO.								
PLOTTED BY	liddelf									
DESIGNED BY										
ENTERED BY										
CHECKED BY										
PROJ. ENGR.										
REGIONAL ADM.		REVISION		DATE	BY					



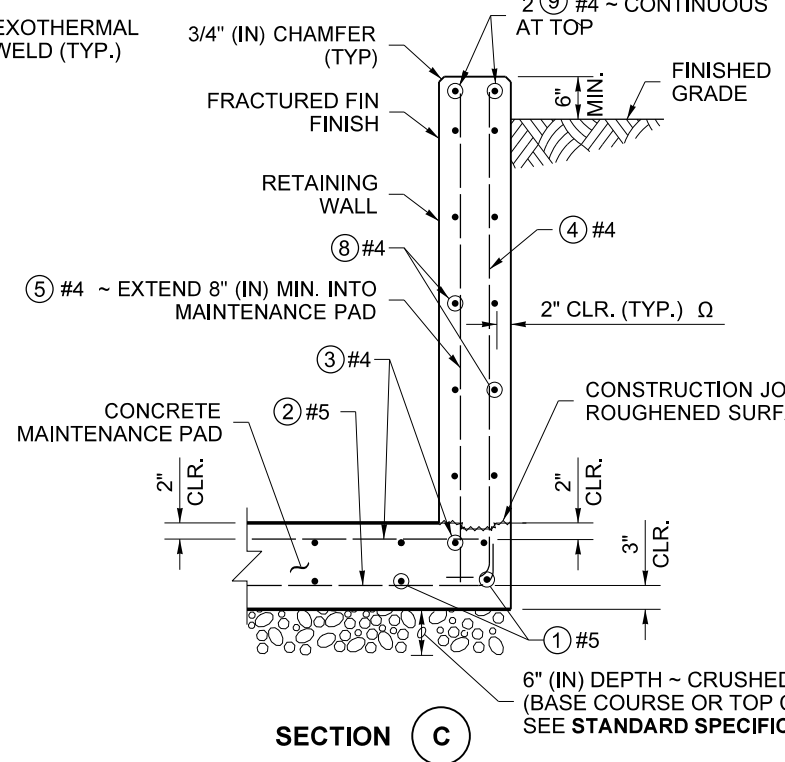
4" (IN) THICK MAINTENANCE PAD IS SHOWN IN THIS VIEW ~
 12" (IN) THICK MAINTENANCE PAD DETAIL IS SIMILAR
 (REINFORCING, ANCHOR BOLTS, AND GUIDEPOSTS NOT SHOWN IN THIS VIEW FOR CLARITY)



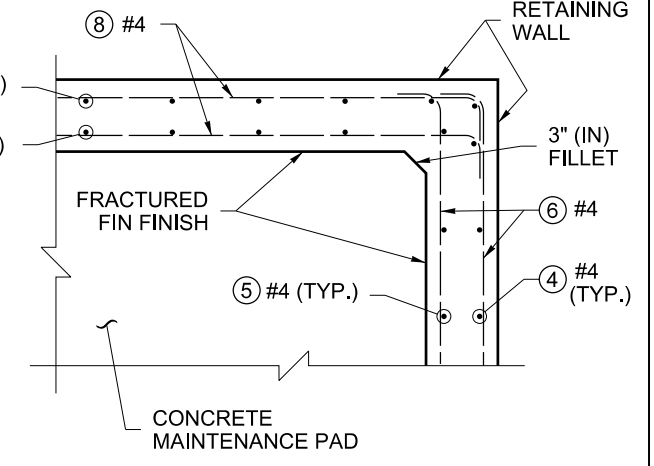
BOLTS, NUTS, AND WASHERS ~
 ASTM F593 OR A193
 TYPE 304 OR TYPE 316
 STAINLESS STEEL (S.S.)



HIGH MAST POLE MAINTENANCE PAD AND GROUNDING DETAILS
 4" (IN) THICK MAINTENANCE PAD IS SHOWN IN THIS VIEW ~
 12" (IN) THICK MAINTENANCE PAD DETAIL IS SIMILAR
 (REINFORCING NOT SHOWN FOR CLARITY)



(CHAIN LINK FENCE NOT SHOWN FOR CLARITY)



SECTION D

FILE NAME	S:\Design R P& S\4-Standards\2-Plan Sheet Library\02-PSL Work in Progress\Fern\IS-16a) High Mast Luminaire Maintenance Pad\IS-16a_e.dgn			
TIME	10:54:43 AM			
DATE	11/19/2019			
PLOTTED BY	liddelf			
DESIGNED BY				
ENTERED BY				
CHECKED BY				
PROJ. ENGR.				
REGIONAL ADM.				
REVISION	DATE	BY	REGION NO.	STATE
			10	WASH
			JOB NUMBER	FED. AID PROJ. NO.
			CONTRACT NO.	LOCATION NO.
			DATE	P.E. STAMP BOX



HIGH MAST LUMINAIRE MAINTENANCE PAD

IS-16
 SHEET 2 OF 2 SHEETS